

602EN537-1B  
PAGE 1 OF 1

M

DRAWING  
NUMBER

1011

ISSUE

PR-13038

05JUL07

PSR

CHECK

REVISIONS

A	PR	13038
31	WJM	MAY 84
B	CO	55607
13	M A M	AUG 84
C	CO59821	
1	TSK	JULY 86
D	CO61334	
11	J A S	MAY 87
E	CO61726	
26	SLB	JUN 90
E	CO60802	
26	SLB	JUN 90
F	CO93910	
16	JAF	DEC 98
G	CO94436	
19	DLT	MAR 99
H	0015091	
KRB	AUG 05	
J	0031872	
JA	05JUL07	

RASTER

FO-52851-B

DRAWN

WJM

30 MAY 84

CHECK

KAG

REPLACES

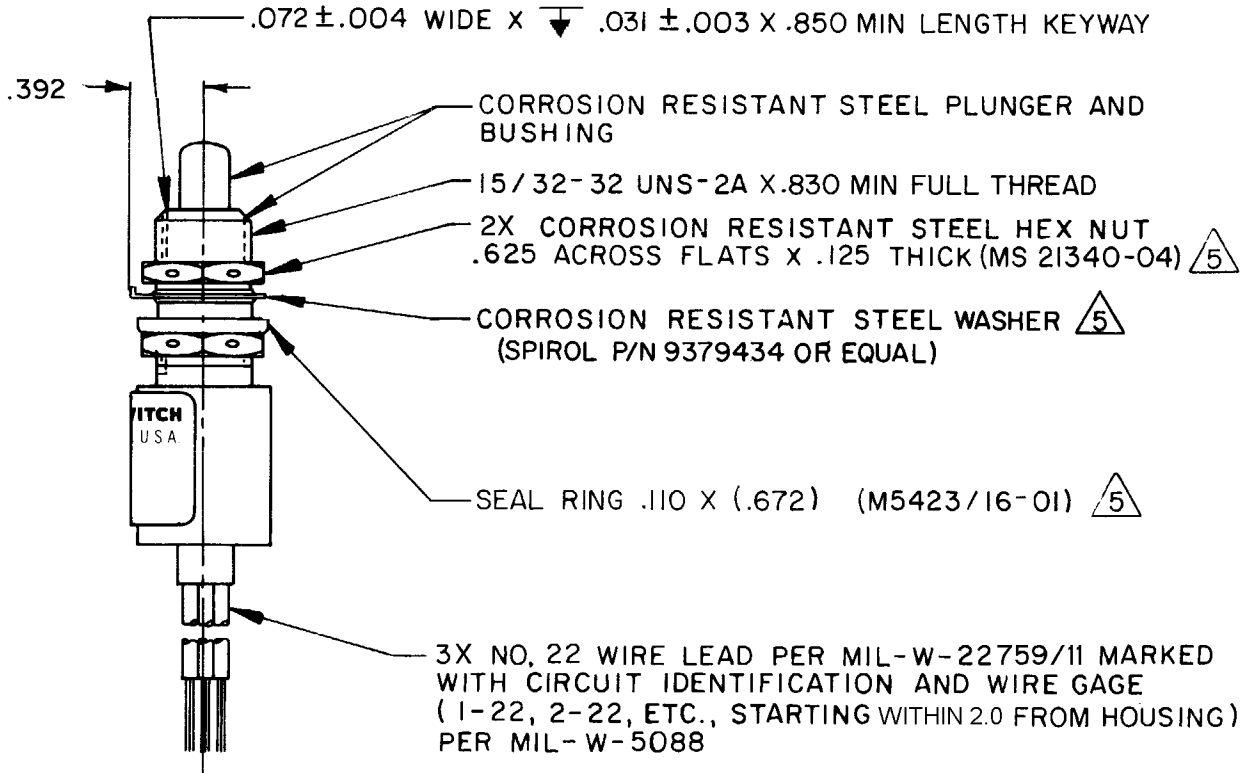
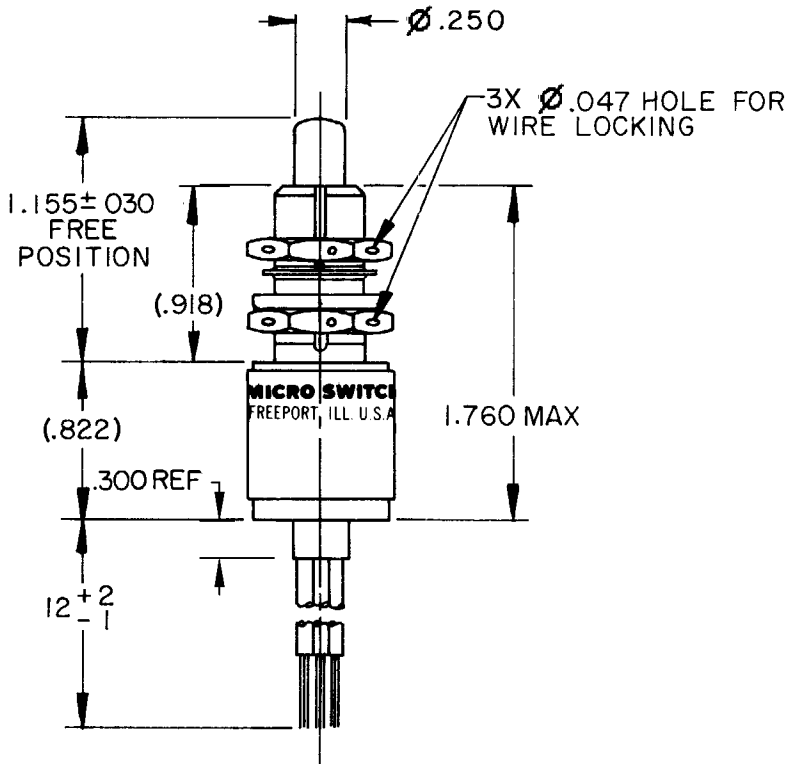
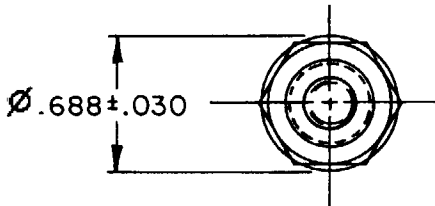
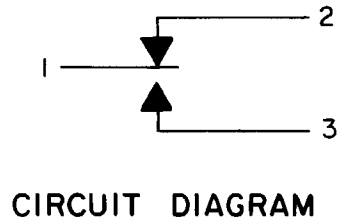
05JUL07

**MICRO SWITCH**  
FREEPORT, ILLINOIS, U.S.A.  
A DIVISION OF HONEYWELL  
FED. MFG. CODE 91929

SWITCH-ENCLOSED

CATALOG LISTING  
**602EN537-1B**  
CUSTOMER PART NO.  
19207-12292794-3

Furnished under United States Government Contract No. \_\_\_\_\_  
Shall not be either released outside the Government, or used, duplicated or disclosed in whole or in part for manufacture or procurement, without the written permission of MICRO SWITCH, A Division of Honeywell, except for: (I) emergency repair or overhaul work by or for the Government, where the item or process concerned is not otherwise reasonably available to enable timely performance of the work; or (II) release to a foreign government, as the interests of the United States may require; provided that in either case the release, use, duplication or disclosure hereof shall be marked on any reproduction hereof in whole or in part.



ANSI Y14.5M-1982 APPLIES

**CHARACTERISTICS**  
OPERATING FORCE ——— 3-6 LB  
FULL OVERTRAVEL FORCE ——— 17 LB MAX  
RELEASE FORCE ——— 2 LB MIN  
PRETRAVEL ——— .040 MAX  
DIFFERENTIAL TRAVEL ——— .020 MAX  
OVERTRAVEL ——— .125 MIN

**ELECTRICAL DATA**  
CONTACT ARRANGEMENT  
S P D T  
28 VDC  
LOAD  
SEA LEVEL 50,000 FT  
RES 7 7  
IND 4 2.5  
MOTOR 4  
LAMP

SCALE FULL			
DO NOT SCALE PRINT			
TOLERANCES			
APPLY TO DESIGN UNITS. CONVERSIONS ARE ONLY FOR REFERENCE. UNLESS NOTED, TOLERANCES ARE:			
DIM.	TOL.	DIM.	TOL.
mm	mm/in	in	mm/in
NO. PLACES	X	1/104	
ONE PLACE	X X	0.47/016	X X 0.8/03
TWO PLACES	X X X	0.157/006	X X X 0.38/015
THREE PLACES	X X X X		X X X X 0.13/003
ANGLES			
SYMMETRIC		US CUSTOMARY	
DESIGN UNITS	<input type="checkbox"/>		<input checked="" type="checkbox"/>
THIRD ANGLE PROJECTION			
WEIGHT 6.2 OZ MAX			

- NOTES
- 1 - CORROSION RESISTANT STEEL ENCLOSURE
  - 2 - SWITCH SEALED PER MIL-PRF-8805 SYMBOL 4
  - 3 - CIRCUIT IDENTIFICATION, CATALOG LISTING, CUSTOMER PART NO. AND REVISION LETTER ARE SHOWN ON NAMEPLATE
  - 4 - COINCIDENCE OF OPERATING AND RELEASING POINTS: .010 OF PLUNGER TRAVEL
- 5 HARDWARE MAY BE PACKAGED UNASSEMBLED PER MIL-PRF-8805

# Mouser Electronics

Authorized Distributor

Click to View Pricing, Inventory, Delivery & Lifecycle Information:

[Honeywell:](#)

[602EN537-1B](#)