

PRODUCT NO.

73725

PRODUCT NUMBER CODE

73725-X X X X LF

HOUSING COLOR OPTION

0-WHITE
1-BLACK

SENSOR CONTACT OPTION

0-WITH SENSOR CONTACT
1-WITHOUT SENSOR CONTACT

SHIELD PLATING OPTION

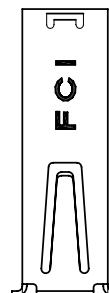
- 1- 1.25µm MINIMUM NICKEL UNDERPLATE & 2.5µm MINIMUM BRIGHT TIN OVER ALL AREA. (HOLD DOWN STYLE "A")
- 2- 1.25µm MINIMUM NICKEL UNDERPLATED OVER ALL; 2.5 µm MINIMUM BRIGHT TIN PLATED ON HOLD DOWN AREA ONLY. (HOLD DOWN STYLE "B")
- 3- 1.25µm MINIMUM NICKEL UNDERPLATED OVER ALL; 2.5 µm MINIMUM BRIGHT TIN PLATED ON HOLD DOWN AREA ONLY. (HOLD DOWN STYLE "A")
- 4- 1.25µm MINIMUM NICKEL UNDERPLATED & 2.5µm MINIMUM BRIGHT TIN OVER ALL AREA. (HOLD DOWN STYLE "B")
- 5- 1.25µm MINIMUM NICKEL UNDERPLATED OVER ALL; 2.5µm MINIMUM BRIGHT TIN PLATED ON HOLD DOWN AREA ONLY (HOLD DOWN STYLE "C")
- 6- 1.25µm MINIMUM NICKEL ONLY. (HOLD DOWN STYLE "A")
- 7- 1.25µm MINIMUM NICKEL UNDERPLATED & 2.5 µm MINIMUM MATTE TIN PLATED OVER ALL. (HOLD DOWN STYLE "A")
- 8- 1.25µm MINIMUM NICKEL UNDERPLATED & 2.5 µm MINIMUM MATTE TIN PLATED ALL AREA. (HOLD DOWN STYLE "B")
- 9- 1.25µm MINIMUM NICKEL UNDERPLATED OVER ALL; 2.5 µm MINIMUM MATTE TIN PLATED ON HOLD DOWN AREA ONLY (HOLD DOWN STYLE "D")
- S- 1.25µm MINIMUM NICKEL ONLY; (HOLD DOWN STYLE "A"). HIGH PERFORMANCE MATERIAL FOR 12,000 DURABILITY CYCLES
- A- 1.25µm MINIMUM NICKEL PLATED OVER ALL. 2.5 µm MINIMUM MATTE TIN PLATED ON HOLD DOWN AREA ONLY (HOLD DOWN STYLE "B")

TERMINAL PLATING OPTION

- 0-50u" NI UNDERPLATE; 30u" GXT CONTACT AREA
100u" TIN TAIL AREA; TAIL LENGTH: 2.29
- 1-50u" NI UNDERPLATE; 30u" GXT CONTACT AREA
100u" TIN TAIL AREA; TAIL LENGTH: 3.71

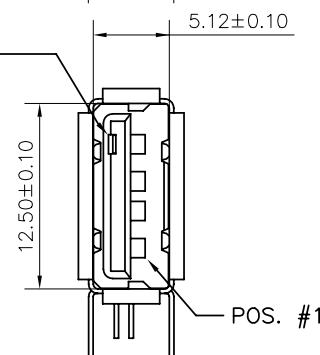
NOTES:

1. MATERIAL:
CONTACTS: COPPER ALLOY
SHIELD: COPPER ALLOY
HOUSING: UL 94V-0 THERMOPLASTIC, COLOR: SEE PRODUCT CODE
2. PLATING:
CONTACTS: GOLD FLASH OVER PALLADIUM NICKEL (0.76µm MINIMUM)
IN CONTACT AREA; 2.5 µm TIN MINIMUM IN SOLDER TAIL AREA.
1.27 µm MINIMUM NICKEL UNDERPLATE OVER ALL SURFACES.
SHIELD: SEE PRODUCT NUMBER CODE.
(THE PLATING MEASURE POINT ON THE SHIELD HOLD DOWN AREA ONLY).
- ③ DATUMS & BASIC DIMENSIONS TO BE DETERMINED BY CUSTOMER
4. RECOMMENDED PCB BOARD THICKNESS IS 1.00 ~ 1.60mm EXCEPT 73725-1191BLF; 73725-1191BLF CAN BE USED FOR THE PCB BOARD THICKNESS 2.30 ~ 2.65mm.
- ⑤ MAXIMUM PANEL THICKNESS TO BE 2.67mm IF MOUNTED BEHIND PANEL
6. METAL SHELL SLIVER 0.20 MAX.
7. NI PLATING DOES NOT COMPLY WITH THE USB STANDARDS
(TO BE CONTINUED)

LEAD FREE OPTION
SEE NOTE 9PACKAGING OPTION
B - TUBE
R - TAPE&REEL

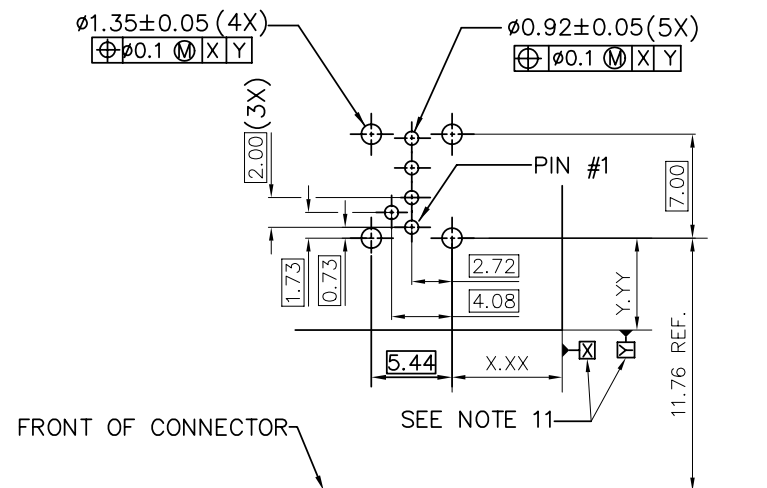
5.76

SENSOR CONTACT



POS. #1

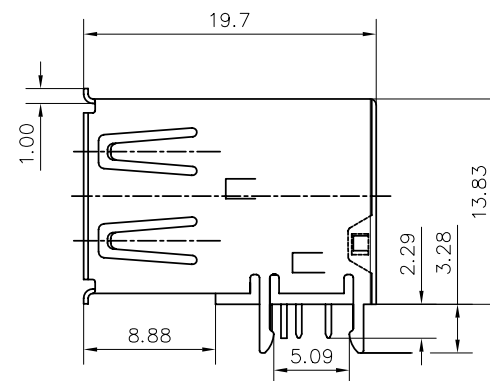
WITH SENSOR CONTACT



FRONT OF CONNECTOR

SEE NOTE 11

PC BOARD MOUNTING DIMENSIONS FOR 5 PIN

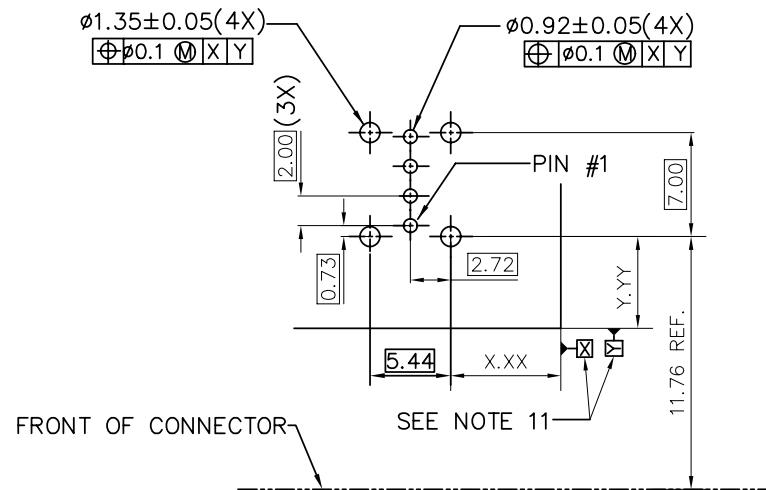
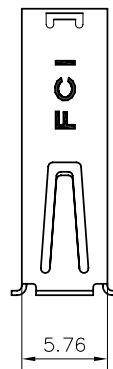
FOR 73725-X0X0B
HOLD DOWN STYLE "A"

mat'l code				tolerance unless otherwise specified		CUSTOMER COPY		FCI	
rev.	ecn no.	dr	date	linear	.0 ± .30	projection	title	www.fclconnect.com	
AB	N09-0202	R.B	2009/06/25		.00 ± .20		USB UP-RIGHT RECEPT		
AC	N10-0128	A.ZH	05/14/2010		.000± 0.10				
AD	ELX-N-01000	A.ZH	06/25/2012	angles	± 2°				
AE	ELX-N-13463	A.ZH	11/14/2012	dr	PAMP	5/20/97	unit	product family USB	code
AF	ELX-N-14592	J.HAN	06/10/2013	enrg	R Y LIU	5/20/97	mm	size dwg no.	NT
				chr	R Y LIU	5/20/97	scale	A3	73725
				appd	JENN TSAO	5/20/97			sheet 1 OF 4
sheet	revision	AF							
index	sheet	1-4							

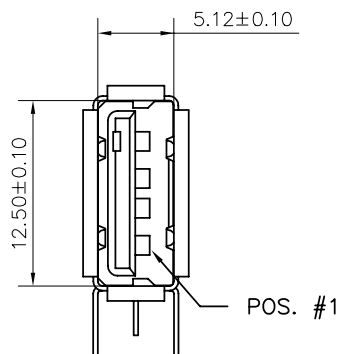
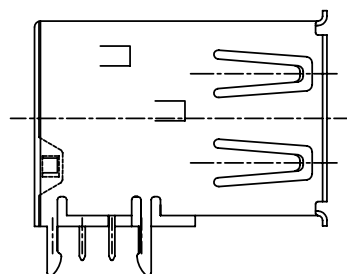
PRODUCT NO.
73725

(CONTINUED)

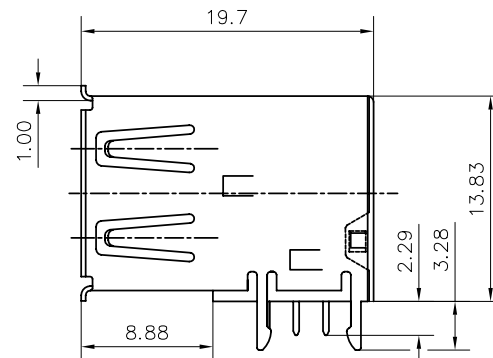
8. P/N'S WITH SUFFIX "LF" ARE LEAD FREE P/N'S
9. FOR LEAD FREE P/N, THE PRODUCT MEET EUROPEAN UNION DIRECTIVES AND OTHER COUNTRY REGULATION AS DESCRIBED IN GS-22-008
10. FOR THE PRODUCTS WITH THE METAL SHELL PLATING NICKEL AND MATTE SN CAN WITHSTAND EXPOSURE TO 260°C PEAK TEMPERATURE FOR 40 SECONDS IN A CONVECTION, INFRA-RED OR VAPOR PHASE REFLOW PROCESS; FOR THE PRODUCTS WITH METAL SHELL PLATING BRIGHT SN OR SEMI-BRIGHT SN CAN'T WITHSTAND REFLOW AND JUST CAN WITHSTAND EXPOSURE TO 260°C PEAK TEMPERATURE FOR 10 SECONDS IN WAVE SOLDERING PROCESS.
11. FOR ALL LEAD FREE P/N'S, WITH SUFFIX LF.
12. THE PRODUCT CAN BE USED FOR PIP PROCESS
13. DATUM OF CUSTOMER'S PCB LAYOUT.



PC BOARD MOUNTING DIMENSIONS FOR 4 PIN



WITHOUT SENSOR CONTACT



FOR 73725-X1X0B

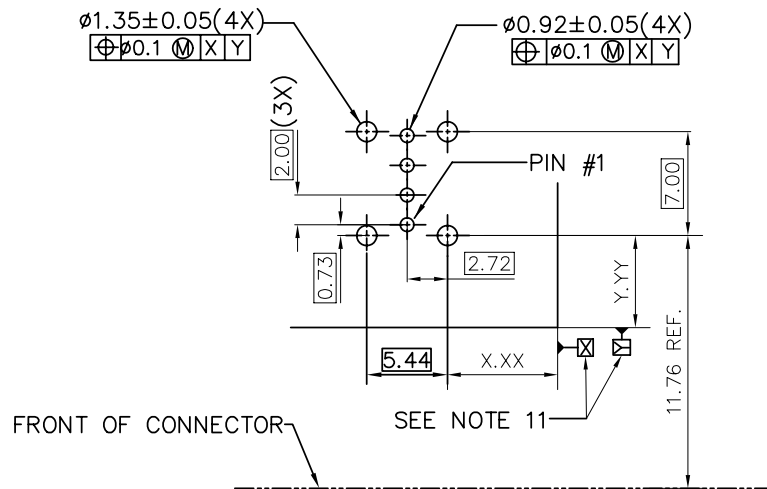
mat'l code				tolerance unless otherwise specified		CUSTOMER COPY		FCI	
rev.	ecn no.	dr	date	linear	.0 ± .30	projection	title	www.fciconnect.com	
AF					.00 ± .20		USB UP-RIGHT RECEPT		
					.000± 0.10				
				angles	± 2°				
				dr	PETER PAM 9/4/97	unit	product family USB	code NT	
				enr	R Y LIU 9/4/97	mm	size	sheet 2 OF 4	
				chr	R Y LIU 9/4/97	scale	dwg no.		
				appd	JENN TSAO 9/4/97		A3	73725	
sheet	revision								
index	sheet								



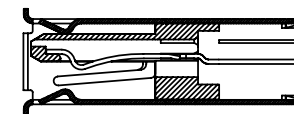
Copyright FCI.

PRODUCT NO.

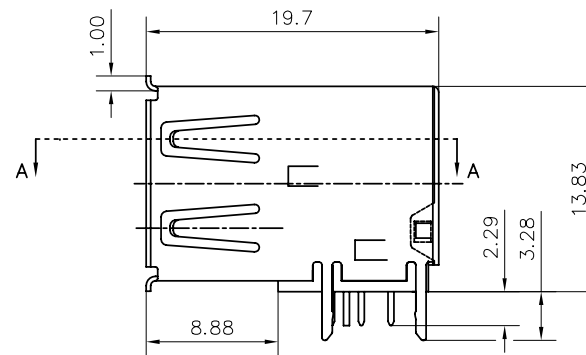
73725



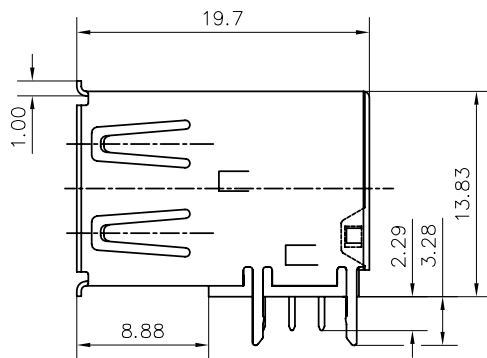
PC BOARD MOUNTING DIMENSIONS FOR 4 PIN



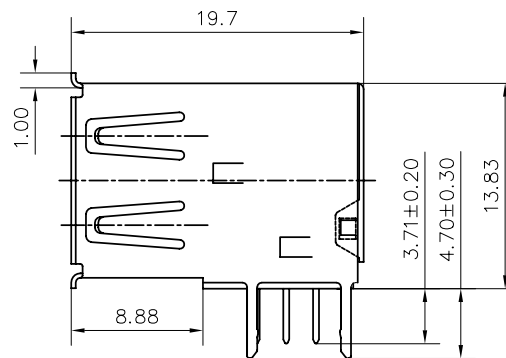
SECTION A-A




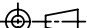
WITH SENSOR CONTACT
FOR 73725-X0X0B
HOLD DOWN STYLE "B"



WITHOUT SENSOR CONTACT
FOR 73725-X1X0B
HOLD DOWN STYLE "B"



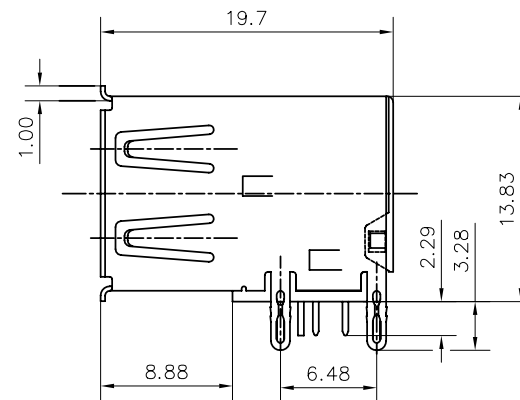
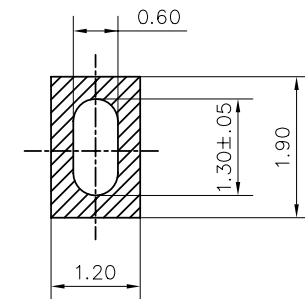
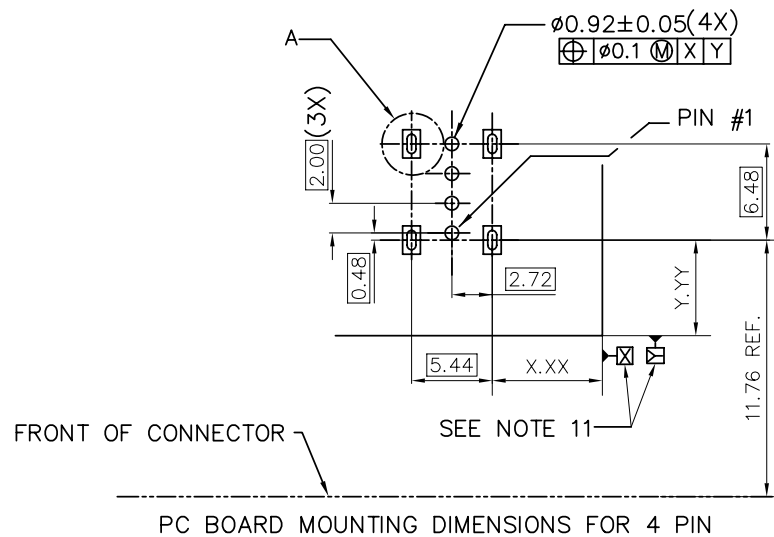
WITHOUT SENSOR CONTACT
FOR 73725-X191XLF
HOLD DOWN STYLE "D"

mat'l code				tolerance unless otherwise specified			CUSTOMER COPY		 www.fciconnect.com	
rev.	ecn no.	dr	date	linear	.0 ± .30		projection 	title USB UP—RIGHT RECEPT		
AF					.00 ± .20					
					.000± 0.10					
				angles	± 2°					
				dr	PETER	5/20/97	unit	product family USB		code
				engr	JOHN WEN	5/20/97	mm			NT
				chr	JOHN WEN	5/20/97	scale	size	dwg no.	sheet
				appd	JENN TSAO	5/20/97		A3	73725	3 OF 4
sheet	revision									
index	sheet									


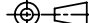


Copyright FCI.

PRODUCT NO.
73725



WITHOUT SENSOR CONTACT
FOR 73725-X1X0B
HOLD DOWN STYLE "C"

mat'l code				tolerance unless otherwise specified				CUSTOMER COPY		FCI  www.fciconnect.com	
rev.	ecn	no.	dr	date	linear	.0 ± .30		projection 	title USB UP-RIGHT RECEPT		
AF				.00 ± .20							
				.000± 0.10							
					angles	± 2°					
				dr	PETER	01/12/99	unit	product family USB			code
				enr	R Y LIU	01/12/99	mm	size	dwg no.		NT
				chr	R Y LIU	01/12/99	scale	A3	73725		sheet
				appd	JENN TSAO	01/12/99					4 OF 4
sheet	revision										
index	sheet										

Mouser Electronics

Authorized Distributor

Click to View Pricing, Inventory, Delivery & Lifecycle Information:

FCI:

[73725-0110B](#)