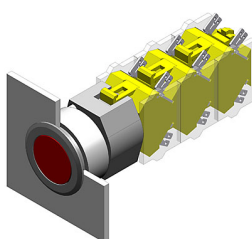


EAO – Your Expert Partner for Human Machine Interfaces

704.011.818 - Pushbutton actuator

704.011.818 - Pushbutton actuator



Attention: The preview is based on a sample product. This can differ from your current configuration.

Mounting

Mounting cut-out	Ø 30.5 mm
Design	flush

Front

Front shape	round
Front dimension	Ø 35 mm
Front ring material	Aluminium
Front ring colour	natural anodized

Other Attributes

Weight	0.051 kg
--------	----------

Operating-/Indication part

Lens optics	opaque
Lens material	Aluminium
Lens colour	natural
Lens profile	flat

IP-Rating

Front protection	IP 65
------------------	-------

Actuator

Switching action	Momentary
Housing material	Plastic
Housing colour	grey

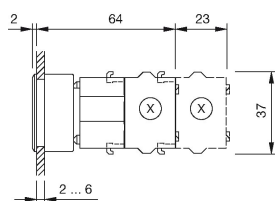
Function

Pushbutton

EAO – Your Expert Partner for Human Machine Interfaces

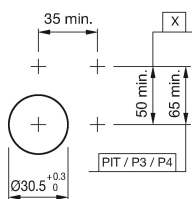
704.011.818 - Pushbutton actuator

Dimensions



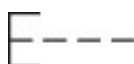
X = Screw terminal

Mounting cut-outs



PIT = Push-in terminal

Wiring diagram



Additional information

Max. 3 switching elements can be clipped on
The colour of anodized aluminium parts can vary due to technical
production reasons

Legend

Switching action: B = Momentary