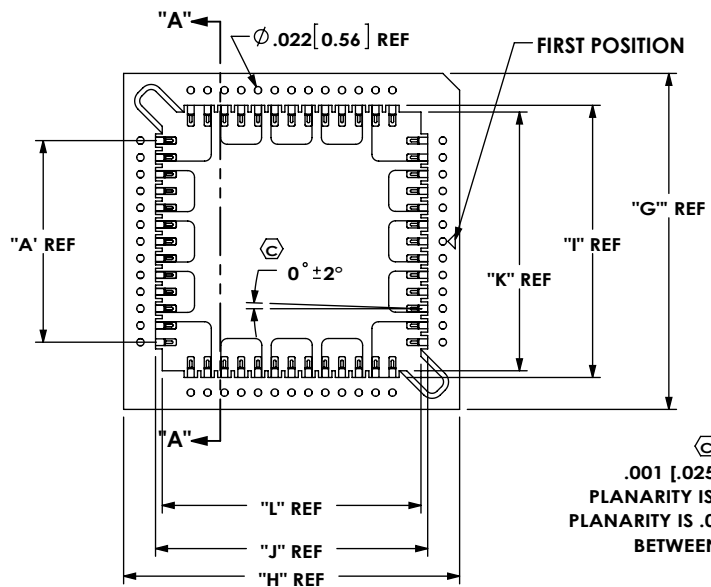
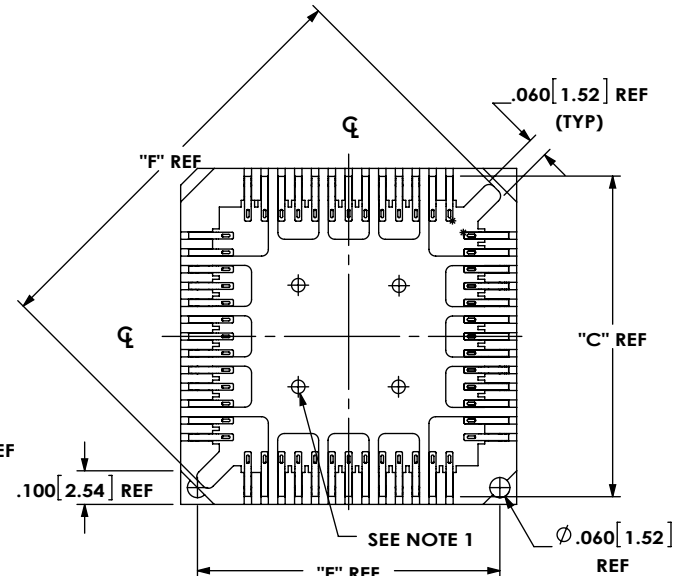
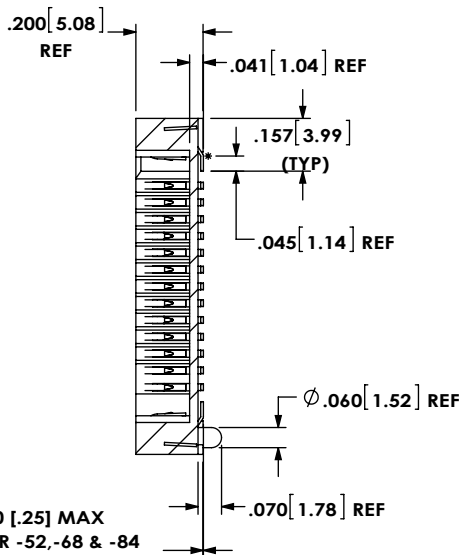


IN-PROCESS



.001 [.025] MIN TO .010 [.25] MAX
PLANARITY IS .008 [.20] FOR -52, -68 & -84
PLANARITY IS .006 [.15] FOR -20, -28, -32, & -44
BETWEEN ANY TWO CONTACTS

SECTION "A"-"A"
SCALE 1.75 : 1

PLCC-0XX-XX-X-XX

No OF POSITIONS
(SEE TABLE 1 "XX")

PACKAGING OPTION
BLANK: PACKAGING TUBE
(SEE SHT 2, PACKAGING TUBE SPEC)
-TR: TAPE AND REEL
(SEE SHT 2, TAPE AND REEL SPEC)

PLATING SPECIFICATIONS

-T: MATTE TIN CONTACT AND TAIL
-F: 3μ" FLASH SELECTIVE GOLD CONTACT AREA,
MATTE TIN ON TAIL
-TM: MATTE TIN CONTACT AND TAIL
-FM: 3μ" FLASH SELECTIVE GOLD IN CONTACT AREA,
MATTE TIN ON TAIL

OPTION

-A: ALIGNMENT PIN
(SPECIFY -A IN BODY SPEC -X IN TABLE 1)
FOR EXISTING CUSTOMERS ONLY:
POSITIONS 20, 28, 52, 68 & 84
-N: NO ALIGNMENT PIN
(SPECIFY -N IN BODY SPEC -X IN TABLE 1)
FOR EXISTING CUSTOMERS ONLY:
POSITIONS 28, 52 & 84)

TABLE 1																
"XX"	BODY SPEC	TUBE	PLUG	"A"	"B"	"C"	"D"	"E"	"F"	"G"	"H"	"I"	"J"	"K"	"L"	CONTACT
20	PLCC-20-X	PT-1-24-06-51	TP-13	4	04	.555 [14.10]	.555 [14.10]	.500 [12.70]	.675 [17.15]	.600 [15.24]	.600 [15.24]	.410 [10.41]	.410 [10.41]	.370 [9.40]	.370 [9.40]	C-46-XX
28	PLCC-28-X	PT-1-24-01-51	TP-13	6	06	.655 [16.64]	.655 [16.64]	.600 [15.24]	.818 [20.78]	.700 [17.78]	.700 [17.78]	.510 [12.95]	.510 [12.95]	.470 [11.94]	.470 [11.94]	C-46-XX
32	PLCC-32-X	PT-1-24-01-51	TP-13	8	08	.655 [16.64]	.755 [19.18]	.700 [17.78]	.890 [22.61]	.700 [17.78]	.800 [20.32]	.510 [12.95]	.610 [15.49]	.470 [11.94]	.570 [14.48]	C-46-XX
44	PLCC-44-X	PT-1-24-02-51	TP-13	10	10	.855 [21.72]	.855 [21.72]	.800 [20.32]	1.100 [20.32]	.900 [22.86]	.900 [22.86]	.710 [18.03]	.710 [18.03]	.670 [17.02]	.670 [17.02]	C-46-XX
52	PLCC-52-X	PT-1-24-03-51	TP-13	12	12	.955 [24.26]	.955 [24.26]	.900 [22.86]	1.242 [31.55]	1.000 [25.40]	1.000 [25.40]	.810 [20.57]	.810 [20.57]	.770 [19.56]	.770 [19.56]	C-46-XX
68	PLCC-68-X	PT-1-24-04-51	TP-13	16	16	1.155 [29.34]	1.155 [29.34]	1.100 [27.94]	1.525 [38.74]	1.200 [30.48]	1.200 [30.48]	1.010 [25.65]	1.010 [25.65]	.970 [24.64]	.970 [24.64]	C-46-XX
84	PLCC-84-X	PT-1-24-05-51	TP-25	20	20	1.355 [34.42]	1.355 [34.42]	1.300 [33.02]	1.808 [45.92]	1.400 [35.56]	1.400 [35.56]	1.210 [30.73]	1.210 [30.73]	1.170 [29.72]	1.170 [29.72]	C-46-XX

CRITICAL DIMENSION INSPECTION
INSTRUCTION TABLE

ASSEMBLY OPERATION	IN-PROCESS INSPECTION
FILL	C1, C2

NOTES:

- .0400 [1.016] DIA X .030 [7.6] HIGH STANDOFFS
ON -32 POSITION ONLY (TYP 4 PLCS)
- ⊙ REPRESENTS A CRITICAL DIMENSION.

UNLESS OTHERWISE SPECIFIED,
DIMENSIONS ARE IN INCHES.

TOLERANCES ARE:

DECIMALS ANGLES
.XX: ±.01 [.3] 2°
.XXX: ±.005 [.13]
.XXXX: ±.0020 [.051]

PROPRIETARY NOTE

THIS DOCUMENT CONTAINS INFORMATION
CONFIDENTIAL AND PROPRIETARY TO
SAMTEC, INC. AND SHALL NOT BE REPRODUCED
OR TRANSFERRED TO OTHER DOCUMENTS OR
DISCLOSED TO OTHERS OR USED FOR ANY
PURPOSE OTHER THAN THAT WHICH IT WAS
OBTAINED WITHOUT THE EXPRESSED WRITTEN
CONSENT OF SAMTEC, INC.

samtec

520 PARK EAST BLVD, NEW ALBANY, IN 47150
PHONE: 812-944-6733 FAX: 812-948-5047
e-Mail info@SAMTEC.com code 55322

MATERIAL: DO NOT SCALE DRAWING

SHEET SCALE: 2:1

CELANESE, VECTRA E130 UL RATED 94V-O
COLOR: BLACK
25% MAXIMUM REGRIND
CONTACT: BeCu 172 SHM TEMPER

F:\DWG\MISC\MTKG\PLCC-0XX-XX-X-XX-MKT.SLDDRW

DESCRIPTION:

PLCC ASSEMBLY

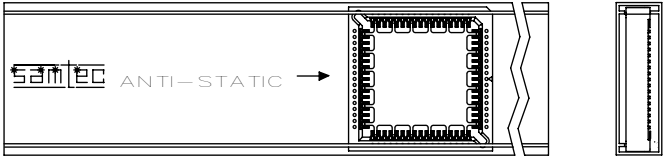
DWG. NO.

PLCC-0XX-XX-X-XX

BY: KOLB

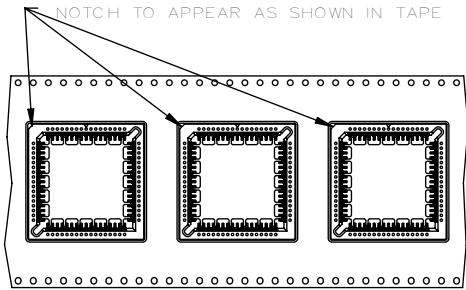
09/12/1991

SHEET 1 OF 2



- A: ALIGNMENT PIN
- N: NO ALIGNMENT PIN

POSITION PARTS IN TUBE WITH THE LOGO'S ARROW POINTING TOWARD THE FIRST POSTION INDICATOR AS SHOWN ABOVE



PARTS TO BE POSITIONED IN TAPE AS SHOWN

PROPRIETARY NOTE
THIS DOCUMENT CONTAINS INFORMATION
CONFIDENTIAL AND PROPRIETARY TO
SAMTEC, INC. AND SHALL NOT BE REPRODUCED
OR TRANSFERRED TO OTHER DOCUMENTS OR
DISCLOSED TO OTHERS OR USED FOR ANY
PURPOSE OTHER THAN THAT WHICH IT WAS
OBTAINED WITHOUT THE EXPRESSED WRITTEN
CONSENT OF SAMTEC, INC.

DO NOT SCALE DRAWING

SHEET SCALE: 2:1

samtec

520 PARK EAST BLVD, NEW ALBANY, IN 47150
PHONE: 812-944-6733 FAX: 812-948-5047
e-Mail info@SAMTEC.com code 55322

DESCRIPTION:
PLCC ASSEMBLY

DWG. NO.
PLCC-0XX-XX-X-XX

BY: KOLB 09/12/1991 SHEET 2 OF 2