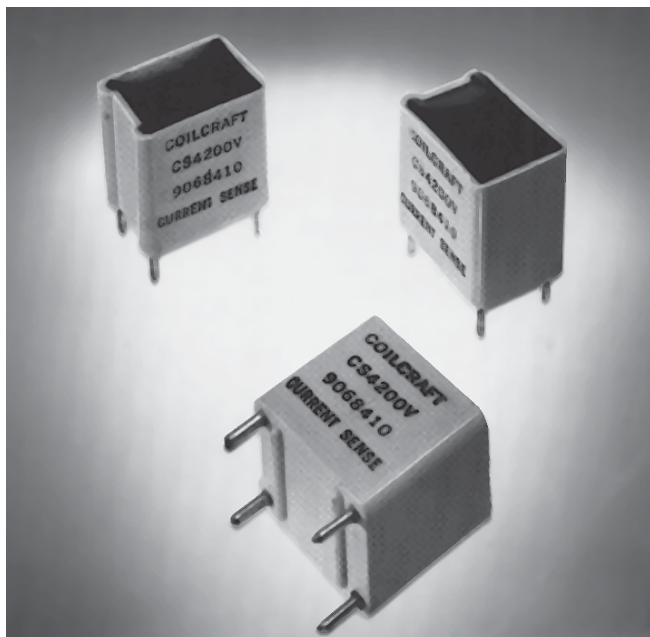




# Current Sensing Transformers



These low cost Coilcraft current sensing transformers are designed for use above 20 kHz. They incorporate the current and sense windings in one small, encapsulated package requiring minimum board space.

Varying the terminating resistance allows sensitivities of 1 to 10 Volts per Ampere output.

Coilcraft current sensing transformers are designed to provide 6 mm creepage/clearance between primary and secondary windings

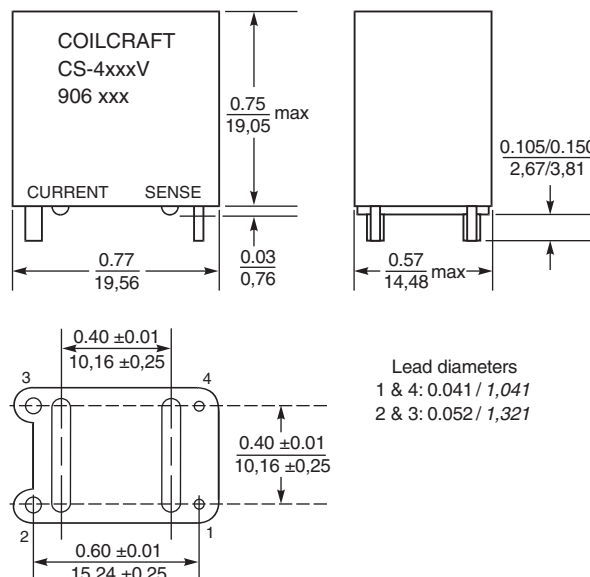
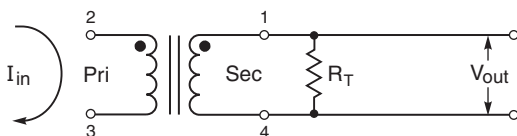
Applications include feedback control, overload sensing, detecting load drop or shutdown, and proportional output.

Coilcraft **Designer's Kit P403** contains the three standard current sensing transformers, sensor-only versions of each, plus two 50/60Hz current sensors. To order, contact Coilcraft or visit <http://order.coilcraft.com>.

Part number	Turns	Inductance (mH)	Sensed current $I_{in}$ max (A)	Sensitivity		Terminating resistance $R_T$ <sup>1</sup> (Ohms)
				$V_{out}$ (V)	$I_{in}$ (A)	
CS4050V-01L	50	5	10	1	1	50
CS4100V-01L	100	20	24	1	1	100
CS4200V-01L	200	80	35	1	1	200

1. Varying terminating resistance increases or decreases output Voltage/ Ampere in conductor.
2. Operating temperature range  $-40^{\circ}\text{C}$  to  $+85^{\circ}\text{C}$ .
3. Electrical specifications at  $25^{\circ}\text{C}$ .

## Typical Circuit



**Weight:** 8.8 – 9.3 g  
**Terminations:** Tin-silver over copper

**Coilcraft**®

Specifications subject to change without notice.  
 Please check our website for latest information.

Document 132 Revised 02/01/05

1102 Silver Lake Road Cary, Illinois 60013 Phone 847/639-6400 Fax 847/639-1469

E-mail [info@coilcraft.com](mailto:info@coilcraft.com) Web <http://www.coilcraft.com>