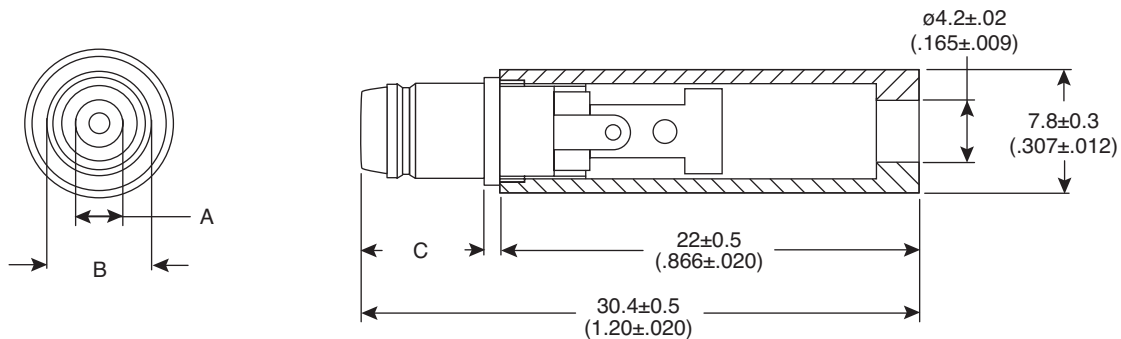


Locking DC Power Plug

1710-2532, 1710-2132

KOBI CONN

Locking DC Power Plug



Dimensions: mm (IN)

Mouser Stock No.	Dimensions (mm)			Housing Color
	A	B	C	
1710-2132	2.1	5.5	7.5	Black
1710-2532	2.5	5.5	7.5	Black

SPECIFICATIONS	
Plastic:	ABS
Cover:	Bakelite
Contacts:	Nickel Plated Copper
Insulation Resistance:	100M Ω @ 500VDC
Rating:	12VDC 1A
Thread Size & Pitch:	M6X0.5 mm

Date Last Revised: 6/21/12

Available from Mouser Electronics
1-800-346-6873
www.mouser.com

KC-300109

1710-2532, 1710-2132

Specifications are subject to change without notice. No liability or warranty implied by this information. Environmental compliance based on producer documentation.

Mouser Electronics

Authorized Distributor

Click to View Pricing, Inventory, Delivery & Lifecycle Information:

[Kobiconn:](#)

[1710-2132](#) [1710-2532](#)