

NOTES: (C)

1. DRAWING TO BE INTERPRETED IN ACCORDANCE WITH THE CURRENT REVISION OF ASME Y14.5M.
2. THIS PART/PRODUCT IS TO BE MANUFACTURED WITH THE APPLICABLE REGULATIONS OF EC DIRECTIVES 2002/95/EC AND 2002/96/EC, RESTRICTION OF THE USE OF HAZARDOUS SUBSTANCES IN ELECTRICAL AND ELECTRONIC EQUIPMENT (RoHS) AND WASTE ELECTRICAL AND ELECTRONIC EQUIPMENT (WEEE).
3. TERMINAL IDENTIFICATION SHOWN FOR REFERENCE ONLY. (SWITCH IS NOT MARKED WITH TERMINAL IDENTIFICATION.)

PART NUMBER CODE

T 4 - T C K 3 3



SCALE 1:1

T4-TCK33_				
REV	OCN #	DATE	APR	
A	020710	01 DEC 03	DGK	
B	024196	21 SEP 04	DGK	
C	049072	29 MAY 09	RAS	

SWITCH CHARACTERISTICS

ELECTRICAL

ELECTRICAL RATING: SEA LEVEL	
LOAD	28VDC
RESISTIVE	2 AMPS
INDUCTIVE	1 AMPS
DWV	1050 VRMS

LOW LEVEL RATING: 10 MILLIAMPERES AT 30 MILLIVOLTS MAX. D.C. OR PEAK A.C. PER MIL-PRF-8805.

ELECTRICAL ENDURANCE: 150,000 MIN. (COMMERCIAL)

MECHANICAL

MECHANICAL ENDURANCE: 500,000 MIN.  
PRETRAVEL: 9.5° MAX.  
OVER TRAVEL: 1.5° MIN.  
RETURN POINT: 4° MIN.  
OPERATING FORCE: .75±.25 LBS.  
BUTTON STRENGTH: 10 LBS. MIN. PULL  
CONTACT MADE IN THE DIRECTION OF BUTTON TRAVEL.

PHYSICAL

TEMPERATURE RANGE: -55°C TO +85°C  
SEAL: WATER RESISTANT PER MIL-STD-810F, METHOD 506.4, PROCEDURE 3 (DRIP).  
BUTTON: NYLON, CHOICE OF COLOR (SEE PART NUMBER CODE)  
CASE: GLASS FILLED POLYESTER, BLACK

MARKING

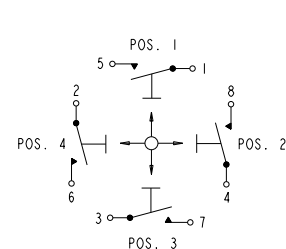
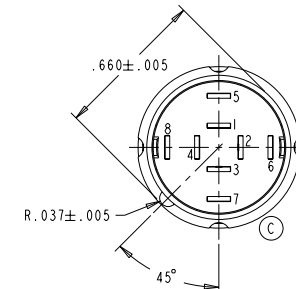
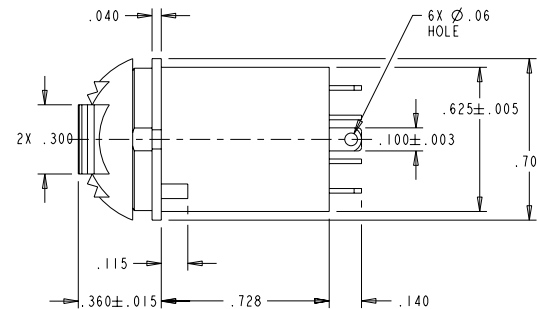
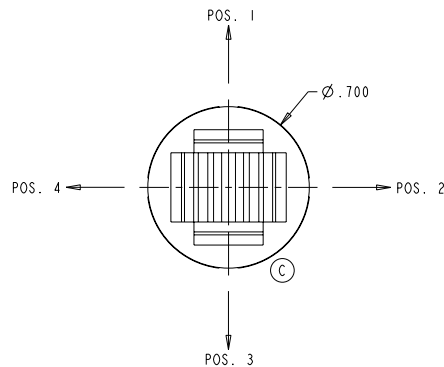
OTTO, 21649  
T4-TCK33\_ (SEE PART NUMBER CODE)  
DATE CODE (YYWW)

CURRENT RATING

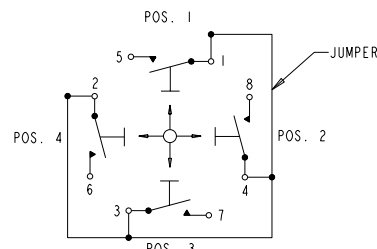
1. STANDARD
2. LOW LEVEL
3. STANDARD WITH INTERNAL JUMPER
4. LOW LEVEL WITH INTERNAL JUMPER

BUTTON COLOR

1. RED
2. BLACK
8. GRAY



(C) SPST-NO  
4 WAY  
SCHEMATIC



(C) 4 WAY WITH COMMON JUMPER  
SCHEMATIC



UNLESS OTHERWISE SPECIFIED:  
DIMENSIONS ARE IN INCHES.  
TOLERANCES:  
.XX ±.03  
.XXX ±.010  
ANGLES ±2°  
DO NOT SCALE

**OTTO**  
CARPENTERSVILLE, ILLINOIS USA

THIS DOCUMENT IS THE CONFIDENTIAL PROPERTY OF OTTO ENGINEERING, INC.. IT IS NOT TO BE USED IN ANY WAY DETRIMENTAL TO THE INTERESTS OF OTTO ENGINEERING, INC..

DESCRIPTION

T4-T, SWITCH, TACTILE MINI TRIM,  
4 WAY, 4-WAY JOG BUTTON

DRWN.	JFC	SIZE	FSCM NO	DRAWING NO.	REV.
CHKD.	JFC	B	21649	T4-TCK33_	C
APPD.	RTK				
WT.					

THIRD ANGLE PROJECTION

Scale 2:1 Sheet 1 OF 1

# Mouser Electronics

Authorized Distributor

Click to View Pricing, Inventory, Delivery & Lifecycle Information:

OTTO:

[T4-TCK3338](#) [T4-TCK3312](#) [T4-TCK3322](#) [T4-TCK3332](#) [T4-TCK3318](#)