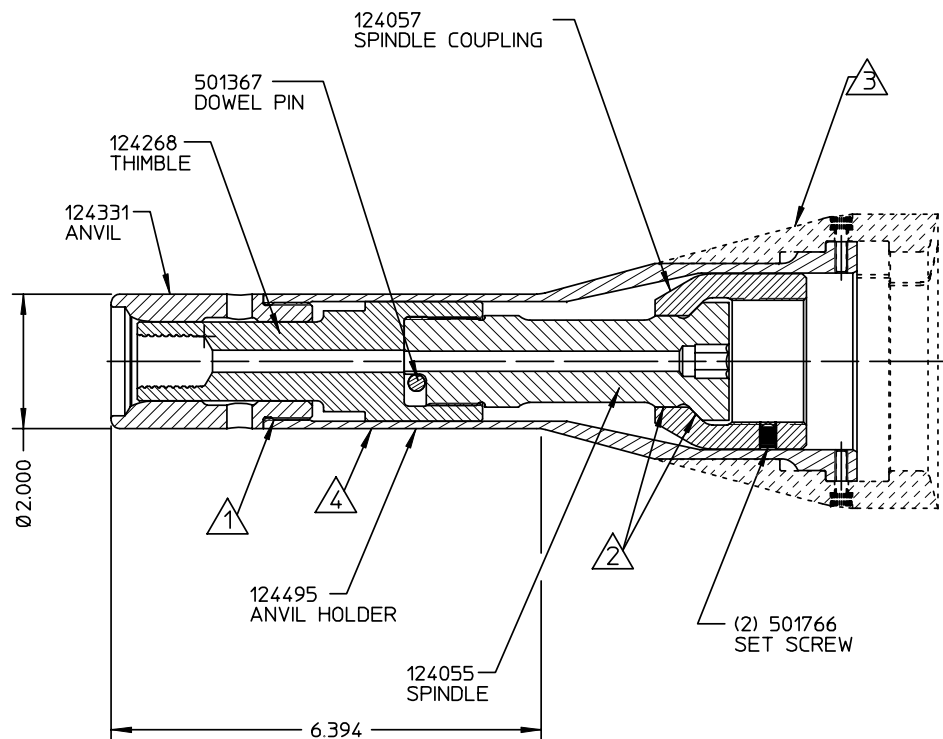
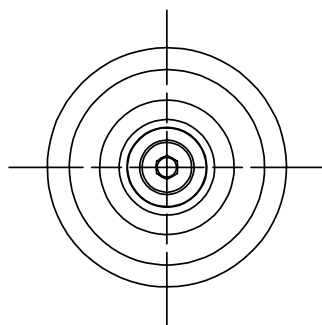


DATA SHEET



NOTES:

- ① APPLY LOCTITE 242 P/N 505016 TO THIS THREADED JOINT.
- ② APPLY GREASE P/N 620030 TO SPINDLE BEFORE ASSEMBLY INTO SPINDLE COUPLING.
- ③ ALUMINUM SPLIT RING, P/N 124058 AND ACCOMPANYING ASSEMBLY SCREWS (4), P/N 500102 MAY BE USED WITH THIS NOSE ASSEMBLY AND SHOULD BE ORDERED SEPARATELY, IF DESIRED.
- ④ APPLY WARNING STICKER P/N 590273 TO ANVIL HOLDER. DO NOT PERMIT STICKER TO OVERLAP ONTO ANVIL.

TO ASSEMBLE SPINDLE/THIMBLE:

- A) INSERT SPINDLE 124055 INTO SPINDLE COUPLING 124057.
- B) THREAD THIMBLE 124268 ON SPINDLE 124055 UNTIL SPINDLE BOTTOMS.
- C) BACK OFF SPINDLE 124055 UNTIL FLAT IS ALIGNED WITH THE DOWEL PIN HOLES IN THE THIMBLE 124268.
- D) INSTALL DOWEL PIN 501367.

Alcoa Fastening Systems

Commercial Products
1 Corporate Drive, Kingston, NY 12401

99-7419

Part Number

TYPE:	N/A
FASTENER:	M20 HUCKSPIN
TOOL(S):	HS52
Notes: OBSOLETE SUPERSEDED BY: 99-7418-1	Product Revision: D
US Patent:	Date: 07/17/03