

TB62732FUG

Step-up DC/DC Converter for White LED Driver

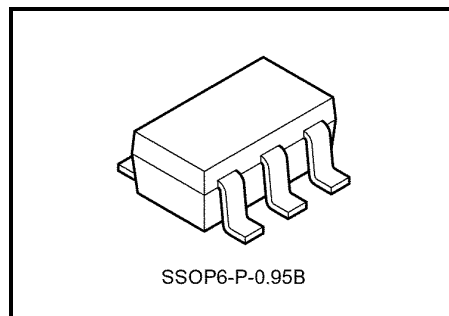
The TB62732FUG is a high-efficiency step-up DC/DC converter designed and optimized for the constant-current lighting of white LEDs.

This IC is particularly suitable for illuminating two to four serial white LEDs with a Li-ion battery.

The IC incorporates an N-ch MOS transistor, which is necessary for switching of the coil.

Also, the LED current I_F can be easily set through the use of an external resistor.

The TB62732FUG is best suited for use as a driver for white LED source backlighting in color LCDs used on PDAs, cellular phones and handy terminal devices.

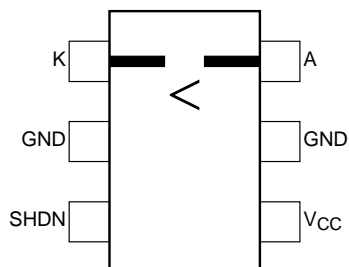


Weight: 0.016 g (typ.)

Features

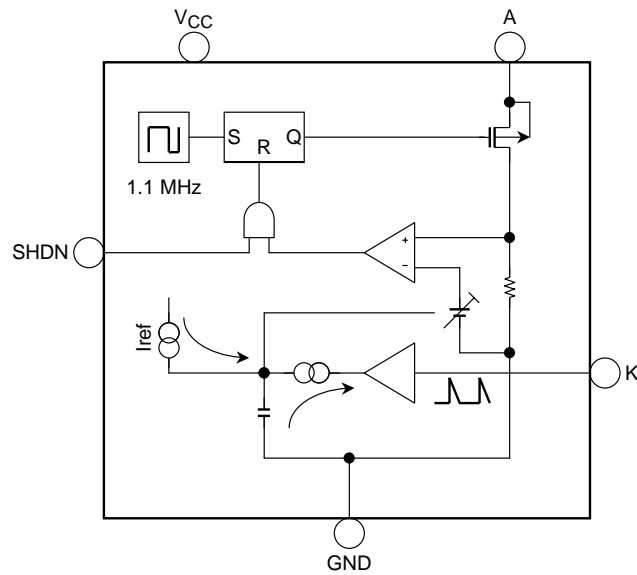
- LED current values can set through the use of an external resistor
 - 15 mA (typ.) @ $R_{\text{sens}} = 3.3 \Omega$
 - 18.5 mA (typ.) @ $R_{\text{sens}} = 2.7 \Omega$
- Efficiency of 80% realized (serial LEDs 2 to 3, $I_F = 20 \text{ mA}$)
- Maximum output voltage: $V_o = 17 \text{ V}$
- Output power: Up to 320 mW supported
- Compact package: 6-pin SOT23 (SSOP6-P-0.95B)
- Built-in N-channel MOS with low ON-resistance (R_{on})
 - $R_{\text{on}} = 2.0 \Omega$ (typ.) @ $V_{\text{CC}} = V_{\text{IN}} = 3.6 \text{ V}$
- Switching frequency: 1.1 MHz (typ.)
- Output capacitor
 - Small capacity of 0.47 μF
- Inductance: 2.2 μH to 10 μH

Pin assignment (top view)



Note 1: This product contains pins that are vulnerable to electrostatic discharge. Handle with care.
This IC may break if mounted 180 degrees in the reverse direction. Be sure to orientate the IC in the correct direction.

Block Diagram



Pin Functions

No	Symbol	Function
1	K	Pin connecting LED cathode to resistor used to set current. Feedback pin for voltage waveforms for controlling the LED constant current.
2, 5	GND	Ground pin for the logic
3	SHDN	IC enable pin. If Low, Standby Mode takes effect and pin A is turned off.
4	V _{CC}	Input pin for power supply for operating the IC. Operating voltage range: 3.0 to 5.5 V
6	A	DC-DC converter switch pin. The switch is an N-channel MOSFET transistor.

Note 2: Connect both GND pins to ground.

Absolute Maximum Ratings

Characteristics	Symbol	Rating	Unit
Supply voltage	V_{CC}	-0.3 to +6.0	V
Input voltage	V_{IN}	-0.3 to $+V_{CC} + 0.3$	V
Switching pin current	I_o (A)	380	mA
Switching pin voltage	V_o (A)	-0.3 to 17	V
Power dissipation	P_D	0.41 (IC only)	W
		0.47 (IC mounted on PCB) (Note 3)	
Saturation thermal resistance	$R_{th(j-a)}$	300 (IC only) 260 (IC mounted on PCB)	°C/W
Operating temperature range	T_{opr}	-40 to +85	°C
Storage temperature range	T_{stg}	-40 to +150	°C
Maximum junction temperature	T_j	125	°C

Note 3: The power dissipation is derated by 3.8 mW/°C from the maximum rating for every 1°C exceeding the ambient temperature of 25°C (when the IC is mounted on a PCB).

**Recommended Operating Conditions
(unless otherwise specified, $T_a = 25^\circ\text{C}$ and $V_{CC} = 3.6\text{ V}$)**

Characteristics	Symbol	Test circuit	Test condition	Min	Typ.	Max	Unit
Supply voltage	V_{CC}	—	—	3.0	—	4.3	V
SHDN pin high-level input voltage	V_{IH}	—	$V_{CC} = 3$ to 4.3 V	2.6	—	V_{CC}	V
SHDN pin low-level input voltage	V_{IL}	—	$V_{CC} = 3$ to 4.3 V	0	—	0.5	V
SHDN pin input pulse width	tpw SHDN	—	SHDN = High and Low level	50	—	—	μs
Set LED current	I_o	—	$V_{CC} = 3\text{ V}$, illuminating series LEDs 2 to 4	5	—	20	mA

Electrical Characteristics**(unless otherwise specified, $T_a = 25^\circ\text{C}$, $V_{CC} = 3.6\text{ V}$, $V_{SHDN} = 3.6\text{ V}$)**

Characteristics	Symbol	Test circuit	Test condition	Min	Typ.	Max	Unit
Supply voltage	V_{CC}	—	—	3.0	—	5.5	V
Current consumption at operation	I_{CC} (on)	—	SHDN = V_{CC}	—	0.52	0.8	mA
Current consumption at standby	I_{CC} (off)	—	SHDN = 0 V	—	0.5	1.0	μA
SHDN pin current	I_{SHDN}	—	SHDN = V_{CC} , Built-in pull-down resistor	—	4.2	7	μA
MOS transistor on-resistance	R_{on}	—	$I_o = 300\text{ mA}$, detection resistance value is contained	—	2.0	2.5	Ω
MOS transistor switching frequency	f_{OSC}	—	—	0.77	1.1	1.43	MHz
Pin A voltage	V_o (A)	—	—	17	—	—	V
Pin A current	I_o (A)	—	—	—	350	380	mA
Pin A leakage current	I_{oz} (A)	—	—	—	0.5	1	μA
Set LED current I_F	I_o	—	$R_{sens} = 2.7\ \Omega$, $L = 6.8\ \mu\text{H}$ (Note 4)	—	18.5	—	mA
LED current V_{CC} dependence	dI_o	—		—	± 8	± 12	%

Note 4: Fluctuation in R_{sens} resistors is not included in the specified value.

The absolute value of I_o may vary and therefore differ from the value specified due to the relation between the inductor value and the load.

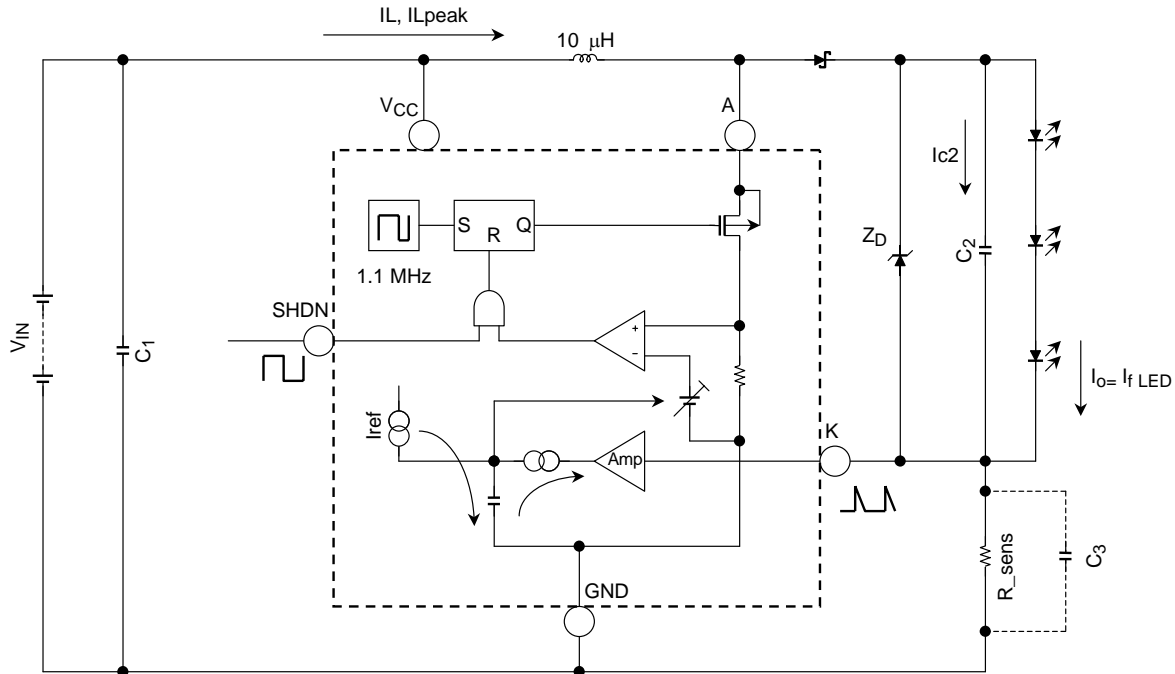


Figure 1 Application Circuit

Basic Operation

The basic TB62732FUG circuit uses a step-up DC/DC converter, and features peak control of the current pulse.

The inductance is turned on and off with the fixed frequency f_{osc} (1.1 MHz (typ.)), and the inductor is charged with energy.

When the inductance is turned on, the inductor current I_L increases from $I_L = 0$; and when $I_L = I_{Lpeak}$ is reached, the inductance is turned off.

At this point, the Schottky diode is turned on and $I_L = I_{c2}$ flows so that the coil may retain $I_L = I_{Lpeak}$.

After that, I_{c2} is decreased, and $I_L = 0$ is reached.

This operation is repeated; and as soon as I_{c2} has fully charged $C2$, I_O flows to the LED.

The details of the basic pulse used for the current control are shown in Figure 2.

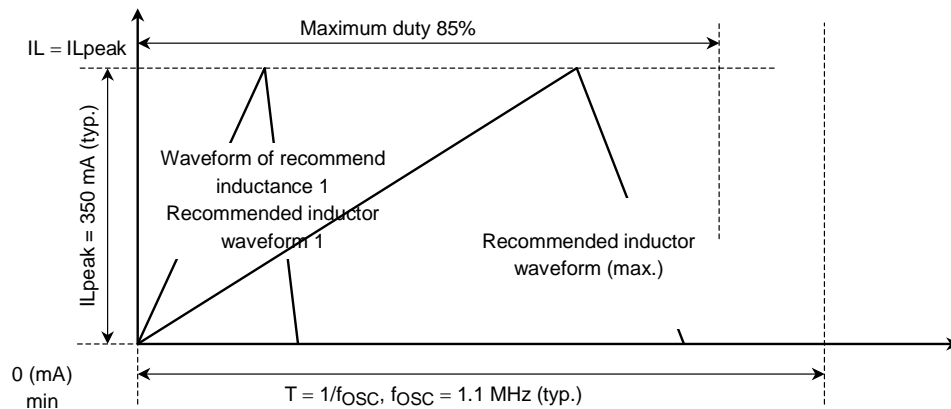


Figure 2 Switching Waveform of Inductance

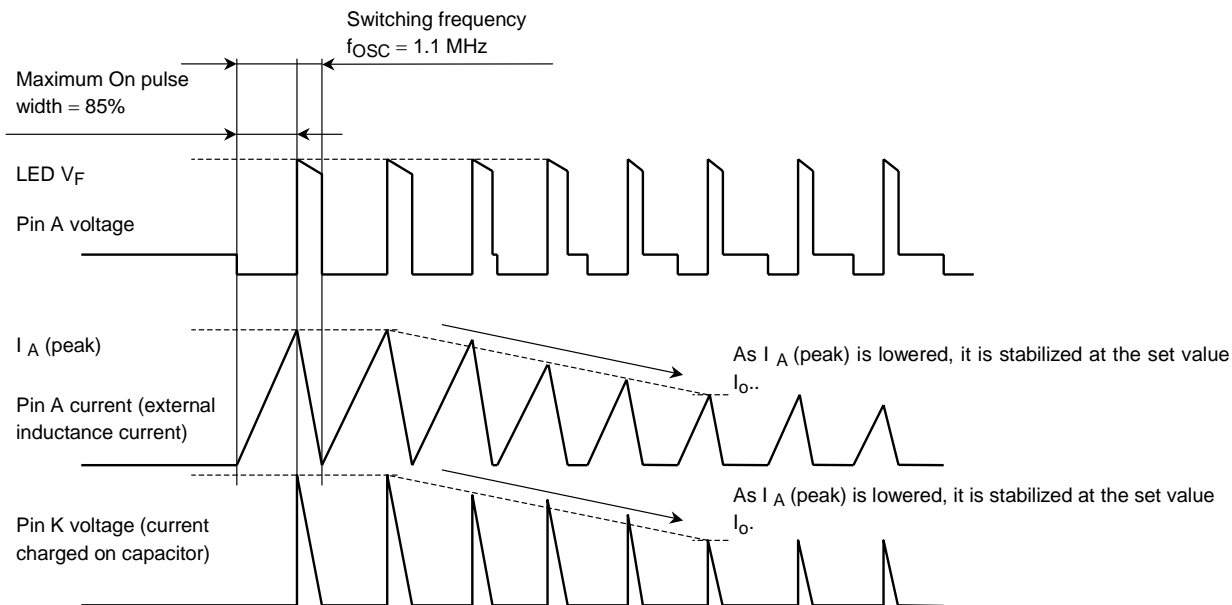


Figure 3 Burst Control Waveforms

State of Peak Current Control

“Peak current control” is control that can vary the peak current pulse shown in Figure 2 on the previous page. The current pulse in Figure 2 is a charging current on the output side capacitor C_2 . This is supplied to the LED as a C_2 discharge current and flows through the R_{sens} resistor to GND.

The charging voltage wave form of C_2 is fed back to the IC from pin K.

In the internal circuit to which it is assumed pin K is input, the mean value of the AC voltage waveform obtained decreases the peak current to an assumed value of approximately 48 to 54 mV.

As a result, a constant current is controlled as an average current in the LED.

Therefore, if $R_{sens} = 2.7 \Omega$ is connected, an I_F current of 19.6 mA can be obtained.

The TB62732FUG is designed to be able to supply a load power of 320 mW (min.). With an inductance of 4.7 to 10 μH , the boost inductor has been optimally designed for this load power of 320 mW.

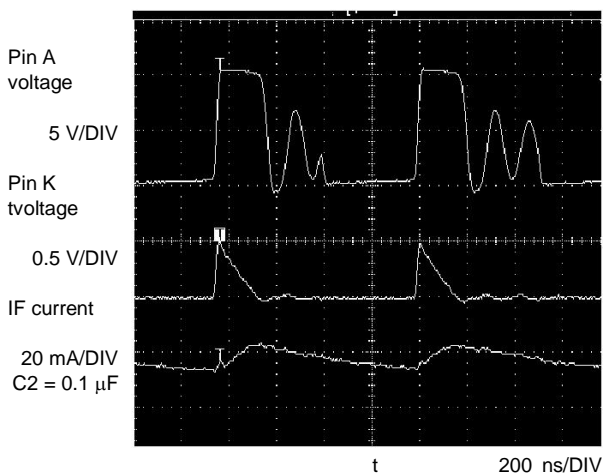
Also, make the inductance small when the load power is low.

A condition applying to the LED load between pins A and K is that

$$V_{IN} (V_{CC}) < LED V_F \text{ total}$$

should be strictly maintained.

The LED will be illuminated always regardless of the IC control. Care should be taken in this regard.



Standby Operation

The SHDN pin is used to set normal or standby operation. When SHDN is set to Low, operation is in standby; when the pin is High, the LED is turned on. Current consumption in Standby Mode is 1 μA (max).

Drive Waveform

The figure on the left is an actual drive waveform.

From the top, the switching voltage waveform of the coil of the generator terminal (pin A), the feedback voltage wave form of pin K, and the LED I_F .

Output-side capacitor setting

To reduce the effect of ripple current, we recommend $C_2 = 0.47 \text{ (}\mu\text{F)}$ or above.

Capacitor $C_2 \text{ (}\mu\text{F)}$	Ripple Current (mA)	Note
0.01	15 to 25	Recommend
0.1	5 to 8	
0.47	2 to 4	
1	1 to 3	

External inductance setting

The minimum external inductance is calculated as follows:

$$L \text{ (}\mu\text{H)} = ((K \times P_o) - V_{IN \text{ min}} \times I_o) \times (1/f_{OSC \text{ min}}) \times 2 \times (1/I_{p \text{ min}} \times I_{p \text{ min}}) \dots \text{ formula 2}$$

The above parameters are described below:

P_o : output power (power required by LED load)

$$P_o \text{ (W)} = V_F \text{ LED} \times I_F \text{ LED} + V_f \text{ schottky} \times I_F \text{ LED} + R_{\text{sens}} \times I_F \text{ LED} \times I_F \text{ LED}$$

LED forward current: $I_F \text{ LED}$ (mA) = Set current: I_o (mA), LED forward voltage: $V_F \text{ LED}$ (V),

Schottky diode forward voltage: $V_f \text{ schottky}$ (V),

Setting resistance: R_{sens} (Ω)

$V_{IN \text{ min}}$ (V): Minimum input voltage (battery voltage)

I_o (A): The average current value established with R_{sens} .

f_{OSC} (Hz): The switching frequency of the internal MOS transistor

	Min	Typ.	Max	Unit
f_{OSC}	0.77	1.1	1.43	MHz

I_p (A): Peak current value for supply to the inductance

	Min	Typ.	Max	Unit
I_p	320	350	380	MHz

For example, the following condition is substituted for the formula:

Input voltage V_{IN} : $V_{IN} = 3 \text{ to } 4.3 \text{ V}$,

$V_F \text{ LED} = 16 \text{ V}$, Schottky diode V_f : Schottky = 0.3 (V) ,

Setup resistance R_{sens} : $R_{\text{sens}} = 2.7 \text{ (}\Omega\text{)}$,

Setup current I_o : $I_o = 18.5 \text{ mA}$,

$L \text{ (}\mu\text{H)} = 5.6 \text{ (}\mu\text{H, } V_{IN} = 3.0 \text{ V)}$ and $6.3 \text{ (}\mu\text{H, } V_{IN} = 4.3 \text{ V)}$.

In this case, Toshiba recommend selection of $L = 5.6 \text{ (}\mu\text{H)}$ when $V_{CC} = 3 \text{ V}$.
This value does not allow for inductor variation and temperature characteristics; therefore we strongly recommend that these factors be taken into account when selecting products.

Selection of R_sens

The resistance R_sens (Ω) between pin K and GND is used for setting the output current I_o. The mean output current I_o can be set using this resistance.

The mean current I_o (mA) to be set is roughly calculated as follows:

$$I_o \text{ (mA)} = V \text{ (K): pin K feedback voltage (mV)} \div R_{\text{sens}} \Omega$$

Number of LEDs	Pin K voltage V (K)	Note
2	48	
3	50	
4	52	

For example, if R_sens = 2.7 (Ω), then I_o = 18.5 (mA) with a current error of ±12%.

The IC has a minimum output P_o = 320 (mW).

In this case, if the product P_o of the set current I_F LED and the output voltage V_F LED exceeds P_o = 320 (mW), it is possible that the current I_F LED will not exceed a given value.

If the IC is not connected to the smoothing capacitor, then I_F LED is obtained as the mean current.

In this instance, because the current which flows to the LED is a triangular waveform current with a maximum peak value of 380 mA, make sure that the inrush current I_{FP} (mA) does not flow to the LED.

Toshiba recommend use of components with low reactance (parasitic inductance) and minimized PCB wiring.

Protection for when the LED is open

The zener diode in the example application circuit in Figure 1 is necessary for over-voltage protection when the LED is open.

It is strongly recommended that a zener diode be connected since this driver lacks a voltage protection circuit.

The zener voltage should satisfy the following conditions:

- i) ≤ maximum output voltage of the TB62732FUG
- ii) ≥ LED aggregate V_f
- iii) ≤ maximum output capacitance C₂.

Moreover, it is possible to control the output current I_{ZD} for when the LED is open by connecting the R_ZD as in Figure 4, and to use a zener diode with lower power dissipation.

Standard for Control of Output Current I_{ZD} through R_ZD Connection
(R_sens = 2.7 Ω)

R_DZ (Ω)	I _{ZD} (mA)
18	3
100	0.1

Since driver characteristics may be adversely affected, Toshiba recommend 100 Ω or less.

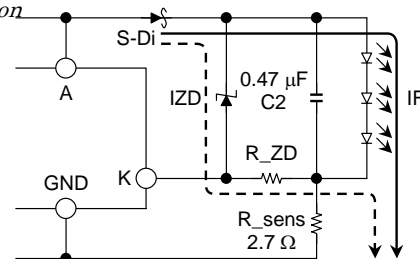
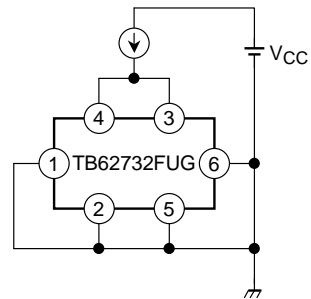
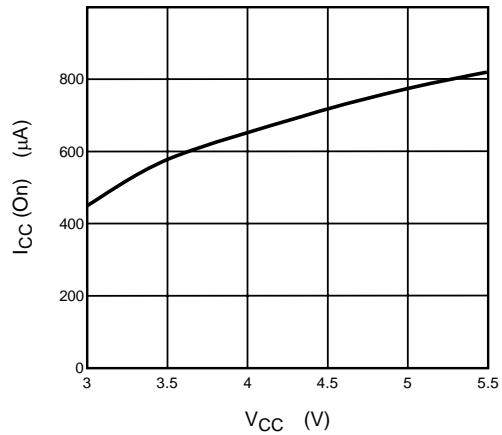
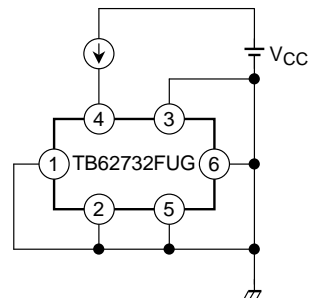
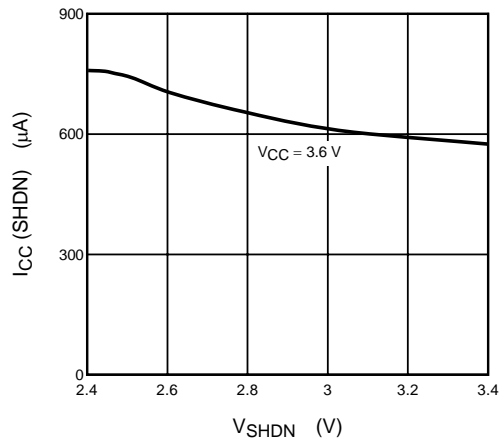


Figure 4 Application Circuit

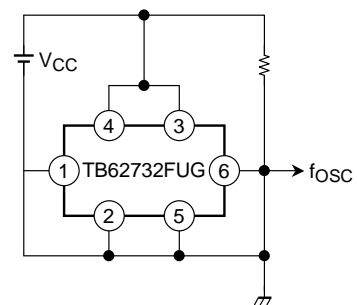
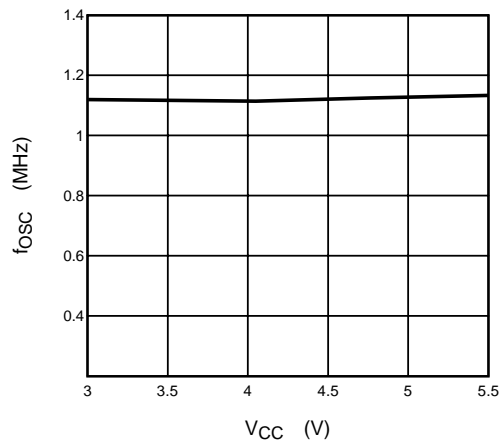
Current consumption at normal operation $I_{CC} (ON)$



Current consumption at shutdown $I_{CC} (SHDN)$



Output switching frequency

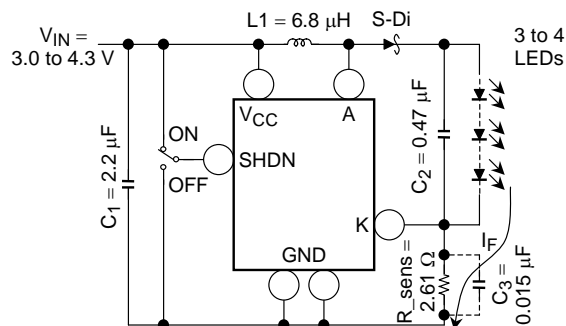


Application Evaluation Circuit Example 1

(Example of evaluation result using a small coil: Coil LDR304612T-6R8)

6.8 μH is optimum for illuminating serial LEDs 3 to 4 LEDs using $I_F = 20\text{ mA}$.

4.7 μH is recommended for steady illumination of serial LED 2 in the range $V_{IN} > 4.5\text{ V}$.



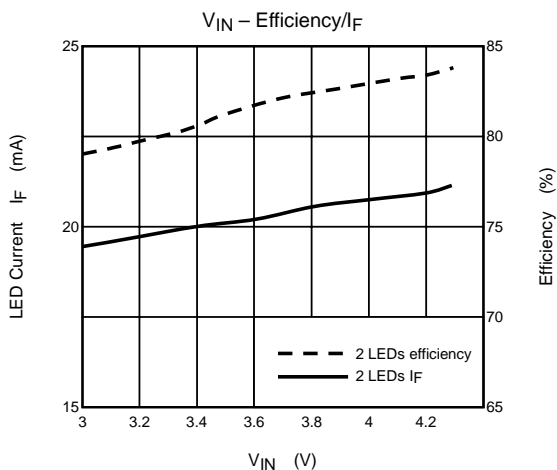
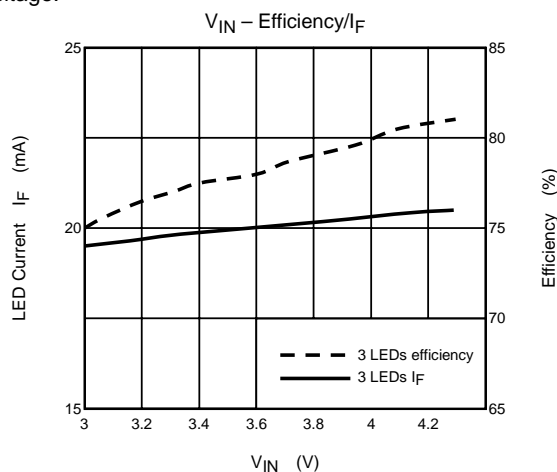
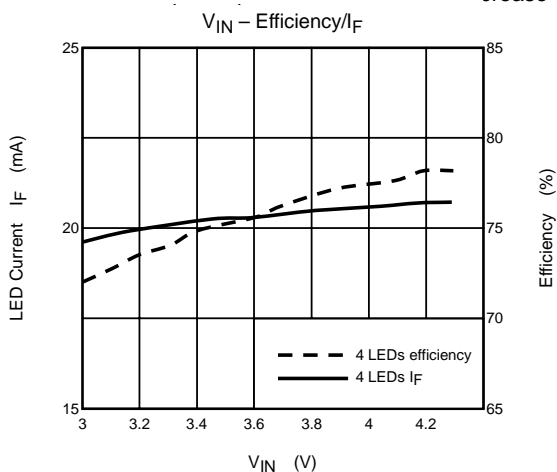
L1 : TDK LDR304612T-6R8

S-Di: TOSHIBA CUS02 30 V/1 A

LED: NICHIA NSCW215T

Note 5: Connection of C_3 is not necessary in every case.

The I_F is expected to stabilize on the decrease of voltage.



<Measurement>

Efficiency in the range $V_{IN} = 3.0\text{ to }4.3\text{ V}$

Number of LED	Efficiency (%)	Average Efficiency (%)
2	79.0 to 83.8	81.6
3	75.1 to 80.9	78.3
4	72.0 to 78.3	75.7

I_F in the range $V_{IN} = 3.0\text{ to }4.3\text{ V}$

Number of LED	I_F (mA)	V_{CC} Dependence (%)
2	19.5 to 21.1	7.8
3	19.5 to 20.5	4.9
4	19.6 to 20.7	5.3

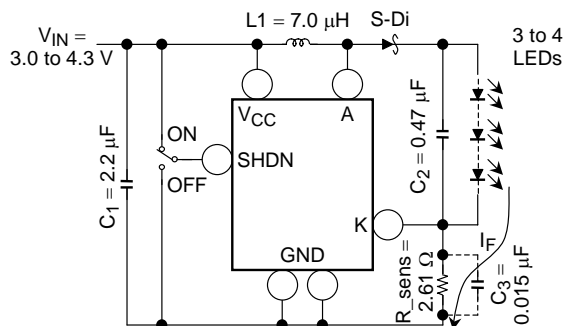
Note 6: The above values have been obtained through Toshiba's own measurements. However, results may vary according to the measurement environment.

Application Evaluation Circuit Example 2

(Example of evaluation result using a small coil: Coil CXML321610-7R0)

6.8 μH is optimum for illumination of serial LEDs 4 to 3 using $I_F = 20 \text{ mA}$.

4.7 μH is recommended for steady illumination of serial LED 2 in the range $V_{IN} > 4.5 \text{ V}$.

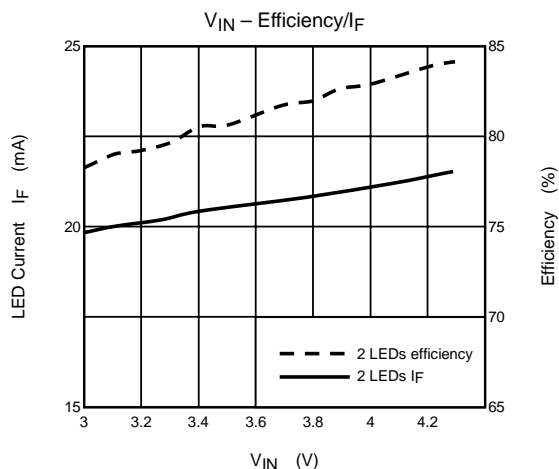
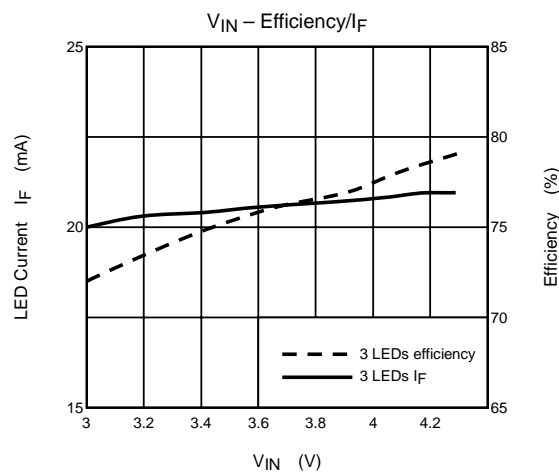
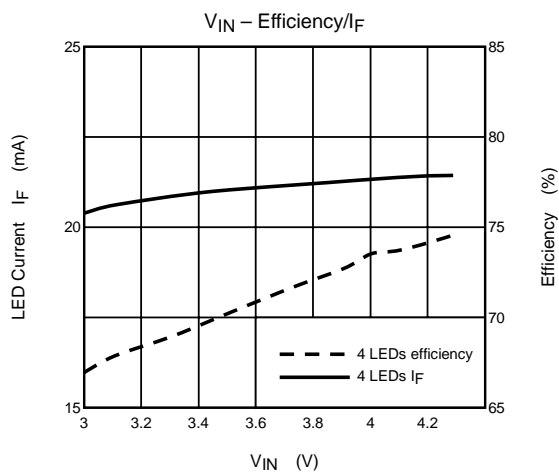


L1 : SUMITOMO CXML321610-7R0

S-Di: TOSHIBA CUS02 30 V/1 A

LED: NICHIA NSCW215T

Note 7: Connection of C_3 is not necessary in every case. .
The I_F is expected to stabilize on decrease of voltage. .



<Measurement>

Efficiency in the range $V_{IN} = 3.0 \text{ to } 4.3 \text{ V}$

Number of LED	Efficiency (%)	Average Efficiency (%)
2	78.2 to 84.1	81.3
3	72.0 to 79.1	75.8
4	66.9 to 71.1	74.6

I_F in the range $V_{IN} = 3.0 \text{ to } 4.3 \text{ V}$

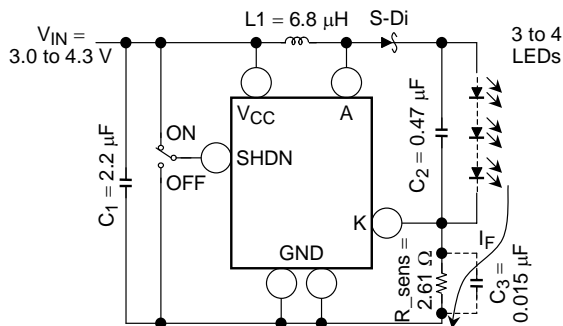
Number of LED	I_F (mA)	V_{CC} Dependence (%)
2	19.8 to 21.6	8.1
3	20.0 to 21.0	4.8
4	20.4 to 21.5	4.9

Note 8: The above values have been obtained through Toshiba's own measurements. However, results may vary according to the measurement environment.

Application Evaluation Circuit Example 3 (Example of evaluation result using a small coil: Coil 976AS-6R8)

6.8 μH is optimum for illumination of serial LEDs 4 to 3 using $I_F = 20 \text{ mA}$.

4.7 μH is recommended for steady illumination of serial LED 2 in the range $V_{IN} > 4.5 \text{ V}$.

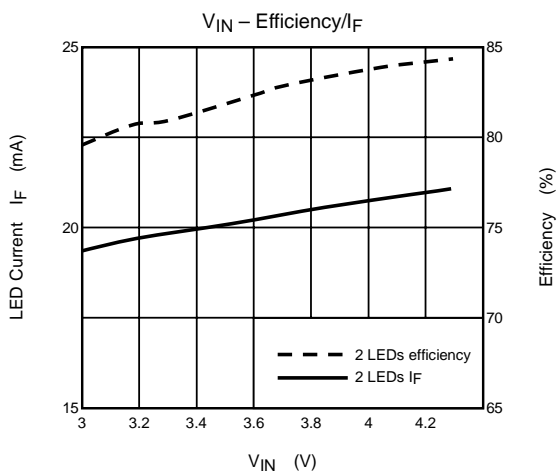
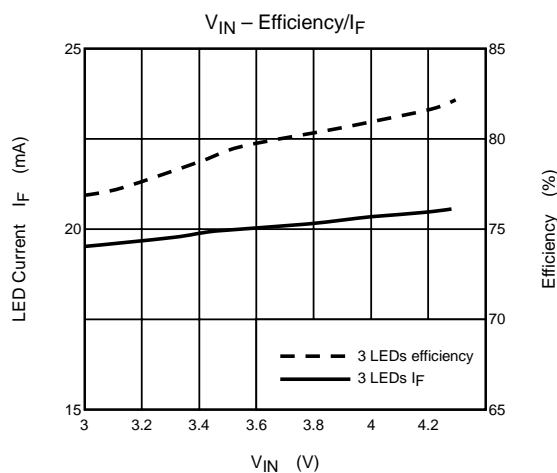
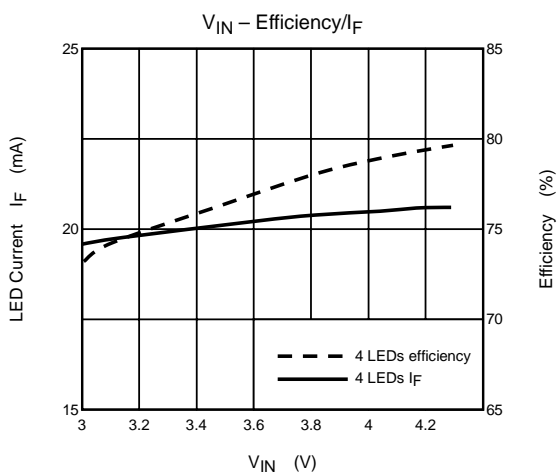


L1 : TOKO 976AS-6R8

S-Di: TOSHIBA CUS02 30 V/1 A

LED: NICHIA NSCW215T

Note 9: Connection of C_3 is not necessary in every case. .
The I_F is expected to stabilize on decrease of voltage. .



<Measurement>

Efficiency in the range $V_{IN} = 3.0$ to 4.3 V

Number of LED	Efficiency (%)	Average Efficiency (%)
2	79.7 to 84.4	82.3
3	76.7 to 82.1	79.5
4	73.1 to 79.7	74.0

I_F in the range $V_{IN} = 3.0$ to 4.3 V

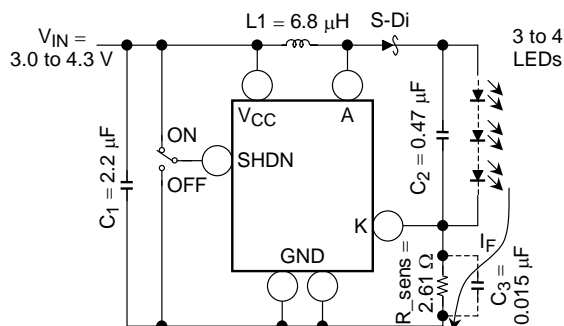
Number of LED	I_F (mA)	V_{CC} Dependence (%)
2	19.4 to 21.1	8.1
3	19.5 to 20.5	5.1
4	19.6 to 20.7	5.3

Note 10: The above values have been obtained through Toshiba's own measurements. However, results may vary according to the measurement environment.

Application Evaluation Circuit Example 4 (Example of evaluation result using a small coil: Coil CXLD140-6R8)

6.8 μH is optimum for illumination of serial LEDs 4 to 3 using $I_F = 20 \text{ mA}$.

4.7 μH is recommended for steady illumination of serial LED 2 in the range $V_{IN} > 4.5 \text{ V}$.

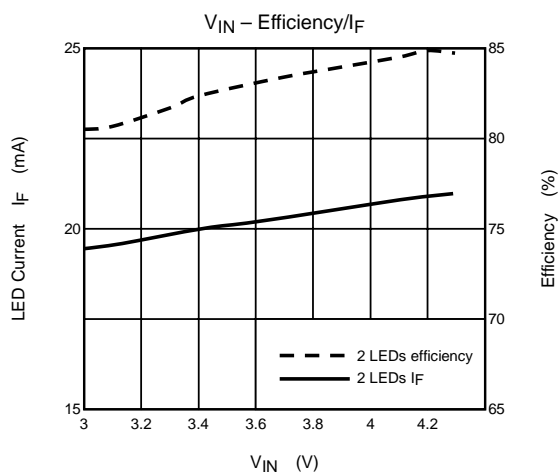
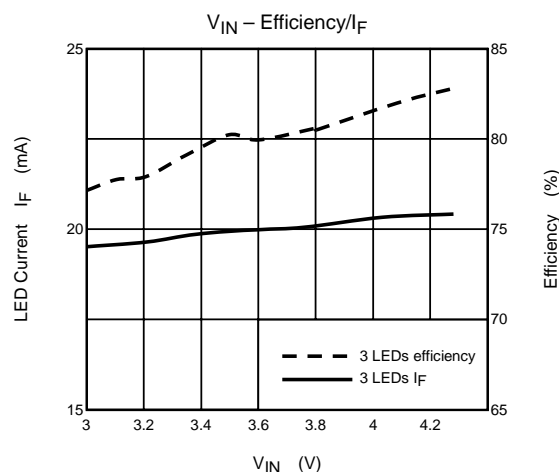
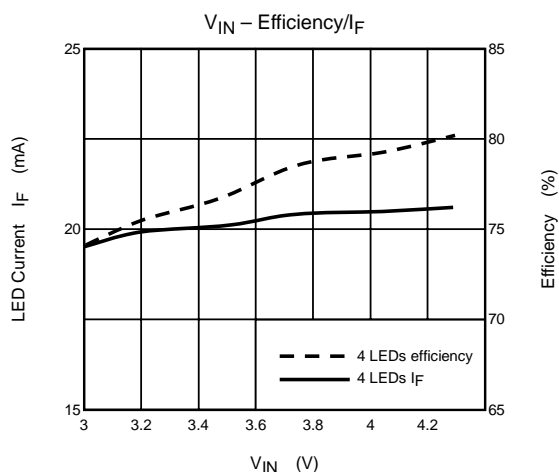


L1 : SUMITOMO CXLD140-6R8

S-Di: TOSHIBA CUS02 30 A/1 V

LED: NICHIA NSCW215T

Note11: Connection of C_3 is not necessary in every case. .
The I_F is expected to stabilize on decrease of voltage. .



<Measurement>

Efficiency in the range $V_{IN} = 3.0$ to 4.3 V

Number of LED	Efficiency (%)	Average Efficiency (%)
2	80.3 to 84.9	82.9
3	77.2 to 82.8	80.2
4	74.1 to 80.4	77.6

I_F in the range $V_{IN} = 3.0$ to 4.3 V

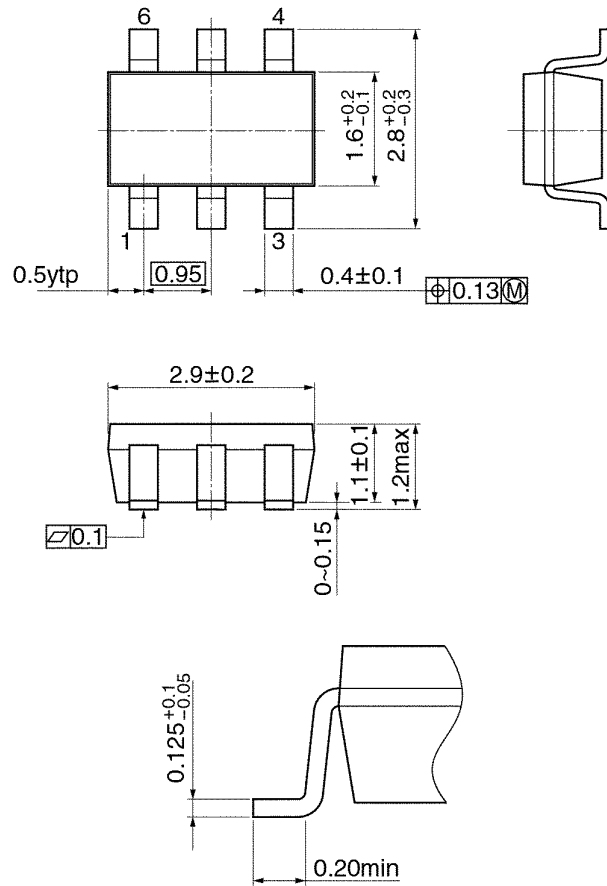
Number of LED	I_F (mA)	V_{CC} Dependence (%)
2	19.4 to 21.0	7.6
3	19.5 to 20.5	5.1
4	19.6 to 20.7	5.3

Note 12: The above values have been obtained through Toshiba's own measurements. However, results may vary according to the measurement environment.

Package Dimensions

SSOP6-P-0.95B

Unit: mm



Weight: 0.016 g (typ.)

About solderability, following conditions were confirmed

- Solderability

- (1) Use of Sn-63Pb solder Bath

- solder bath temperature = 230°C
 - dipping time = 5 seconds
 - the number of times = once
 - use of R-type flux

- (2) Use of Sn-3.0Ag-0.5Cu solder Bath

- solder bath temperature = 245°C
 - dipping time = 5 seconds
 - the number of times = once
 - use of R-type flux

RESTRICTIONS ON PRODUCT USE

030619EBA

- The information contained herein is subject to change without notice.
- The information contained herein is presented only as a guide for the applications of our products. No responsibility is assumed by TOSHIBA for any infringements of patents or other rights of the third parties which may result from its use. No license is granted by implication or otherwise under any patent or patent rights of TOSHIBA or others.
- TOSHIBA is continually working to improve the quality and reliability of its products. Nevertheless, semiconductor devices in general can malfunction or fail due to their inherent electrical sensitivity and vulnerability to physical stress. It is the responsibility of the buyer, when utilizing TOSHIBA products, to comply with the standards of safety in making a safe design for the entire system, and to avoid situations in which a malfunction or failure of such TOSHIBA products could cause loss of human life, bodily injury or damage to property.
In developing your designs, please ensure that TOSHIBA products are used within specified operating ranges as set forth in the most recent TOSHIBA products specifications. Also, please keep in mind the precautions and conditions set forth in the "Handling Guide for Semiconductor Devices," or "TOSHIBA Semiconductor Reliability Handbook" etc..
- The TOSHIBA products listed in this document are intended for usage in general electronics applications (computer, personal equipment, office equipment, measuring equipment, industrial robotics, domestic appliances, etc.). These TOSHIBA products are neither intended nor warranted for usage in equipment that requires extraordinarily high quality and/or reliability or a malfunction or failure of which may cause loss of human life or bodily injury ("Unintended Usage"). Unintended Usage include atomic energy control instruments, airplane or spaceship instruments, transportation instruments, traffic signal instruments, combustion control instruments, medical instruments, all types of safety devices, etc.. Unintended Usage of TOSHIBA products listed in this document shall be made at the customer's own risk.
- The products described in this document are subject to the foreign exchange and foreign trade laws.
- TOSHIBA products should not be embedded to the downstream products which are prohibited to be produced and sold, under any law and regulations.