

THIS DRAWING IS UNPUBLISHED.

RELEASED FOR PUBLICATION

-.-.

© COPYRIGHT - By -

ALL RIGHTS RESERVED.

## REVISIONS

P	LTR	DESCRIPTION	DATE	DWN	APVD
R5		REVISED PER ECR-17-018148	13DEC2017	SC	BH

△ 6 MATERIAL: PA66, UL94 V-0, GWIT 775°C

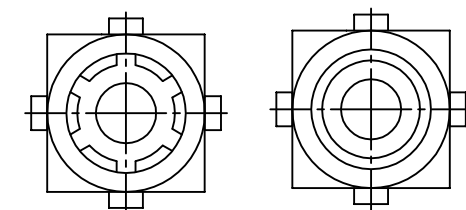
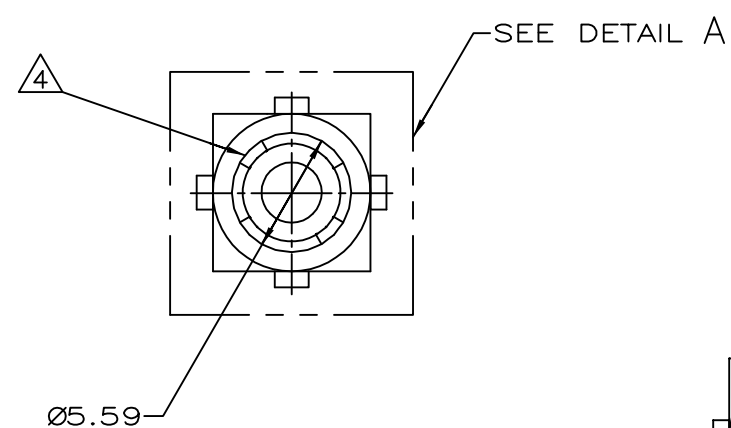
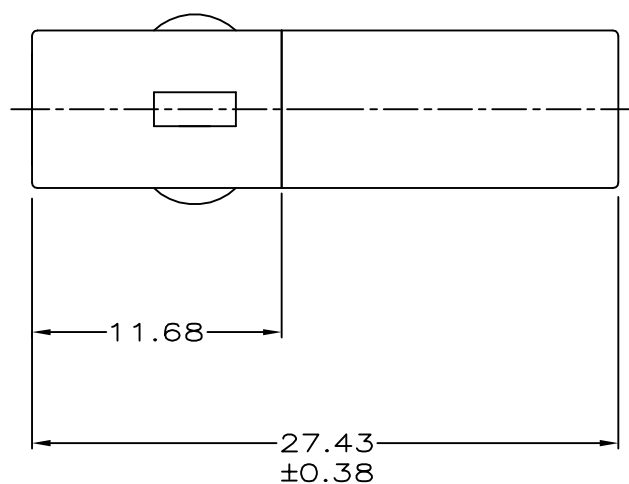
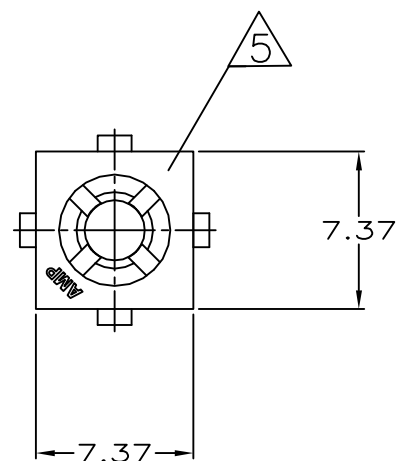
1. MATES WITH APPROPRIATE UNIVERSAL MATE-N-LOK™ CAP.

2. SMALL NICKS ARE PERMITTED ON THE CIRCUIT TOWER WHICH COULD INCREASE THE INITIAL HOUSING MATING FORCE BY UP TO 2.2 NEWTONS [.5 LBS].

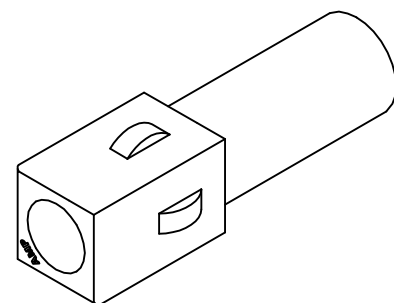
3. DIMENSIONS SHOWN REPRESENT PRODUCT IN DRY, AS MOLDED, CONDITION. ADDITIONAL 2% GROWTH DUE TO SUBSEQUENT MOISTURE ABSORPTION MAY OCCUR AND SHOULD BE ACCOUNTED FOR.

△ 4 FOUR RIBS EQUALLY SPACED, NO SPECIFIC ORIENTATION. NO RIBS OR SIX RIBS EQUALLY SPACED, NO SPECIFIC ORIENTATION, OPTIONAL.

△ 5 CSA LOGO LOCATED APPROXIMATELY AS SHOWN.



DETAIL A  
OPTIONAL CONSTRUCTION



3-DIMENSIONAL MODEL  
NTS

27.43	1.080
11.68	.460
7.37	.290
5.59	.220
0.38	.015
0.13	.005
MM	IN
CONVERSION TABLE	

△ 6	NATURAL	1-350865-1
	NATURAL	350865-1
	COLOR	PART NO

THIS DRAWING IS A CONTROLLED DOCUMENT.		DWN K. WHITAKER 3-9-92	TE Connectivity	
DIMENSIONS: mm[INCHES]		CHK R. SWING 3-9-92		
		APVD D. SELF 3-10-92	NAME PLUG, SINGLE CIRCUIT, UNIVERSAL MATE-N-LOK™	
		PRODUCT SPEC		
TOLERANCES UNLESS OTHERWISE SPECIFIED:		APPLICATION SPEC	SIZE A2	
0 PLC ± -		—		
1 PLC ± -		—	CAGE CODE 00779	
2 PLC ± 0.13		—		
3 PLC ± -		—	DRAWING NO C=350865	
4 PLC ± -		—		
ANGLES ± 0°30'		—	RESTRICTED TO —	
FINISH		—		
MATERIAL NYLON,UL 94V-0		WEIGHT	SCALE 4:1	
—		—		
CUSTOMER DRAWING			SHEET 1 of 1	
			REV R5	