



FCIconnect.com

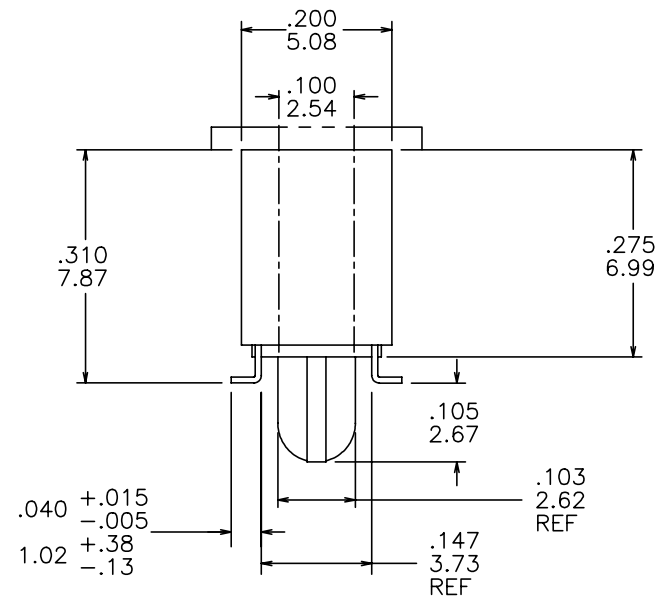
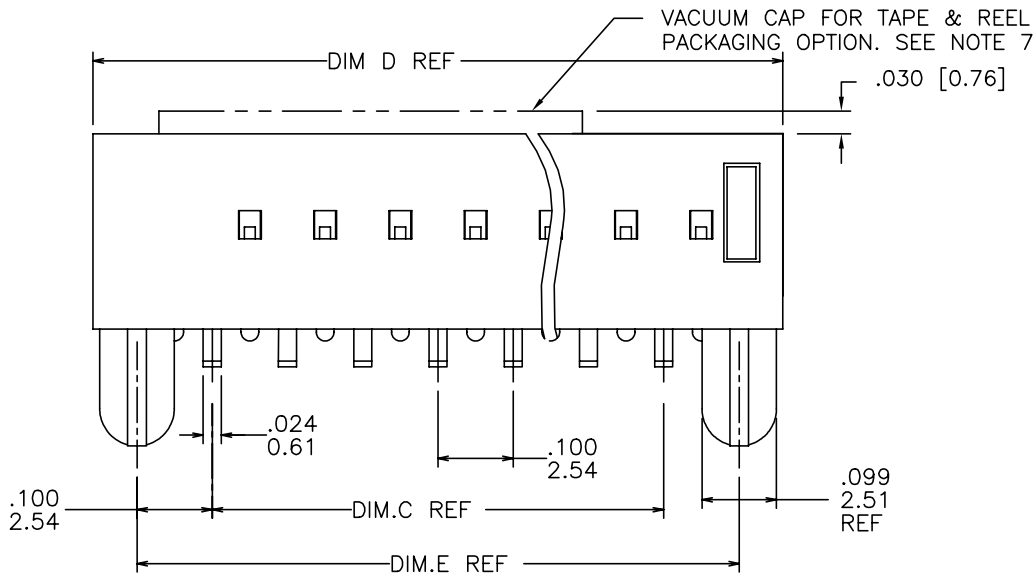
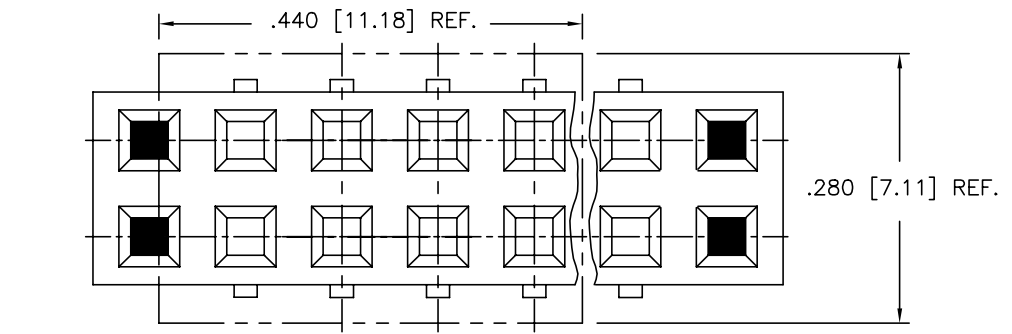
Copyright FCI

PRODUCT NO.

SEE TABLE

69154 - XXX LF

- LEAD FREE OPTION
- PACKAGING OPTION NOTE 10, OMIT IF NOT REQUIRED.
- NO. OF POSITIONS PER ROW
- PLATING CODE
- BASE PART NUMBER



mat'l. code		surface		tolerance		projection		product family	
NOTES 1,3,10 & 14		ISO 1302		ISO 406		ISO 1101		DUBOX	
l	tr	ec	n	dr	date	tolerances unless otherwise specified		title	
M	ELX-N-14890	ZK	06/03/13			angles	linear	SMT DOUBLE ROW VCC ASSEMBLY	
P	V03-0310	HTB	05/02/03	0'±2'				dwg no 69154	
R	V03-1246	PJ	12/04/03	dr	J. SHREINER	12/31/90		sheet 1 of 6	
S	V05-0463	DPU	06/27/05	engr	M. HAHN	12/31/90		size A3	
T	M07-0143	ERE	03/03/07	chr	M. HAHN	12/31/90			
U	M07-0203	AGS	05/02/07	appd	M. HAHN	12/31/90			
sheet		revision		V	V	V	V	type Product Customer Drawing	
index		sheet		1	2	3	4		

PRODUCT NUMBER  
SEE TABLE

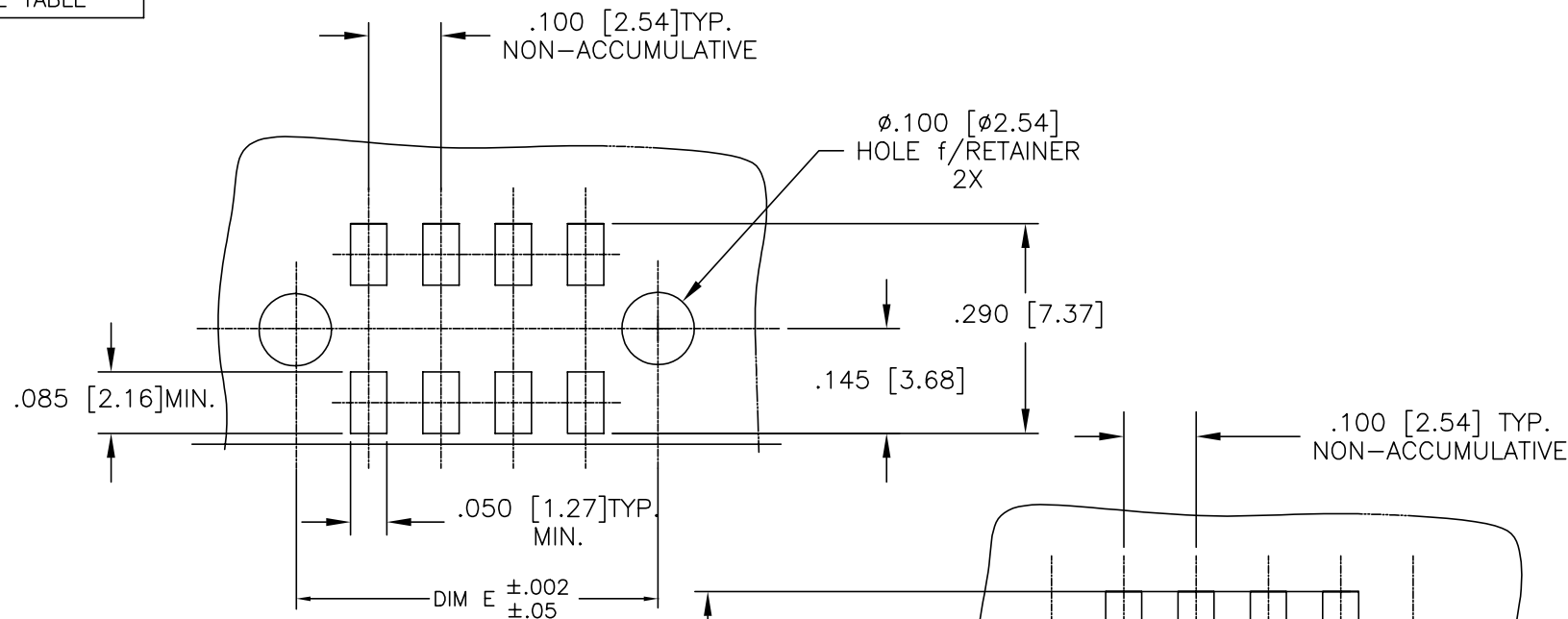


FIGURE A  
TOP ENTRY  
.025/.64 SQUARE PIN

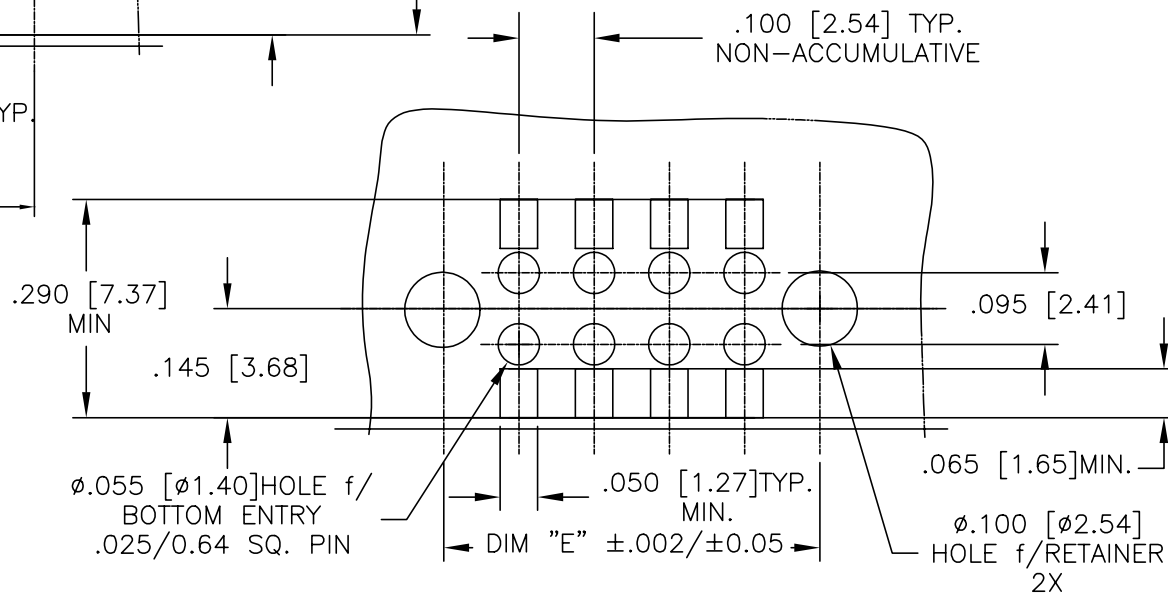


FIGURE B  
BOTTOM ENTRY (THROUGH PWB)  
.025/.64 SQUARE PIN

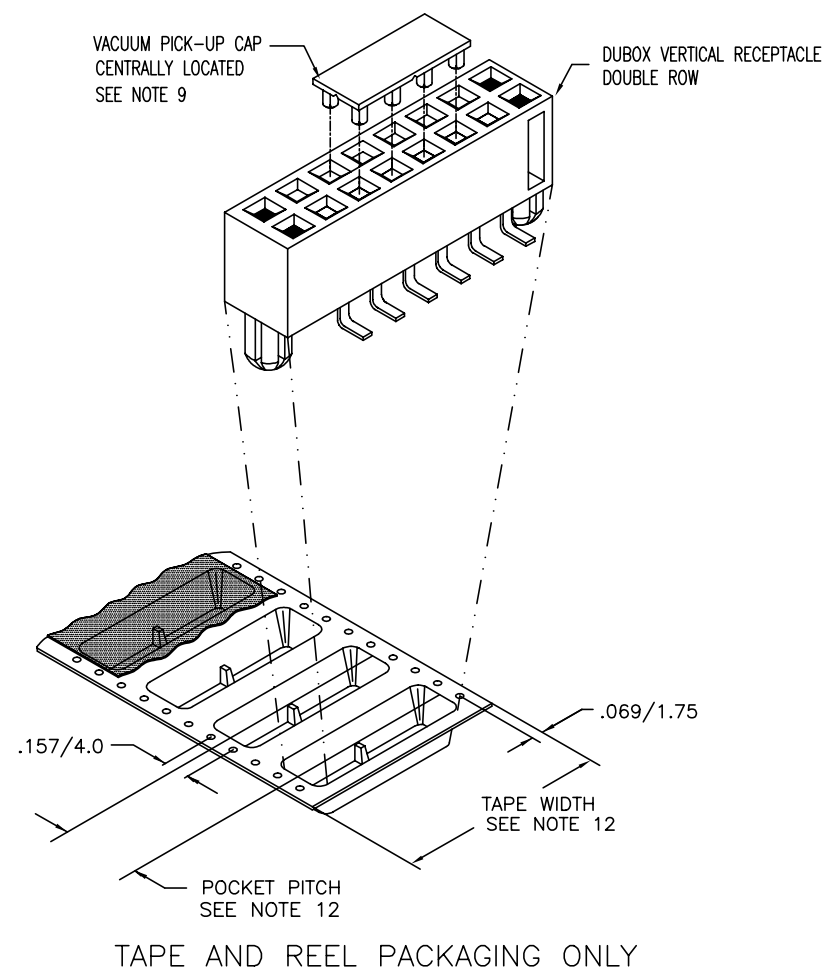
mat'l. code			surface ISO 1302 ✓	tolerance ISO 406 ISO 1101	projection ISO 1101	product family DUBOX		
l	tr	ec	n	d	r	title		
v						SMT DOUBLE ROW VCC ASSEMBLY		
						dwg no 69154		
						type Product Customer Drawing		
sheet index	revision sheet							



FCIconnect.com

Copyright FCI

PRODUCT NO.  
SEE TABLE



mat'l. code				surface		tolerance		projection		product family					
				ISO 1302 ✓		ISO 406 ISO 1101				DUBOX					
ltr ecn nodr date				tolerances unless otherwise specified						title					
V				angles		.XK±.01/.X±.3		INCH/MM		SMT DOUBLE ROW					
				linea		.XXX±0.005/.XX±.13				VCC ASSEMBLY					
				0°±2'		.XXXK±.0020/.XXX±.051		scale 1:1							
				dr J. SHREINER		12/31/90				dwg no		sheet3 of 6		size	
				engr M. HAHN		12/31/90				69154		A3			
				chr M. HAHN		12/31/90									
				appd M. HAHN		12/31/90				type Product Customer Drawing					
sheet		revision													
Index		sheet													

PRODUCT NO NOTE 13	PLATING CONTACT AREA	PLATING SOLDER TAIL	MATERIAL REF
69154-2XX	15u"/.38u Au MIN OVER 50u"/1.27u Ni MIN SEE NOTE 16	100u"/160u" SN 2.54u/4.06u	NOTE 3 & 4
69154-3XX	30u"/.76u Au MIN OVER 50u"/1.27u Ni MIN SEE NOTE 16	100u"/160u" SN 2.54u/4.06u	NOTE 3 & 4
69154-6XX	30u"/.76u Au MIN OVER 50u"/1.27u Ni MIN SEE NOTE 16	100u"/160u" SN 2.54u/4.06u	NOTE 3 & 4
69154-8XX	30u"/.76u Au MIN OVER 50u"/1.27u Ni MIN	100u"/160u" SN 2.54u/4.06u	NOTE 3 & 4

OBsolete

NOTES:

1. MATERIAL TERMINAL: PHOSPHOR BRONZE,

2. RECOMMENDED APPLICATION DATA:

A. RECOMMENDED SOLDER PAD PATTERN IS SHOWN IN FIGURE A & B.

B. ALL MATING PINS TO BE .025/.64. SQUARE ON TRUE CENTER OF GIVEN TERMINAL SPACING WITHIN .015/.38. DIA.

C. SUGGESTED MATING PIN LENGTH .210 ±.020/5.33 ±.51.

3. MATERIAL HOUSING: P.P.S. FILLED,COLOR BLACK FLAME RETARDANT PER UL 94V-0. COMPATIBLE WITH INFRA-RED SOLDERING. THIS PART WILL WITHSTAND EXPOSURES TO 260°C PEAK TEMPERATURE FOR 20 SECONDS IN WAVE SOLDER, INFRA-RED OR VAPOR PHASE SOLDER PROCESS.

4. PRESTAMPED POST PLATED TERMINALS.

5. FCI, FCI FINAL PART NUMBER AND DATE CODE TO BE MARKED ON TUBE LABEL.

6. STANDARD PACKAGING PER BUS-14-097.

7. TAPE AND REEL PACKAGING PER GES-14-334.

8. CARRIER TAPE WIDTH 24 MIN. & BELOW TO HAVE PILOT HOLES ON ONE SIDE OF TAPE ONLY. SIZES ABOVE 24mm TO HAVE PILOT HOLES ON BOTH SIDES OF TAPE.
9. VACUUM CAP MATERIAL FOR TAPE & REEL PACKAGING: L.C.P., FLAME RETARDANT PER UL 94V-0. COLOR: BLACK

10. ADD SUFFIX "P" TO PART DASH NUMBER FOR TAPE AND REEL PACKAGING. EXAMPLE: 69154-XXXP

11. MAXIMUM LENGTH OF CONNECTOR FOR TAPE AND REEL PACKAGING IS 2.50 INCHES LONG/63.5 MM.

12. TAPE & REEL PACKAGING 72mm WIDE TAPE WITH 16mm POCKET PITCH.

13. ADD LF SUFFIX AT THE END OF PART NUMBER FOR LEAD FREE OPTION.

14. THESE PRODUCTS MEETS EUROPEAN UNION DIRECTIVES AND OTHER COUNTRY REGULATION AS DESCRIBED IN GS-22-008.

15. "THIS PRODUCT HAS 100% TIN PLATING IN THE INTERFACE AND HAS NOT BEEN TESTED FOR WHISKER GROWTH IN ALL INTERCONNECT ENVIRONMENTS."

16. PLATING OPTIONS: MAY BE EITHER GOLD OR GXT PLATED AT MANUFACTURER'S OPTION.

mat'l. code		surface / tolerance ISO 1302 ✓ ISO 406 ISO 1101		projection INCH/MM		product family DUBOX	
l t r e c n n o d r		date		tolerances unless otherwise specified		title	
v				angles linea 0°±2°		SMT DOUBLE ROW VCC ASSEMBLY	
				J00±.01/J±.3 J00±.0.005/J00±.13 J000±.0020/J00±.051		scale 1:1	
				dr J. SHREINER 12/31/90		dwg no sheet4 of 6 size	
				engr M. HAHN 12/31/90		69154 A3	
				chr M. HAHN 12/31/90			
				appd M. HAHN 12/31/90		type Product Customer Drawing	
sheet		revision					
index		sheet					



Copyright FCI

B

C

D

FCIconnect.com

PRODUCT NO	NO OF POS	DIM C	DIM D	DIM E	TAPE & REEL PACKAGING	LF OPTION
69154-Y02	2 X 2	.100/2.54	.417/10.59	.300/7.62	NO	NOTE 13
69154-Y03	2 X 3	.200/5.08	.517/13.13	.400/10.16	NO	
69154-Y04	2 X 4	.300/7.62	.617/15.67	.500/12.70	NO	
69154-Y05	2 X 5	.400/10.16	.717/18.21	.600/15.24	NO	
69154-Y06	2 X 6	.500/12.70	.817/20.75	.700/17.78	NO	
69154-Y07	2 X 7	.600/15.24	.917/23.29	.800/20.32	NO	
69154-Y08	2 X 8	.700/17.78	1.017/25.83	.900/22.86	NO	
69154-Y09	2 X 9	.800/20.32	1.117/28.37	1.000/25.40	NO	
69154-Y10	2 X 10	.900/22.86	1.217/30.91	1.100/27.94	NO	
69154-Y11	2 X 11	1.000/25.40	1.317/33.45	1.200/30.48	NO	
69154-Y12	2 X 12	1.100/27.94	1.417/35.99	1.300/33.02	NO	
69154-Y13	2 X 13	1.200/30.48	1.517/38.53	1.400/35.56	NO	
69154-Y14	2 X 14	1.300/33.02	1.617/41.07	1.500/38.10	NO	
69154-Y15	2 X 15	1.400/35.56	1.717/43.61	1.600/40.64	NO	
69154-Y16	2 X 16	1.500/38.10	1.817/46.15	1.700/43.18	NO	
69154-Y17	2 X 17	1.600/40.64	1.917/48.69	1.800/45.72	NO	
69154-Y18	2 X 18	1.700/43.18	2.017/51.23	1.900/48.26	NO	
69154-Y19	2 X 19	1.800/45.72	2.117/53.77	2.000/50.80	NO	
69154-Y20	2 X 20	1.900/48.26	2.217/56.31	2.100/53.34	NO	
69154-Y21	2 X 21	2.000/50.80	2.317/58.85	2.200/55.08	NO	
69154-Y22	2 X 22	2.100/53.34	2.417/61.39	2.300/58.42	NO	
69154-Y23	2 X 23	2.200/55.88	2.517/63.93	2.400/60.96	NO	
69154-Y24	2 X 24	2.300/58.42	2.617/66.47	2.500/63.50	NO	
69154-Y25	2 X 25	2.400/60.96	2.717/69.01	2.000/66.04	NO	

mat'l. code		surface ISO 1302 ✓		tolerance ISO 406 ISO 1101		projection 		product family DUBOX	
ltr ecn nodr date		tolerances unless otherwise specified		title					
U				angles	linear	INCH/MM		SMT DOUBLE ROW VCC ASSEMBLY	
				0°±2'		scale 1:1			
				dr	J. SHREINER	12/31/90	dwg no		sheet 5 of 6
				engr	M. HAHN	12/31/90	69154		A3
				chr	M. HAHN	12/31/90	type		Product Customer Drawing
				appd	M. HAHN	12/31/90			
sheet index	revision sheet								

( )

( )

( )

( )

A

B

C

D



FCIconnect.com

Copyright FCI

PRODUCT NO	NO OF POS	DIM C	DIM D	DIM E	TAPE & REEL PACKAGING	LF OPTION
69154-Y26	2 X 26	2.500/63.50	2.817/71.55	2.700/68.58	NO	NOTE 13
69154-Y27	2 X 27	2.600/66.04	2.917/74.09	2.800/71.12	NO	
69154-Y28	2 X 28	2.700/68.58	3.017/76.63	2.900/73.66	NO	
69154-Y29	2 X 29	2.800/71.12	3.117/79.17	3.000/76.20	NO	
69154-Y30	2 X 30	2.900/73.66	3.217/81.71	3.100/78.74	NO	
69154-Y31	2 X 31	3.000/76.20	3.317/84.25	3.200/81.28	NO	
69154-Y32	2 X 32	3.100/78.74	3.417/86.79	3.300/83.32	NO	
69154-Y33	2 X 33	3.200/81.28	3.517/89.33	3.400/86.36	NO	
69154-Y34	2 X 34	3.300/83.32	3.617/91.87	3.500/88.90	NO	
69154-Y35	2 X 35	3.400/86.36	3.717/94.41	3.600/91.44	NO	
69154-Y36	2 X 36	3.500/88.90	3.817/96.95	3.700/93.98	NO	
69154-Y37	2 X 37	3.600/91.44	3.917/99.49	3.800/96.52	NO	
69154-Y38	2 X 38	3.700/93.98	4.017/102.03	3.900/99.06	NO	
69154-Y39	2 X 39	3.800/96.52	4.117/104.57	4.000/101.60	NO	
69154-Y40	2 X 40	3.900/99.06	4.217/107.11	4.100/104.14	NO	
69154-Y41	2 X 41	4.000/101.60	4.317/109.65	4.200/106.68	NO	
69154-Y42	2 X 42	4.100/104.14	4.417/112.19	4.300/109.22	NO	
69154-Y43	2 X 43	4.200/106.68	4.517/114.73	4.400/111.76	NO	
69154-Y44	2 X 44	4.300/109.22	4.617/117.27	4.500/114.30	NO	
69154-Y45	2 X 45	4.400/111.76	4.717/119.81	4.600/116.84	NO	
69154-Y46	2 X 46	4.500/114.30	4.817/122.35	4.700/119.38	NO	
69154-Y47	2 X 47	4.600/116.84	4.917/124.89	4.800/121.92	NO	
69154-Y48	2 X 48	4.700/119.38	5.017/127.43	4.900/124.46	NO	
69154-Y49	2 X 49	4.800/121.92	5.117/129.97	5.000/127.00	NO	
69154-Y50	2 X 50	4.900/124.46	5.217/132.51	5.100/129.54	NO	
69154-Y16P	2 X 16	1.500/38.10	1.817/46.15	1.700/43.18	YES - NOTE 10 & 12	

mat'l. code		surface ISO 1302 ✓		tolerance ISO 406 ISO 1101		projection 		product family DUBOX	
ltr ecn nodr date		tolerances unless otherwise specified		title					
V		angles		linea		INCH/MM		SMT DOUBLE ROW VCC ASSEMBLY	
		0°±2'				scale 1:1			
		dr J. SHREINER		12/31/90				dwg no sheet6 of 6 size	
		engr M. HAHN		12/31/90				69154 A3	
		chr M. HAHN		12/31/90					
		appd M. HAHN		12/31/90				type Product Customer Drawing	
sheet index		revision sheet							

A

B

C

D

# Mouser Electronics

Authorized Distributor

Click to View Pricing, Inventory, Delivery & Lifecycle Information:

FCI:

[69154-202LF](#)