

DATA SHEET

GLV9_C50501 Series

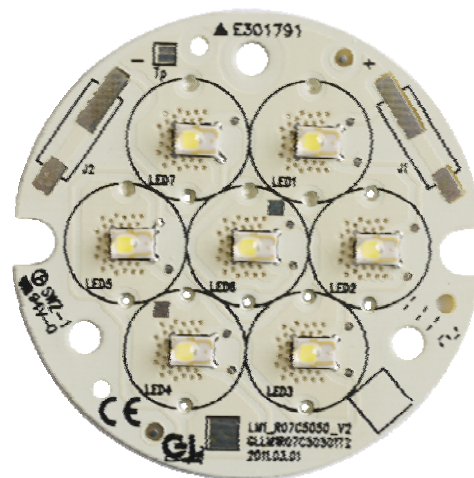
Part of the simpleLED® Program

simpleLED GLV9_C50501 SERIES

The light engine series consist of 7 high power LUXEON Rebel LEDs. It is engineered to provide customers with the flexibility to select the optimal light source for their applications. Customers also have the option of modifying their light engine by selecting their preferred LUXEON Rebel LED, optic and/or connector that best suits the application.

FEATURES & BENEFIT

- 3 year manufacture (GL-Lighting) warranty
- High-reliability LED sources
- Wide operational temperature range
- Multiple configurable options
- Multiple optic options
- Wide range of drive current
- Multiple CCT's available
- 7 LEDs in series
- Short lead time
- CE certified, UL recognized



GLV91C50501

TYPICAL APPLICATIONS

- Directional lighting
- Track lighting
- Accent lighting
- Display lighting
- Recessed down lighting



GLV92C50501

Note: All specifications are subject to change without notice.

simpleLED GLV9_C50501 WARM WHITE SERIES

PARAMETER		CONDITIONS
PCB		FR4 / MCPCB
Finish		White
Size		Dia 50mm
Source Type		LUXEON Rebel LXM8-PW30
Connector	00	Solder Pad
	20	20cm UL1007 20Awg
	CN	TYCO 2008563-1
Thermal Resistance (p-n junction to Tp)		Rth= 21 K/W (FR4) Rth= 14 K/W (MCPCB)
Rated Lumen Tp=25°C @350mA		>=560lm
CCT		3045k
CRI		Min. 80
Tp Maximum Temperature		80 °C

ELECTRICAL CHARACTERISTICS

PARAMETER	MIN	TYPICAL	MAX
Forward Voltage (V) @350mA & Tp=25°C	17.5	21	22.75
Power Consumption @350mA (W)	6.13	7.35	7.96
Efficacy (lm/Watt) @350mA, Tp=25°C	>=70	>=76	>=91

Driving Current	100mA	350mA	700mA
-----------------	-------	-------	-------

ENVIRONMENTAL CHARACTERISTICS

PARAMETER	MIN	MAX
Storage Temperature (°C)	-40	+85
Tp Temperature (°C)	-40	+80

Note: All specifications are subject to change without notice.

simpleLED GLV9_C50501 NEUTRAL WHITE SERIES

PARAMETER		CONDITIONS
PCB		FR4 / MCPCB
Finish		White
Size		Dia 50 mm
Source Type		LUXEON Rebel LXML-PWN2
Connector	00	Solder Pad
	20	20cm UL1007 20Awg
	CN	TYCO 2008563-1
Thermal Resistance (p-n junction to Tp)		Rth= 17 K/W (FR4) Rth= 10 K/W (MCPCB)
Rated Lumen Tp=25°C @700mA		>=1400lm
CCT		4100k
CRI		Min. 60
Tp Maximum Temperature		80 °C

ELECTRICAL CHARACTERISTICS

PARAMETER	MIN	TYPICAL	MAX
Forward Voltage (V) @700mA & Tp=25°C	17.5	21	24.5
Power Consumption @700mA (W)	12.25	14.7	17.15
Efficacy (lm/Watt) @700mA, Tp=25°C	>=81	>=95	>=114
Driving Current	100mA	700mA	1000mA

ENVIRONMENTAL CHARACTERISTICS

PARAMETER	MIN	MAX
Storage Temperature (°C)	-40	+85
Tp Temperature (°C)	-40	+80

Note: All specifications are subject to change without notice.

simpleLED GLV9_C50501 COOL WHITE SERIES

PARAMETER		CONDITIONS
PCB		FR4 / MCPCB
Finish		White
Size		Dia 50 mm
Source Type		LUXEON Rebel LXML-PWC2
Connector	00	Solder Pad
	20	20cm UL1007 20Awg
	CN	TYCO 2008563-1
Thermal Resistance (p-n junction to Tp)		Rth= 17 K/W (FR4) Rth= 10 K/W (MCPCB)
Rated Lumen Tp=25°C @700mA		>=1400lm
CCT		5650k
CRI		Min. 60
Tp Maximum Temperature		80 °C

ELECTRICAL CHARACTERISTICS

PARAMETER	MIN	TYPICAL	MAX
Forward Voltage (V) @700mA & Tp=25°C	17.5	21	24.5
Power Consumption @700mA (W)	12.25	14.7	17.15
Efficacy (lm/Watt) @700mA, Tp=25°C	>=81	>=95	>=114
Driving Current	100mA	700mA	1000mA

ENVIRONMENTAL CHARACTERISTICS

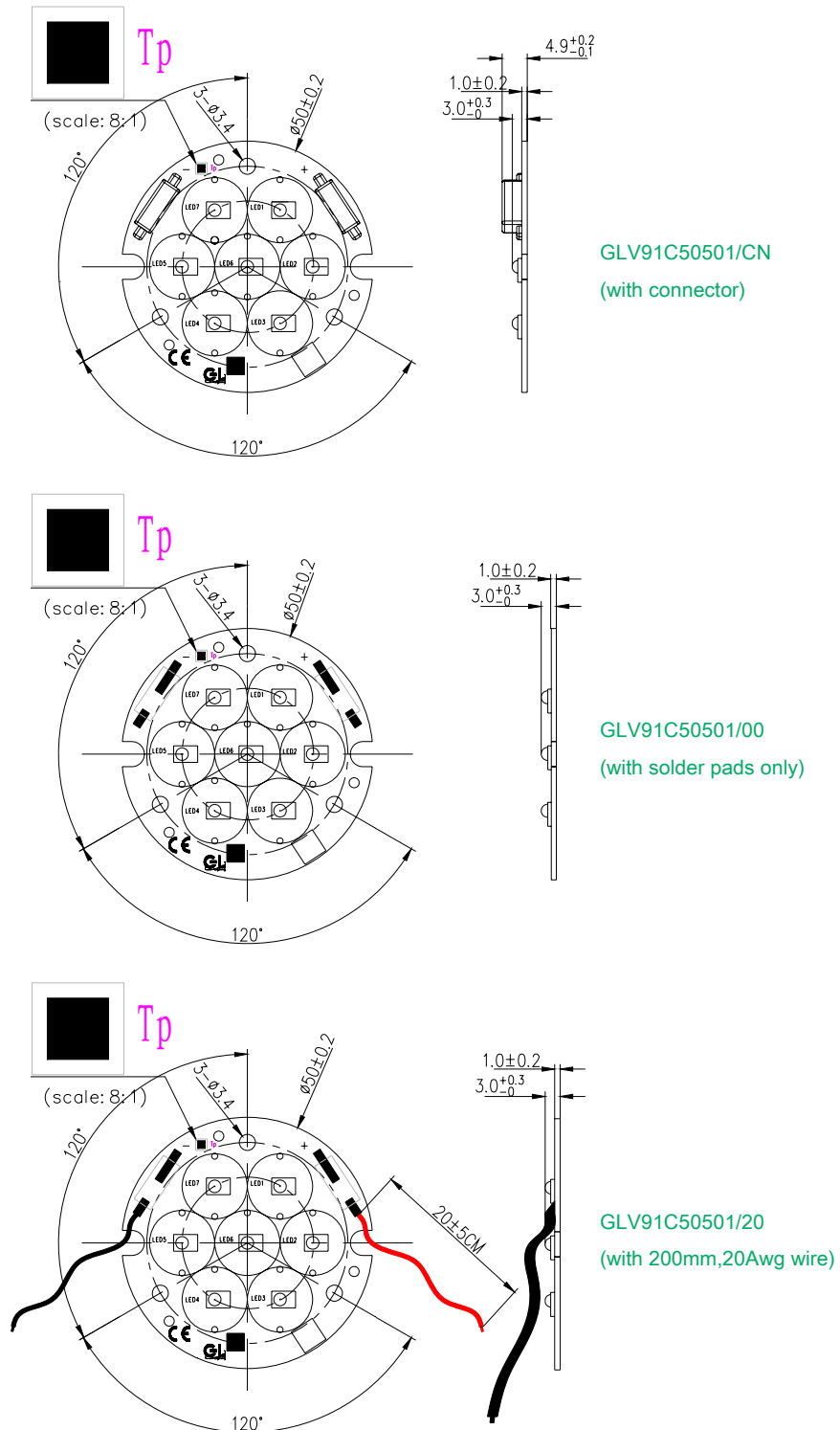
PARAMETER	MIN	MAX
Storage Temperature (°C)	-40	+85
Tp Temperature (°C)	-40	+80

Note: All specifications are subject to change without notice.

MECHANICAL DRAWINGS (GLV91C50501 / FR4)

2D drawing with dimensions:

(Unit: mm)

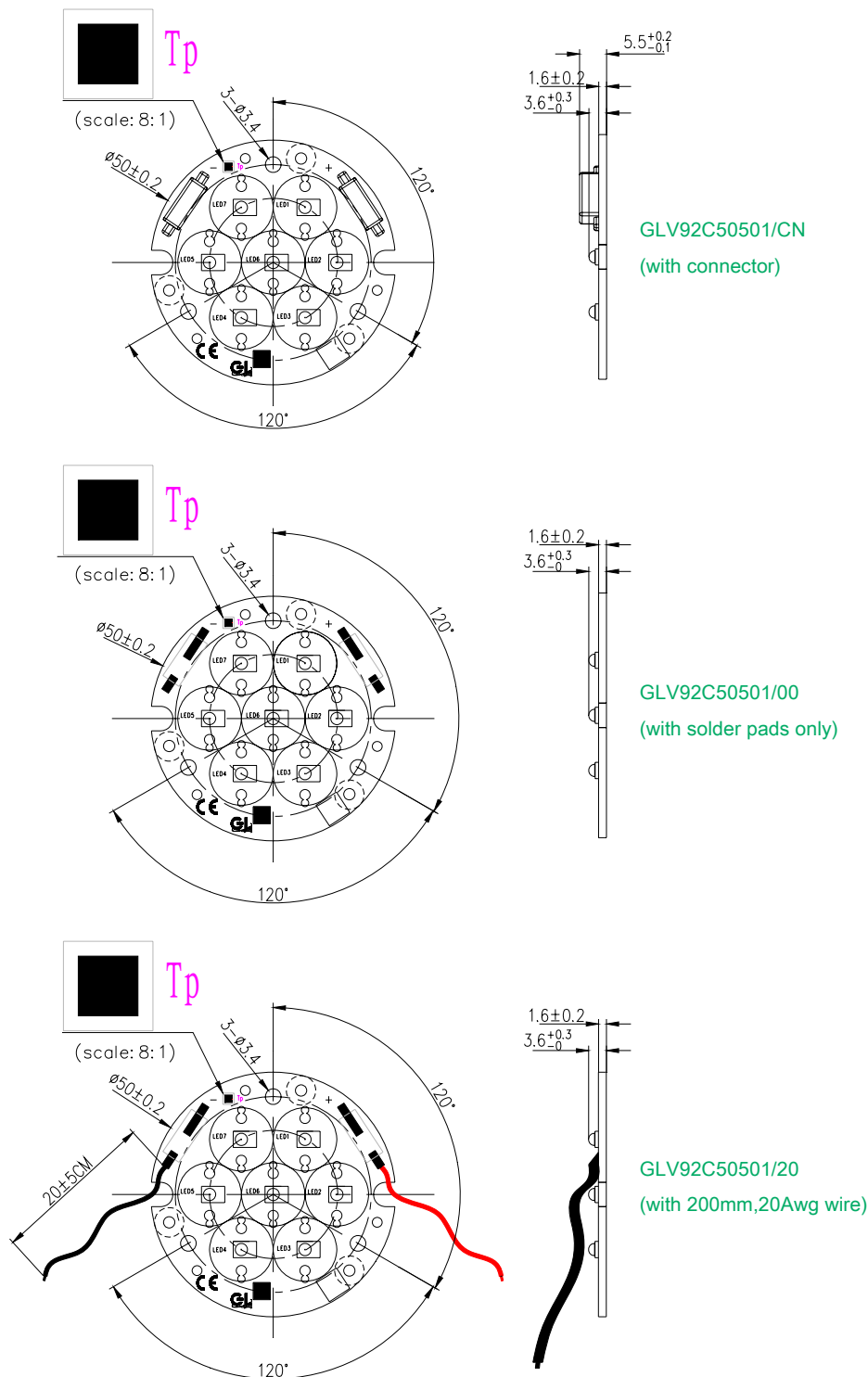


Note: All specifications are subject to change without notice.

MECHANICAL DRAWINGS(GLV92C50501 / MCPCB)

2D drawing with dimensions:

(Unit: mm)



Note: All specifications are subject to change without notice.

PART NUMBERING & ORDERING INFORMATION

1. PRODUCT SERIES

GLV91C50501

Circular FR4 with 7 LEDs in series

GLV92C50501

Circular MCPCB with 7 LEDs in series

2. CONNECTOR TYPE

00 – Solder Pad

20 – 20cm UL1007 20Awg

CN – TYCO 2008563-1

3. LED TYPE

LL - LXML LUXEON REBEL

LB - LXM8 LUXEON REBEL

LG - LXML LUXEON REBEL ES

4. NUMBER OF LED

07 - 7 LEDs

5. CCT

S30 – 3000K ANSI

D40 – 4000K

S40 – 4000K ANSI

W00 – 5600K

S50 – 5000K ANSI

6. FLUX BIN

L – Min 80lm@350mA

N – Min 100lm@350mA

R – Min 160 Lumens@700mA

S – Min 180 Lumens@700mA

T – Min 200 Lumens@700mA

7. OPTICS

OBS – 15/22 Degree, single lens

0BN – 27 Degree, single lens

0BF – 38/43 Degree, single lens

BWS – 15/22 Degree, multiple lens

BWN – 27 Degree, multiple lens

BWF – 38/43 Degree, multiple lens

Part Number :

GLV9*C50501 / AA – BB CC DDD E FFF

1 2 3 4 5 6 7

Note: All specifications are subject to change without notice.

ACCESSORIES FOR LENS

•Single Lens

No.	BRAND	MANUFACTURER PART #	SIZE	LUXEON REBEL	LUXEON REBEL ES	HOLDER
1	GL	GLVA1BS01Y	Ø13.5x7.3mm	15°	22°	Yes
2		GLVA1BN01Y	Ø13.5x7.3mm	27°	27°	Yes
3		GLVA1BF01Y	Ø13.5x7.3mm	38°	43°	Yes

•Multiple Lens

No.	BRAND	MANUFACTURER PART #	SIZE	LUXEON REBEL	LUXEON REBEL ES	HOLDER
1	GL	GLVA1BS07X50	Ø43x7.3mm	15°	22°	Yes
2		GLVA1BN07X50	Ø43x7.3mm	27°	27°	Yes
3		GLVA1BF07X50	Ø43x7.3mm	38°	43°	Yes

Part Number :

GLVA1 BS 07 X 50
 | | | | |
 1 2 3 4 5

1. ACCESSORIES CATEGORY NUMBER

GLVA1

Optics Number

3. LENS NUMBER

01 –Single Lens, With Holder

07 –7 Lens Assembly

2. OPTICS ANGLE

BS – 15/22 Degree Lens

BN – 27 Degree Lens

BF – 38/43 Degree Lens

4. RING / HOLDER

X – With Ring / Holder

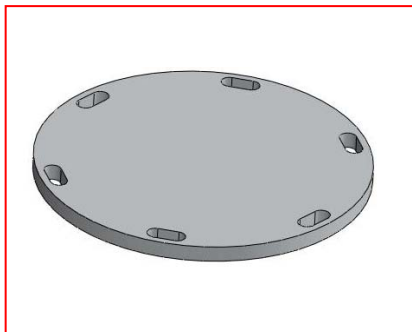
Y – With Holder Only

5. DIA. OF MULTIPLE LENS

50 – For 7 Lens Assembly

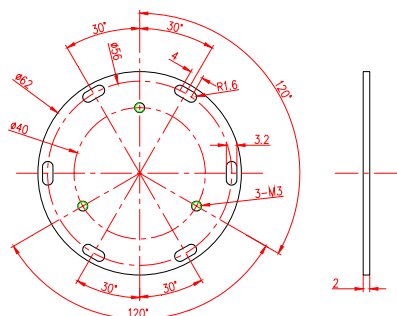
Note: All specifications are subject to change without notice.

ACCESSORY – HEAT SINK

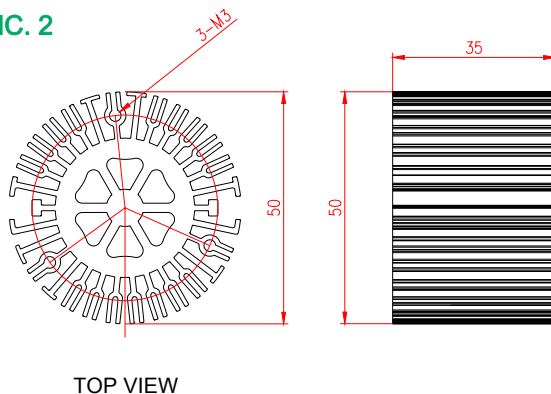


No.	BRAND	MANUFACTURER PART #	SIZE	MATERIAL	SURFACE TREATMENT	DRAWING NO.
1-1	GL	GLVA2C50501K02	Dia 62mm x Height 2mm	Aluminium	Black Coating	PIC.1
1-2		GLVA2C50501A02			Anodized	
2-1		GLVA2C50501K35	Dia 50mm x Height 35mm		Black Coating	PIC.2
2-2		GLVA2C50501A35			Anodized	
3-1		GLVA2C50501K50	Dia 50mm x Height 50mm		Black Coating	PIC.3
3-2		GLVA2C50501A50			Anodized	

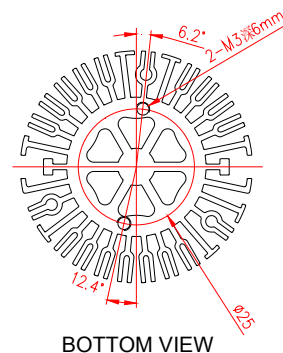
PIC. 1



PIC. 2

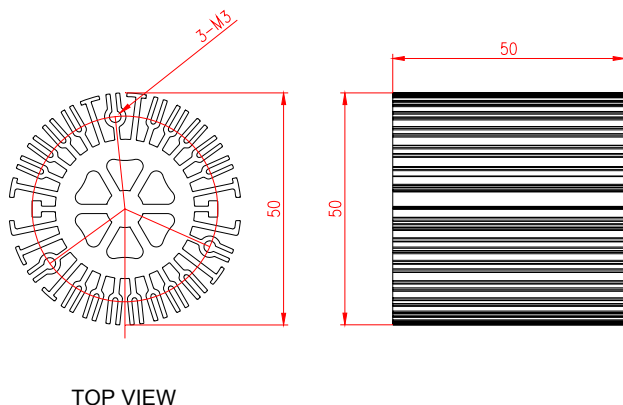


TOP VIEW

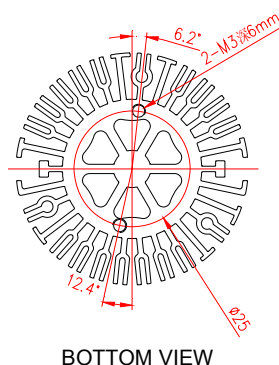


BOTTOM VIEW

PIC. 3



TOP VIEW



BOTTOM VIEW

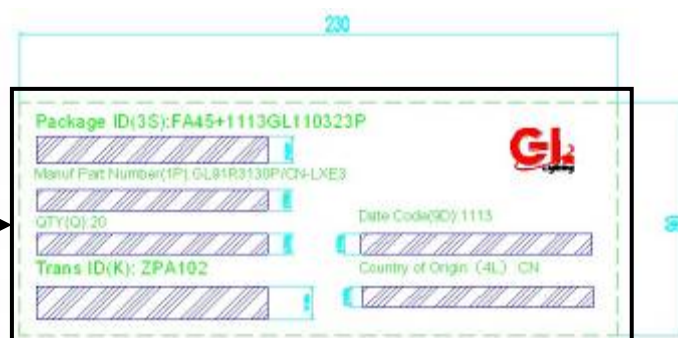
Note: All specifications are subject to change without notice.

PACKAGING INFORMATION

INNER PACKING	SIZE	TRAY	QTY
TYPE	345*295*11mm	1	20



INNER PACKING	SIZE	TRAY	QTY
TYPE 1	350*300*30mm	1	20
TYPE 2	350*300*250mm	18	360



Note: All specifications are subject to change without notice.

COMPANY INFORMATION

About Future Lighting Solutions

Future Lighting Solutions (www.futurelightingsolutions.com) is a leading provider of LED lighting components and support services for solid-state lighting products and installations, including engineering expertise, concept development, full system solutions and online tools that accelerate quality application development. The company is a division of Future Electronics.

About simpleLED®

Future Lighting Solutions simpleLED program has over 500 combinations of LUXEON® LED & Optic configurations, enabling you to select the right Light Engine for your application, eliminate prototyping delays and accelerating time to market. Additional benefits include UL recognized quality and a 3 year warranty. Visit our website and start innovating.

CONTACT DETAILS

In North America:

1-888-LUXEON2

Americas@futurelightingsolutions.com

In Europe:

00-800-44FUTURE

Europe@futurelightingsolutions.com

In Asia:

+800-LUMILEDS

Asia@futurelightingsolutions.com

In Japan:

+81-0120-667-013

Japan@futurelightingsolutions.com

Note: All specifications are subject to change without notice. Warranty provided by the manufacturer, GL-Lighting.