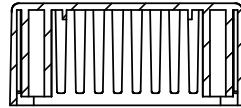


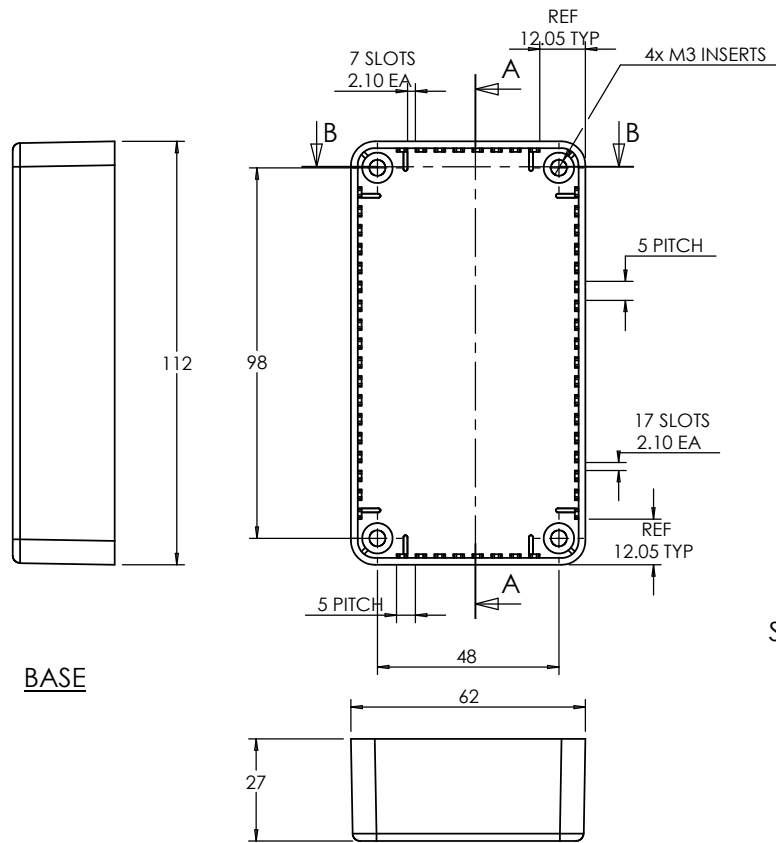
OVERALL ASSEMBLY DIMENSIONS:

EXTERNAL - 112 (131.5) x 62 x 31

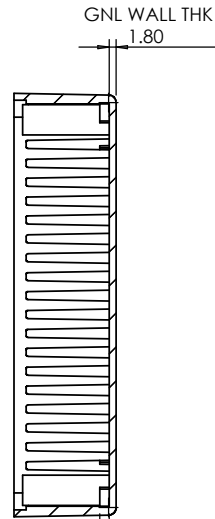
INTERNAL 108.4 x 58.4 x 27.4



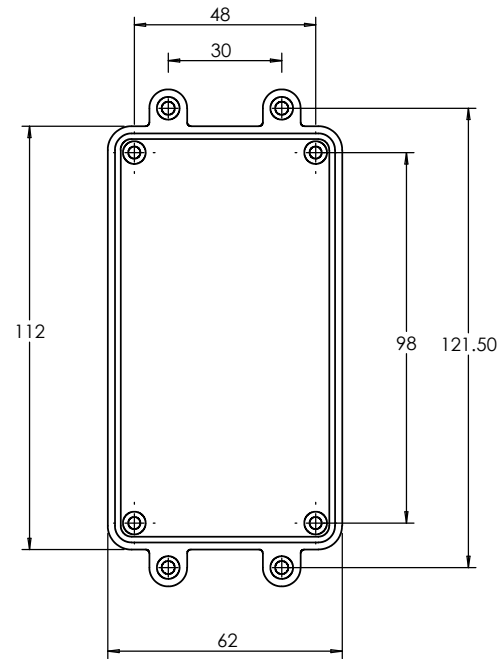
SECTION B-B



BASE



SECTION A-A

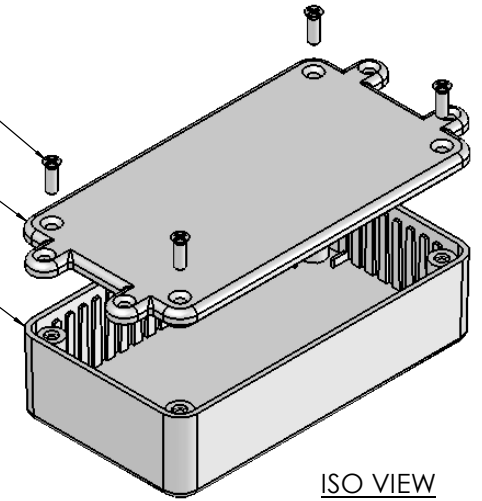


LID


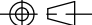
M3 CSK SCREW

LID

BASE



ISO VIEW

 <p>JAMES CARTER RD, MILDENHALL, SUFFOLK. IP28 7DE TEL: 01638 716101 FAX: 01638 716554 EMAIL: SALES@BOSS-ENCLOSURES.CO.UK WEB: www.BOSS-ENCLOSURES.CO.UK</p>				UNLESS OTHERWISE SPECIFIED: DIMENSIONS ARE IN MILLIMETERS		DO NOT SCALE DRAWING	REVISION. O
				FINISH: SMOOTH		TITLE: ASSEMBLY DRG FOR 2003,13-LUG	
DRAWN	NAME S.HARDINGE	SIGNED SJH	DATE 04/10/05	MATERIAL: ABS		DWG NO. 2003,13-LUG	A4
CHK'D	-	-	-	PROJECTION. 		SCALE. 1 : 2	SHEET 1 OF 1