

CXA-0488

Features

- 4 outputs
 - Applicable panel size*: 15 to 17 inches
 - With brightness control function (Pulse Width Modulation Dimming).
 - With shut down function.
 - With a sensing function for running out of lamp (alarm output).
 - In the high-voltage generator (a terminal and a pattern), an anti-dust measure by silicone application is taken.
- (Notice) Applicable panel size becomes a standard.

Applications



CXA-0488 Specifications (Please refer to each specification before use)

Electrical Characteristics

Item	Unit	Symbol	Specification			Condition					
			min	typ	max	Vin(V)	Vrmt(V)	Vbr(V)	Ta(°C)	RL1,2,3,4(kΩ)	Remarks
Output Current	mA	lout1,2,3,4 (Maximum dimmer)	6.2	6.9	7.6	12±1.2	5	0	-10 to +60	90	(*1)
		lout1,2,3,4 (Minimum dimmer)	2.8	3.8	4.8	12±1.2	5	2.5	-10 to +60	90	(*1)
Input Current	A	lin1	-	1.8	3.15	12±1.2	5	0	-10 to +60	90	Remote ON
	mA	lin2	-	-	1	12±1.2	0	0	-10 to +60	90	Remote OFF
Oscillatory Frequency	kHz	Freq1	40	45	50	12±1.2	5	0	-10 to +60	90	
	Hz	Freq2(Duty frequency)	120	140	160	12±1.2	5	2.5	-10 to +60	90	
Open Circuit Voltage	Vrms	Vopen	1800	1900	2200	10.8±0.05	5	0	-10 to +60	∞	Open load
Alarm Signal	V	Vst	4.5	5.1	5.5	12±1.2	5	0	-10 to +60	∞/90/90/90	In case of lamp anomaly (*2)
			4.5	5.1	5.5	12±1.2	5	0	-10 to +60	90/∞/90/90	In case of lamp anomaly (*2)
			4.5	5.1	5.5	12±1.2	5	0	-10 to +60	90/90/∞/90	In case of lamp anomaly (*2)
			4.5	5.1	5.5	12±1.2	5	0	-10 to +60	90/90/90/∞	In case of lamp anomaly (*2)
			-	0.1	0.5	12±1.2	5	0	-10 to +60	90	On a normal operation (*2)

(*1) Please refer to the connection diagram for details of a dimming method.

(*2) Please refer to the connection diagram for details of alarm output.

Other Specifications

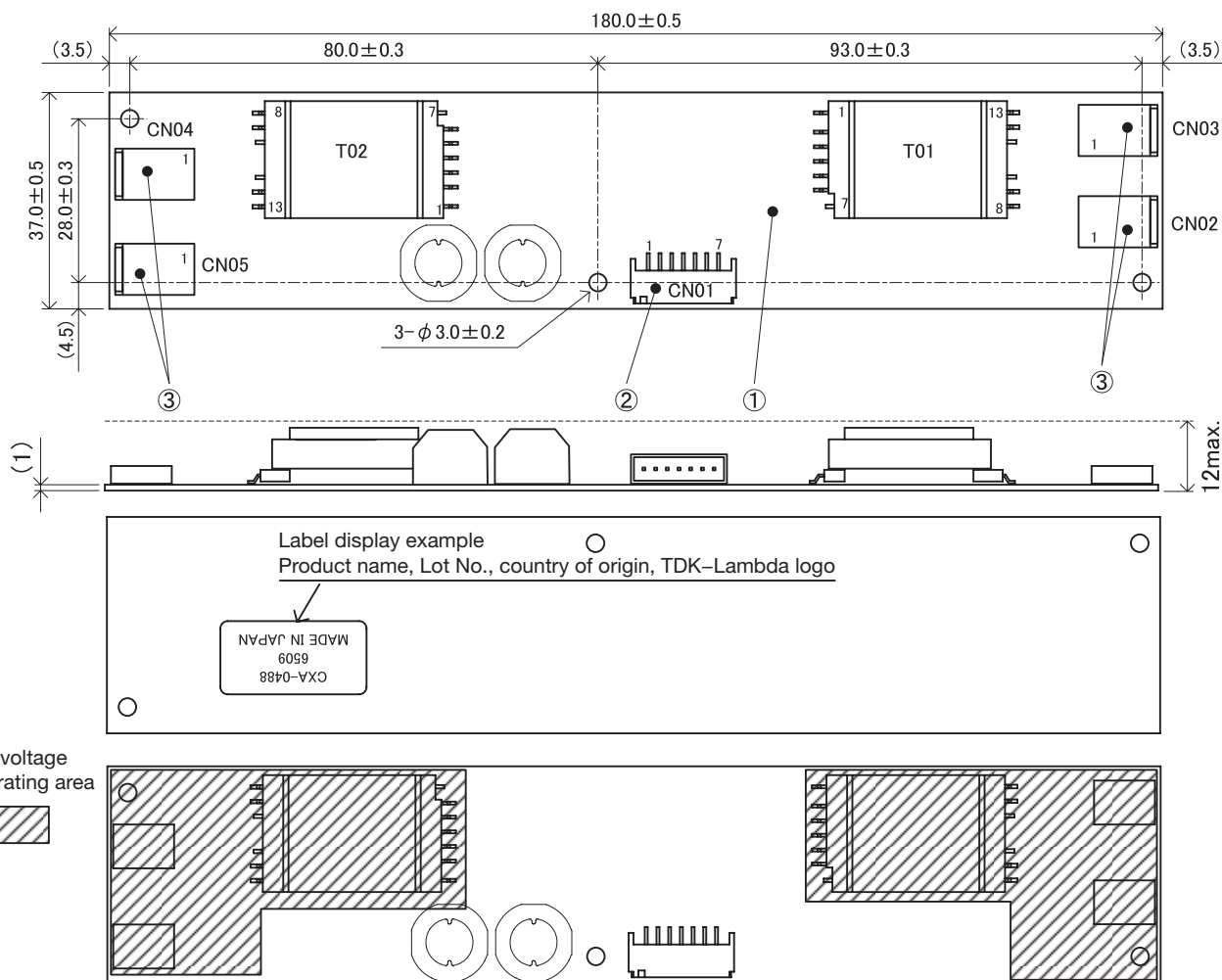
Dimming Function		Yes
Operating Temperature	°C	-10 to +60
Storage Temperature	°C	-30 to +85
Operating Humidity Ratio	RH%	95max.
Safety Standard		—
Weight	g	43typ.
Dimensions (WxDxH)	mm	180x37x12 (*3)
Fused Input		Yes
Remote ON / OFF		Yes
Alarm Signal Function		Yes
Shutdown Function		Yes
Silicone Coating on High Voltage Area		Yes

(*3) These dimensions are indicated the maximum only H. Others are typical values.

Conformity to RoHs Directive

This means that, in conformity with EU Directive 2002/95/EC, lead, cadmium, mercury, hexavalent chromium, and specific bromine-based flame retardants, PBB and PBDE, have not been used, except for exempted applications.

Outline Drawing



*From high-voltage generator, please secure space distance more than 3mm in top and bottom right and left.

Connector

Unit: mm

No.	Component name	Type name	Qty	Remarks	Recommended suitable connector
①	Printed circuit board PCB	Composite (CEM-3)	1	UL94V-0 t=1.0	-
②	Input connector CN1	S7B-PH-SM4-TB(LF)(SN)	1	J.S.T Mfg., Co., Ltd	PHR-7
③	Output connector CN02,03,04,05	SM02B-BHSS-1-TB(LF)(SN)	4	J.S.T Mfg., Co., Ltd	BHSR-02VS-1

Terminal Number & Function

Input side CN1

Terminal No.	Symbol	Rating	Remarks
CN1-1	Vin	12±1.2V	Power source input
CN1-2			
CN1-3	GND	0V	Ground
CN1-4			
CN1-5	Vbr	0 to 2.5V	Dimmer terminal
CN1-6	Vst(output)	0V/5V	Alarm output Lump open: 5V
CN1-7	Vrmt	0 to 0.4V/ 2.5V to Vin	0 to 0.4V : OFF Remote terminal 2.5V to Vin : ON

Output side CN2

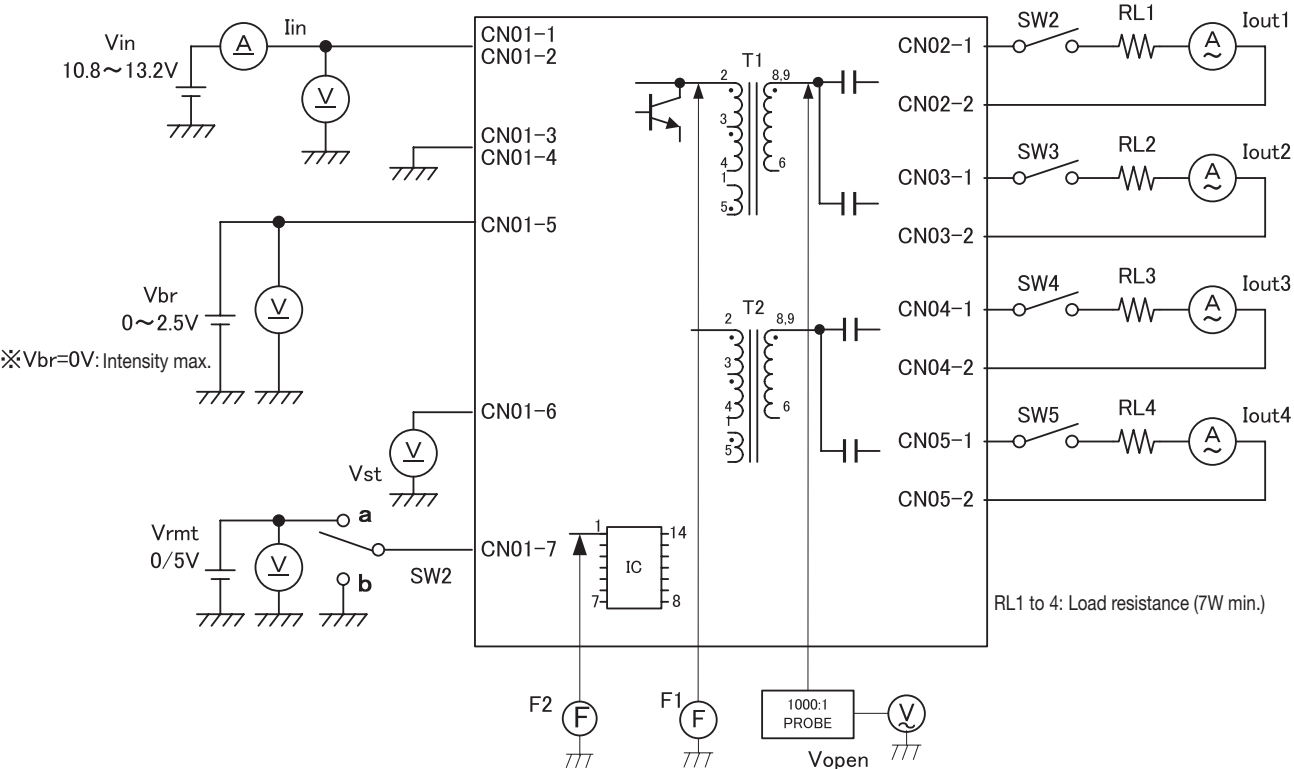
Terminal No.	Symbol	Rating	Remarks
CN02-1	V _{HIGH1}	710Vrms	Output 1
CN02-2	V _{LOW1}	(2V)	Output 1 return

Terminal No.	Symbol	Rating	Remarks
CN03-1	V _{HIGH2}	710Vrms	Output 2
CN03-2	V _{LOW2}	(2V)	Output 2 return

Terminal No.	Symbol	Rating	Remarks
CN04-1	V _{HIGH3}	710Vrms	Output 3
CN04-2	V _{LOW3}	(2V)	Output 3 return

Terminal No.	Symbol	Rating	Remarks
CN05-1	V _{HIGH4}	710Vrms	Output 4
CN05-2	V _{LOW4}	(2V)	Output 4 return

Connections



Operate as follows by switching a SW1.

SW1	Unit operates
a	Operates
b	Does not operate

Protection Circuit Operation

Load condition	Alarm output (CN01-6)*1	Shutdown function*2
When normal	0.5V max.	Does not shut down
When 1 load (lamp) is NG	4.75 to 5.25V	Shuts down
When 2 load (lamp) is NG	4.75 to 5.25V	Shuts down
When 3 load (lamp) is NG	4.75 to 5.25V	Shuts down
When 4 load (lamp) is NG	4.75 to 5.25V	Shuts down

*1 Warning output is a situation where 5V is output when one switch (SW2 to SW5) has become open.

*2 The inverter has built in protection function to stop operation after approximately 10 seconds when one switch (SW2 to SW5) has become open.

Mouser Electronics

Authorized Distributor

Click to View Pricing, Inventory, Delivery & Lifecycle Information:

TDK:

CXA-0488