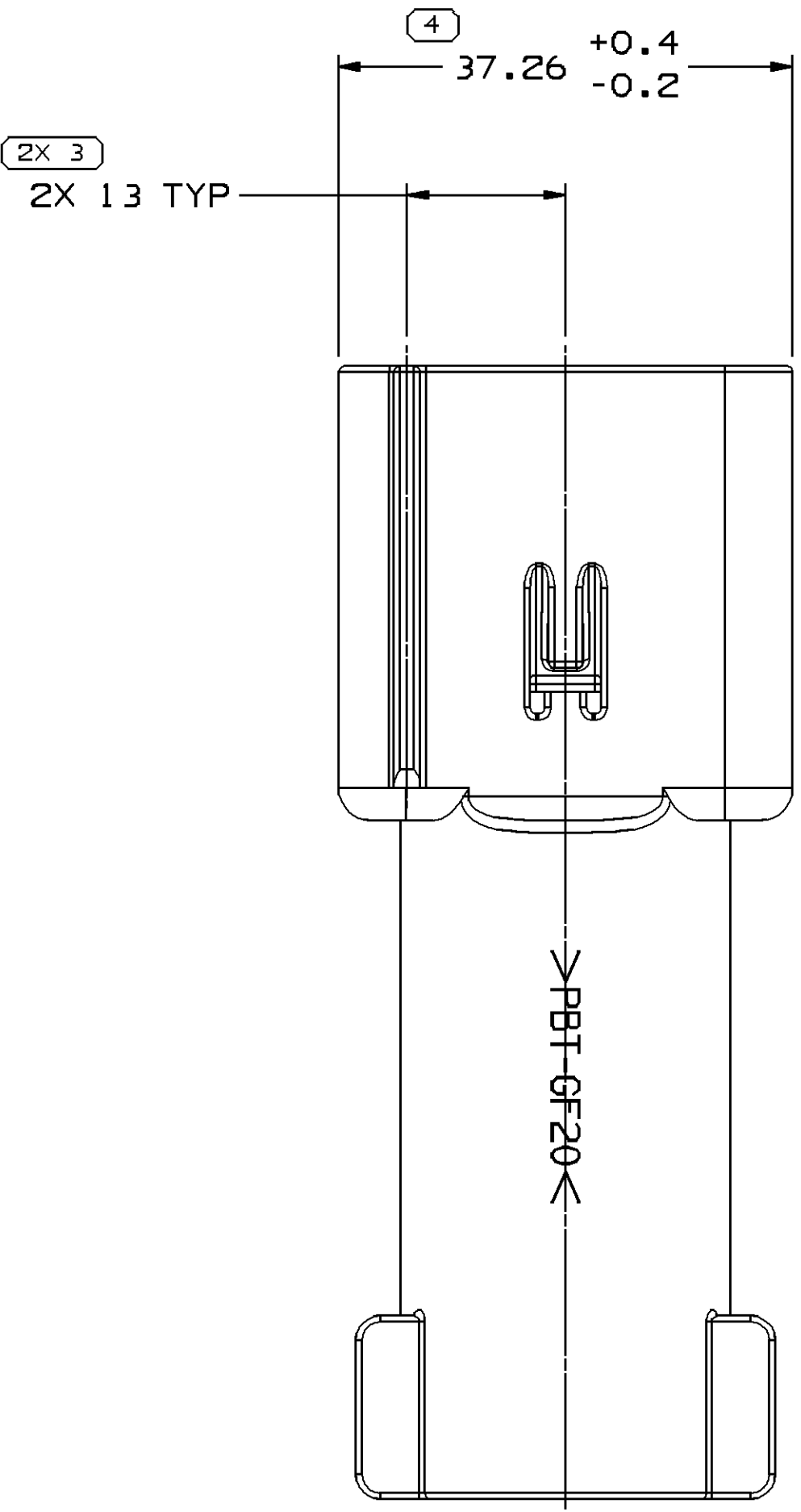
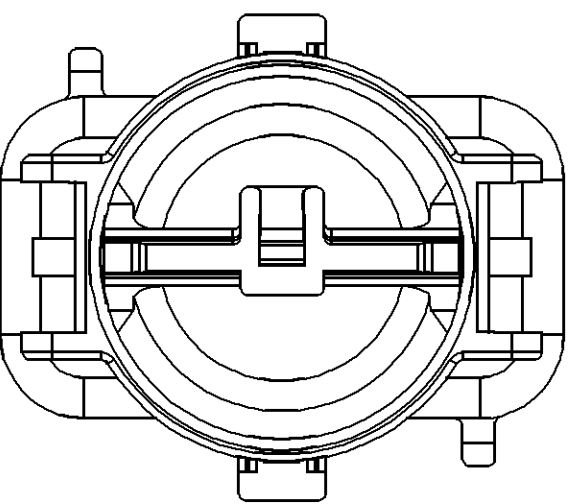
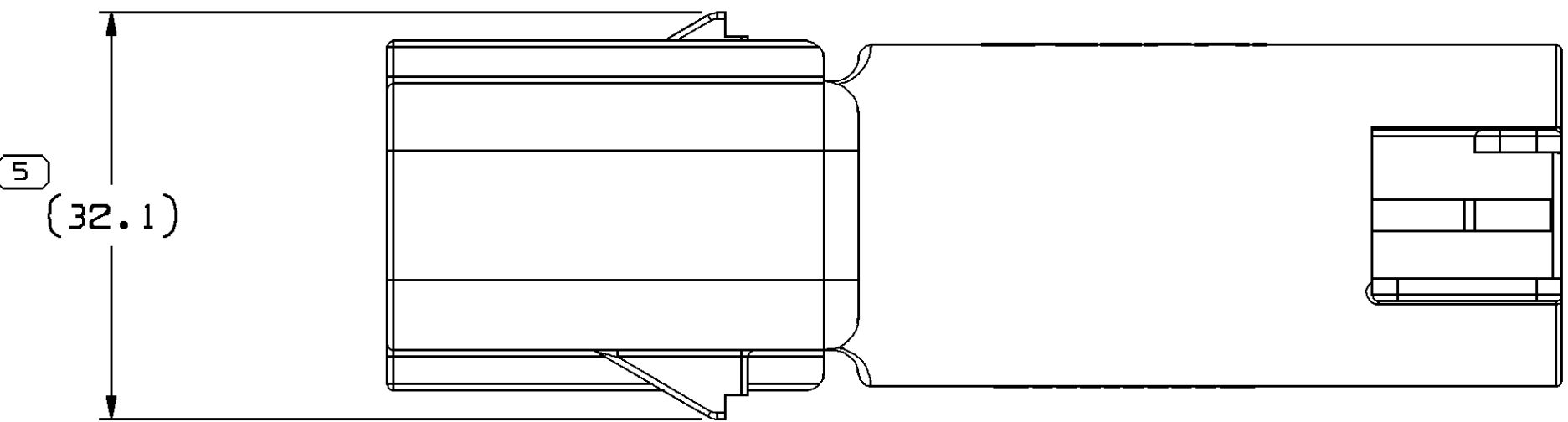
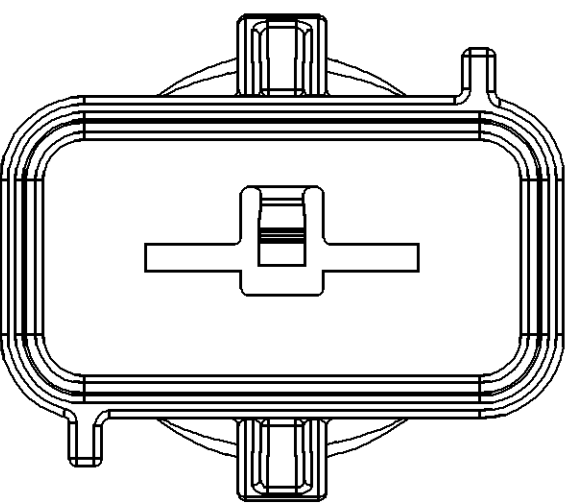
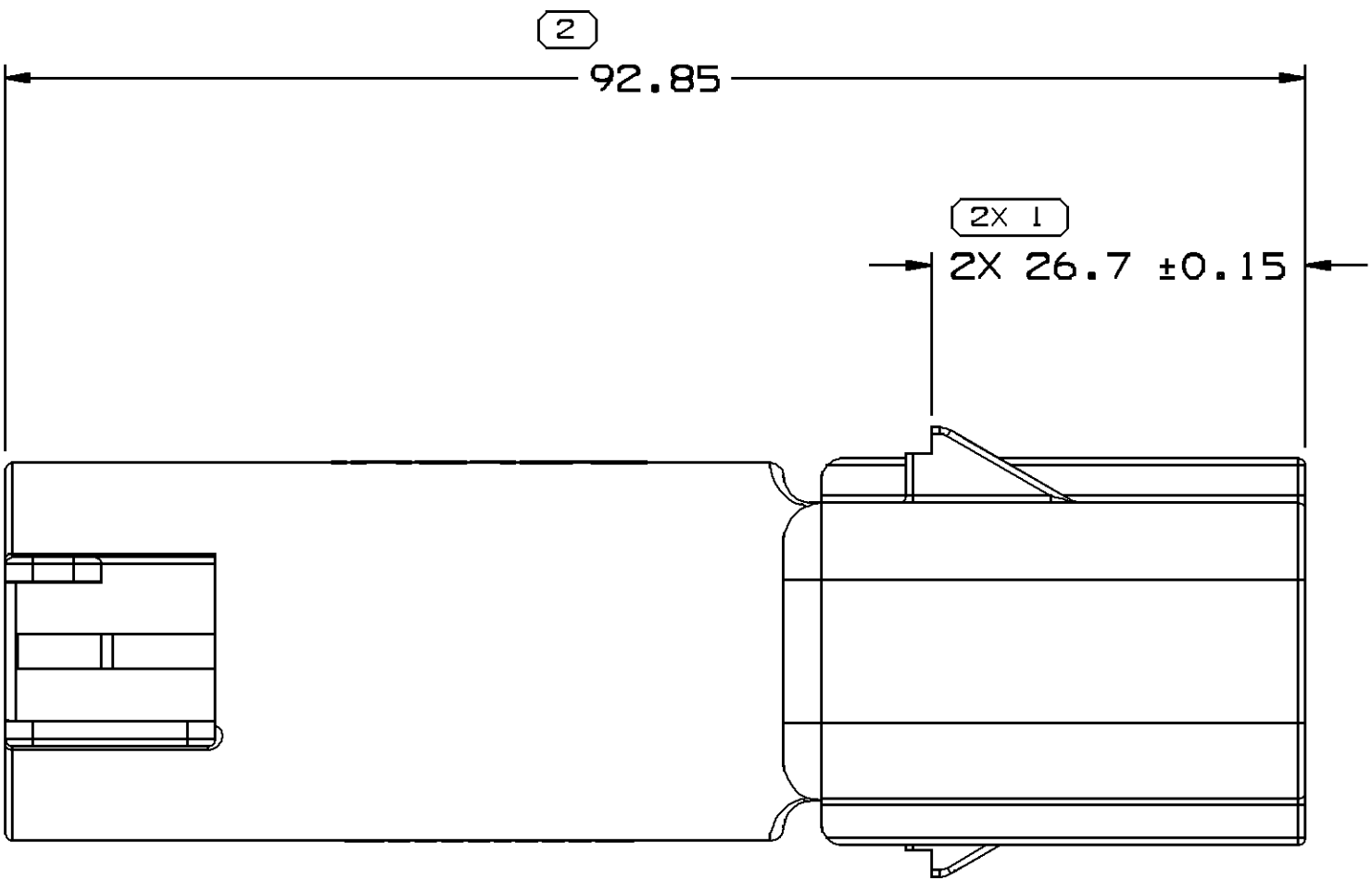
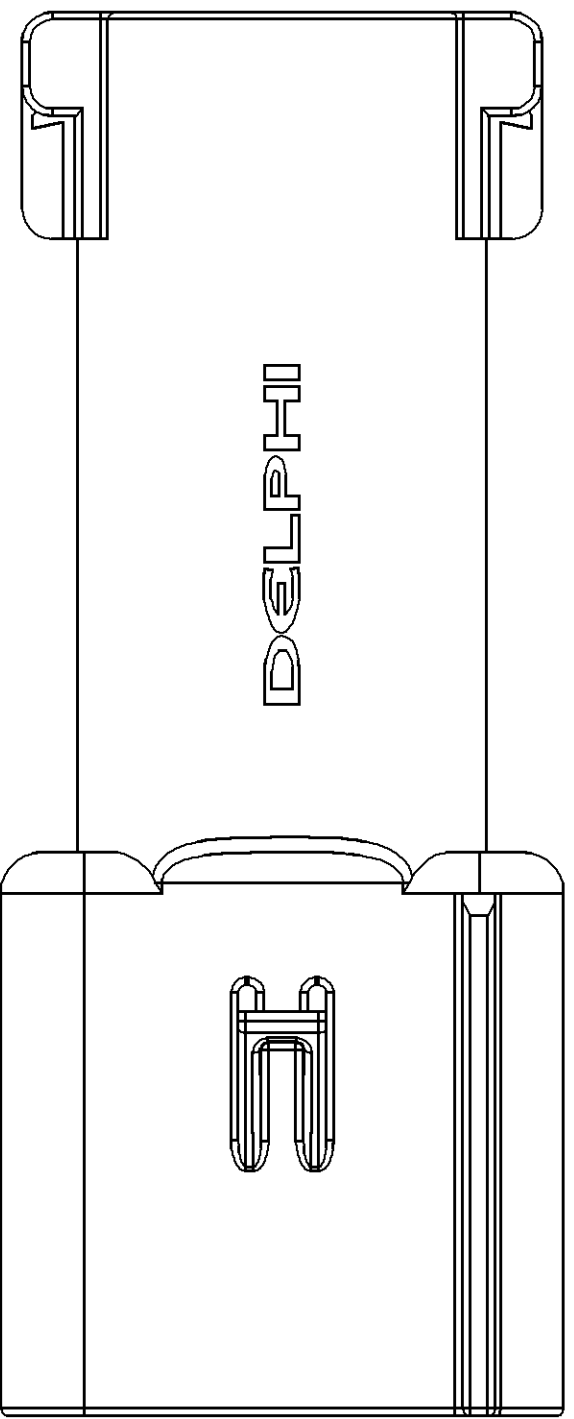


SYMBOL DEFINITION		MISSING SYMBOLS	
A DIMENSION WITHOUT AN INSPECTION REPORT SYMBOL ○ DOES NOT REQUIRE INSPECTION. IT MAY BE CONTROLLED ON THE INDIVIDUAL COMPONENT DRAWING.	TOTAL NO OF INSPECTIONS REQUIRED	NO MISSING SYMBOL NUMBER	
	7		
	LAST NO. USED	5	

DWG STATUS				REVISION HISTORY				AUTH		DR	APVD
DATE	STG	REV	N/P	CHG	ZONE						
04MR05	R	01	-	-		WAS PE133027 AND RELEASED		264996	BRB	BRB	00
13JUL05	R	01	AA	-		UPDATED PDM ATTRIBUTES		270014	TAI	TAI	00
05AUG05	R	01	AB	-		37.26+0.4/-0.2 WAS 37.26+0.2		271088	JS	JS	00
19AP06	R	01	AC	-		ADDED NOTE #6		279620	RH	RH	00



NOTES

1. UNLESS OTHERWISE SPECIFIED AND/OR INDICATED:

DIMENSIONS ARE TO FACE OF VIEW SHOWN AND AUTOMATICALLY ROUNDED BY COMPUTER FOR INSPECTION (SEE MATH MODEL FOR PRECISE DIMENSIONS). FOR ALL OTHER DIMENSIONS NOT SHOWN BUT REQUIRED FOR TOOL BUILD, SEE MATH MODEL FOR PRECISE TOOL PATH DATA.

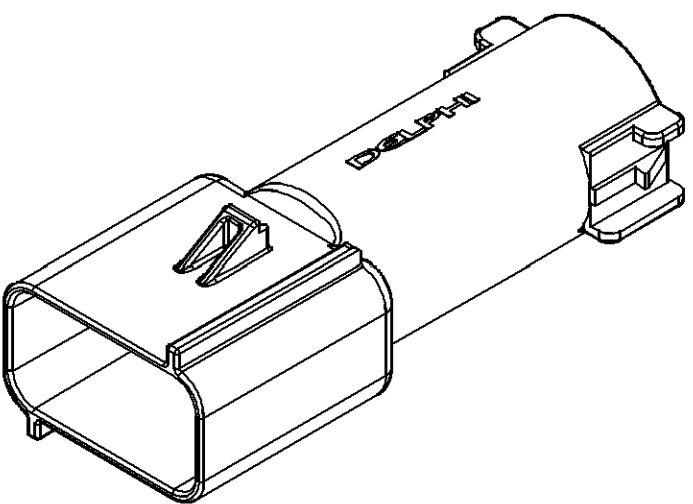
2. MATERIAL RECYCLING CODE PER ISO 11469, (2.31X(0.05) CHARACTERS AS SHOWN TO BE LOCATED ON ANY EXTERIOR SURFACE.

3. REFERENCE MATING COMPONENTS OR EQUIVALENT:
CONNECTOR ASSEMBLY 13520916

4. THIS PART ACCEPTS THE FOLLOWING COMPONENTS OR EQUIVALENT:
TERMINAL 13520914
CABLE SEAL 15411422
TERMINAL POSITION ASSURANCE LOCK 13520911

5. (2.31X(0.05) DELPHI CORPORATE BRAND TO BE LOCATED ON ANY EXTERIOR SURFACE, PREFERABLY VISIBLE AT FINAL ASSEMBLY. OPTIONAL CONSTRUCTION TO BE "PED".

6. CONNECTOR ENGAGE FORCE GREATER THAN 75N



DIMENSIONAL RANGE (MM)		SHORT ET	
FROM	> 0	> 30	> 100
TO	20	30	100
TOLERANCE UNLESS OTHERWISE SPECIFIED		TOLERANCE UNLESS OTHERWISE SPECIFIED	
[+0.15] +0.2		[+0.3] +0.4	
ANGULAR TOLERANCE 22°		[+0.6] +0.8	

PROCESS SENSITIVE DIMENSION	
DIMENSIONS ENCLOSED IN () INDICATE REFERENCE DIMENSIONS AND NO TOLERANCE LIMITS ARE ESTABLISHED	

THIRD ANGLE PROJECTION	
DO NOT SCALE	USE MATH DATA

DWG TYPE	
PART DRAWING	
STYLE	
VOLUME 10/1	DISTR CODE
21,468	D
UNLESS OTHERWISE SPECIFIED	
THIS DOCUMENT IS IN ACCORDANCE WITH ASME Y14.5M-1994 AS MODIFIED BY THE IN-SITU DIMENSIONING AND TOLERANCE ADDENDUM-2001. SEPARATE RATINGS OF FEATURES MAY BE BASED SEPARATELY REGARDLESS OF DATUM REFERENCES.	
ALL DIMENSIONS ARE IN MILLIMETERS	
REFERENCE	

DELPHI
DELPHI PACKARD ELECTRIC SYSTEMS
WARREN, OH

DR	DATE
APVD1 BARRY BURNS	04MR05
APVD2 BARRY BURNS	04MR05
APVD3 GARY DETTER	07MR05
APVD4	
APVD5	

SUBSTANCES OF CONCERN AND RECYCLED CONTENT PER DELPHI 10949001

WATERMARK W4629002 PBT GF20 BLK

DRAWING NAME:
CONN 1 M PWR PACK 2000 BLK SLD

DRAWING NUMBER	
13520909	
SIZE A0	SCALE 2:1
FRAME NO 1	SHEET NO 1 OF 1
STG R	REV 01
N/P AC	

Mouser Electronics

Authorized Distributor

Click to View Pricing, Inventory, Delivery & Lifecycle Information:

[Delphi Connection Systems:](#)

[13520909-B](#)