

uIBX-200 Series



uIBX-200-US15WP

- Ultra low power processor Intel® Atom™ Z510P
- Internal dual SD card slot for storage extension
- Built-in H.264, MPEG1/2/4, VC1/WMV9 decoding



uIBX-200-VX800

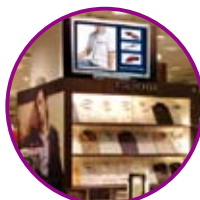
- VIA® Eden™ ULV 1GHz/500 MHz processor
- Support MPEG2, WMV9/VC1 decoding
- Inside SATA connector (SATA DOM)



uIBX-200-US15WP as signage player

uIBX-200-US15WP's chipset has built-in H.264, MPEG1 /2/4, VC1/WMV9 decoder which is capable of displaying high resolution multimedia advertisements. Content can be updated through Internet remotely, or directly from USB device and stored in SD memory. While contents is stored in SD card, operating system is installed in Compact Flash, prevents OS damage during frequent read/write of content to the same disk. The lockable door also can avoid the CF from unauthorized access.

The compact size and fanless design of uIBX-200 makes it very flexible in field installation for application with limited space. With uIBXVK-200B double side VESA75 mount kit, uIBX-200 can be installed between display stands and display monitor. Its quiet fanless operation is also ideal for environment which is noise sensitive such as museums and libraries.



Multimedia player



On shelf promotion



Library

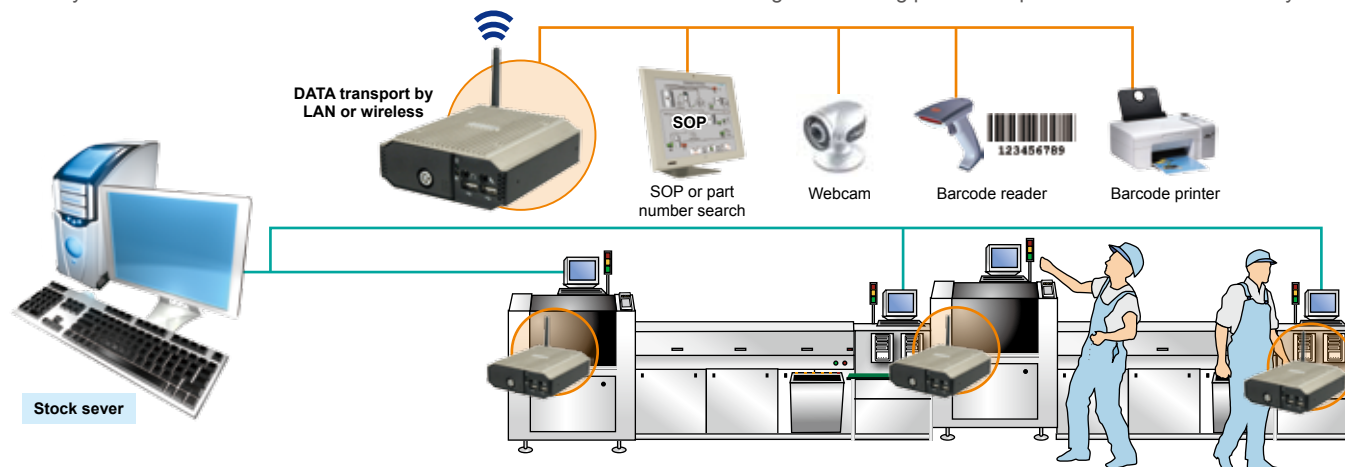


Museum

uIBX-200-VX800 at Production Line

uIBX-200-VX800 has all the essential functions to work as a thin client in production line. Operators can read the assembly SOP and search the part number online, get constant update of production schedule and other instructions from management.

During production the barcode of the components can be collected by barcode scanner and update to production server either by batch or instantly via LAN or WiFi connection. Webcam can also be installed to collect image data during production process whenever necessary.



Ultra low power & High graphic performance

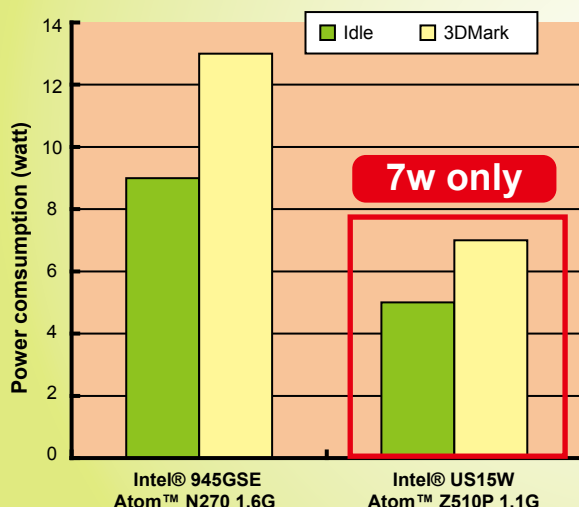


» uIBX-200-US15WP

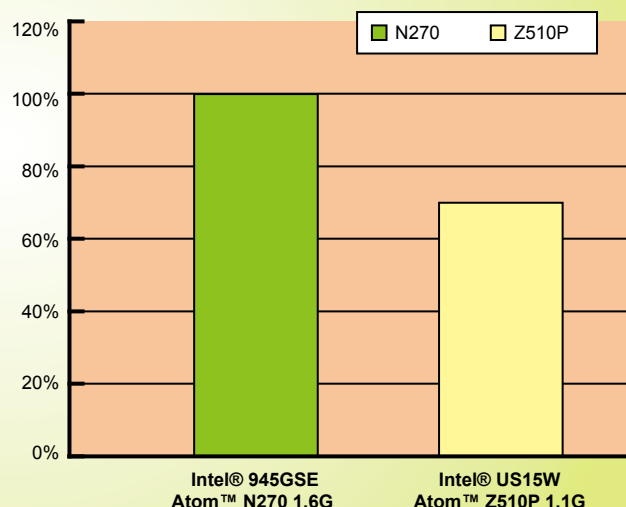
Intel® US15WP is the one with lowest power consumption among Intel® low power chipset solution. Compare with another Intel® Atom™ family chipset 945GSE+N270 running 3DMark under Windows XP, the power consumption of US15WP is 40% lower than of 945GSE+N270.

With built-in multimedia decode engine, uIBX-200-US15WP can play HD H.264 movie smoothly while CPU still has usage available to handle more tasks.

Comparison between N270 & Z510P



H.264 graphic performance CPU loading with H/W acceleration



Ultra Compact Size

With slim and small design, uIBX-200 series have great advantage when you have space design concern. uIBX-200 series not only easy for you to make storage, but also easy to set up in limited environment.



Ultra compact size



500g only



Small size display application

Smart Mounting Design



A. Wall mount

VESA 75 support. Easy to mounting whatever TOP side or BOTTOM side.



AFLWK-12

uIBX-200 can be directly mounted on the wall with VESA 75 mounting kit



B. VESA mount 75

Step.1



Install the mount kit in back of monitor.

Step.2



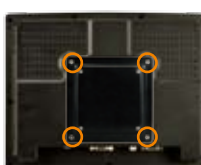
Assembling uIBX-200, stand and panel.

Step.3



Screw to fix uIBX-200. As different applications, the direction of assembling can be changed.

C. VESA mount 100



Screw to fix VK-75100B and panel



Mount it on the back of an LCD monitor to save even more space and create an all-in-one PC at the same time.

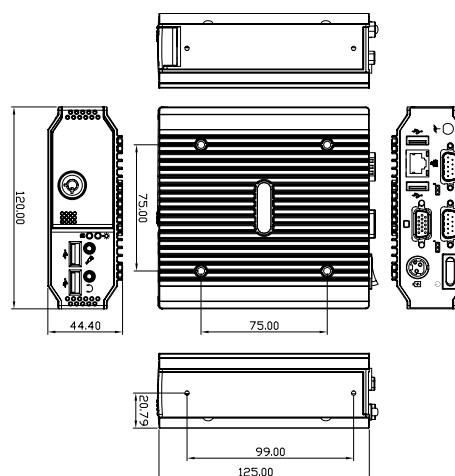
Specifications

Model	ulBX-200-US15WP	ulBX-200-VX800
Processor	Intel® Atom™ Z510P 1.1GHz	VIA® Eden™ ULV 1GHz/500 MHz
Chipset	Intel® US15WP	VIA VX800
System memory	1GB DDR2 onboard memory	1GB /500 MB DDR2 onboard memory
Display	1 x VGA	
USB	4 x USB	
Serial port	2 x RS-232	
Audio	1 x mic in, 1 x speaker out	
Wireless (optional)	802.11b/g mini PCIe module	
Storage Device	1 x CompactFlash Type II slot & 2 x SD slots	1 x CompactFlash Type II slot & 1 x SATA DOM
Power Input	5VDC in, with 25W power adaptor	5VDC in, with 17W power adaptor
Operation temp.	0°C ~ 50°C	0°C ~ 50°C
System power consumption	9.5 W	15 W
Operation Shock	Half-sine wave shock 3G; 11ms; 3 shocks per axis	
Operation Vibration	MIL-STD-810F 514.5C-2	
Construction	Aluminum alloy casing, Plastic front panel	
Dimensions	120mm(W) x 125mm(D) x 44mm (H)	
Weight (Net/ Gross)	480g/1.5kg	
Mounting	Desktop, VESA mount, Double VESA mount with VESA adaptor	
EMC/Safety	CE, FCC class A, CCC, UL	

Packing List

1 x QIG
1 x Driver CD
2 x keys
1 x Screw set
1 x Power adaptor
1 x 2dbi wireless antenna (for wireless model only)

Dimensions (Unit:mm)



Ordering Information

ulBX-200-US15WP

Part No.	Description
ulBX-200-US15WP-R10/Z510P/1GB	Fanless embedded system with Intel® Atom™ Z510P 1.1GHz CPU, US15WP system chipset, onboard 1GB DDR2 memory, 5VDC in, with 25W power adaptor, black, RoHS
ulBX-200-US15WP-W-R10/Z510P/1GB	Fanless embedded system with Intel® Atom™ Z510P 1.1GHz CPU, US15WP system chipset, onboard 1GB DDR2 memory, built-in 802.11b/g wireless, 5VDC in, with 25W power adaptor, black, RoHS

ulBX-200-VX800

ulBX-200-VX800-R10/500/512MB	Fanless embedded system with VIA Eden ULV 500Hz CPU, VX800 chipset, onboard 512MB DDR2 memory, 5VDC-In, with 17W power adaptor, black, RoHS
ulBX-200-VX800-W-R10/500/512MB	Fanless embedded system with VIA Eden ULV 500Hz CPU, VX800 chipset, onboard 512MB DDR2 memory, built-in 802.11b/g wireless, 5VDC-In, with 17W power adaptor, black, RoHS
ulBX-200-VX800-R10/1GZ/1GB	Fanless embedded system with VIA Eden ULV 1GHz CPU, VX800 chipset, onboard 1GB DDR2 memory, 5VDC-In, with 17W power adaptor, black, RoHS
ulBX-200-VX800-W-R10/1GZ/1GB	Fanless embedded system with VIA Eden ULV 1GHz CPU, VX800 chipset, onboard 1GB DDR2 memory, built-in 802.11b/g wireless, 5VDC-In, with 17W power adaptor, black, RoHS

Embedded OS options

ulBXCF-200-US15WP-CE060	Windows® CE 6.0 OS image, for ulBX-200-US15WP, with 128 MB compact Flash memory card, RoHS
ulBXCF-200-US15WP-XPE	Windows® XP Embedded OS image, for ulBX-200-US15WP, with 1GB Compact Flash memory card, RoHS
ulBXCF-200-VX800-CE060	Windows® CE 6.0 OS image, for ulBX-200-VX800, with 128 MB compact Flash memory card, RoHS
ulBXCF-200-VX800-XPE	Windows® XP Embedded OS image, for ulBX-200-VX800, with 1GB compact Flash memory card, RoHS

Mounting kit

ulBXVK-200B	VESA mount kit for ulBX-200, black
VK-75100B	VESA mount 75 to100 adapter, black