


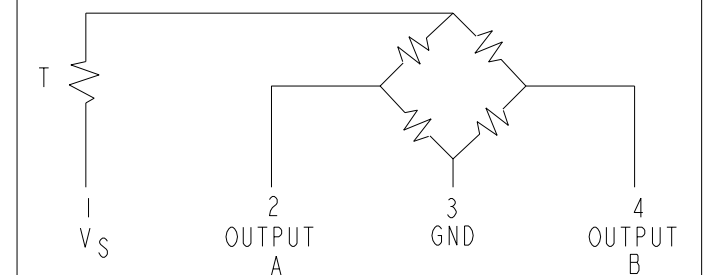
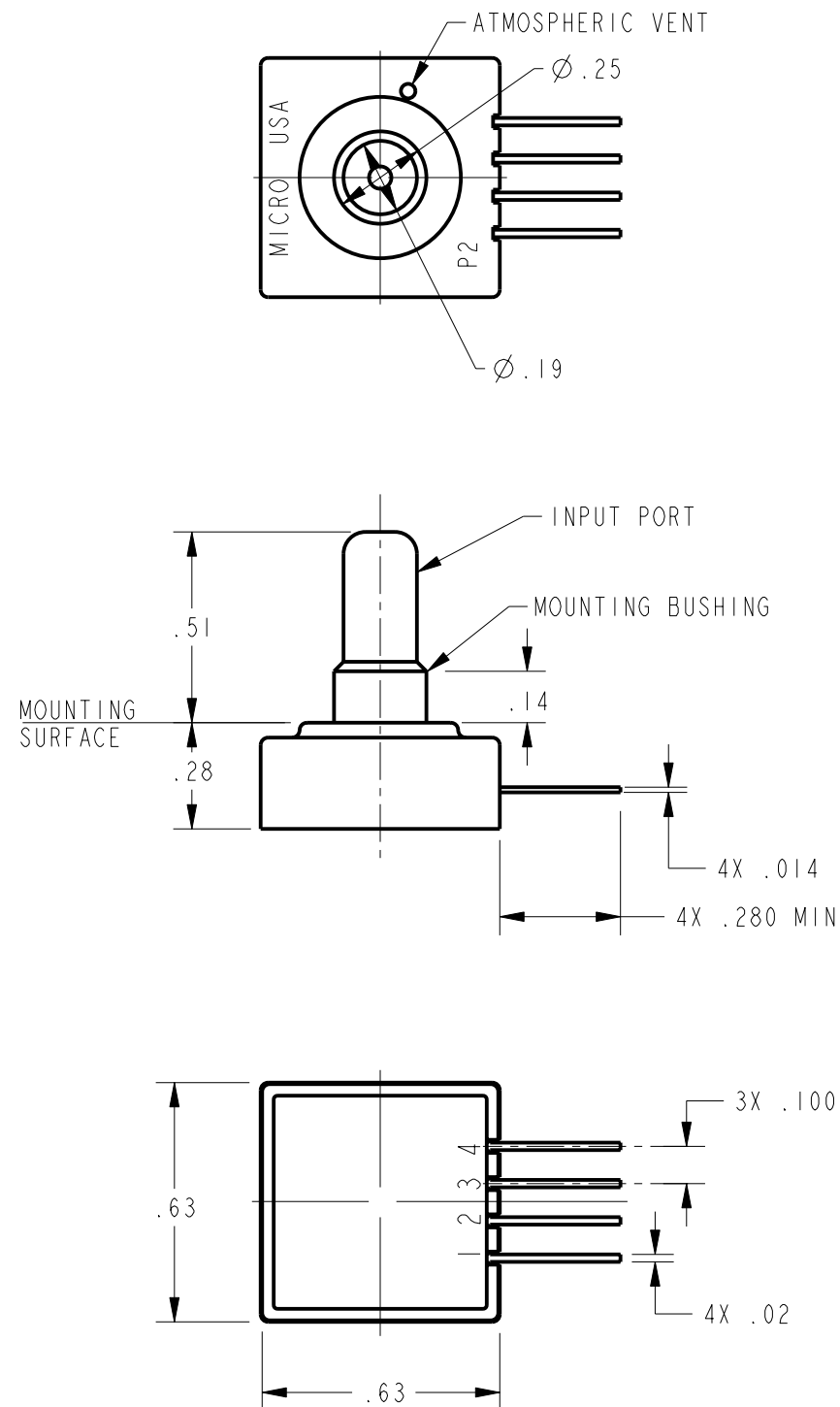


THIS DRAWING COVERS A PROPRIETARY ITEM AND IS THE PROPERTY OF MICRO SWITCH, A DIVISION OF HONEYWELL. THIS DRAWING IS NOT TO BE COPIED OR USED WITHOUT THE APPROVAL OF MICRO SWITCH

PRESSURE RANGE	0 TO 5170 mmHg (0 TO 100 PSIG)
OVERPRESSURE	7755 mmHg (150 PSI)
TEMPERATURE RANGES	
STORAGE	-55° TO +125°C
OPERATE	-40° TO +85°C
COMPENSATED	0°C TO +50°C
SUPPLY VOLTAGE	16 VDC MAX
INPUT RESISTANCE	6800 OHM TYP

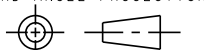
NULL OFFSET	0 ± 1 mV (AT 0 PSI)
F.S.O. 	100 ± 4 mV ( 0 TO 100 PSI)
LINEARITY (BFSL) INPUT > VENT	± .4% F.S.O. MAX 
HYSTERESIS & REPEATABILITY	± .15% F.S.O. TYP 

NULL SHIFT	$\pm 2 \text{ mV MAX}$
SENSITIVITY SHIFT	$\pm 3.0\% \text{ F.S.O. MAX}$ $\sqrt{3}$



OUTPUT "A"	INCREASES AS INPUT PRESSURE INCREASES
OUTPUT "B"	DECREASES AS INPUT PRESSURE INCREASES

- NOTES
- 1 - TERMINALS ARE PLATED FOR SOLDERING
  - 2 - LIMIT SOLDERING TO 315°C MAX FOR 10 SECONDS MAX
  - 3 - F.S.O. IS THE ALGEBRAIC DIFFERENCE BETWEEN THE OUTPUT  
END POINTS (NULL AND FULL PRESSURE)
  - 4 - INPUT MEDIA LIMITED ONLY TO THOSE MEDIA THAT WILL NOT  
ATTACK POLYESTER, SILICON OR EPOXY



WEIGHT