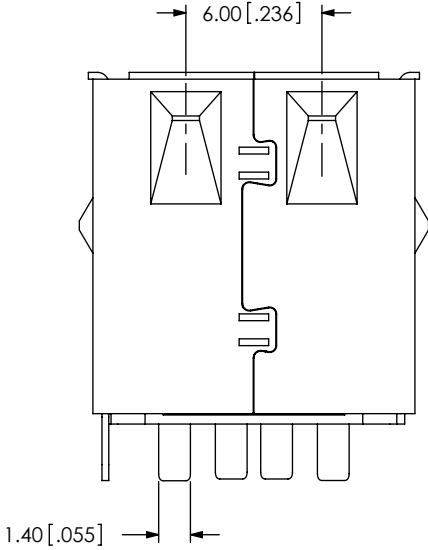
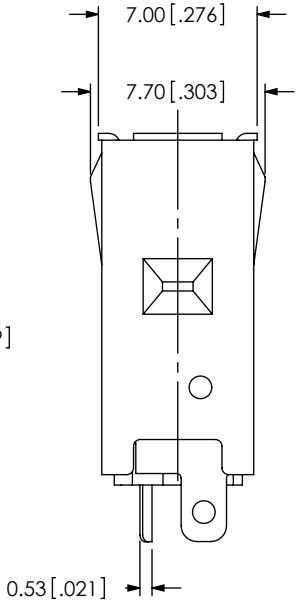
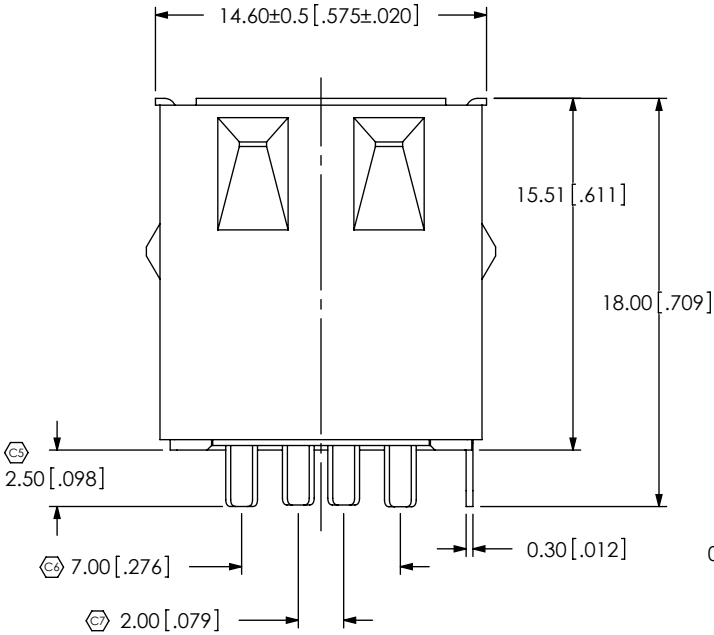
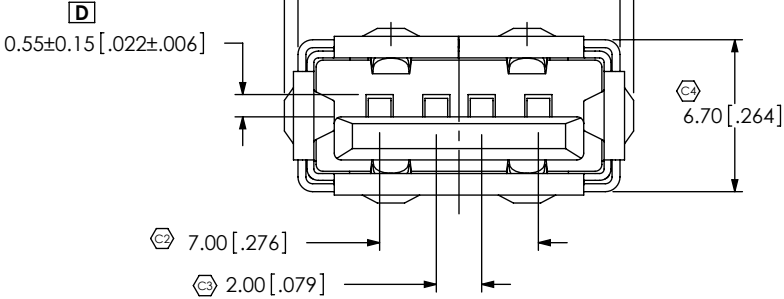


DO NOT
SCALE FROM
THIS PRINT



USB-A-S-X-X-VTS-X

TYPE
-A

CONFIGURATION
-S: SINGLE

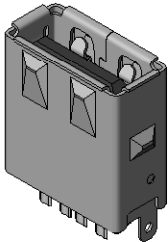
PLATING SPECIFICATION
-F: GOLD FLASH IN MATING AREA, MATTE TIN ON TAILS, OVER .000050"-.000150" NICKEL
-S: SELECTIVE, .000030" GOLD IN MATING AREA, MATTE TIN ON TAILS, OVER .000050"-.000150" NICKEL

EI OPTION
-R: ROHS COMPLIANT

TERMINATION
-VTS: VERTICAL W/ SOLDER TAILS

COLOR
-B: BLACK

- NOTES:
1. REPRESENTS A CRITICAL DIMENSION.
 2. ALL PARTS ARE ROHS COMPLIANT WITH OR WITHOUT -R.



UNLESS OTHERWISE SPECIFIED, DIMENSIONS ARE IN MILLIMETERS. TOLERANCES ARE: DECIMALS ANGLES X.X: ±0.30 [.012] X.XX: ±0.20 [.007] X.XXX: ±0.05 [.002]		PROPRIETARY NOTE THIS DOCUMENT CONTAINS INFORMATION CONFIDENTIAL AND PROPRIETARY TO SAMTEC, INC. AND SHALL NOT BE REPRODUCED OR TRANSFERRED TO OTHER DOCUMENTS OR DISCLOSED TO OTHERS OR USED FOR ANY PURPOSE OTHER THAN THAT WHICH IT WAS OBTAINED WITHOUT THE EXPRESSED WRITTEN CONSENT OF SAMTEC, INC.	
MATERIAL: DO NOT SCALE DRAWING SHEET SCALE: 2:1 INSULATOR: PBT CONTACT: PHOS BRONZE SHIELD: COLD ROLLED STEEL, NICKEL PLATED		DESCRIPTION: VERTICAL USB W/ OUTER SHIELD AND SOLDER TAILS DWG. NO. USB-A-S-X-X-VTS-X	
BY: B. HARPENAU 6/22/2007		SHEET 1 OF 1	