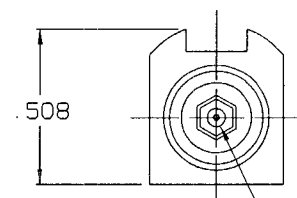
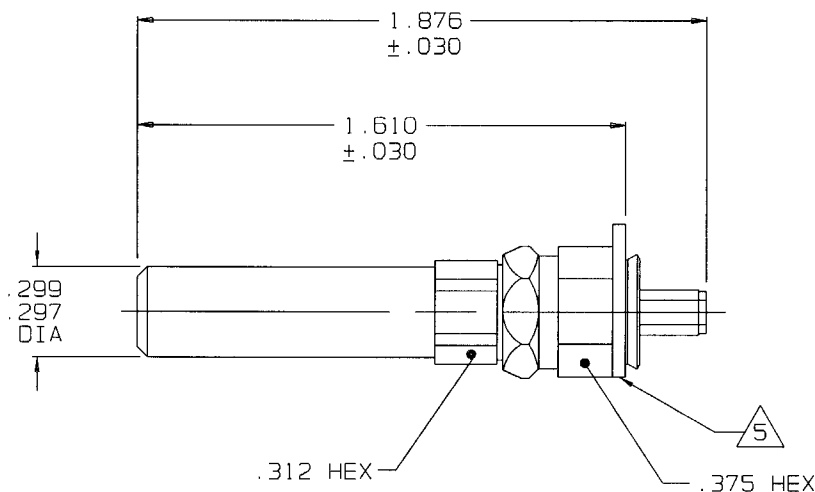


| DASH NO | CABLE ACCOMMODATED | A HEX |
|---------|--|----------|
| -009 | 8218, BELDEN 21-597, ESSEX YR23023, BELDEN | .178 |
| -013A | TCC-75-2 8241F, BELDEN | .255 |
| -014 | 8212, BELDEN | .255 |
| -025 | 734A TYPE | |
| -026 | 735A TYPE | .178 |
| -027 | KS19224L2 LUCENT | |

DATA CONTAINED IN THIS DOCUMENT IS
PROPRIETARY TO TROMPETER ELECTRONICS INC.
AND SHALL NOT BE DISCLOSED, COPIED OR USED
FOR PROCUREMENT OR MANUFACTURE WITHOUT
EXPRESS WRITTEN PERMISSION OF TROMPETER
ELECTRONICS INC.

| REVISIONS | | PLIMWLT | SH 1 |
|-----------|--------------------|---------|----------|
| REV | DESCRIPTION | DATE | APPROVED |
| A | PRODUCTION RELEASE | | |

RED INDICATES ORIGINAL



CABLE ENTRY

| | |
|-----------|---------|
| MODEL NO. | TEI P/N |
| PLIMWLT | 1-0504 |

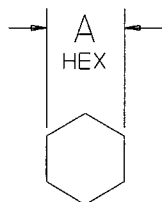
5 PLATE TO ROTATE FREELY AFTER
WITHSTANDING AN AXIAL FORCE OF
25 LBS IN THE DIRECTION OF THE
CABLE ENTRY

4 ASSEMBLE IAW TAI-200 EXCEPT
INSTALL NUT ASSY OVER CABLE
PRIOR TO TERMINATING CONNECTOR

3 SEE TABLE FOR CABLE ACCOMMODATED


2. 75 OHM COAXIAL MINIATURE TOOL
CRIMP PATCH PLUG, IN STANDARD
CRIMP DESIGN, WITH ENTRY BUSHING

1. FINISH: TFS-1B (2G-GOLD)



RECOMMENDED
HEX CRIMP

OUTLINE DRAWING

| | | | | | | | |
|--|-----------------|--|--|---|--------------|---|--------------|
| INTERPRET DRAWING PER MIL-STD-100 DIMENSIONS ARE IN INCHES AND INCLUDE FINISH THICKNESS UNLESS OTHERWISE SPECIFIED | | TOL: UNLESS SPECIFIED .XX ± .02 .XXX ± .010 .XXXX ANGLES | |  TROMPETER • ELECTRONICS, INC. | | | |
| DRAWN PD | DATE 1-10-02 | MATERIAL: | | | | TITLE: 75 OHM PATCH PLUG, STANDARD CRIMP DESIGN | |
| CHECKED | | FINISH: | | SIZE | CAGE CODE | DRAWING NO. | REV. |
| QUALITY | | | | A | 14949 | PL1MHLT | A |
| MANUF | 1-17-02 | | | SCALE | 2/1 | DATE: 1-17-02 | SHEET 1 OF 1 |
| APPROVED K. M. G. 1/16/02 | | DO NOT SCALE DWG | | | | | |

Mouser Electronics

Authorized Distributor

Click to View Pricing, Inventory, Delivery & Lifecycle Information:

[Emerson Connectivity Solutions:](#)

[PL1MWLT-026](#)