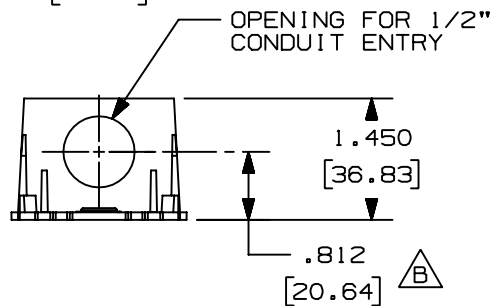
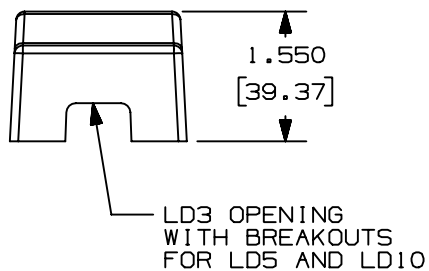
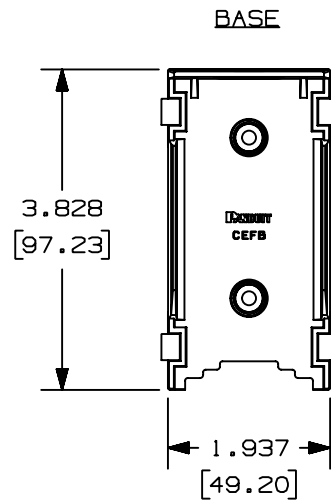
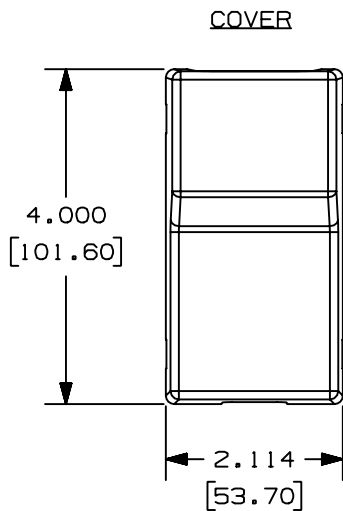


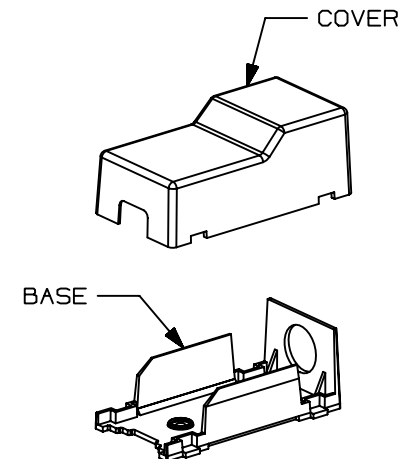
THIS COPY IS PROVIDED ON A RESTRICTED BASIS AND IS NOT TO BE USED IN ANY WAY DETRIMENTAL TO THE INTERESTS OF PANDUIT CORP.



PANDUIT P/N	WEIGHT
CEFX-X	.143 lbs [64.88 g]

NOTES:

1. SEE CURRENT CATALOG FOR ADDITIONAL PART NUMBER SUFFIXES TO INDICATE COLOR AND/OR PACKAGE QUANTITY.
2. DIMENSIONS IN PARENTHESIS ARE METRIC.



CAD FILENAME/LAYERS D38913AB_DC_CEFX_04D.PRT

PANDUIT CORP. TINLEY PARK, ILLINOIS

CONDUIT ENTRANCE FITTING BASE AND COVER (CEFX)
CUSTOMER DRAWING

3	01-17-05	JHEP	RMHI	B. ADDED DIMENSION	38913-03	RGR0	RGR0		
2	12-21-04	JHEP	RMHI	A. ADDED MATERIAL INFORMATION	38913-03	RGR0	RGR0		
1	11-29-04	JHEP	RMHI	RELEASED TO PRODUCTION	38913-03	RGR0	RGR0		
R	08-17-04	JHEP	RMHI	DRAWING RELEASED					
REV	DATE	BY	CHK	DESCRIPTION	ECN	CHK	CUST	SUP	

UNLESS OTHERWISE SPECIFIED,
DIMENSIONAL TOLERANCES ARE:
(.X) ± (.XXX) ±.005
(.XX) ±.010 ANGLES ±1°

UNLESS OTHERWISE SPECIFIED,
ALL DIMENSIONS ARE GIVEN
IN INCHES, THIRD ANGLE PROJECTION.

DRAWN BY
JHEP

DATE
08-17-04

CHK'D
RMHI

MAT'L:



PVC

SCALE NONE

DRAWING NO.

38913-03

DWG

A
SIZE

Mouser Electronics

Authorized Distributor

Click to View Pricing, Inventory, Delivery & Lifecycle Information:

Panduit:
CEFXIW-X