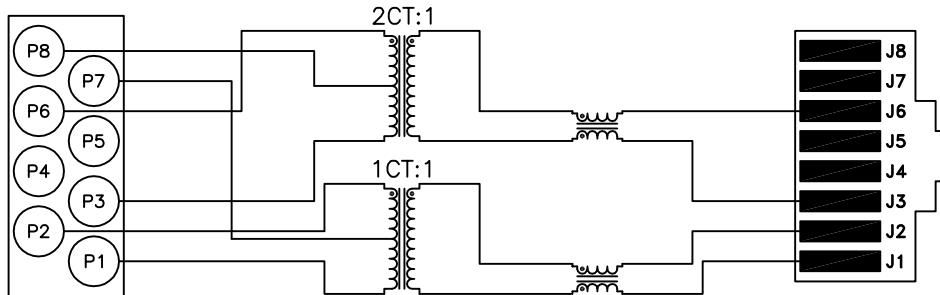
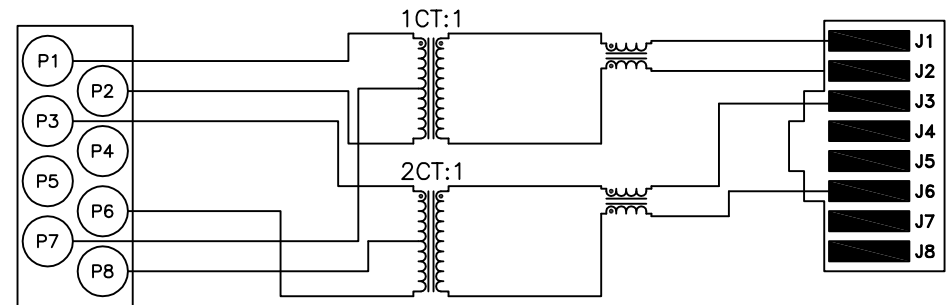


## LOWER ROW



## UPPER ROW



### NOTES:

1.0 PINS P4 AND P5 ARE OMITED.

### ELECTRICAL SPECIFICATIONS:

- |                               |                              |                              |
|-------------------------------|------------------------------|------------------------------|
| 1.0 TURNS RATIO:              | (P2-P7-P1) : (J2-J1)         | : 1CT : 1 ± 3%               |
|                               | (P3-P8-P6) : (J3-J6)         | : 2CT : 1 ± 3%               |
| 2.0 INDUCTANCE:               | (P6-P3)                      | : 140 uH MIN. @ 0.01V, 10KHz |
|                               | (P2-P1)                      | : 140 uH MIN. @ 0.01V, 10KHz |
| 3.0 LEAKAGE INDUCTANCE:       | P6-P3 (WITH J6 AND J3 SHORT) | : 1.0 uH MAX. @ 1MHz         |
|                               | P2-P1 (WITH J2 AND J1 SHORT) | : 0.3 uH MAX. @ 1MHz         |
| 4.0 INTERWINDING CAPACITANCE: | (P6,P8,P3) TO (J6,J3)        | : 12 pf MAX @ 1MHz           |
|                               | (P2,P7,P1) TO (J2,J1)        | : 12 pf MAX @ 1MHz           |
| 5.0 DC RESISTANCE:            | (J6-J3) : (J1-J2)            | : 1.0 ohms Max.              |
|                               | (P6-P3)                      | : 1.0 ohms Max.              |
|                               | (P2-P1)                      | : 0.6 ohms Max.              |

Bel Stewart Connector  
11118 Susquehanna Trail, South  
Glen Rock, Pa 17327-9199  
717.234.7512

**MagJack®**

<http://www.stewartconnector.com>

THIS DRAWING AND THE SUBJECT MATTER SHOWN THEREON ARE CONFIDENTIAL AND PROPERTY OF BEL STEWART CONNECTOR AND SHALL NOT BE REPRODUCED, COPIED, OR USED IN ANY MANNER WITHOUT PRIOR WRITTEN CONTENT OF BEL STEWART CONNECTOR. THE SUBJECT MATTER MAY BE PATENTED OR A PATENT MAY BE PENDING.

SHEET  
1 OF 3

DRAWING NO.

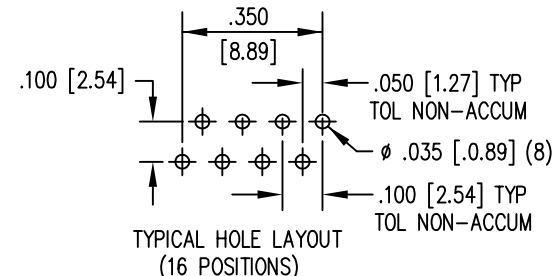
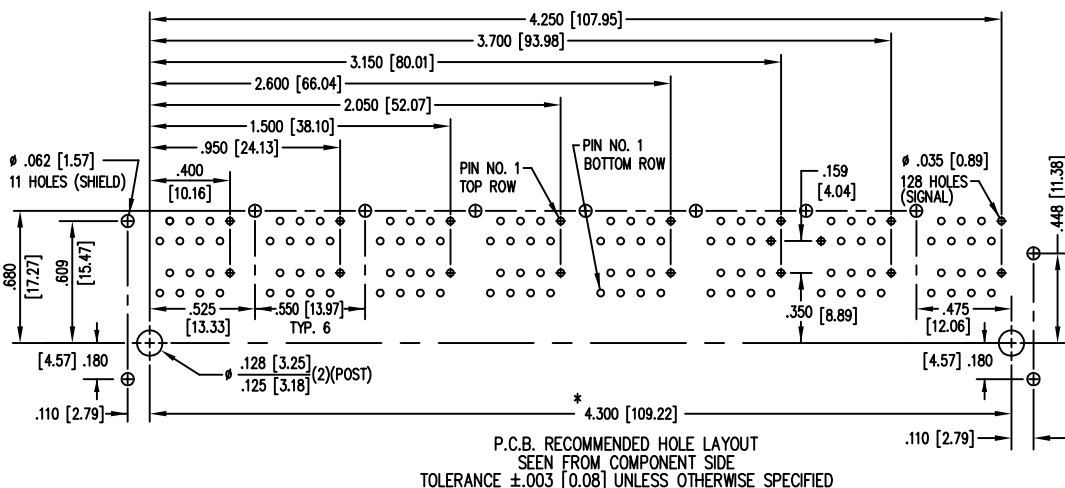
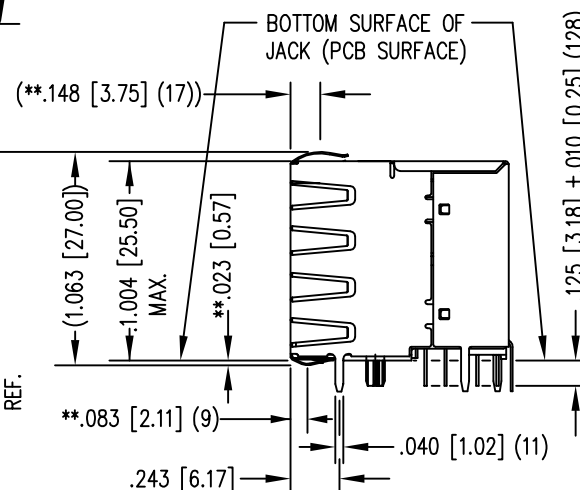
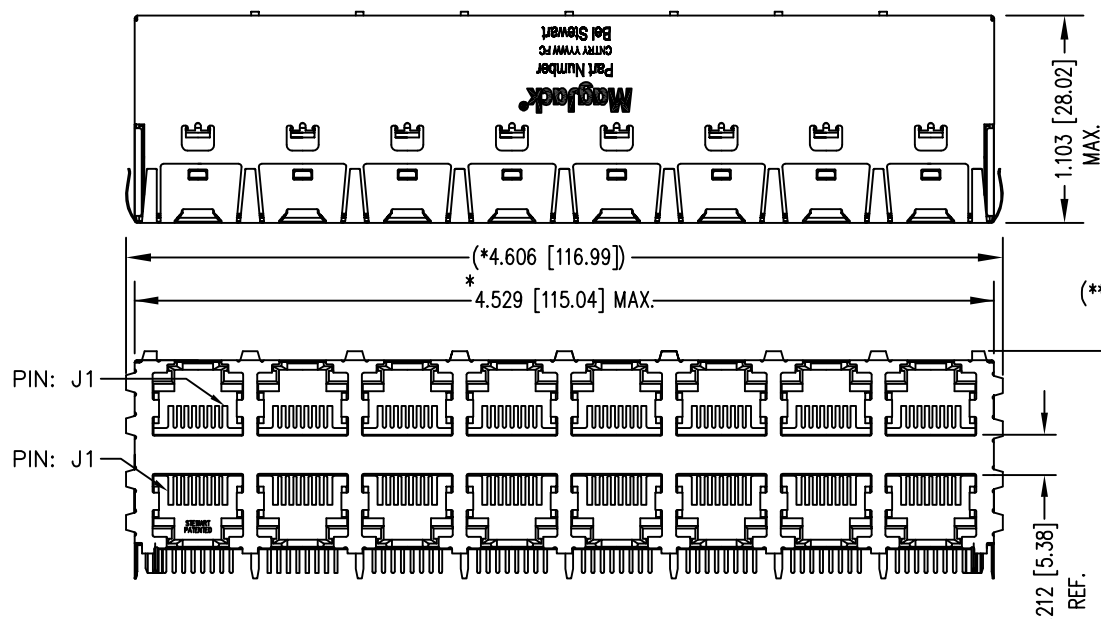
SI-30148

REV. 02

SHIELDING: "PG4-02" EMI-RFI 2 PIECE SHIELDED, ESD GROUND  
16 PORTS (8 OVER 8) STACKED JACK

# NOTES:

- TOLERANCES COMPLY WITH F.C.C. DIMENSION REQUIREMENTS.
- DIMENSIONS SHOWN WITH "\*" TO BE CENTRAL ABOUT CENTER LINE.
- DIMENSIONS SHOWN ARE SUBJECT TO CHANGE WITHOUT NOTICE.
- PINS NOT ELECTRICALLY CONNECTED MAYBE OMITTED.
- SEE ELECTRICAL DRAWINGS FOR OMITTED PINS.
- 50 MICRO-INCH SELECTIVE GOLD PLATING
- WAVE SOLDER COMPATABLE - PREHEAT 125°C/90 SECS MAX.
- ALL POLYMERS FLAMMABILITY - UL94V0



CT720114

THIS DRAWING AND THE SUBJECT MATTER SHOWN THEREON ARE CONFIDENTIAL AND PROPERTY OF BEL STEWART CONNECTOR AND SHALL NOT BE REPRODUCED, COPIED, OR USED IN ANY MANNER WITHOUT PRIOR WRITTEN CONTENT OF BEL STEWART CONNECTOR. THE SUBJECT MATTER MAY BE PATENTED OR A PATENT MAY BE PENDING.

Bel Stewart Connector  
11118 Susquehanna Trail, South  
Glen Rock, Pa 17327-9199  
717.234.7512

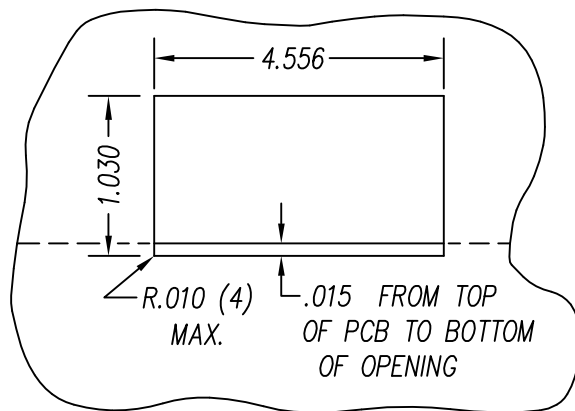
**MagJack**

<http://www.stewartconnector.com>

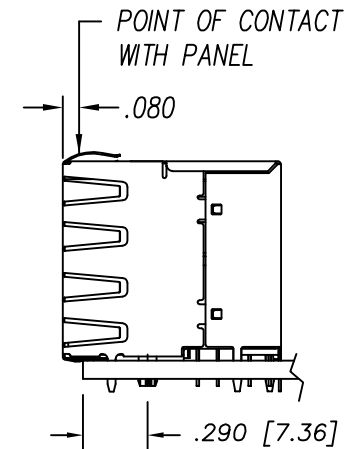
SHEET  
2 OF 3

DRAWING NO.

SI-30148 REV. 06



SUGGESTED PANEL OPENING  
(N.T.S.)



THE SUGGESTED PANEL OPENING IS INTENDED  
TO GIVE THE USER THE ABILITY TO HAVE  
REASONABLE JACK / PANEL CLEARANCES  
YET MAINTAIN RELIABLE GROUNDING  
CAPABILITY.

CT720114

THIS DRAWING AND THE SUBJECT MATTER SHOWN THEREON ARE CONFIDENTIAL AND PROPERTY OF BEL STEWART CONNECTOR AND SHALL NOT BE REPRODUCED, COPIED, OR USED IN ANY MANNER WITHOUT PRIOR WRITTEN CONTENT OF BEL STEWART CONNECTOR. THE SUBJECT MATTER MAY BE PATENTED OR A PATENT MAY BE PENDING.

Bel Stewart Connector  
11118 Susquehanna Trail, South  
Glen Rock, Pa 17327-9199  
717.234.7512

**MagJack®**

<http://www.stewartconnector.com>

SHEET  
3 OF 3

DRAWING NO.

SI-30148 REV. 06