

TM-109 Fixed Eye Snap

PRODUCT



Characteristic

Since it is made of forging, it bears large load so that it can be used for heavy weight subject safely.

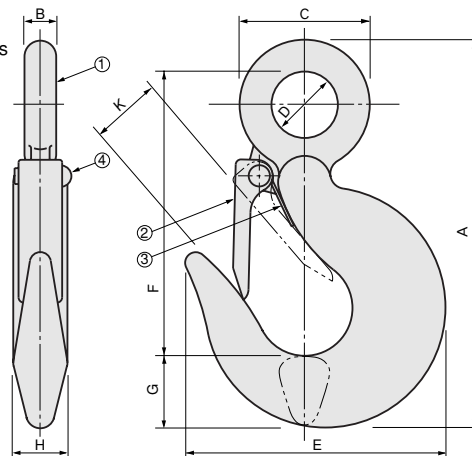
Application

Transporting heavy weight subject / Industrial vehicles, etc.

Note

1. TM-109-1 and 2 are made of SF, and TM-109-3, 4, and 5 are made of SC.
2. Since it is a commercial product, listed sizes should be considered as an outline.

And please be aware that these sizes shall be changed without any notice.



Parts List

No.	Part Name	Material	Finish	Quantity
1	Hook	Note 1	Zn	1
2	Stopper	SPCC	Zn	1
3	Spring	SWP	Zn	1
4	Pin	SWRM	Zn	1

Size List

Product No.	A	B	C		D	E	F	G	H		Without Stopper	With Stopper	K	
			Without Stopper	With Stopper					Without Stopper	With Stopper			Without Stopper	With Stopper
1	103	8.5	32		15.5	53	78	16	11	12	20	15		
2	125	13	46	45	20	80	88	24	17	17.5	24	18		
3	146	12	49		25	98	107	27		20.5	31	26		
4	181	16	64		32	120	130	35		26	39	32		
5	209	18	74		38	136	153	38		30	50	41		

Model No.	Application Load kN	Net Weight (g)	Code No.	
TM-109-1	2.5	116	5488	
TM-109S-1		154	5518	
TM-109-2	5.0	392	5489	
TM-109S-2		394	5519	
TM-109-3	10	796	5490	
TM-109S-3		816	5520	
TM-109-4	20	1,200	5491	
TM-109S-4		1,243	5521	
TM-109-5	30	1,865	5492	
TM-109S-5		2,008	5522	

※The character 'S' on the model No. implies an eye snap with stopper.