

## Sockets, Socket sets, Accessories for manual drives



# STAHLWILLE sets of socket spanners and inserts...

The professionals in industry and the trades are under pressure to work quickly, accurately and economically. Which is why they make heavy demands on their tools. Due to the numerous technical innovations incorporated in them, STAHLWILLE ratchets and sockets make a valuable contribution to the prevention of both mistakes and injuries.

By using ratchets, adaptors and inserts made by STAHLWILLE, professional tradesmen are quite simply "making sure". It does not matter whether it is a full set of tools or individual components – users can be sure they will get top-of-the-range quality every time. This is guaranteed by adherence to the closest tolerances during production and stringently applied quality assurance measures in accordance with DIN EN ISO 9001.

The legendary reliability and precision of these tools is enhanced by a large number of user-friendly features.

- Non-slip, ergonomically manufactured 2-component handles facilitate strain-free working.
- Slim-design sockets enable access to awkward places.
- The QuickRelease system ensures full control over the joint between the ratchet, the adaptors and the sockets.
- Sculpted chemical-resistant cut-outs in special PE foam inlays prevent tools rattling and sliding around.

## Safety advantage 1

### STAHLWILLE QuickRelease system

**The problem:**

imagine what happens if a tool falls into an inaccessible place during repair or overhaul work.

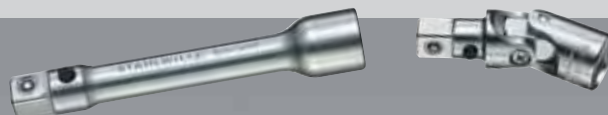
**The consequences:**

arduous, costly search and recovery, possibly involving disassembly of an aeroengine or machine.

**The solution:**

the safety lock built into the QuickRelease system prevents damage to workpieces and guarantees secure, rapid connection of all individual components to form a single combined unit. Nothing can get lost because it is not possible to inadvertently release a tool. To release a tool, it is first necessary to press the release button deliberately.

Even if you have oily or greasy hands, attaching and separating the individual components is so simple it noticeably smoothes your workflows.



## Safety advantage 2

### STAHLWILLE AS-Drive

**The problem:**

removing heavily corroded screws requires the application of considerable force. The socket slips off the head of the screw.

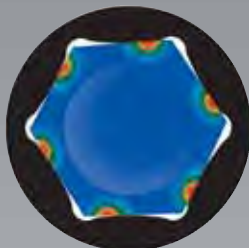
**The consequences:**

uncontrolled movements cause injuries and damage to both the workpiece and the tools.

**The solution:**

STAHLWILLE sockets are equipped with the AS-Drive\* profile. This permits high transmission of forces to the lands of nuts and bolts without damaging them. The risk of injury is minimised and the corners of the screw heads and nuts are no longer damaged.

\*AS-Drive = Anti-Slip-Drive



The tolerances on the jaw sizes and square drives of these cold-extruded sockets are as close as if they had been broached. This prevents them slipping off the heads. The consequences: minimum wear on both screws and tools.





provide guaranteed safety and efficiency.

Set No 45/14/5iQR  
in sturdy plastic case



- ① Ergonomically designed 2-component handle made of impact-resistant, skydrol resistant plastic.
- ② All metal parts are made of high-grade steel (Chrome Alloy Steel, chrome plated).
- ③ Firm seating and yet easy release of sockets and adaptors.
- ④ Wear parts can be easily replaced using sets of spares for sockets.
- ⑤ Separate pawl to switch from clockwise to anti-clockwise.



Safety advantage 3 **HPQ**

## STAHLWILLE HPQ® inserts

### The problem:

although there is hardly enough room to move, you still have to apply considerable torque to loosen a stubborn screw.

### The consequences:

many of the sockets available are useless simply because their wall thickness makes them impracticable in awkward places.

### The solution:

STAHLWILLE HPQ®\* sockets are manufactured from selected tough steel alloys. These sockets will not slip off the head of the screw, nor will they stretch when subjected to heavy loads. Their extremely thin walls and unbelievably high load capacity are simply exemplary. HPQ® sockets are free of cadmium and are therefore suitable for use on titanium alloy parts and titanium fasteners as used e.g. in the aerospace industry, where safety is a crucial factor. They meet these aerospace standards: E DIN EN 3709, E DIN EN 3710, SAE AS 954-E, S.B.A.C. AS 40605/40606, MS-33787, MIL-W-8982.

\* = High Performance Quality

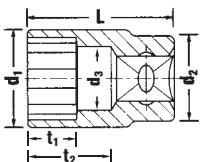


Some sets of STAHLWILLE socket spanners are supplied in sturdy plastic cases.

## 45 Sockets



metric sizes: DIN 3124/ISO 2725-1, ASME B 107.5M, E DIN EN 3709,  
American sizes: ASME B 107.1, Fed. Spec. GGG-W-641,  
SAE AS 954-E (test loads),  
HPQ® high performance steel, chrome plated.



Code	"	d <sub>1</sub> mm	d <sub>2</sub> mm	d <sub>3</sub> mm	L mm	t <sub>1</sub> mm	t <sub>2</sub> mm	ΔΔ g	
02010007	7	10.5	16.5	6	24	6	12.5	19	10
02010008	8	11.7	16.5	7	25	7	13.5	19	10
02010009	9	13	16.5	8	25	7	13.5	19	10
02010010	10	14.3	16.5	9	27	8.5	15.5	20	10
02010011	11	15.6	16.5	10	27	8.5	13.7	21	10
02010012	12	16.9	17.5	11	28	9.5	14.4	24	10
02010013	13	18	17.5	12	30	11.5	16.1	30	10
02010014	14	19.4	17.5	13	30	11.5	15.8	28	10
02010015	15	20.6	19	14	31	12.5	19.2	40	10
02010016	16	21.7	19	15	31	13.5	18.9	33	10
02010017	17	23	19	16	31	12.5	18.6	44	10
02010018	18	24.2	19	17	32	13.5	19.3	39	5
02010019	19	25.2	19	18	32	13.5	19	39	5
02010020	20	26.2	20	19	34	15.5	20.7	51	5
02010021	21	27.7	21	20	34	15.5	20.5	53	5
02010022	22	28.7	21	21	35	17	21.2	61	5
02010024	24	31.5	24	21	35	18	21.2	92	5

## 45a Sockets

Code	"	d <sub>1</sub> mm	d <sub>2</sub> mm	d <sub>3</sub> mm	L mm	t <sub>1</sub> mm	t <sub>2</sub> mm	ΔΔ g	
02410016	1/4	9.7	16.5	5.2	24	6	12.5	18	10
02410020	5/16	11.7	16.5	7	25	7	13.5	19	10
02410022	11/32	12.5	16.5	8.1	25	7	13.5	19	10
02410024	3/8	13.7	16.5	8.4	27	8.5	15.5	20	10
02410028	7/16	15.7	16.5	10	28	9.5	15.1	20	10
02410032	1/2	18	17.5	11.5	30	11.5	16.5	24	10
02410034	9/16	20.2	19	13.1	31	12.7	16.8	28	10
02410035	19/32	20.6	19	14	31	13	19.2	36	5
02410036	5/8	21.7	19	15	31	13.5	18.9	31	5
02410038	11/16	23.4	19	16.3	32	14.7	19.5	34	5
02410040	3/4	25.2	19	18	32	15.9	19	41	5
02410042	13/16	27.2	20.5	19.4	34	16.5	20.5	52	5
02410044	7/8	28.7	22	21	35	18	21	59	5
02410046	15/16	31.5	24	22.6	35	18.5	20.7	95	5
02410048	1	33	25.5	24.2	35	18.5	20.2	97	5

## STAHLWILLE HPQ® inserts

STAHLWILLE HPQ®\* sockets are manufactured from selected tough steel alloys. The result: they are extremely durable. HPQ® sockets are free of cadmium and are therefore suitable for use on titanium alloy parts and titanium fasteners as used e.g. in the aerospace industry, where safety is a crucial factor.

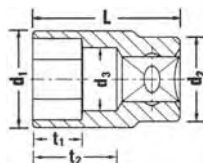


\*High Performance Quality

## 456 Sockets



DIN 3124/ISO 2725-1, ASME B 107.5M,  
E DIN EN 3709 (test loads),  
HPQ® high performance steel, chrome plated.

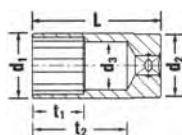


Code	"	d <sub>1</sub> mm	d <sub>2</sub> mm	d <sub>3</sub> mm	L mm	t <sub>1</sub> mm	t <sub>2</sub> mm	ΔΔ g	
02110007	7	10.5	16.5	6	24	6	12.5	19	10
02110008	8	11.7	16.5	7	25	7	13.5	19	10
02110009	9	13	16.5	8	25	7	13.5	20	10
02110010	10	14.3	16.5	9	27	8.5	15.5	20	10
02110011	11	15.6	16.5	10	27	8.5	13.7	21	10
02110012	12	16.9	17.5	11	28	9.5	14.4	24	10
02110013	13	18	17.5	12	30	11.5	16.1	25	10
02110014	14	19.4	17.5	13	30	11.5	15.8	29	10
02110015	15	20.6	19	14	31	12.5	19.2	30	10
02110016	16	21.7	19	15	31	13.5	18.9	34	10
02110017	17	23	19	16	31	12.5	18.6	45	10
02110018	18	24.2	19	17	32	13.5	19.3	42	10
02110019	19	25.2	19.6	18	32	13.5	19	43	10
02110020	20	26.2	20.5	19	34	15.5	20.7	53	10
02110021	21	27.7	21.8	20	34	15.5	20.5	59	10
02110022	22	28.7	21	21	35	17	21.2	59	10

## 460a Sockets



SAE AS 954-E, S.B.A.C. AS 40610/40611, ASME B 107.1,  
HPQ® high performance steel, chrome plated.



Code	"	d <sub>1</sub> mm	d <sub>2</sub> mm	d <sub>3</sub> mm	L mm	t <sub>1</sub> mm	t <sub>2</sub> mm	ΔΔ g	
02620016	1/4	9.9	16.5	5.2	32	7	20.5	21	5
02620020	5/16	11.5	16.5	7	32	8.5	20.5	22	5
02620024	3/8	13.7	16.5	8.5	38	9	26.5	29	5
02620028	7/16	15.7	16.5	10	38	11	24.5	33	5
02620032	1/2	17.5	17.8	11.5	44	12	30	44	5

## STAHLWILLE AS-Drive

STAHLWILLE sockets are equipped with the AS-Drive® profile: this permits high transmission of forces to the lands of nuts and bolts without damaging them. No longer will you have to worry about stripping the corners off nuts and bolts.

\*Anti-Slip Drive

