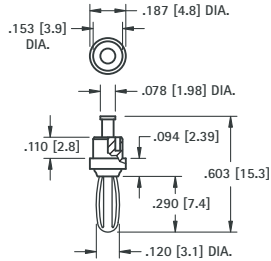


# MINIATURE PLUGS

## SWAGE MOUNT



.120 (3.0)  
Plug



CAT. NO. 452

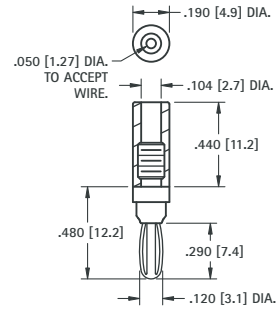
**MATERIAL:**  
**Spring:** Beryllium Copper  
**Body:** Brass, Silver Plate



.120 (3.0)  
Plug

CAT. NO.	COLOR
6076	RED
6077	BLACK
451	NONE

## SOLDER CONNECTION



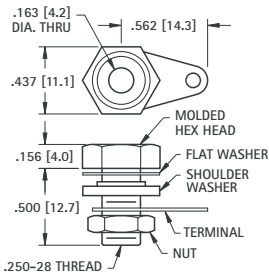
**MATERIAL:**  
**Spring:** Beryllium Copper, Nickel Plate  
**Body:** Brass, Nickel Plate  
**Handle:** Nylon

# BANANA JACKS

## INSULATED SOLDER CONNECTION



Accepts  
.175 (4.5)  
Plug



Supplied with hardware  
Unassembled

CAT. NO.	HEAD COLOR
6093	RED
6094	BLACK

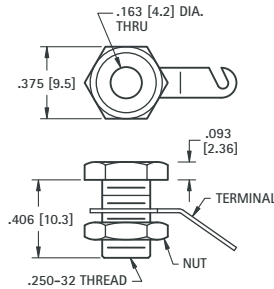
**MATERIAL:**  
**Body:** Brass, Nickel Plate  
**Terminal:** Copper, Tinned  
**Hex Head:** Phenolic

## NON-INSULATED RECESSED HEAD

Fits panel up to .312 (7.9)



Accepts  
.175 (4.5)  
Plug



Supplied with nut and lug.  
Unassembled

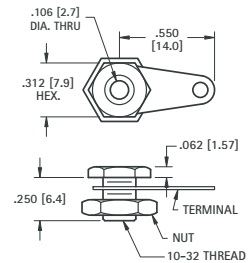
CAT. NO. 6095

**MATERIAL:**  
**Current Rating:** 15 Amps  
**Body:** Brass, Nickel Plate  
**Terminal:** Brass, Tin Plate

## NON-INSULATED MINIATURE JACK



Accepts  
.120 (3.0)  
Plug



Supplied with lug and nut.  
Unassembled

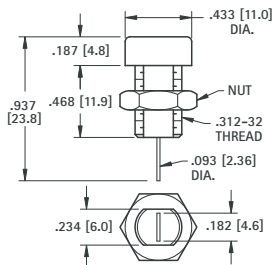
CAT. NO. 6090

**MATERIAL:**  
**Body:** Brass, Nickel Plate  
**Terminal:** Copper, Tinned

## FULLY INSULATED



Accepts  
.175 (4.5)  
Plug



CAT. NO.	COLOR
6091	RED
6092	BLACK

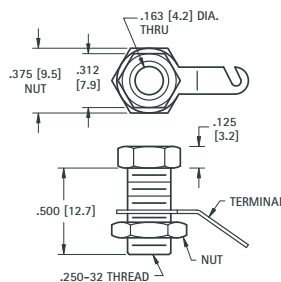
**MATERIAL:**  
**Body:** Nylon  
**Contact:** Brass, Tin Plate

## NON-INSULATED STANDARD HEAD

Fits panel up to .375 (9.6)



Accepts  
.175 (4.5)  
Plug



Supplied with nut and lug.  
Unassembled

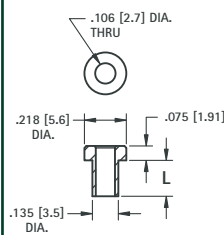
CAT. NO. 6096

**MATERIAL:**  
**Current Rating:** 15 Amps  
**Body:** Brass, Nickel Plate  
**Terminal:** Brass, Tin Plate

## NON-INSULATED

### MINIATURE

Accepts  
.120 (3.0)  
Plug

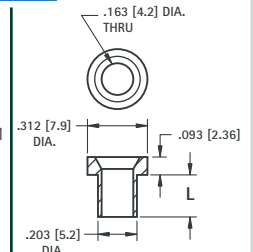


**MATERIAL:**  
Brass, Tin Plate

CAT. NO.	L
476-2	.125 (3.2)
476-3	.165 (4.2)
476-4	.187 (4.7)

### STANDARD

Accepts  
.175 (4.5)  
Plug



**MATERIAL:**  
Brass, Nickel Plate

CAT. NO.	L
575-4	.218 (5.5)
575-6	.265 (6.7)
575-8	.350 (8.9)

# Mouser Electronics

Authorized Distributor

Click to View Pricing, Inventory, Delivery & Lifecycle Information:

[Keystone Electronics:](#)

[6076](#) [6077](#)