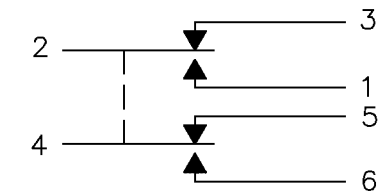
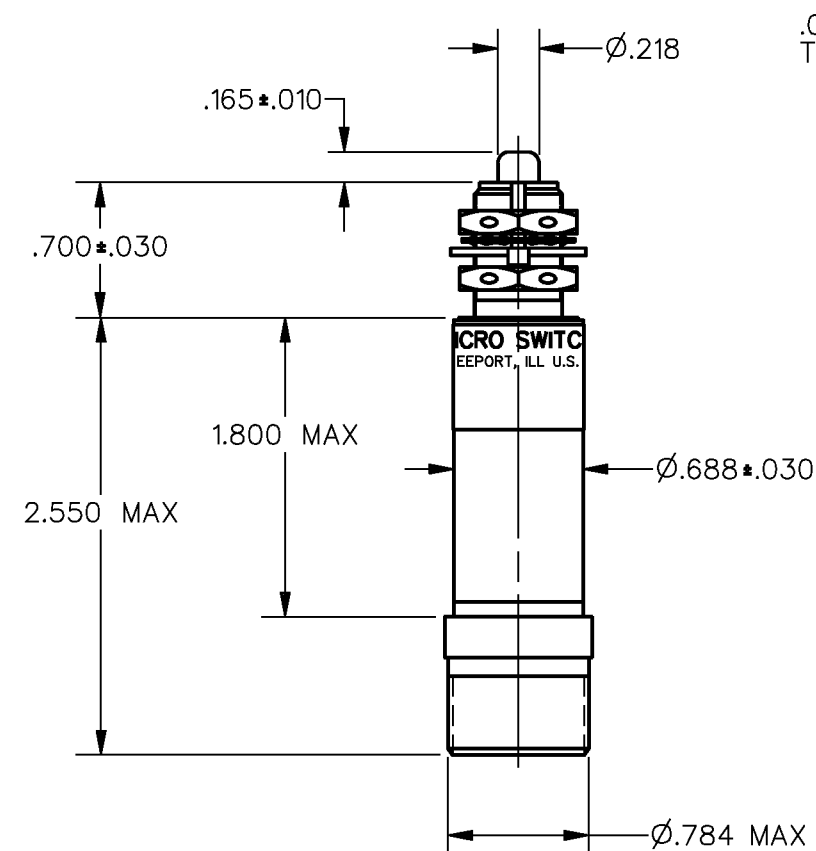
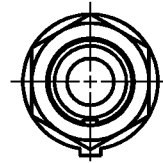


FED. MFG. CODE 91929

CATALOG LISTING  
602HE5-RB1

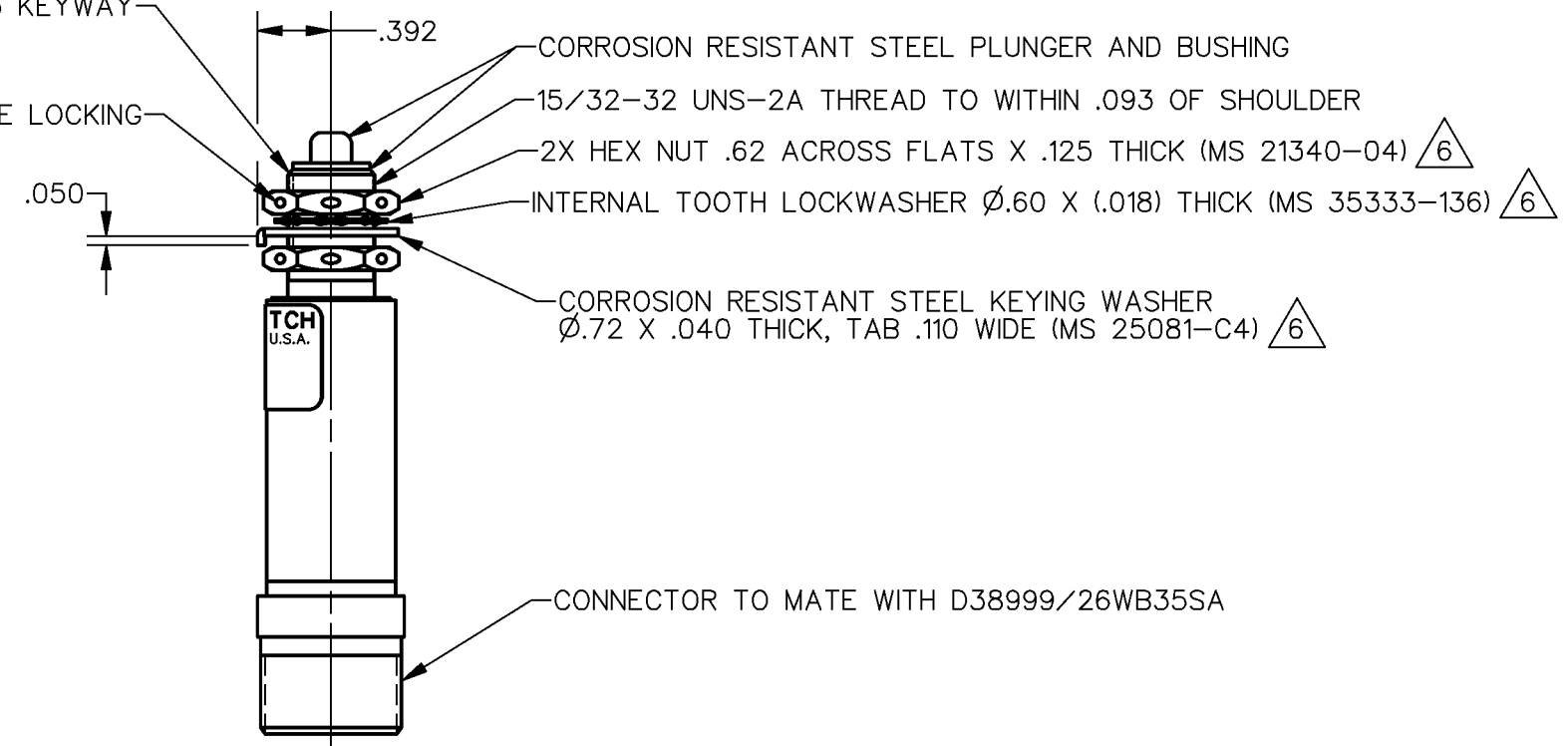


### CIRCUIT DIAGRAM



.072±.004 WIDE X ▽ .031±.003 KEYWAY-  
TO WITHIN .250 OF SHOULDER

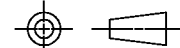
Ø.047 HOLE FOR WIRE LOCKING-



- 1 - CORROSION RESISTANT STEEL ENCLOSURE
- 2 - SWITCH SEALED PER MIL-S-8805 SYMBOL 5 ( $1 \times 10^{-8}$  ATM CM<sup>3</sup>/S)
- 3 - COINCIDENCE OF OPERATING AND RELEASING POINTS:  
.010 INCH OF PLUNGER TRAVEL
- 4 - CIRCUIT DIAGRAM AND CATALOG LISTING ARE SHOWN ON NAMEPLATE
- 5 - FOR OPERATION IN TEMPERATURE RANGE OF -65° F (-55° C) TO  
+257° F (+125° C)
- 6 - HARDWARE MAY BE PACKAGED UNASSEMBLED PER MIL-S-8805
- 7 - WEIGHT OF MOUNTING HARDWARE NOT INCLUDED. MOUNTING HARDWARE  
WEIGHT EQUALS .3 OZ MAX
- 8 - MECHANICAL LIFE - 50,000 OPERATIONS REFERENCE  
ELECTRICAL LIFE - 25,000 OPERATIONS REFERENCE
- 9 - DIELECTRIC STRENGTH: OPEN CIRCUIT TERMINALS - 800 VRMS  
TERMINAL TO CASE - 1000 VRMS

THIS DRAWING COVERS A PROPRIETARY ITEM AND IS THE PROPERTY OF MICRO SWITCH, A DIVISION OF HONEYWELL. THIS DRAWING IS NOT TO BE COPIED OR USED WITHOUT THE APPROVAL OF MICRO SWITCH

### THIRD ANGLE PROJECTION



SCALE	FULL
-------	------

DO NOT SCALE PRINT

## CHARACTERISTICS

### ELECTRICAL DATA

CONTACT ARRANGEMENT  
2X SPD T

OPERATING FORCE ———— 10 LB MAX  
RELEASE FORCE ———— 1 LB MIN  
PRETRAVEL ———— .020—.030  
DIFFERENTIAL TRAVEL ———.020 MAX  
OVERTRAVEL ———— .125 MIN  
FULL OVERTRAVEL FORCE ——— 30 LB MAX

100

28 VDC

---

70,000 FT

RES

---

4

---

4

LAMP
------

---

2

---

2

WEIGHT 3.0 OZ MAX



ANSI Y14.5M-1982 APPLIES

ISSUE	<b>M</b>	CATALOG LISTING	602HE5-RB1	PAGE 1 OF 1	RELEASE NO. PR-21990	REPLACES

REVISIONS		
A	PR-21990	
K	D	R
6	FEB	96

DDM/CAD  
DRAWN

# Mouser Electronics

Authorized Distributor

Click to View Pricing, Inventory, Delivery & Lifecycle Information:

[Honeywell:](#)

[602HE5-RB1](#)