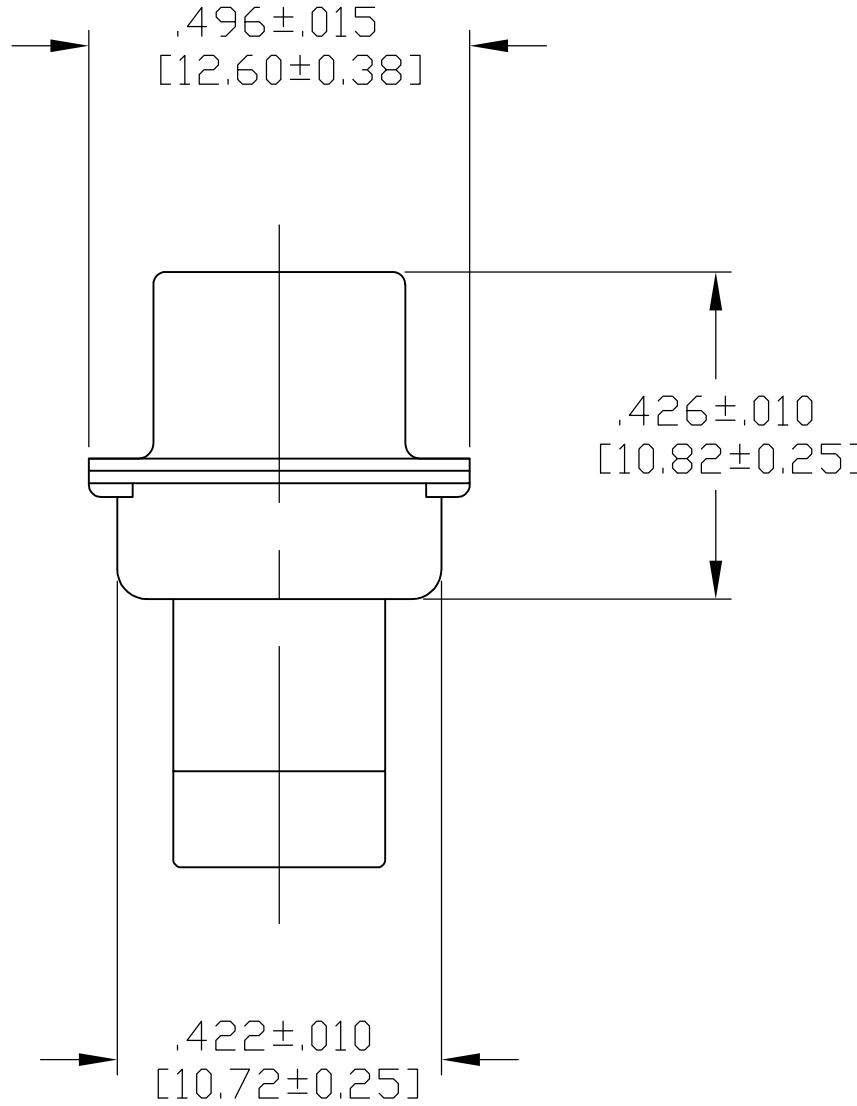
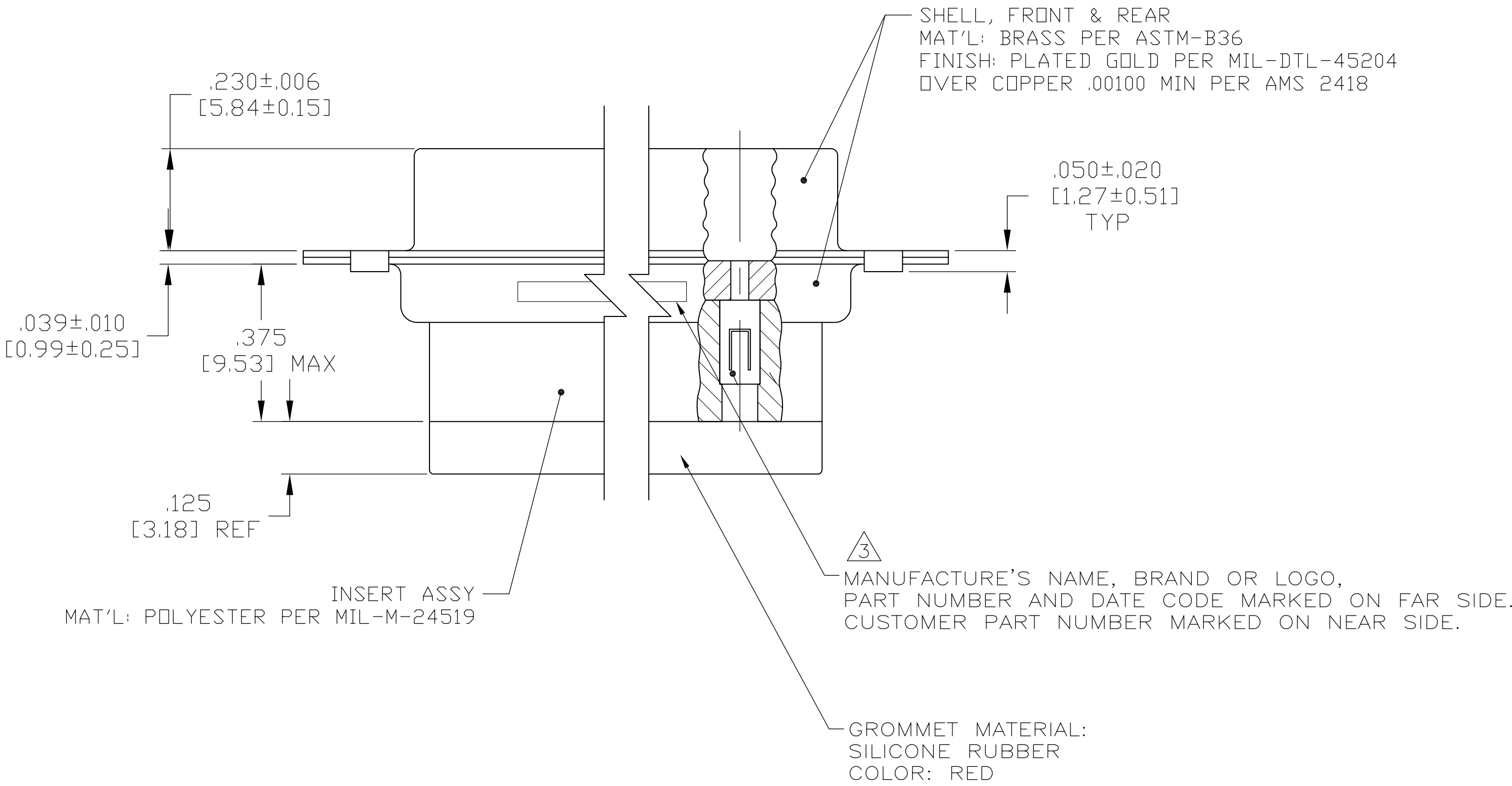


- THIS CONNECTOR ASSEMBLY IS SUPPLIED WITH Be Cu CONTACT RETENTION CLIPS INSTALLED IN THE INSERT ASSEMBLY.
 - THIS CONNECTOR ASSEMBLY MATES WITH ANY PLUG CONNECTOR WITH THE SAME INSERT ARRANGEMENT AND DIMENSIONAL REQUIREMENTS PER MIL-C-24308.
 - MARKED WITH .047 [1.19]-.062 [1.57] HIGH CHARACTERS. FAR SIDE REFERS TO THE WIDE SIDE OF THE KEYSTONE. NEAR SIDE REFERS TO THE NARROW SIDE OF THE KEYSTONE.
 - MAXIMUM WIRE INSULATION TO BE USED WITH THIS CONNECTOR ASSEMBLY IS .068 [1.73] DIAMETER.
- SPECIAL REQUIREMENTS PER BOEING 1A01 DOCUMENT.
- BUILT TO ORDER, NO INVENTORY OF THIS PART NUMBER IS TO BE KEPT. SINGLE LOT DATE CODE REQUIRED.



OBSOLETE	<div>6</div> <div>7</div>	1A01-028PHW	1-211640-1
	--	---	211640-4
	<div>7</div>	2A014-033V-001	211640-2
	<div>6</div> <div>7</div>	1A01-028PHA	211640-1
REMARKS		CUSTOMER MARKING	PART NUMBER

THIS DRAWING IS A CONTROLLED DOCUMENT.

DWN
C.C.THOMAS
CHK
R. LEASE
APVD
R. LEASE

4-9-09
4-9-09
4-9-09

DIMENSIONS:
INCHES

TOLERANCES UNLESS OTHERWISE SPECIFIED:

0 PLC ± -
1 PLC ± -
2 PLC ± -
3 PLC ± .005 [0.13]
4 PLC ± -
ANGLES ± -

MATERIAL
SEE CALLOUTS

FINISH
SEE CALLOUTS

WEIGHT
-

CUSTOMER DRAWING

DWN
C.C.THOMAS
CHK
R. LEASE
APVD
R. LEASE

4-9-09
4-9-09
4-9-09

NAME
PLUG ASSY.,AMPLIMITE,25 POSN.,SIZE 3,
SERIES 109 WITH GROMMET, NON-MAGNETIC

SIZE
A1

CAGE CODE
00779

DRAWING NO
211640

RESTRICTED TO
-

SCALE
4:1

SHEET
1

OF
1

REV
H