

Customer Information Sheet

DRAWING No.: PI3-XX23

SHEET 2 OF 2

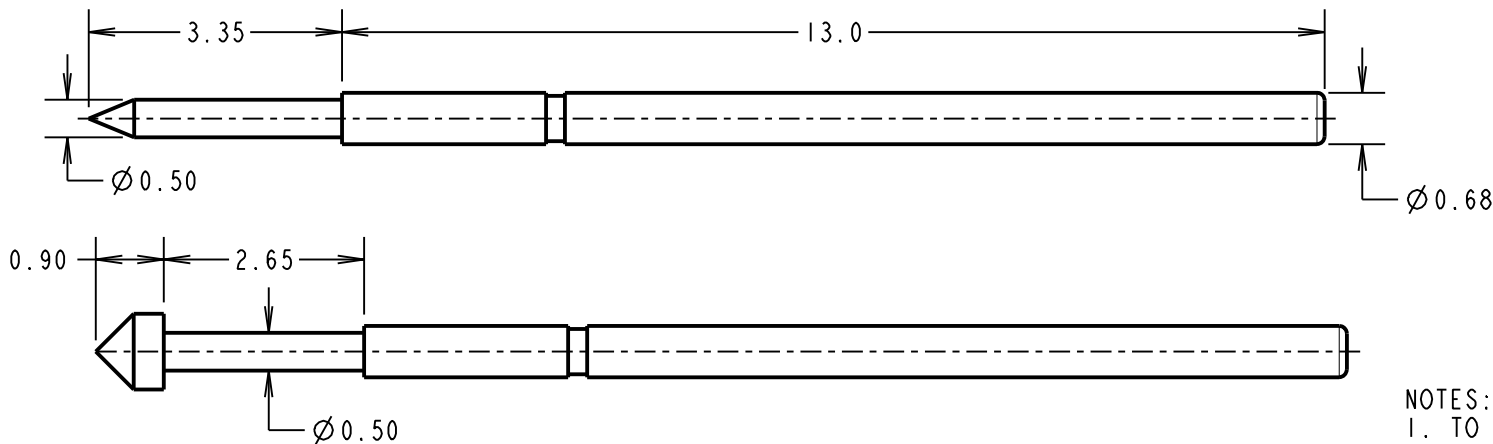
IF IN DOUBT - ASK

(C)

NOT TO SCALE

THIRD ANGLE PROJECTION

ALL DIMENSIONS IN mm



ORDER CODE:

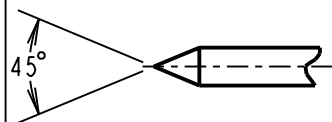
PI3-XX23

PROBE HEAD
VARIANT (SEE BELOW)

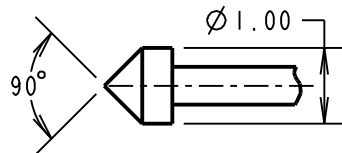
NOTES:

1. TO BE USED WITH SLEEVE S13-503.
2. SUITABLE FOR A MINIMUM DISTANCE BETWEEN CENTRES OF 1.27mm.

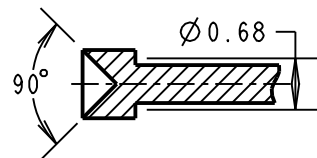
PROBE HEAD VARIANTS



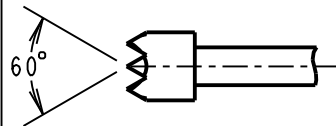
SPEAR HEAD
PI3-0123



CONVEX HEAD
PI3-2123



CONCAVE HEAD
PI3-1123



SERRATED HEAD
PI3-4023

SPECIFICATIONS:

MATERIAL:

PLUNGER = BERYLLIUM COPPER
BARREL = PHOSPHOR BRONZE
SPRING = MUSIC WIRE

FINISH:

PLUNGER, BARREL AND SPRING = GOLD

ELECTRICAL:

CURRENT RATING = 3A
CONTACT RESISTANCE = 30 MILLIOHMS

MECHANICAL:

DURABILITY = 1,000,000 CYCLES
FULL TRAVEL = 2.65mm

SPRING FORCES:

AT FULL TRAVEL = $1.18N \pm 0.24N$ (120G $\pm 20\%$)
AT 2/3 TRAVEL = $0.88N \pm 0.18N$ (90g $\pm 20\%$)

ENVIRONMENTAL:

OPERATING TEMPERATURE = -40°C TO +85°C

SM	5	09.03.11	11173
NAME	ISS.	DATE	C/NOTE
APPROVED: S. MCCULLAGH			
CHECKED: R. ADDE			
DRAWN: W.J. BOURNE			
CUSTOMER REF.:			
ASSEMBLY DRG:			

HARWIN

HARWIN USA TEL: 603 893 5376 FAX: 603 893 5396 mis@harwin.com	HARWIN Europe (UK) TEL: 023 9231 4545 FAX: 023 9231 4590 mis@harwin.co.uk	HARWIN Asia TEL: +65 6 779 4909 FAX: +65 6 779 3868 mis@harwin.com.sg
--	--	--

THIS DRAWING AND ANY INFORMATION OR DESCRIPTIVE MATTER SET OUT HEREON ARE CONFIDENTIAL AND COPYRIGHT PROPERTY OF THE HARWIN GROUP AND MUST NOT BE DISCLOSED, LOANED, COPIED OR USED FOR MANUFACTURING, TENDERING OR FOR ANY OTHER PURPOSE WITHOUT THEIR WRITTEN PERMISSION.

TOLERANCES

X. = $\pm 1mm$
X.X = $\pm 0.25mm$
X.XX = $\pm 0.10mm$
X.XXX = $\pm 0.01mm$

ANGLES = $\pm 5^\circ$

UNLESS STATED

MATERIAL:

SEE ABOVE

FINISH:

SEE ABOVE

S/AREA:

mm²

TITLE:

1.27mm MIN. CENTRE
TWO-PIECE SPRING PROBE

DRAWING NUMBER:

PI3-XX23

SHT
2 OF 2

Mouser Electronics

Authorized Distributor

Click to View Pricing, Inventory, Delivery & Lifecycle Information:

Harwin:

[P13-4023](#) [P13-0123](#) [P13-1123](#) [P13-2123](#)