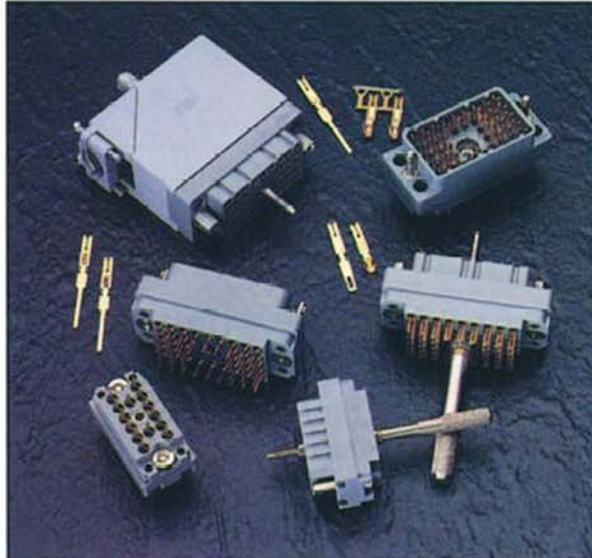




## SERIES 519



### FEATURES

.150 (3.81) Contact Spacing x .150 (3.81) Row Spacing  
Suitable For Automatic Wire Wrapping

Plug and Receptacle in 14 or 36 Contact Sizes

Edacon Hermaphroditic Contact Mating Design

Contact Termination Options include Crimp, P.C. Tail,  
Wire Hole and Wire Wrap

Mating and Unmating Simplified with use of Actuating  
Screws

Optional Covers with Side or Top Entry Cable Clamp in  
Plastic or Metal Material Available for all Connector Sizes

Versatile Metal Cover Design permits Assembly or  
Disassembly After Cabling is Complete plus Cable Entry  
Style Flexibility

Actuating Screws, Locknuts, Polarizing Hardware, Covers  
and Contacts Suitable for either Plug or Receptacle

Polarizing Hardware Adjustable for 288 Mating  
Combinations

Tools Available for Contact Installation, Removal and  
Crimping and Polarizing Changes

### SPECIFICATIONS

Insulator Material: Polycarbonate: Colour: Grey

Contact Material: Phosphor Bronze Alloy CA-510

Contact Plating: Gold over Nickel

Cover Material: Polycarbonate, Colour: Green, or Die-Cast  
Zinc, Finished with Grey Enamel Paint

For Additional Specifications, Crimp Characteristics and  
Polarizing Codes Refer to 516 Series

### Example Part Number 519 - 036 - 500 - 3 0 1

Series \_\_\_\_\_  
Total Number of Contacts \_\_\_\_\_  
Contact Code \_\_\_\_\_  
Connector Style \_\_\_\_\_  
Cover Code \_\_\_\_\_  
Hardware Code \_\_\_\_\_

#### Series 519

Total Number of Contacts 014, 036

#### Contact Code

See 516 Series for Available Contact Options, "G" Dimension and information  
Regarding Ordering Contacts Separately

#### Connector Style

Style
3 Plug
4 Receptacle

#### Cover Code

Description
0 No Cover Assembled
1 Plastic Cover, Top Entry Standard Clamp
2 Plastic Cover, Side Entry Standard Clamp
3 Plastic Cover, Top Entry Large Clamp
4 Plastic Cover, Side Entry Large Clamp
5 Metal Cover, Side Entry
6 Metal Cover, Top Entry

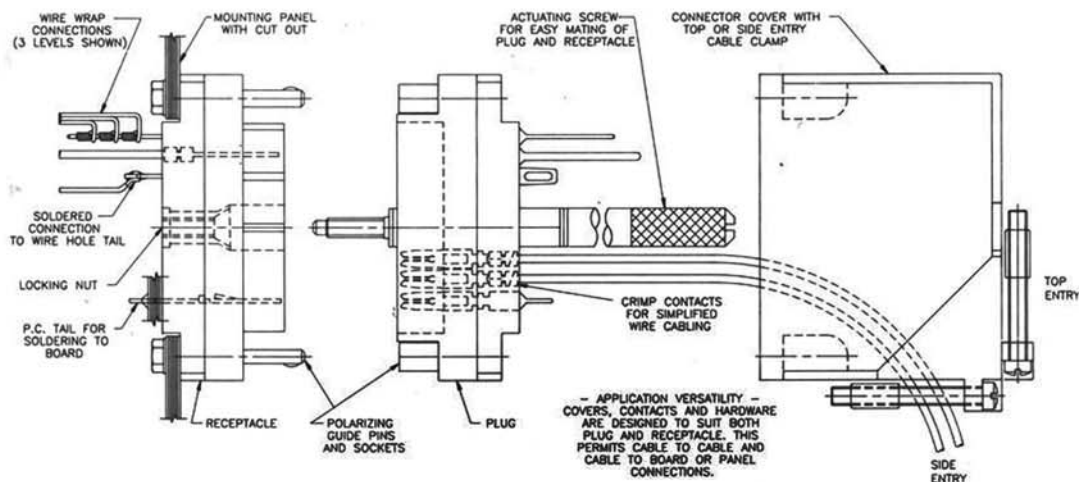
#### Hardware Code

Description
0 No Hardware Assembled
1 Actuating Screw and Polarizing Hardware
2 Locknut and Polarizing Hardware
5 Actuating Screw with No Polarizing Hardware
6 Locknut with No Polarizing Hardware

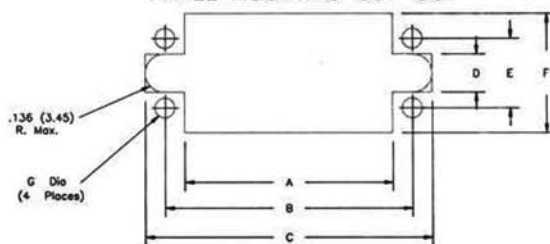
#### Ordering Code Notes

- 1) The 14 pin connector cover will not accept the length of the wire wrap contacts
- 2) Plastic covers with large clamps are only available for the 36 pin size connectors
- 3) Metal covers with side entry may be converted to top entry by removing side plate and changing clamp orientation
- 4) Covers may be ordered separately
- 5) Insulator design prevents improper mating of individual plug and receptacle. Polarizing hardware enables specific plug and receptacle mating combinations

### RACK AND PANEL CONNECTORS



### 516 / 519 SERIES CONNECTOR PANEL MOUNTING CUT-OUT



### 516 SERIES CONNECTOR CUT OUTS

CONNECTOR SIZE	A	B	C	D	E	F	G Dia
20 pin	.960 (24.38)	1.126 (28.6)	1.270 (32.26)	.260 (6.60)	.410 (10.41)	.640 (16.26)	.104 (2.64)
38 pin	1.420 (36.07)	1.688 (42.87)	1.958 (49.73)	.260 (6.60)	.468 (11.89)	.816 (20.73)	.136 (3.45)
56 pin	1.940 (49.28)	2.280 (57.91)	2.550 (64.77)	.260 (6.60)	.468 (11.89)	.816 (20.73)	.136 (3.45)
90 pin	2.050 (52.07)	2.282 (57.96)	2.675 (67.95)	.300 (7.62)	.765 (19.43)	1.120 (36.07)	.136 (3.45)
120 pin	2.050 (52.07)	2.375 (60.32)	2.675 (67.95)	.300 (7.62)	.875 (22.22)	1.420 (36.07)	.156 (3.96)

### 519 SERIES CONNECTOR CUT OUTS

CONNECTOR SIZE	A	B	C	D	E	F	G Dia
14 pin	.960 (24.38)	1.126 (28.6)	1.270 (32.26)	.260 (6.60)	.410 (10.41)	.640 (16.26)	.104 (2.64)
36 pin	1.420 (36.07)	1.688 (42.87)	1.958 (49.73)	.260 (6.60)	.468 (11.89)	.816 (20.73)	.136 (3.45)

# Mouser Electronics

Authorized Distributor

Click to View Pricing, Inventory, Delivery & Lifecycle Information:

EDAC:

[519-014-000-301](#) [519-014-000-401](#) [519-014-000-402](#) [519-036-000-301](#) [519-036-000-401](#) [519-036-000-402](#) [519-036-000-302](#)