

**Ordering number** CC13052_ZOWIE-MINI

Family	Zowie	FWHM	24+60 degrees
Type	Lens	Efficiency	(simulated) 0 %
LED	XP-G	cd/lm	-
Color	Clear	Gerber File	Available
Diameter	14.83 mm		
Height	11.46 mm		
Style	Round		
Optic Material	PMMA		
Holder Material	-		
Fastening	-		
Status	Ready		

Zoomable Optic. The Widest & Narrowest beam angles separat

NOTE: The typical divergence will be changed by different color, chip size and chip position tolerance. The typical total divergence is the full angle measured where the luminous intensity is half of the peak value.



PRODUCT DATASHEET

Zowie series

last update 27/9/2012

GENERAL INFORMATION

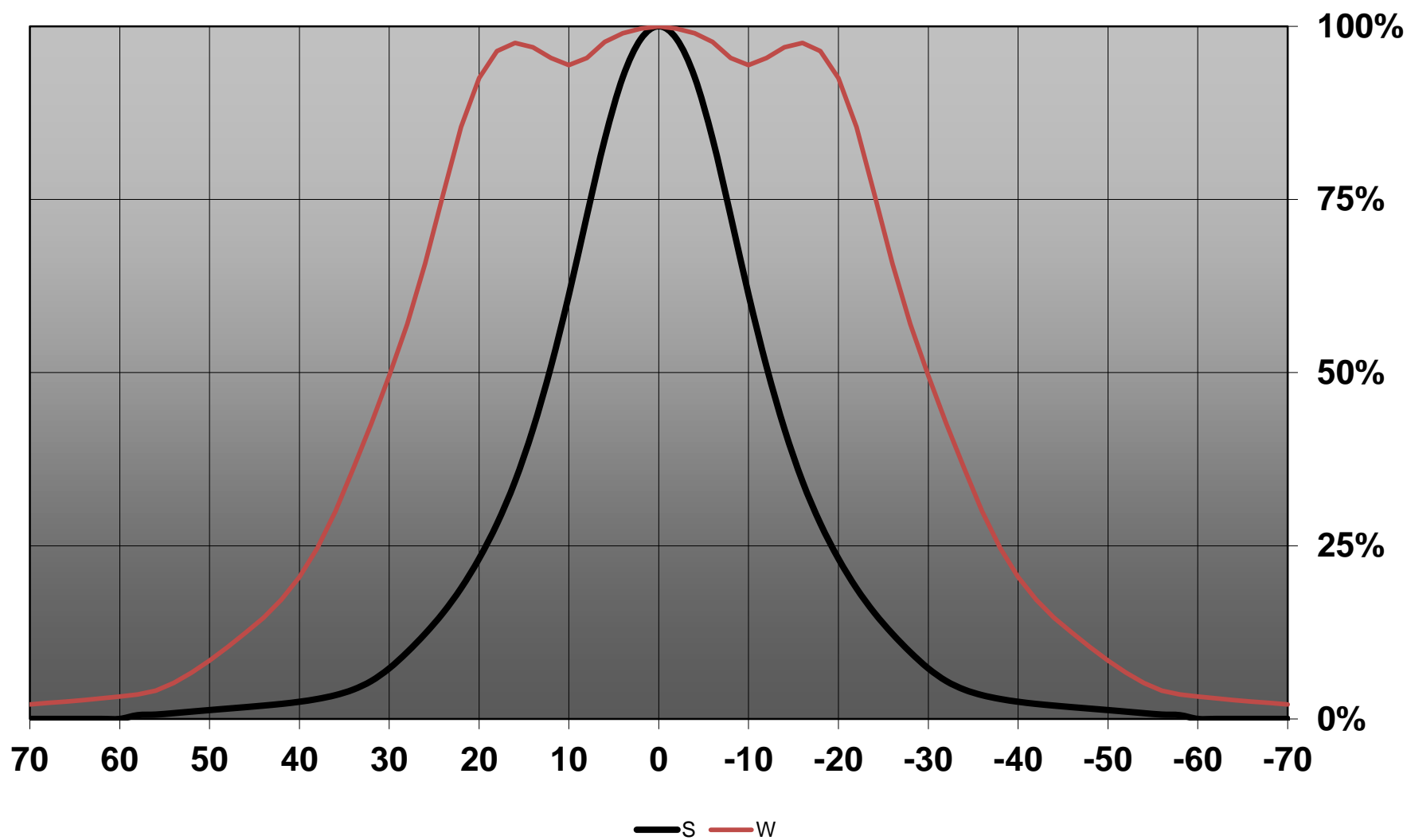
- Product series especially designed & optimized for XP-G series of LEDs.
- Special care taken to make light distribution as uniform as possible.
- Lens material optical grade PMMA with high UV and temperature resistance. Allows use of high current and temperature conditions.

Please find more information about used material from below:

http://ledil.fi/sites/default/files/Documents/Technical/Material/PMMA%20N%20UL94_Yellow%20Card.pdf

<http://ledil.fi/sites/default/files/Documents/Technical/Material/PMMA%20N%20PLEXIGLAS-Datasheet.pdf>

Relative intensity of CC13052_ZOWIE-MINI-XPG



D

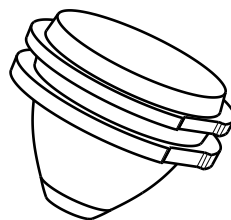
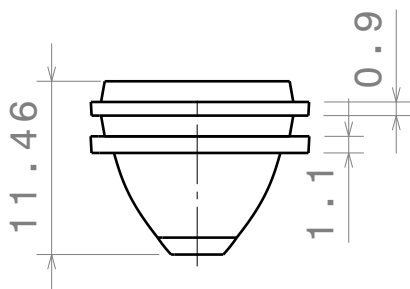
C

B

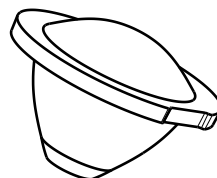
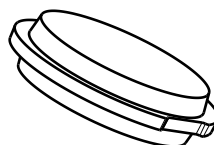
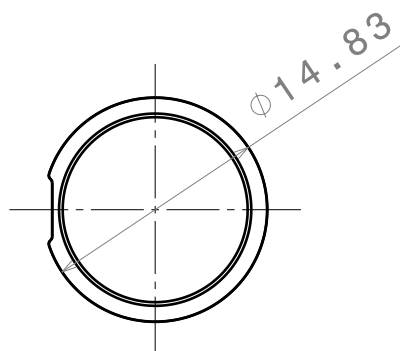
A

INDEX	PART NO	DESCRIPTION	MATERIAL
1			

1



Spot position
Lens distance = 0mm



Tolerances if not otherwise shown:
According to DIN ISO 2768-1
Linear measures:
Up to 30mm class F, otherwise class M.

According to DIN ISO 2768-2
Form and position:
class K

Raw material: PMMA

Wide position
Lens distance = 11mm

This drawing is our property.
It can't be reproduced
or communicated without
our written agreement.

LEDiL

Ledil Oy
Salorankatu 10
FIN 24240 SALO
Finland

DRAWING TITLE

Part Drawing

DRAWN BY

DATE

pl

9/20/2012

DATA SHEET ZOWIE-MINI

CHECKED BY

DATE

-

-

SIZE

PART NUMBER

A4

CC13052

REV

001

DESIGNED BY

DATE

-

-

SCALE

2:1

WEIGHT

0.00108kg

SHEET

1/1

D

A