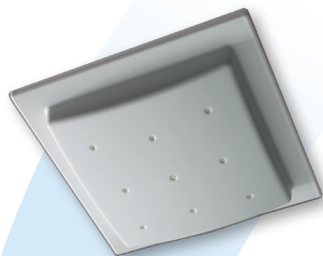


Single-Port Multiband, Multimode Ceiling Mount Antenna



SQUINT™ SINGLE-PORT MULTI-ANTENNA

The SQ82183P antenna is based on Laird Technologies' high-efficiency MicroAir design technique and offers system integrators multiband, multimode performance and capability in one easy-to-install, low-profile single-port design.

Omni-directional energy distribution from a ceiling mount location is a highlight of this uniform and symmetrical antenna. With excellent gain and pattern characteristics, the SQ82183P covers the PCS band from 1850-1990 MHz, Cellular 800, as well as the 2400-2500 MHz 802.11b/g WLAN band.

A perfect choice for in the optimization of gain and pattern performance over a broad range of frequencies, the antenna also satisfies aesthetic requirements of a site owner. Ceiling mount hardware and N female connector are standard, though options are available based upon requirements.

Typical applications include multimode, multiband combination systems where Cellular 800, PCS, and WLAN service must be provided in the same location. A key advantage of the SQ82183P design is its highly symmetrical distribution of energy; it allows a system integrator to support load balancing the WLAN, 802.11b/g system. Load balancing is an important tool in designing high performance, high data rate contemporary WLAN systems.

FEATURES

- Optimized for use with RF distribution and WLAN systems
- Coax length and connector types can be modified
- Radome can be color matched to environment

MARKETS

- Industrial and educational complexes
- Healthcare centers and office buildings
- Shopping malls
- Transportation centers

global solutions: local support™

Americas: +1.847.839.6907
IAS-AmericasEastSales@lairdtech.com

Europe: +1.32.80.7866.12
IAS-EUSales@lairdtech.com

Asia: +1.65.6.243.8022
IAS-AsiaSales@lairdtech.com

www.lairdtech.com

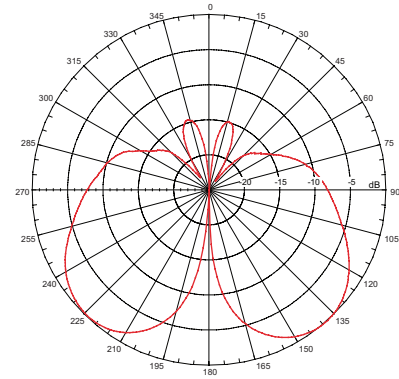
SQ82183P

Single-Port Multiband, Multimode Ceiling Mount Antenna

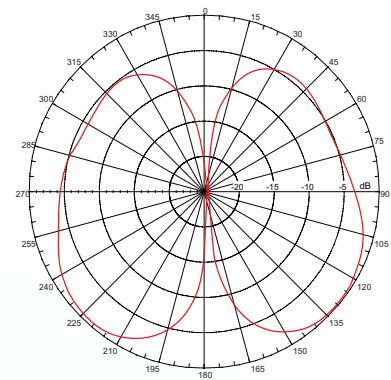
PARAMETER	SPECIFICATION
Frequency (MHz)	824-896, 1850-1990, 2400-2500
Impedance (Ohms)	50
Gain (dBi)	3.0
E-Plane (3 dB beamwidth)	55° average
H-Plane (3 dB beamwidth)	Omnidirectional
Weight lb. (kg)	1.4 (0.64)
Mounting Style	Ceiling
Dimensions in.(cm)	10.1" x 10.1" x 1.5" (25.7 x 25.7 x 3.8)
Enclosure	PVC acrylic
Power (Watts)	50
RF Connector	Type N (f)

Pattern data represents a ceiling mounted antenna.

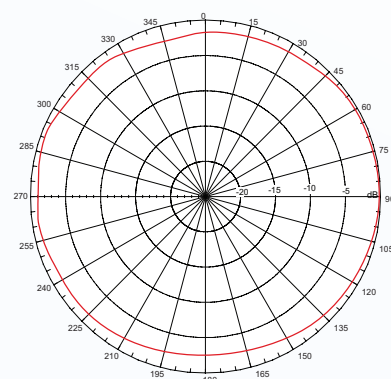
SQ82183P 2.45 GHz E-Plane



SQ82183P 824 MHz E-Plane



SQ82183P 824 MHz H-Plane



global solutions: local support™

Americas: +1.847.839.6907
IAS-AmericasEastSales@lairdtech.com

Europe: +1.32.80.7866.12
IAS-EUSales@lairdtech.com

Asia: +1.65.6.243.8022
IAS-AsiaSales@lairdtech.com

www.lairdtech.com

ANT-DS-SQ82183P 0509

Any information furnished by Laird Technologies and its agents is believed to be accurate and reliable. Responsibility for the use and application of Laird Technologies materials rests with the end user since Laird Technologies and its agents cannot be aware of all potential uses. Laird Technologies makes no warranties as to the fitness, merchantability, or suitability of any Laird Technologies materials or products for any specific or general uses. Laird Technologies shall not be liable for incidental or consequential damages of any kind. All Laird Technologies products are sold pursuant to the Laird Technologies terms and conditions of sale in effect from time to time, a copy of which will be furnished upon request. All Laird Technologies products are sold pursuant to the Laird Technologies terms and conditions of sale in effect from time to time, a copy of which will be furnished upon request.

© 2009 All Rights Reserved. Laird Technologies is a registered trademark of Laird Technologies, Inc.