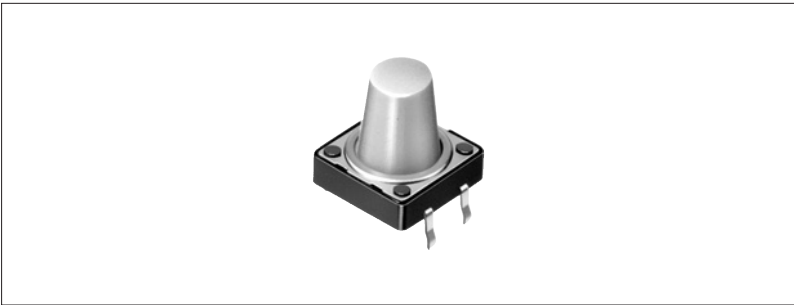


12×12mm Long Stem TACT Switch (Snap-in)

SKHK Series

Long stem type with height of 12mm for a stable operational feel.

Power
Push
Slide
Rotary
Encoders



Detector
Dual-in-line
Package Type
Multi Control
Devices

TACT
Custom-
Products

Features

- Snap-in type, which can be directly mounted on PC board.
- Some of output terminals can be also used as jumper leads, thus making circuit design easy.

Applications

- For operating various electronic devices such as audio devices, office equipments, communication devices, measuring instruments, TV, video recorders, etc.

Products Line

Products No.	Operating force	Operating direction	Travel (mm)	Rating (max.)	Operating life (5mA 5V DC)	Initial contact resistance	Stem color	Minimum packing unit (pcs.)
SKHKAAA010	1.27N	Vertical	0.3	50mA 12V DC	500,000 cycles	100mΩ max.	Light gray	1,000

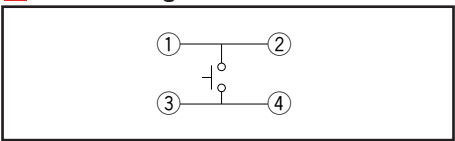
Sharp
Feeling
Soft
Feeling
Snap-in
Type
Surface
Mount Type
Radial
Type

Dimensions

Unit:mm

Style	PC board mounting hole dimensions (Viewed from switch mounting face)

Circuit Diagram



Note

Using a 1.6mm thick PC board is recommended.

For detailed specifications, see P.415
For soldering conditions, see P.416

Products Specifications

Series		Sharp feeling type	Soft feeling type
Items			
Operating temperature range		-20°C to +70°C	
		-30°C to +85°C SKRM/RW	-30°C to +80°C SKPG
		-30°C to +90°C SKRA/RG/RP	-40°C to +90°C SKPF/PL/PM/PN
Rating (max.)		50mA 12V DC SKRP : 50mA 16V DC	5mA 12V DC SKPL/PM/PN : 50mA 16V DC
Rating (min.)		10 μ A 1V DC	
Electrical performance	Insulation resistance	100M Ω min. 100V DC SKEY/PD : 50M Ω min. 100V DC	
	Voltage proof	250V AC for 1 min. SKRB/RH/RM/RW/RR/EY/PD : 100V AC for 1min.	
Durability	Vibration	10 to 55 to 10Hz/min., the amplitude is 1.5mm for all the frequencies, in the 3 direction of X, Y and Z for 2 hours respectively	
	Lifetime	Shall be in accordance with individual specifications.	
Environmental performance	Cold	-30 \pm 2°C for 96h	
	Dry heat	80 \pm 2°C for 96h	
	Damp heat	60 \pm 2°C, 90 to 95%RH for 96h	

Power

Push

Slide

Rotary

Encoders

Detector

Dual-in-line
Package TypeMulti Control
Devices

TACT

Custom-
ProductsSharp
FeelingSoft
FeelingSnap-in
TypeSurface
Mount TypeRadial
Type

Note

We can raise the working temperature range for in-vehicle applications upon request. Contact us if you have any requirements of this kind.

Specifications of LED (SKHJ)

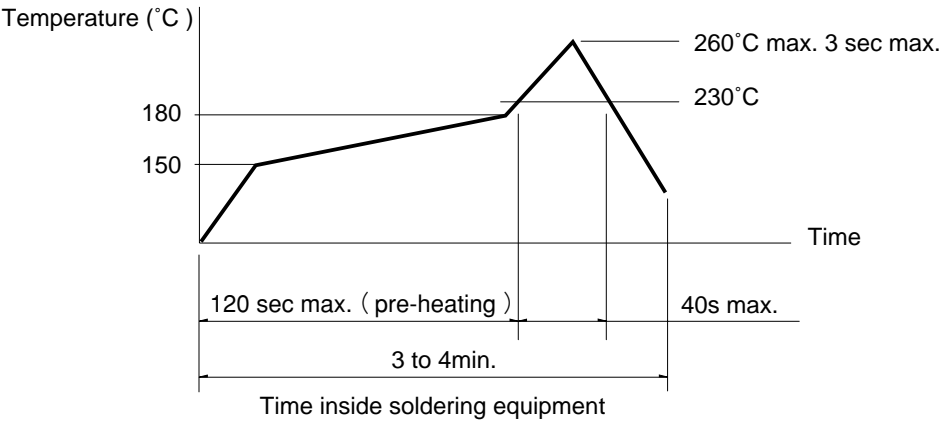
Color of light	Power dissipation P (mW)	Forward pulse peak current IFP (mA)	Forward current IFDC (mA)	Reverse voltage VR (V)	Forward voltage VF (V) IF=10mA	Reverse current IR (μ A) VR=4V	Peak emission wave length λ peak (nm) IF=10mA	Spectral line half width $\Delta \lambda$ (nm) IF=10mA	Luminous intensity IV (mcd) IF=10mA
Red	40	80	15	4	2.7 max. 2.05TYP	5 max.	700 TYP	100 TYP	0.4min. 1.0 TYP
Pure green					2.7 max. 2.0 TYP	10 max.	555 TYP	20 TYP	0.8min. 2.0 TYP
Amber							590 TYP	30 TYP	0.4min. 1.0 TYP
Orange (High brightness)				3			630 TYP	40 TYP	1.5min. 4.0 TYP
Green (High brightness)				4	2.7 max. 2.05TYP		565 TYP	30 TYP	2.0min. 5.0 TYP

Soldering Conditions

Condition for Reflow

Available for Surface Mount Type. (Except SKHM, SKHU, SKRM, SKRR Series)

- 1. Heating method: Double heating method with infrared heater.
- 2. Temperature measurement: Thermocouple 0.1 to 0.2 ϕ CA (K) or CC (T) at soldering portion (copper foil surface) . A heat resisting tape should be used for fixed measurement.
- 3. Temperature profile



Notes

- 1. The condition mentioned above is the temperature on the mounting surface of a PC board. There are cases where the PC board's temperature greatly differs from that of the switch, depending on the PC board's material, size, thickness, etc. The above-stated conditions shall also apply to switch surface temperatures.
- 2. Soldering conditions differ depending on reflow soldering machines. You are requested to verify the soldering conditions thoroughly beforehand.

Conditions for Auto-dip

Available for Snap-in Type and Radial Type

(Except SKHJ, SKHL, SKQC, SKQJ, SKQK, SKEG series)

Items	Condition
Flux built-up	Mounting surface should not be coated with flax
Preheating temperature	Ambient temperature of the soldered surface of PC board. 100°C max.
Preheating time	60s max.
Soldering temperature	260°C max.
Continuous dipping time	5s max.
Number of soldering	2times max.

Manual Soldering

Available for Manual Soldering Type

Items	Condition
Soldering temperature	350°C max.
Continuous soldering time	3s max.

Notes

- 1. Consult with us for TACT switch washing conditions.
- 2. Prevent flux penetration from the top side of the TACT switch.
- 3. Switch terminals and a PC board should not be coated with flux prior to soldering.
- 4. The second soldering should be done after the switch returns to normal temperature.
- 5. Use the flux with a specific gravity of at least 0.82.
(EC-19s-8 by TAMURA Corporation, or their equivalents.)