

**Ordering number C11916_SATU-S**

Family	Satu	FWHM	18 degrees
Type	-	Efficiency	88 %
LED	XP-E	cd/Im	-
Color	Clear	Gerber File	Available
Diameter	21.8 mm		
Height	8.9 mm		
Style	Round		
Optic Material	PMMA		
Holder Material	-		
Fastening	Pin, glue		
Status	Ready		

Ordering number C11917_SATU-O

Family	Satu	FWHM	20+42 degrees
Type	-	Efficiency	88 %
LED	XP-E	cd/Im	2.900
Color	Clear	Gerber File	Available
Diameter	21.8 mm		
Height	8.9 mm		
Style	Round		
Optic Material	PMMA		
Holder Material	-		
Fastening	Pin, glue		
Status	Ready		

Ordering number C11602_SATU-M

Family	Satu	FWHM	26 degrees
Type	-	Efficiency	93 %
LED	XP-E	cd/Im	-
Color	Clear	Gerber File	Available
Diameter	21.8 mm		
Height	8.9 mm		
Style	Round		
Optic Material	PMMA		
Holder Material	-		
Fastening	Pin, glue		
Status	Ready		

Ordering number C11544_SATU-W

Family	Satu	FWHM	32 degrees
Type	-	Efficiency	86 %
LED	XP-E	cd/Im	-
Color	Clear	Gerber File	Available
Diameter	21.8 mm		
Height	8.9 mm		
Style	Round		
Optic Material	PMMA		
Holder Material	-		
Fastening	Pin, glue		
Status	Ready		



PRODUCT DATASHEET

Satu series

last update 2/4/2013

NOTE: The typical divergence will be changed by different color, chip size and chip position tolerance. The typical total divergence is the full angle measured where the luminous intensity is half of the peak value.



PRODUCT DATASHEET

Satu series

last update 2/4/2013

GENERAL INFORMATION

- Product series especially designed & optimized for XP-E series of LEDs.
- Special care taken to make light distribution as uniform as possible.
- Lens material optical grade PMMA with high UV and temperature resistance (105 degrees of Celcius / 220 degrees of Fahrenheit). Allows use of high current and temperature conditions.

Please find more information about used material from below:

http://ledil.fi/sites/default/files/Documents/Technical/Material/PMMA%20N%20UL94_Yellow%20Card.pdf

<http://ledil.fi/sites/default/files/Documents/Technical/Material/PMMA%20N%20PLEXIGLAS-Datasheet.pdf>

- Fastening to PCB with appropriate adhesive. By clicking link below you can find Ledil recommended glue options.

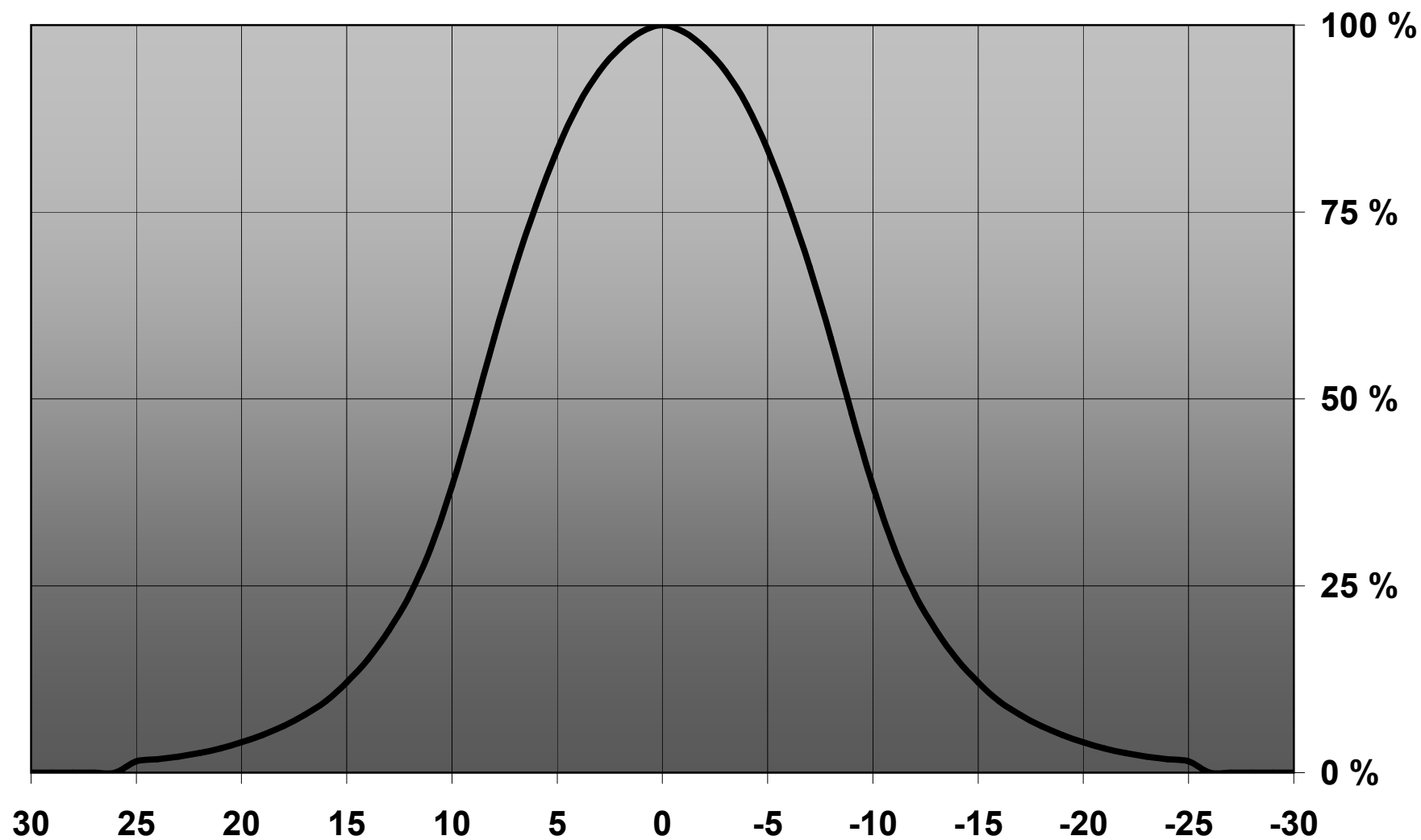
http://www.ledil.com/datasheets/DataSheet_GLUES.pdf

NOTE 1: We advise customer to ensure the suitability and sufficiency of the bond in the end product. For example, mechanical stress, vibration and holes on the surface of the circuit board weaken the strength of the glue.

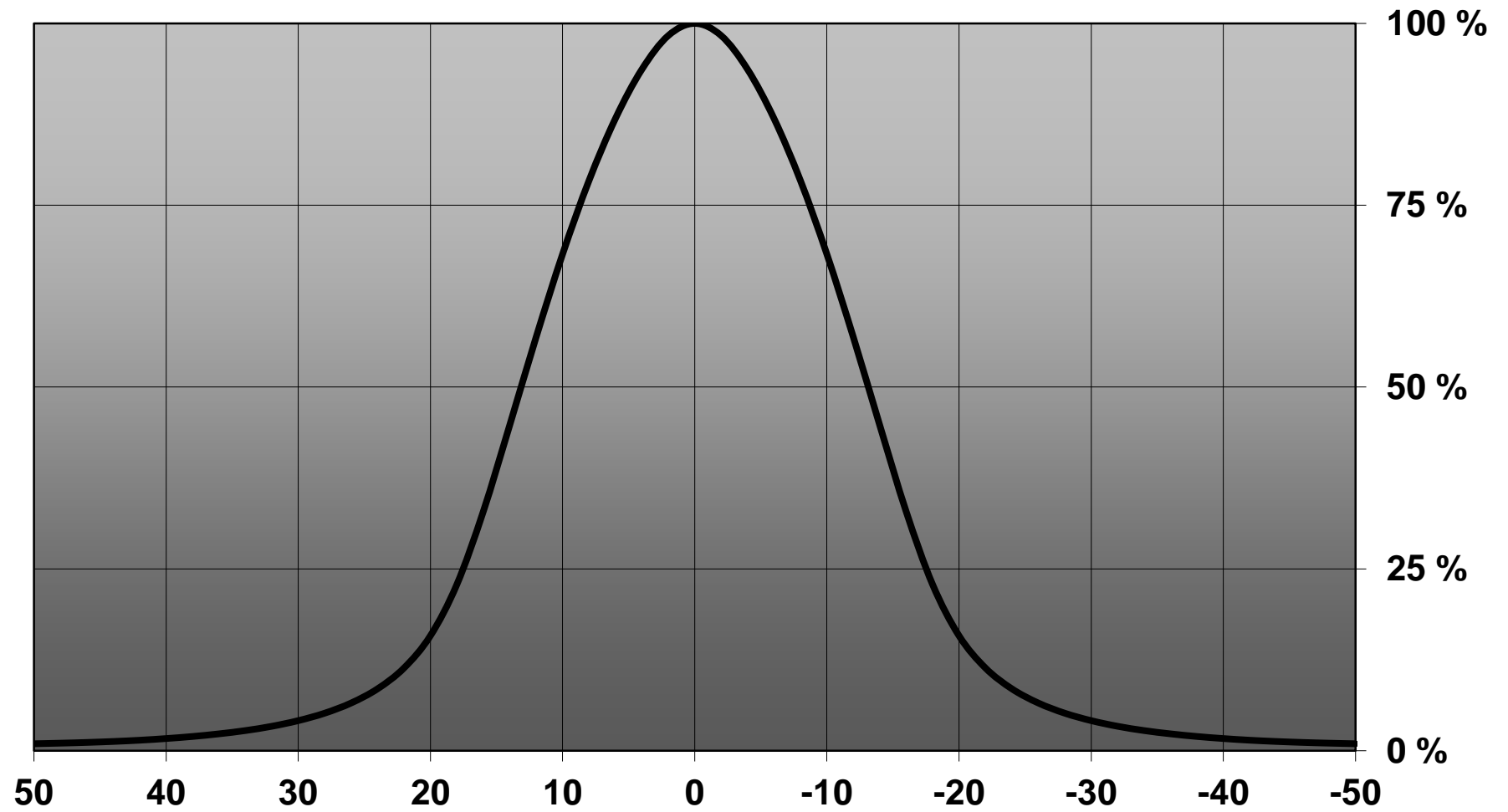
NOTE 2: All surfaces where glue is applied must be clean, dry and free from grease and dirt. If cleaning of PCB surfaces is needed, please follow strictly the cleaning instructions of your LED manufacturer -this is important as cleaning shall under no circumstances damage LEDs or other electronics components on the PCB.

Further note that optical components shall not be cleaned with any chemicals - only micro fiber cloth may be used to remove fingerprints or other traces from handling.

Relative Intensity of C11916_Satu-S-XP

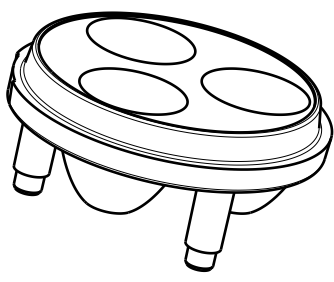


Relative intensity of Satu-M-XP

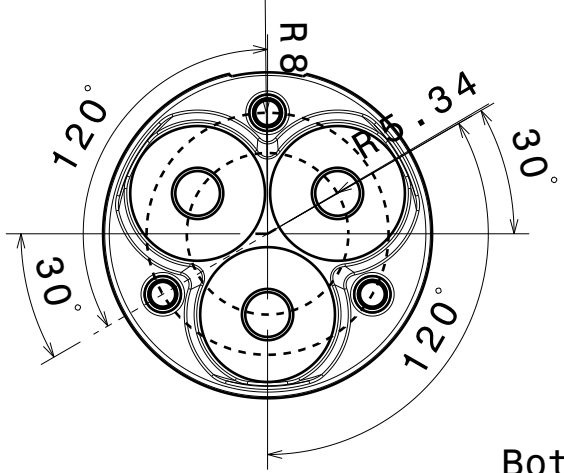


D C B A

4

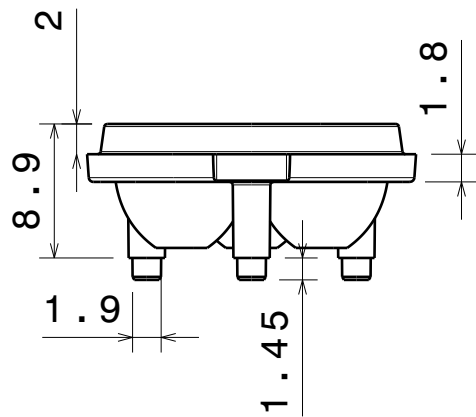


Isometric view



Bottom view

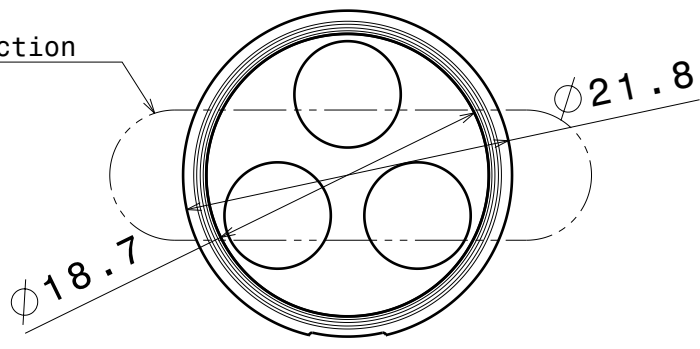
3



Front view

2


Oval beam direction



Top view

Material: PMMA

1

This drawing is our property. It can't be reproduced or communicated without our written agreement.		 LEDIL L T F F e e i n d			
		DRAWING TITLE			
DRAWN BY o	DATE 31.05.2010	Datasheet Satu Lens			
CHECKED BY p	DATE 31.05.2010	SIZE A4	DRAWING NUMBER		REV 1
DESIGNED BY hh/ol	DATE 31.05.2010	SCALE 2 : 1	WEIGHT (g)	SHEET	1 / 1

4

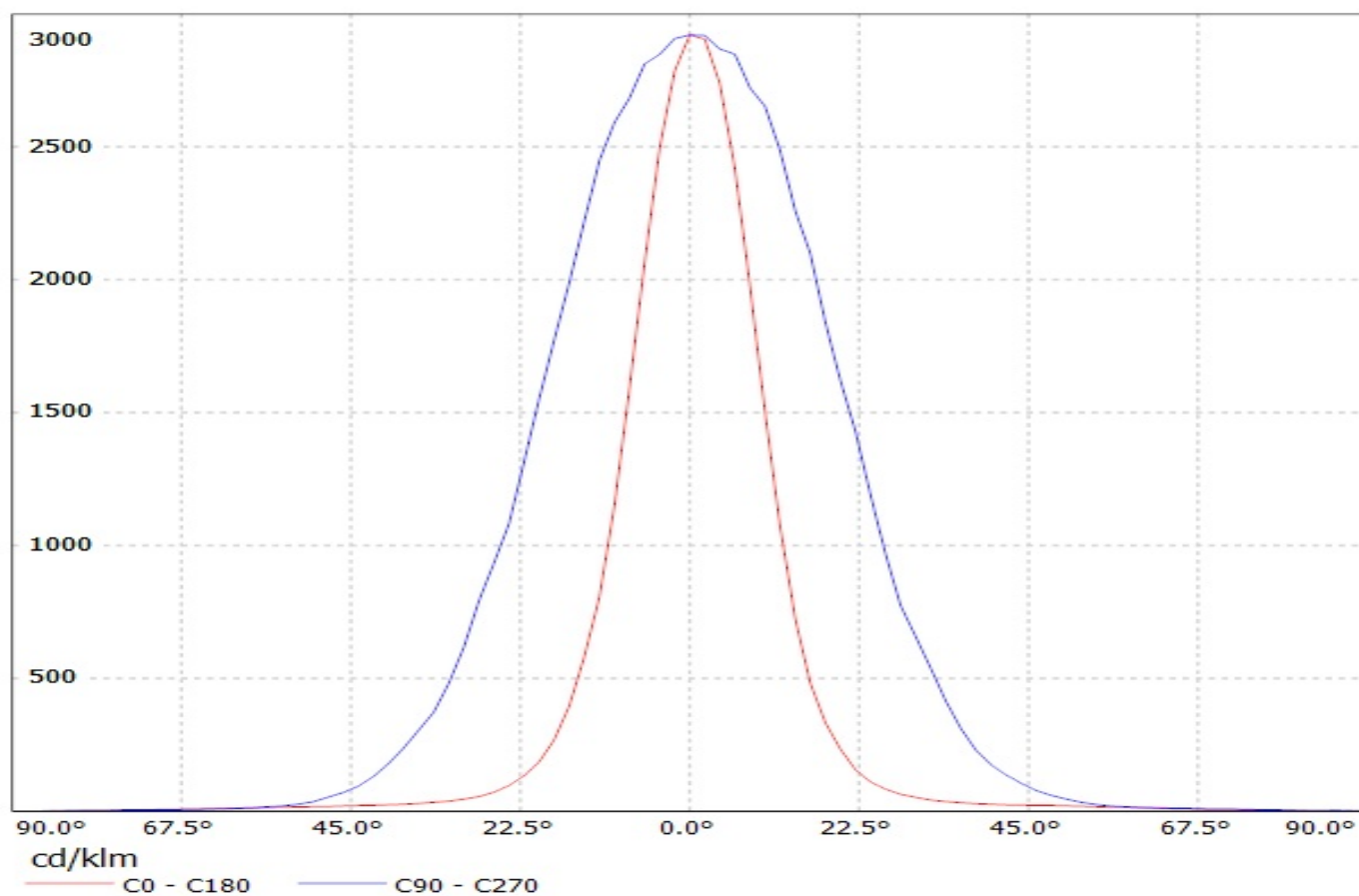
3

2

1

D A

Luminaire: Ledil Oy C11917_SATU-O (Cree XP-E 219lm @ 250mA) Efficiency=88%
Lamps: 1 x Cree XP-E 219lm @ 250mA



Luminaire: Ledil Oy C11917_SATU-O (Cree XP-E 219lm @ 250mA) Efficiency=88%
Lamps: 1 x Cree XP-E 219lm @ 250mA

