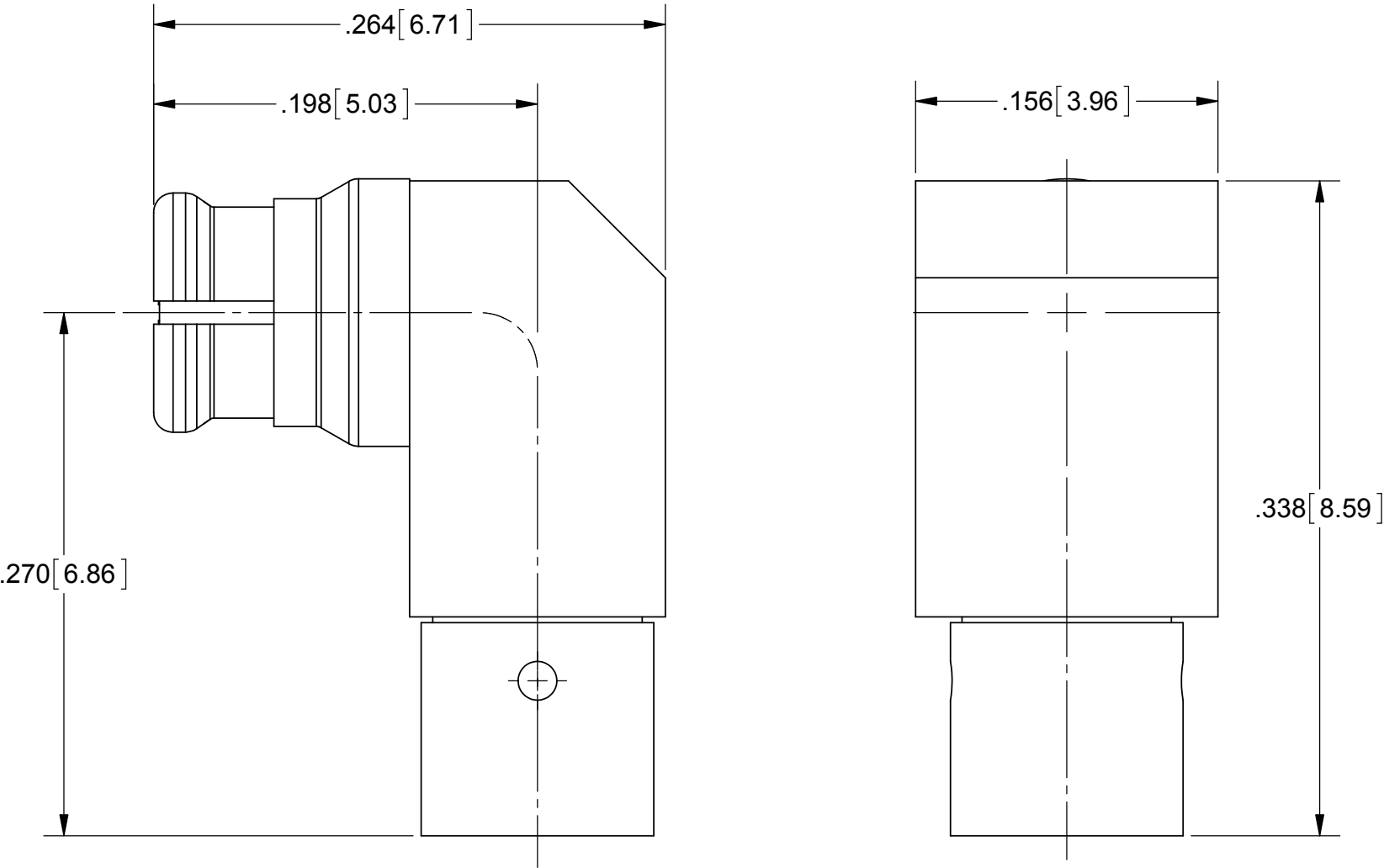
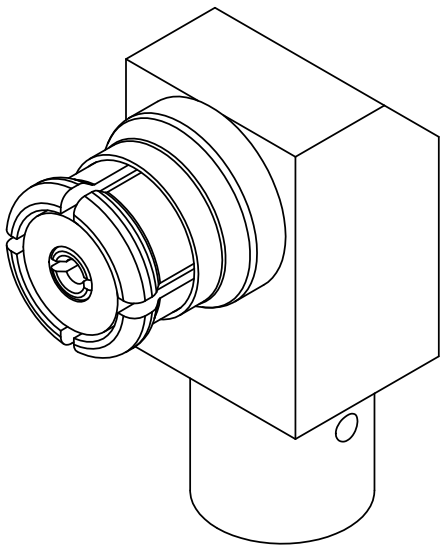


PRODUCT DATA DRAWING

REVISION HISTORY			
REV	DESCRIPTION	DATE	APPROVED
A	DCN 41510	07/15	STW



MATERIAL:


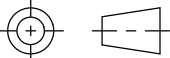
BODY, ANTI-ROCK RING & CONTACT:	BERYLLIUM COPPER
INSULATOR:	PTFE
CABLE STOP:	PCTFE

FINISH:

BODY, ANTI-ROCK RING & CONTACT:	GOLD OVER NICKEL
---------------------------------	------------------

PERFORMANCE:

IMPEDANCE:	50 OHMS
FREQ. RANGE:	DC TO 26.5 GHz.
VSWR:	1.25:1 DC TO 26.5 GHz.
INSERTION LOSS:	.12 X SQRT(F(F IN GHz))

MATERIAL:	SEE NOTES	DIMENSIONS ARE IN INCHES TOLERANCES: FRACTIONAL: $\pm 1/64$ ANGULAR: X° $\pm 1^{\circ}0'$ X°X' $\pm 15'$ DECIMAL: .X $\pm .030$ .XX $\pm .010$ .XXX $\pm .005$ INTERPRET DIMENSIONS AND TOLERANCES PER ASME Y14.5M - 1994	UNLESS OTHERWISE SPECIFIED 1) ALL DIMENSIONS ARE IN INCHES (MILLIMETERS) 2) ALL DIMENSIONS ARE AFTER PLATING. 3) BREAK CORNERS & EDGES .005 R. MAX. 4) CHAM. 1ST & LAST THREADS. 5) SURFACE ROUGHNESS 63-MIL-STD-10. 6) DIA.'S ON COMMON CENTERS TO BE CONCENTRIC WITHIN .005 T.I.R. 7) REMOVE ALL BURRS	 2400 Centrepark West Drive, Suite 100 West Palm Beach, FL 33409
FINISH:	SEE NOTES			
SURFACE AREA:	N/A			
PROPRIETARY THE INFORMATION CONTAINED IN THIS DRAWING IS THE SOLE PROPERTY OF SV MICROWAVE, INC. ANY REPRODUCTION IN PART OR AS A WHOLE WITHOUT THE WRITTEN PERMISSION OF SV MICROWAVE, INC IS PROHIBITED.		THIRD ANGLE PROJECTION 	DRAWN: HLP 11/29/07 CHECKED: STW 11/29/07 APPROVED: STW 11/29/07	TITLE: SMP R/A FEMALE FOR Ø.085 CABLE
			SIZE B CAGE CODE 95077 DWG. NO. 1222-4005	SCALE: 12:1 SHEET 1 OF 1