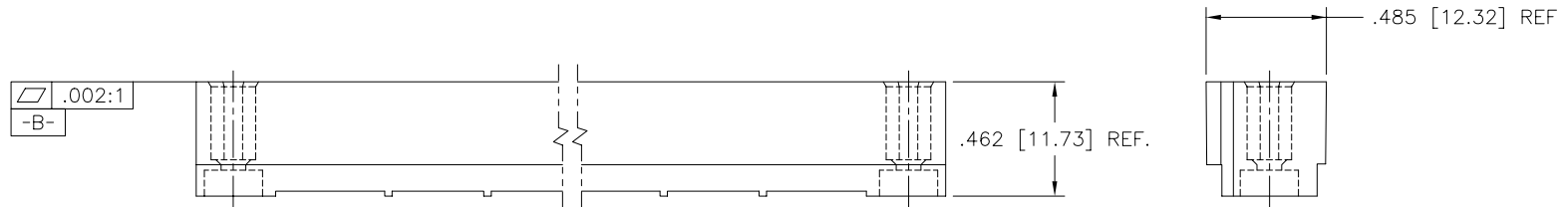
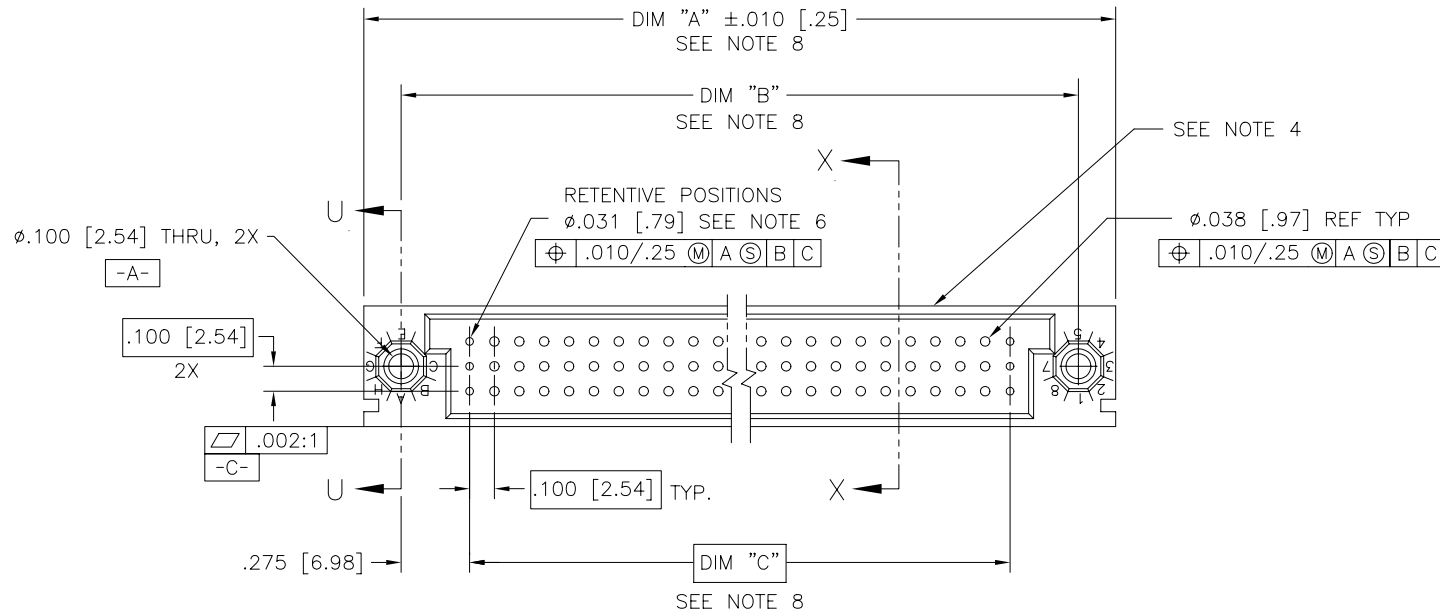


PRODUCT NO.

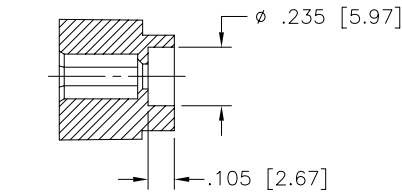
SEE NOTE 1



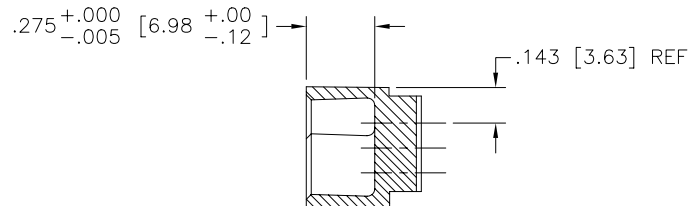
mat'l. code NOTE 3				surface ISO 1302 ✓		tolerance ISO 406 ISO 1101	projection INCH/MM	product family HPC	
ltr	ecn	no	dr	date	tolerances unless otherwise specified			title	
G	V10135	LSS		1/11/01	angles	.XX ±.01/.3	scale 1:1	VERTICAL SHROUD-RETENTIVE 3 ROW W/O GUIDE PINS	
H	V20188	MEM		2/14/02	linear	.XXX ±.005/.13			
J	V20333	MEM		2/14/02	σ±2'	.XXXX ±.0020/.051	FCI	dwg no	
K	V21752	TAB		11/12/02	dr	D. SHEAFFER		sheet 1 of 5 size	
L	V03-0409	MEM		4/11/03	enrg	S. CLARK	A3	50428	
M	V05-0699	DAI		8/19/05	chr	S. CLARK		type	
N	M06-0255	AEA		7/07/06	appd	S. CLARK	Product Customer Drawing		
sheet	revision	N	N	N	N	N			
index	sheet	1	2	3	4	5			

PRODUCT NUMBER

SEE NOTE 1



SECTION U-U



SECTION X-X

NOTES:

- ①. PRODUCT NUMBERING CODE:
 50428-X YYX LF
 LEAD FREE (OPTIONAL) SEE NOTE 7
 ALWAYS "X"
 NO. OF POSITIONS (SEE NOTE 2)
 ALWAYS "X"
 BASE NUMBER

SEE SHEET 3 FOR P/N 50428-XX001 OR 50428-XX001LF
 SEE SHEET 4 FOR P/N 50428-XX002 OR 50428-XX002LF
 SEE SHEET 5 FOR P/N 50428-XX003 OR 50428-XX003LF

- ②. THIS PRODUCT IS CONFIGURED IN SIZES OF 6 THRU 80 COLUMNS IN INCREMENTS OF ONE.
 i.e.: 6, 7, 8, 9,.....79, 80.
- ③. MATERIAL: GLASS AND MINERAL FILLED THERMOPLASTIC
 FLAME RETARDANT PER UL94 V-0. COLOR: BLACK
- ④. MANFACUTRE'S NAME, P/N, AND LOT CODE TO APPEAR ON THIS SURFACE.
5. THIS SHROUD WILL WITHSTAND EXPOSURE TO 260°C PEAK TEMPERTURE FOR 10-30 SECONDS IN A CONVECTION, INFRA-RED OR VAPOR PHASE REFLOW OVEN.
- ⑥. DIMENSION APPLIES TO END COLUMN HOLES AT BOTH ENDS.
- ⑦. THIS PRODUCT (WITH "LF" SUFFIX) MEETS EUROPEAN UNION DIRECTIVES AND OTHER COUNTRY REGULATIONS AS DESCRIBED IN GS-22-008.
- ⑧. LENGTH FORMULAS
 DIM A = .100/2.54 x NO. OF COLUMNS + .75/19.1
 DIM B = .100/2.54 x NO. OF COLUMNS + .450/11.43
 DIM C = .100/2.54 x NO. OF COLUMNS - .100/2.54

mat'l. code				surface	tolerance	projection	product family
-				ISO 1302	ISO 406 ISO 1101		HPC
ltr	ecn	no	dr	date	tolerances unless otherwise specified		title
N					angles linear	INCH/MM	VERTICAL SHROUD-RETENTIVE 3 ROW W/O GUIDE PINS
					0°±2°	scale 1:1	
			dr	D. SHEAFFER	8/07/91	FCI	dwg no
			enr	S. CLARK	10/23/91		sheet 2 of 5 size
			chr	S. CLARK	10/23/91		50428 A3
			appd	S. CLARK	10/23/91		type Product Customer Drawing
sheet	revision						
index	sheet						

Technical drawing of a vertical shroud with three rows of retentive pins. The drawing includes a top view and a side view.

Top View Dimensions:

- Overall Width: 5.75 ± 0.10 [2.5] inches
- Overall Length: 4.900 inches
- Pin Pitch (Rows 1 & 3): 0.100 [2.54] inches
- Pin Pitch (Row 2): 0.100 [2.54] TYP.
- Pin Diameter (Rows 1 & 3): 0.031 [0.79] inches
- Pin Diameter (Row 2): 0.038 [0.97] REF TYP
- Section Line U: .275 [6.98] inches
- Section Line V: .100 [2.54] inches
- Section Line W: .100 [2.54] inches
- Section Line X: .031 [0.79] inches

Side View Dimensions:

- Overall Thickness: 0.485 [12.32] REF
- Pin Thickness: 0.462 [11.73] REF

Surface Finish: .002:1 (indicated by a triangle symbol)

Retentive Positions: RETENTIVE POSITIONS 0.031 [0.79] (indicated by a circle with a crosshair symbol)

Section Lines: U, V, W, X (indicated by arrows pointing to the respective sections)

Notes:

- NOTE 3: Ltr, ecn, no, dr, date
- NOTE 4: SEE NOTE 4

Material: mat'l. code NOTE 3

Surface: surface ISO 1302 ✓

Tolerance: tolerance ISO 406 ISO 1101

Projection: projection INCH/MM

Product Family: product family HPC

Title: title VERTICAL SHROUD-RETENTIVE 3 ROW W/O GUIDE PINS

DWG No: dwg no 50428

Sheet: sheet 3 of 5

Size: size A3

Type: type Product Customer Drawing

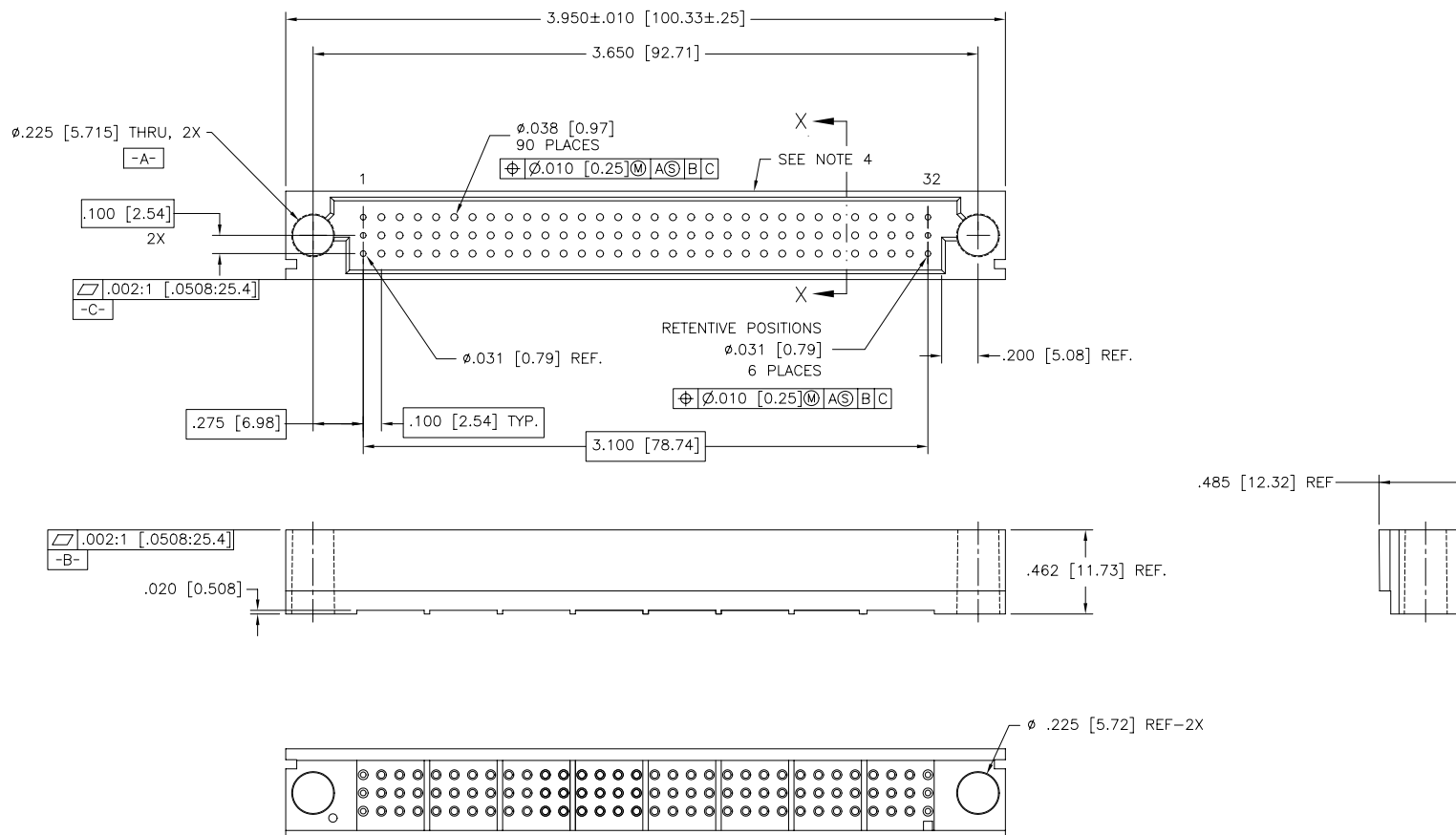
Revisions:

dr	enr	chr	app	date
L. SANDERS				1/11/01
M. GRAY				1/11/01
M. GRAY				1/11/01
M. GRAY				1/11/01

Sheet Index:

sheet index	revision sheet
1	
2	
3	
4	
5	
6	

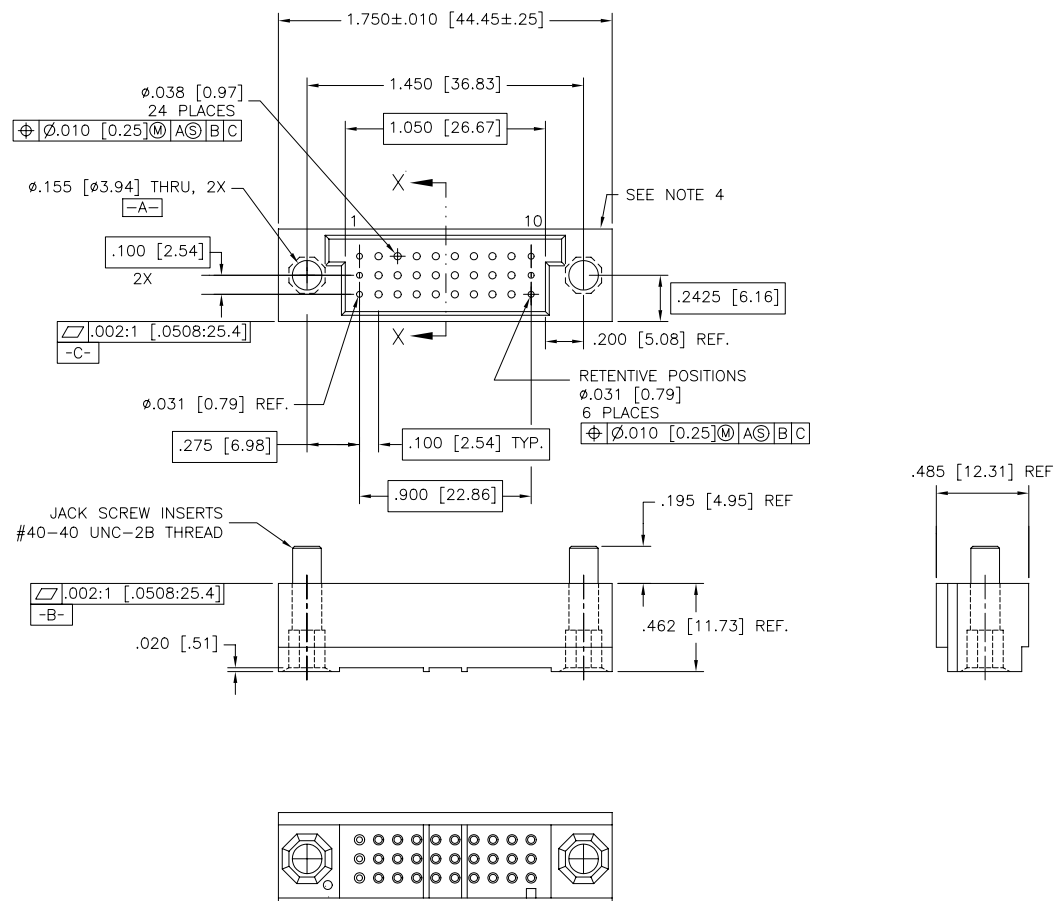
PRODUCT NUMBER	DESCRIPTION	NOTE
50428-XX002	96 POSITION SPECIAL SHROUD	SEE NOTE 1
50428-XX002LF	SAME AS 50428-XX002	SEE NOTE 7



mat'l. code				surface	tolerance	projection	product family
-				ISO 1302	ISO 406		HPC
				ISO 1101	ISO 1101		
ltr	ec	no	dr	date	tolerances unless otherwise specified		title
N					linear		VERTICAL SHROUD-RETENTIVE 3 ROW W/O GUIDE PINS
					angles	scale 1:1	
					0°±2°		
					dr M. MOSTOLLER 1/24/02		dwg no
					enr M. MOSTOLLER 1/24/02		50428
					chr J. ALLISON 1/24/02		sheet 4 of 5 size
					app M. MOSTOLLER 1/24/02		A3
sheet	revision						type
index	sheet						Product Customer Drawing

form: A3

PRODUCT NUMBER	DESCRIPTION	NOTES
50428-XX003	30 POSITION SPECIAL SHROUD W/ JACK SCREW INSERTS	SEE NOTE 1
50428-XX003LF	SAME AS 50428-XX003	SEE NOTE 7



CONFIDENTIAL

[illegible]

Mouser Electronics

Authorized Distributor

Click to View Pricing, Inventory, Delivery & Lifecycle Information:

FCI:

[50428-X096X](#) [50428-X096XLF](#)