

Item #	Description	Color	1-9	10-24	25-99	100-249	250-499
--------	-------------	-------	-----	-------	-------	---------	---------

Waterproof USB Cable Assemblies and Panel Mount Couplers - IEC IP67 Rated

As USB interconnect systems gain in popularity, so do the demands on the cabling systems. Standard USB connectors are not intended to withstand contaminants such as water and dust. By utilizing rugged, molded outer shells and a threaded coupling with an O-ring seal, these products are IEC IP67 rated. Optional waterproof cover purchased separately.

Waterproof Cable Assemblies - Revision 2.0 Compliant

Two types of assemblies are offered in a variety of lengths: waterproof USB A male to standard USB B male and waterproof, panel mountable USB A female to standard USB A male. Both types feature molded backshells, revision 2.0 compliant, fully shielded cable and threaded couplings. Color is black.

WPUSBAB-2M	USB Cable, Waterproof Type A Male / Standard Type B Male, 2.0m		18.50	16.65	14.80	12.95	11.10
WPUSBAB-5M	USB Cable, Waterproof Type A Male / Standard Type B Male, 5.0m		21.50	19.35	17.20	15.05	12.90
WPUSBAX-05M	USB Cable, Waterproof Panel Mt. Type A Fem. / Std. Type A Male, 0.5m		17.00	15.30	13.60	11.90	10.20
WPUSBAX-2M	USB Cable, Waterproof Panel Mt. Type A Fem. / Std. Type A Male, 2.0m		18.50	16.65	14.80	12.95	11.10
WPUSBAX-5M	USB Cable, Waterproof Panel Mt. Type A Fem. / Std. Type A Male, 5.0m		21.50	19.35	17.20	15.05	12.90
WPUSB-CVR	USB Cover, Waterproof		4.35	4.09	3.83	3.57	3.31

Waterproof USB Type A Jack with 10" Wire Leads

This product is ideal for enclosures or panels that are exposed to harsh environments. Wire leads are 24 AWG and can easily be soldered into a PCB or terminated with a variety of connectors.

WPUSBAF	USB Jack, Waterproof Type A with 10" Wire Leads		18.00	16.20	14.40	12.60	10.80
WPUSB-CVR	USB Cover, Waterproof		4.35	4.09	3.83	3.57	3.31

USB Coil Cord - Type A Latching Connector to Type B Connector, 10.5 Feet Extended

This unique cable assembly features a polyurethane jacketed coil cord plus a latching Type A USB connector providing improved mating retention with any USB Type A jack. The latches lock into the channels on each side of a USB jack when fully mated. Retracted length is approximately 2.5 feet expanding up to 10.5 feet. Fully shielded and USB 2.0 compliant, this cable contains two 28 AWG power conductors plus one 28 AWG twisted pair for the data lines. Color is black.

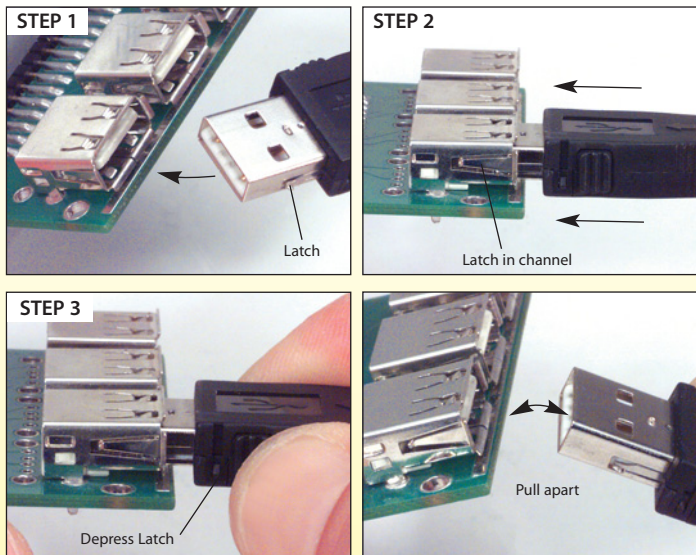
COILUAB	USB Coil Cord, Latching Type A Male / Type B Male	Black	15.50	14.26	13.02	11.78	10.54
---------	---	-------	-------	-------	-------	-------	-------

TIP: How does the latching USB connector work?

1. Insert the latching USB connector into the USB jack.
2. The latches on each side of the connector lock into the channel cut-outs of any USB jack.

Note: It may be necessary to rock the latching connector slightly to set the latches into the channels.

3. To remove the latching USB connector, simply depress the release mechanisms on the sides of the backshell and pull apart.



Mountable USB Extension Cable - Type A Connectors, 30 Microinch Gold

Tired of trying to connect your USB cable to the hard to access port on the back of your PC? Try this convenient cable and make this problem go away! Featuring a USB Type A plug for the PC connection and a unique USB Type A jack, the user can mount this jack to any surface with either screws or double sided foam tape (both are provided). Fully shielded and USB 2.0 compliant, this cable contains two 20 AWG power conductors plus one 28 AWG twisted pair for the data lines and rugged molded backshells. Cable length is 2 meters (6.6 feet), color is light gray.

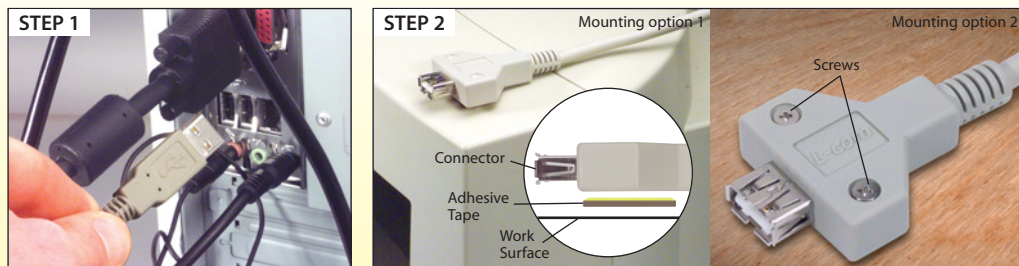
CSMUAXMT-2M	Premium USB Type A Male / Female Mounting Extension Cable, 2.0m		10.50	9.66	8.82	7.98	7.14
-------------	---	--	-------	------	------	------	------

TIP: Advantage of using the USB Mountable Extension Cable Assembly

Connecting a cable to the hard to access USB port on your PC can be difficult.

Suggested Uses:

- Digital Cameras
- MP3 Players
- External Hard Drives
- Test Environments



Simply connect the mountable extension cable once to the USB port on the back of your computer.

This cable can be mounted to your PC monitor or any work surface. Choose your preferred mounting option using either the double sided adhesive tape or screws provided. Your USB port is now easy to access.

