

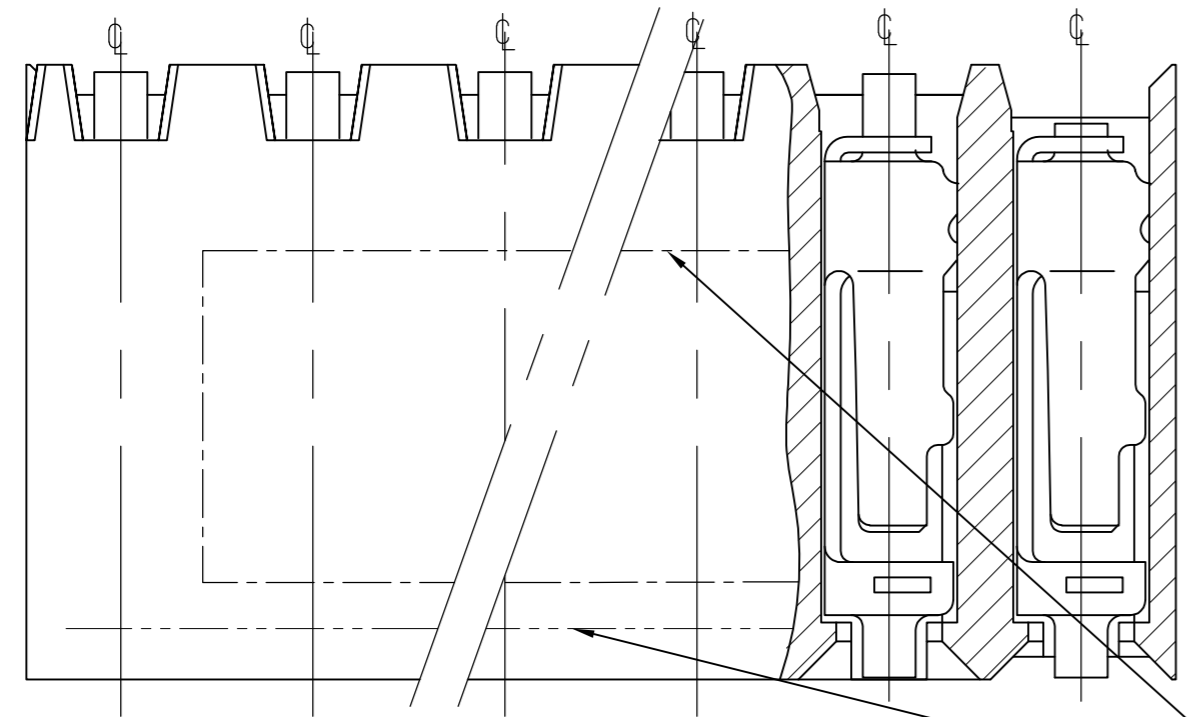
THIS DRAWING IS UNPUBLISHED. RELEASED FOR PUBLICATION
 © COPYRIGHT - By - ALL RIGHTS RESERVED.

| PART NUMBER | 'N' POS. PER ROW | DIMENSIONS | |
|---------------------|------------------|------------|--------|
| | | A | B |
| 216604-2 | 2 | 5.08 | 2.54 |
| 216604-3 | 3 | 7.62 | 5.08 |
| 216604-4 | 4 | 10.16 | 7.62 |
| 216604-5 | 5 | 12.70 | 10.16 |
| 216604-6 | 6 | 15.24 | 12.70 |
| 216604-7 | 7 | 17.78 | 15.24 |
| 216604-8 | 8 | 20.32 | 17.78 |
| OBSOLETE 216604-9 | 9 | 22.86 | 20.32 |
| 1-216604-0 | 10 | 25.4 | 22.86 |
| 1-216604-1 | 11 | 27.94 | 25.4 |
| 1-216604-2 | 12 | 30.48 | 27.94 |
| 1-216604-3 | 13 | 33.02 | 30.48 |
| OBSOLETE 1-216604-4 | 14 | 35.56 | 33.02 |
| OBSOLETE 1-216604-5 | 15 | 38.1 | 35.56 |
| 1-216604-6 | 16 | 40.64 | 38.1 |
| 1-216604-7 | 17 | 43.18 | 40.64 |
| 1-216604-8 | 18 | 45.72 | 43.18 |
| OBSOLETE 1-216604-9 | 19 | 48.26 | 45.72 |
| 2-216604-0 | 20 | 50.8 | 48.26 |
| 2-216604-1 | 21 | 53.34 | 50.8 |
| OBSOLETE 2-216604-2 | 22 | 55.88 | 53.34 |
| 2-216604-3 | 23 | 58.42 | 55.88 |
| 2-216604-5 | 25 | 63.5 | 60.96 |
| 2-216604-7 | 27 | 68.58 | 66.04 |
| OBSOLETE 3-216604-0 | 30 | 76.2 | 73.66 |
| 3-216604-2 | 32 | 81.28 | 78.74 |
| 3-216604-5 | 35 | 88.9 | 86.36 |
| OBSOLETE 4-216604-0 | 40 | 101.6 | 99.06 |
| OBSOLETE 4-216604-6 | 46 | 116.84 | 114.3 |
| OBSOLETE 6-216604-4 | 64 | 162.56 | 160.02 |
| OBSOLETE 6-216604-5 | 65 | 165.1 | 162.56 |

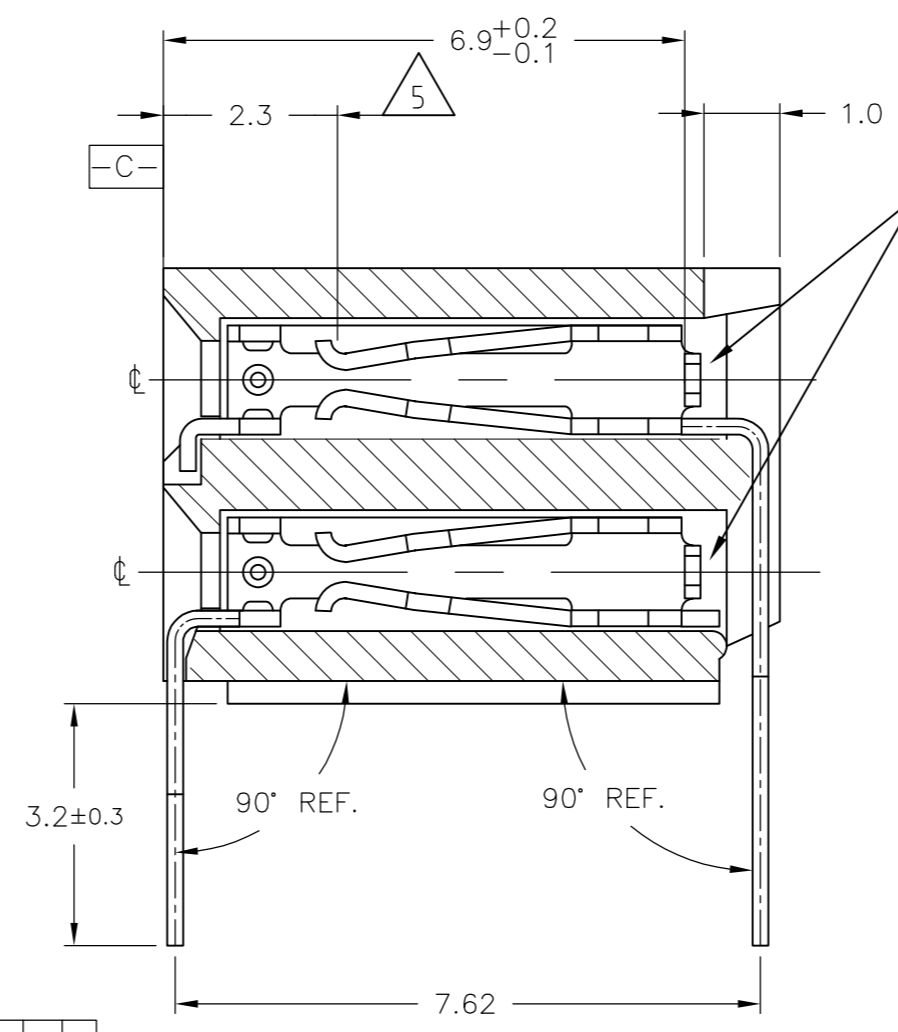
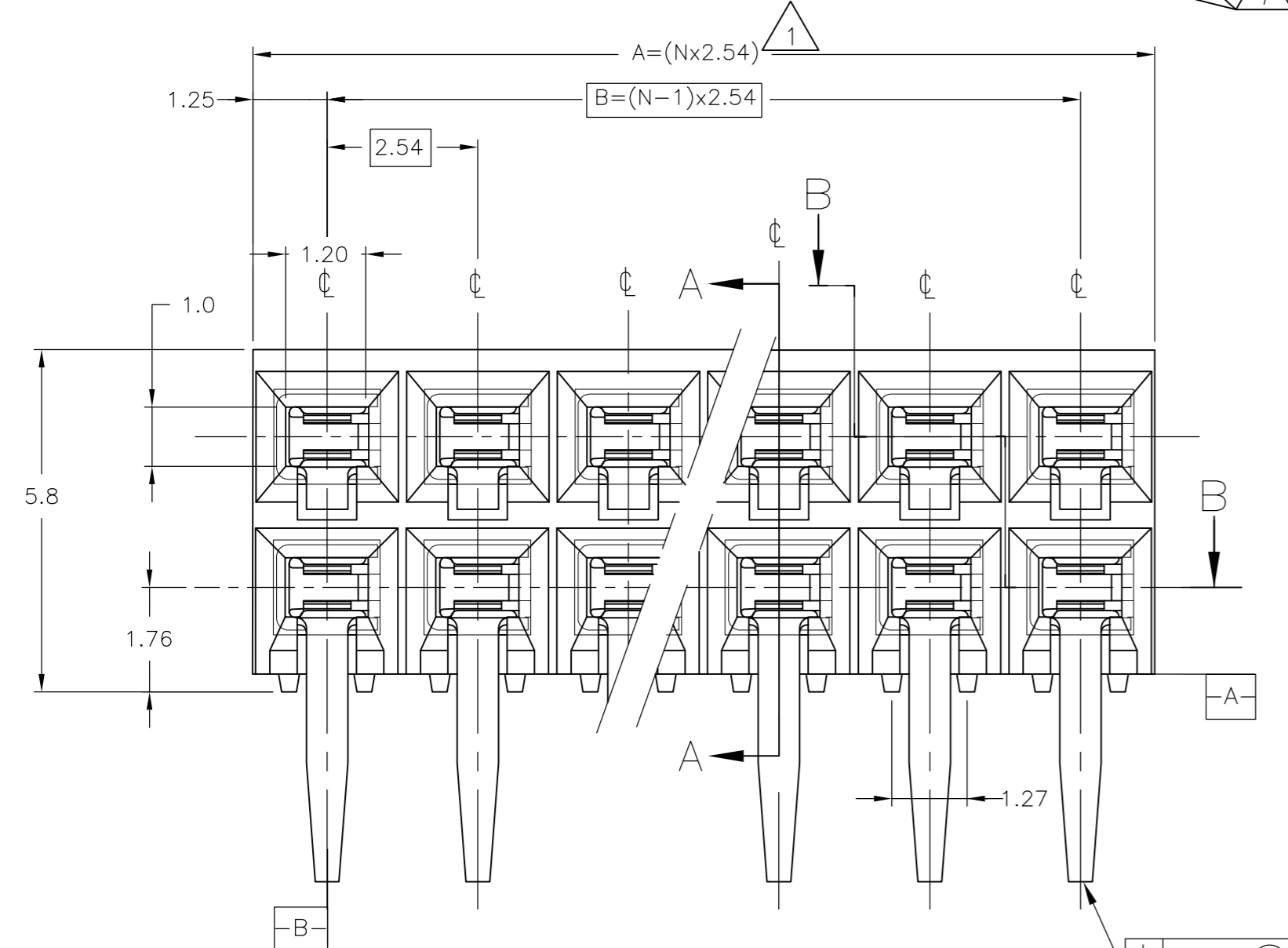
| LOC | DIST | REVISIONS | | | | |
|-----|------|-------------|------|-----|------|----|
| P | LTR | DESCRIPTION | DATE | DWN | APVD | |
| | | | | | | IR |

NOTES:

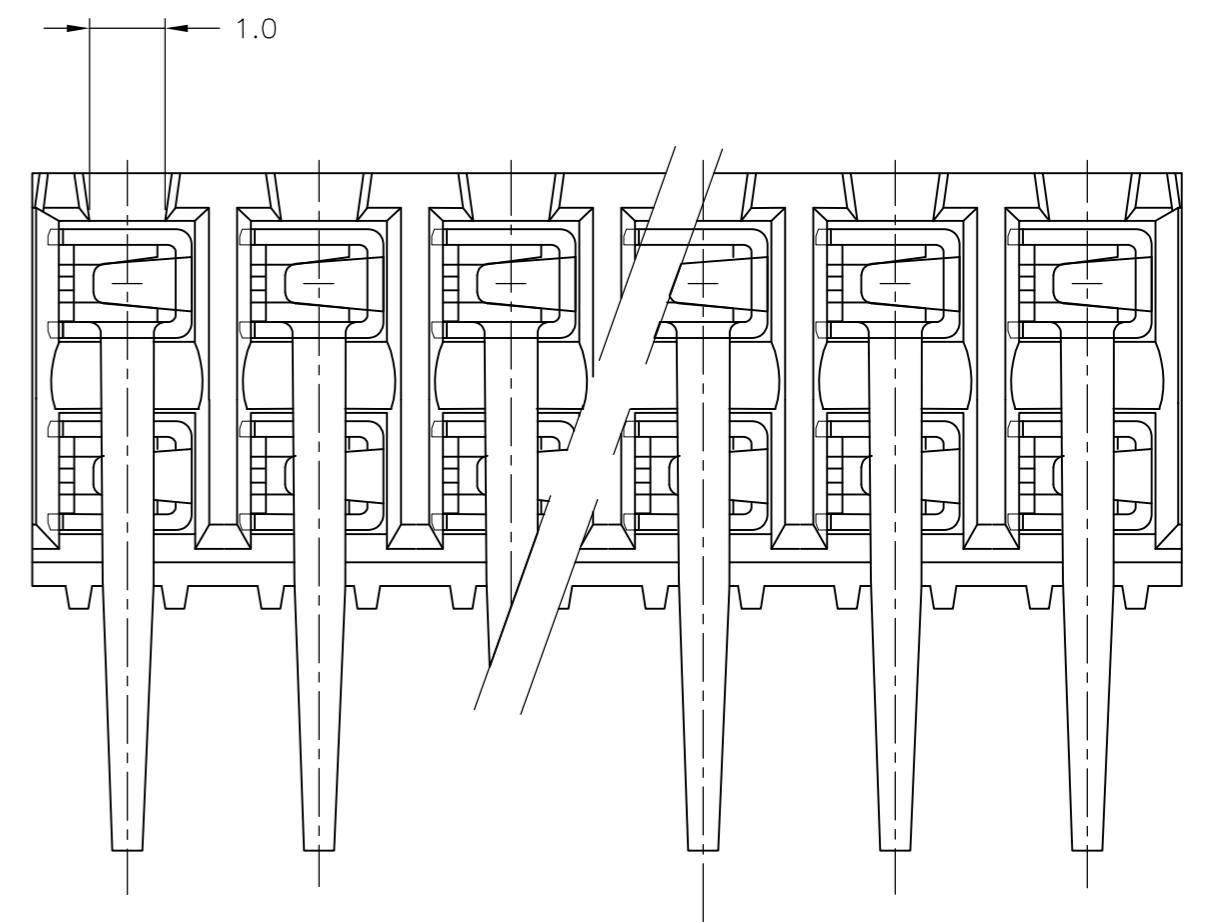
- 1 TO DETERMINE DIMENSION TAKE N= NR. OF POS. FOR EXAMPLE, 10 POS., $N \times 2.54 = 25.4\text{mm}$. FOR ORDER NR. USE BASIC NR. + NR. OF POS. FOR EXAMPLE, 2 POS. = 216604-2 (SHORTEST VERSION) 65 POS. = 6-216604-5 (LONGEST VERSION)
- 2 HOUSING MATERIAL, GREEN GLASS FILLED POLYESTER, UL 94V-0 CONTACT MATERIAL, PHOSPHOR BRONZE.
- 3 PLATING, UNDERCOATING, 1.3µm Ni AT CONT.PLACE, 0.8µm Au AT SOLDER-TINES, 3.0-5.0µm TIN
- 4 MATES WITH 0.63 SQUARE/ROUND MODU POSTS
- 5 CONTACT POINT
- 6 RECOMMENDED P.C.BOARD THICKNESS 1.6mm
- 7 PRINTED: THE WORD "TE" [FOR 2 TO 6 POS] THE WORD "TE" & PRODUCTION DATE [FOR 7 TO 12 POS] THE WORD "TE", PRODUCTION DATE & BASIC PART NO. [FOR 13 TO 65 POS] AND A DASHED LINE OVER THE LENGTH OF HOUSING TO INDICATE CONTACT MATING SIDE.



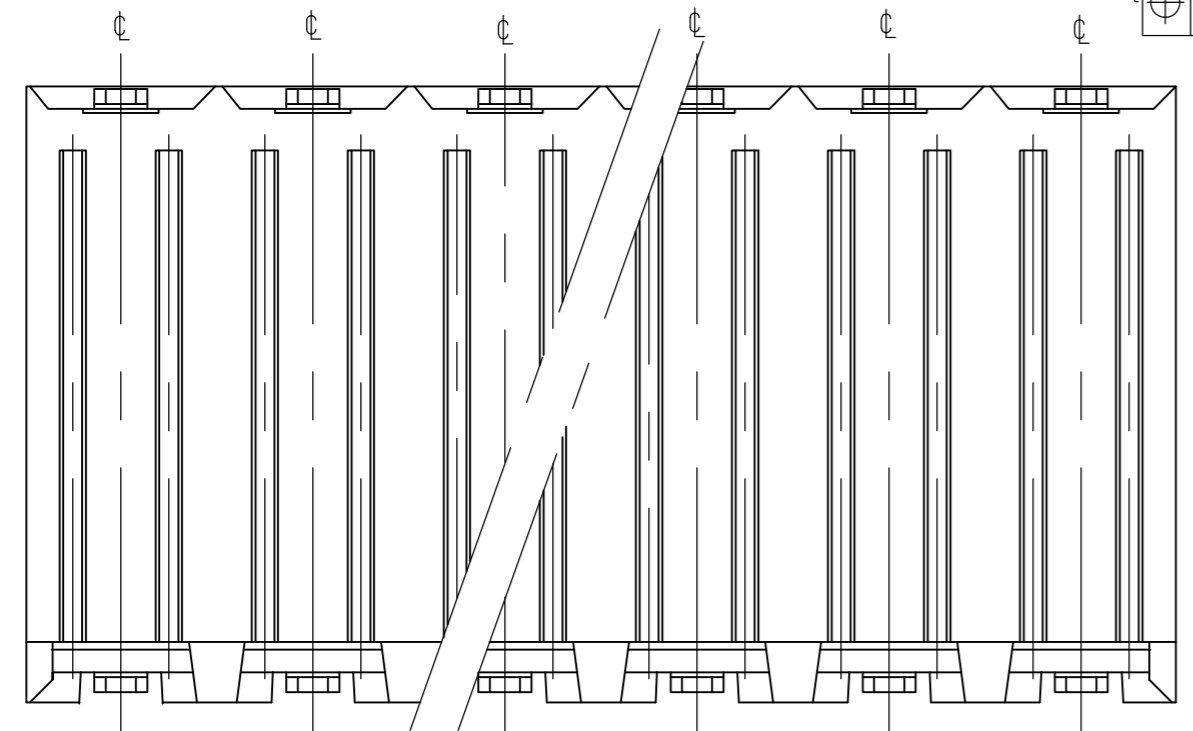
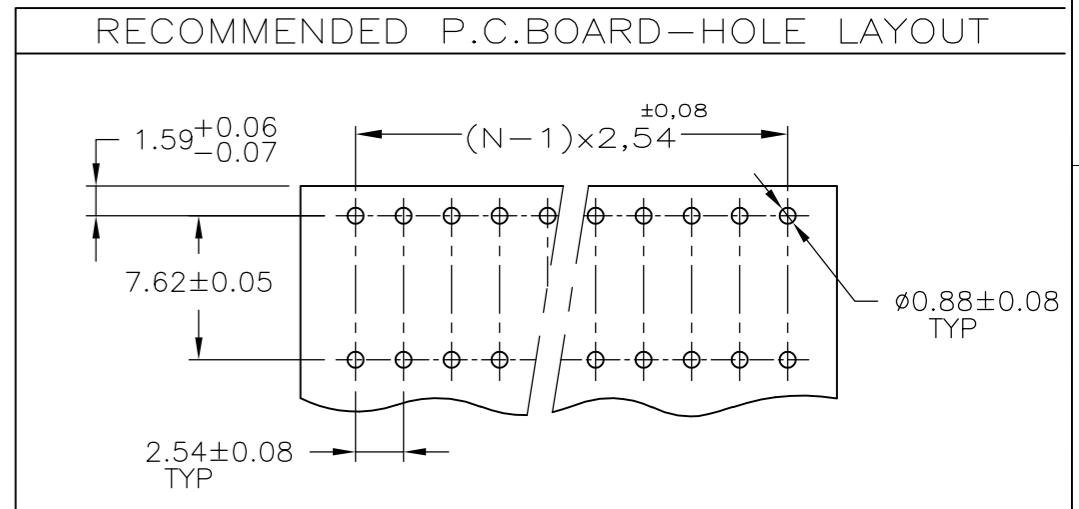
SECTION B-B/TOP VIEW



SECTION A-A



REAR VIEW



BOTTOM VIEW

| | | | | |
|--|--|----------------------------|--|-----------------|
| THIS DRAWING IS A CONTROLLED DOCUMENT. | | DWN W.R.ANNOKKEE 19-12-91 | TE Connectivity | |
| DIMENSIONS: mm | | CHK R. de Blicck 07 NOV 95 | | |
| TOLERANCES UNLESS OTHERWISE SPECIFIED: ±0.15 | | APVD R.SMEETS 07-NOV-95 | NAME | |
| 0 PLC ± - | | PRODUCT SPEC 108-19072 | HV 190 HOR. ASSY DUAL ROW, GOLD VERSION, MAX. 2X65 POSITIONS | |
| 1 PLC ± - | | APPLICATION SPEC | SIZE A2 | CAGE CODE 00779 |
| 2 PLC ± - | | WEIGHT - | DRAWING NO. C=216604 | RESTRICTED TO - |
| 3 PLC ± - | | CUSTOMER DRAWING | SCALE 10:1 | SHEET 1 OF 1 |
| 4 PLC ± - | | | | REV H8 |
| 4 PLC ANGLES ± - | | | | |
| MATERIAL | | FINISH | | |