

CONNOR WINFIELD

+353-61-472221

Top View: Shows the capacitor's footprint. The overall width is 0.125 (3.2mm). The distance from the left edge to the start of the pads is 0.098 (2.5mm). The part number "CS18 6M" and frequency code "* 114M" are printed in the center. The date code is on the right. The top view shows four shaded pads at the corners, numbered 1, 2, 3, and 4. The top and bottom edges are labeled "GND".

Bottom View: Shows the reverse side of the capacitor. It features four shaded pads at the corners, numbered 1, 2, 3, and 4. The distance between the left pads is 0.047 (1.2mm). The distance between the bottom pads is 0.027 (0.7mm). The top edge has a maximum thickness of 0.031 (0.8mm Max.).

Side View: Shows the profile of the capacitor, indicating a maximum thickness of 0.031 (0.8mm Max.).

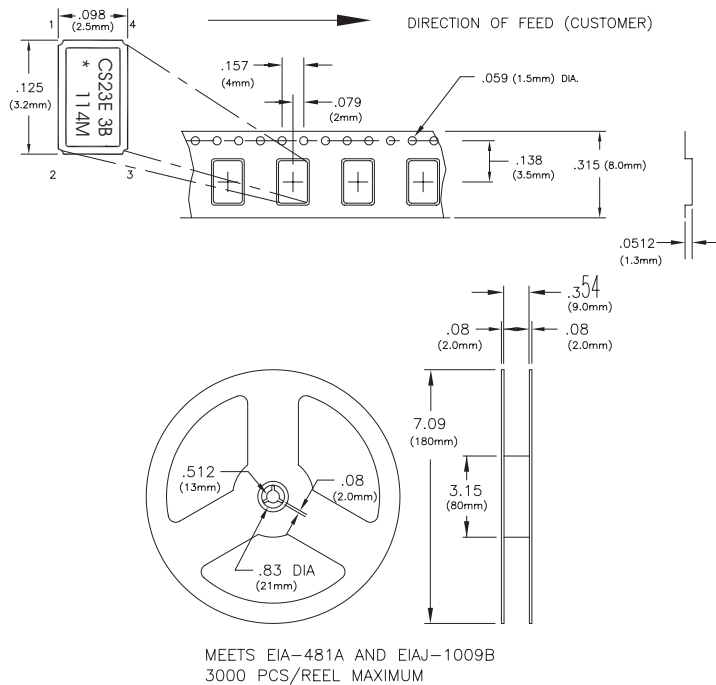
Pad Connections: A diagram showing the internal connection of the capacitor. It is a four-terminal device with terminals 1, 2, 3, and 4. The top and bottom terminals are connected to "GND".

Suggested Pad Layout: A detailed diagram showing the recommended dimensions for the mounting pads. The pads are 0.055 (1.4mm) wide and 0.020 (0.50mm) high. The distance between the pads is 0.047 (1.2mm). The overall width of the pad layout is 0.125 (3.2mm). The top and bottom edges are labeled "GND".

Dimensional Tolerance: ± 0.005 (.127mm)



Tape and Reel Information



Date Code Information

2 Character Date Code

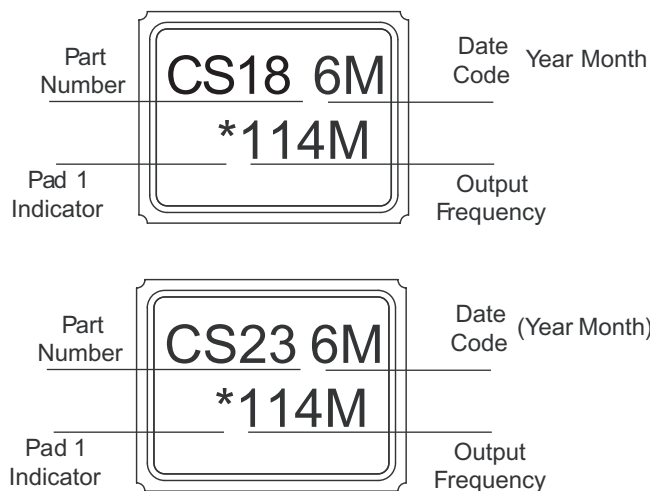
Year Code	Month Code
3 = 2013	A = January
4 = 2014	B = February
5 = 2015	C = March
6 = 2016	D = April
7 = 2017	E = May
8 = 2018	F = June
	G = July
	H = August
	J = September
	K = October
	M = November
	N = December

Date Code Example:

3J

3 = 2013, J = September

Marking Information



Solder Profile

