

PRODUCT NUMBER

5 4 1 0 1 - X X X - X X X X LF

PLATING  
S= 15μ" [0.38μm] GOLD ON CONTACT AREA (NOTE 16)  
100μ" [2.54μm] TIN ON TAIL.  
G= 30μ" [0.76μm] GOLD ON CONTACT AREA (NOTE 16)  
100μ" [2.54μm] TIN ON TAIL.  
T= 100-160μ" [2.54-4.04μm] TIN ON CONTACT AREA AND ON TAIL (SEE NOTE 11 & 15)

RETENTION  
R=RETENTIVE LEG  
NOTE 5 & 7

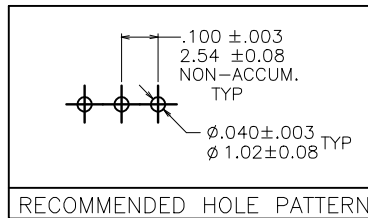
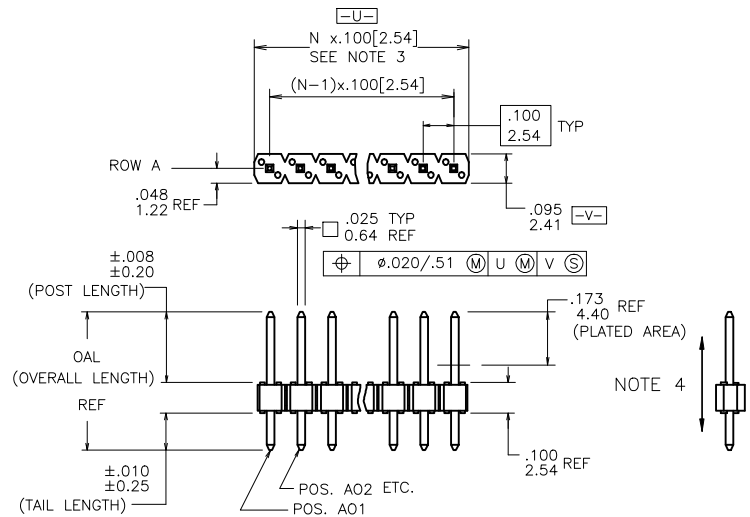
POLARIZATION  
NOTE 7 & 9

BERGSTIK  
POSITIONS PER ROW  
01 TO 36  
NOTE 10

BERGSTRIK  
POSITIONS PER REEL  
00=36,000  
PIN STYLES 5, 6, 8, 10, 30, 32 ONLY.

LEAD FREE  
NOTE 12 & 13

PIN STYLE	POST	TAIL	OAL
05	0.230/5.84	0.095/2.41	0.425/10.80
06	0.230/5.84	0.110/2.79	0.440/11.18
08	0.230/5.84	0.120/3.05	0.450/11.43
10	0.230/5.84	0.150/3.81	0.480/12.19
12	0.230/5.84	0.300/7.62	0.630/16.00
30	0.318/8.08	0.120/3.05	0.538/13.67
32	0.318/8.08	0.150/3.81	0.568/14.43
34	0.318/8.08	0.212/5.38	0.630/16.00



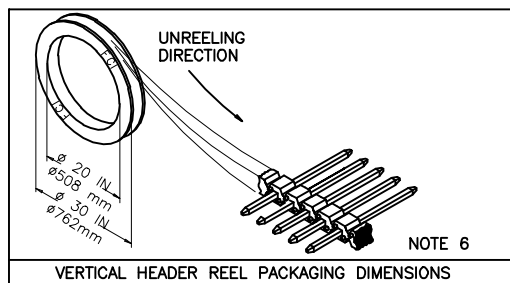
mat'l code SEE NOTES 1 & 2				surface ISO 1302	tolerance ISO 406 ISO 1101	projection	product family BERGSTIK
lir	ecn no	dr	date	angles	linear	INCH/MM	title .100 UNSHROUDED HDR. S/R VERT. THRU HOLE
N	M06-0346	MHT	9/04/06			scale 1:1	dwg no 54101
P	M07-0247	AGS	5/28/07				sheet 1 of 2 size A3
R	M07-0337	MHT	7/23/07	0° ±2'			type Product Customer Drawing
S	M07-0361	MHT	8/14/07	dr	D. INGRAM	05/10/99	
T	M08-0237	MHT	8/25/08	engr	H. SUNDY	07/15/99	
U	M08-0279	MHT	9/30/08	chr	H. SUNDY	07/15/99	
V	M09-0090	MHT	6/19/09	appd	H. SUNDY	07/15/99	
sheet	revision	V	V				
index	sheet	1	2				

NOTES:

- ① HOUSING MAT'L: HIGH TEMPERATURE THERMOPLASTIC. UL94V-0, COLOR: BLACK  
OR  
MINERAL FILLED LCP FLAME RETARDENT  
PER UL-94V-0. COLOR: BLACK.
- ② PIN MATERIAL: PHOSPHOR-BRONZE
- ③ TO DETERMINE DIMENSIONS:  
N = NUMBER OF POSITIONS PER ROW.  
EXAMPLE: 10 POS., N x .100[2.54]=1.00[25.40].
- ④ 2LBS/0.9KG MIN. PIN RETENTION IN EITHER DIRECTION.
- ⑤ RETENTIVE LEG APPLICABLE TO TAIL LENGTH .120/3.05 ONLY. (4 PINS PER PART HAVE RETENTION)  
5LB/2.3KG MAX INSERTION FORCE AND .25LB./1KG MIN RETENTION FORCE PER RETENTIVE PIN  
USING .062/1.57 THICK CIRCUIT BOARD AND RECOMMENDED HOLE PATTERN. RETENTIVE LOCATION  
AT THE DISCRETION OF THE MANUFACTURER. IF FEATURE IS NOT APPLICABLE, REMOVE FROM PRODUCT  
NUMBER, 1x2 OR 1x3 PARTS NOT REFERENCED.
6. BERGSTIK PACKAGED IN POLY BAGS. BERGSTRIK PACKAGED PER REEL.
- ⑦ POLARIZATION AND RETENTION NOT APPLICABLE TO BERGSTRIK.
8. UNDERPLATING: 50μ"/1.27μm Ni.
- ⑨ FOR POLARIZATION SPECIFY POSITION NUMBER (i.e.. A03=ROW A POS. 3)  
TO OMIT PIN.  
IF FEATURE IS NOT APPLICABLE, REMOVE FROM PRODUCT  
NUMBER.
- ⑩ POSITIONS PER ROW 37 TO 50 CAN BE PRODUCED, BUT FLATNESS AND CURVATURE MAY NOT BE HELD  
AS CLOSE AS 36 POSITION.
- ⑪ PIN TIPS ON TIN PLATED PRODUCT MAY HAVE BARE METAL ON TWO SIDS, BOTH ENDS.
- ⑫ PART NUMBERS WITH "LF" AT THE END ARE LEAD FREE.
- ⑬ THIS PRODUCT MEETS EUROPEAN UNION DIRECTIVES AND OTHER  
COUNTRY REGULATION AS DESCRIBED IN GS-22-008.
14. THE HOUSING WILL WITHSTAND EXPOSURE TO 260°C PEAK TEMPERATURE  
FOR 20 SECONDS IN A CONVECTION, INFRA-RED OR VAPOR PHASE REFLOW  
OVEN. SEE APPLICATION NOTES/PROCEDURES IF THEY ARE AVAILABLE OR  
FOR 15 SECONDS IN A WAVE SOLDER APPLICATION WITH A 1.5mm  
MINIMUM THICK CIRCUIT BOARD.
- ⑮ "THIS PRODUCT HAS 100% PURE TIN PLATING IN THE INTERFACE AND  
HAS NOT BEEN TESTED FOR WHISKER GROWTH IN ALL INTERCONNECT  
ENVIRONMENTS."
- ⑯ PLATING OPTIONS:  
MAY BE EITHER GOLD OR GXT PLATED AT MANUFACTURER'S OPTION.

Cross Reference

CORE RANGE	EXTENDED RANGE
77311-101-XXLF	54101-G05XXLF
77311-801-XXLF	54101-S05XXLF
77311-118-XXLF	54101-G08XXLF
77311-818-XXLF	54101-S08XXLF



mat'l. code	SEE NOTES 1 & 2	surface	ISO 1302	tolerance	ISO 406	projection	product family	BERGSTIK
ltr	ecr no	dr	date	tolerances unless otherwise specified			title	.100 UNSHROUDED HDR.
v				angles	linear	INCH/MM		S/R VERT. THRU HOLE
				0°±2'	XXX±.01/XX±0.3	scale 1:1	dwg no	54101
				dr	D.INGRAM	05/10/99	sheet 2 of 2	size A3
				engr	H.SUNDY	07/15/99		
				chr	H.SUNDY	07/15/99		
				appd	H.SUNDY	07/15/99		
sheet	revision						type	Product Customer Drawing
index	sheet							