



HAMMOND
MANUFACTURING®

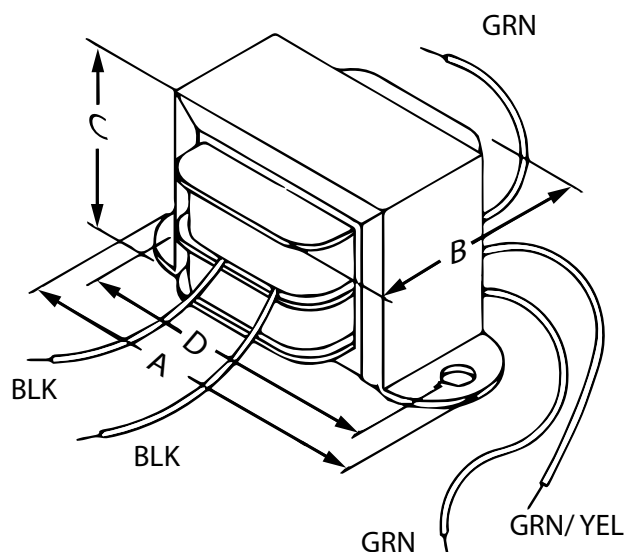
www.hammondmfg.com

166F36A

Power Transformer - Low Voltage/ Filament
Economical Single Primary - Open Style Chassis Mount

Features

- Economical single primary 115 VAC, 60 Hz. (or 117 50/60 Hz. see table below)
- Open style, channel bracket, chassis mount.
- Minimum 6" long leads.
- Dual bobbin design - no electrostatic shield required.
- Class B insulation (130 degrees, C) for extra protection - **UL listed** as a Class A (105 degree, C) design
- Hi-Pot test of 2,000V RMS.
- **CSA certified.**



Overall Dimensions (in. / mm)	
A	2.81 / 71.4
B	1.63 / 41.4
C	1.69 / 42.9
Hole to Hole Mounting Dims	
D	2.38 / 60.5
E	/
Mounting Hole Sizes	
Width-wise	0.187 / 4.7
Depth-wise	/
Electrical	
Size (VA)	10.8
Primary	117V 50/60 Hz.
Secondary VAC	36 C.T.
Secondary Amps	0.3

Schematic

