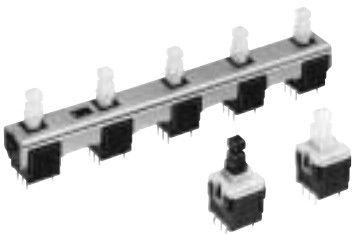


Soft Sound Type Push Switches

Japan

Type: **ESB30 (H=12.5 mm)**

Mechanism low noise by using multiple keys and an individual key



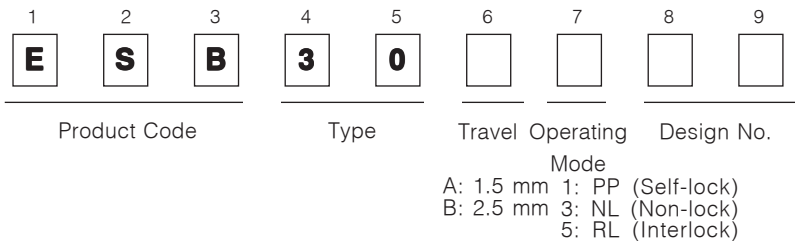
■ Features

- Reduced interlock operation switching noise (-10 dB compared to the current value)
- Simultaneous locking prevention mechanism
- Tactile feedback when operated
- A wide range of acceptable currents from microcomputer control to relay control signals

■ Recommended Applications

- Operation switches for Automobiles (e.g., heater control switches, etc.)
- Secondary power switches for lower voltage in Consumer Electronic Equipment and different types of mode switches

■ Explanation of Part Numbers



■ Major Specifications

Rating	5 μA 3 Vdc to 0.2 A 14 Vdc (Resistive load)
Travel	Lock Travel=1.5 mm Full Travel=2.5 mm Lock Travel=2.5 mm Full Travel=3.5 mm
Mounting Height	12.5 mm
Poles and Throws	2-poles 2-throws
Operating Mode	Self-lock, Non-lock, Interlock
Switching Mode	Non-shorting
Operating Force	2.0 N±1.0 N, 3.5 N±1.5 N
Minimum Quantity/Packing Unit	480 pcs. (Tray Pack)
Quantity/Carton	2400 pcs.

* The figure shown above apply only to single-key types. Consult our sales staff for multiple-key types.

■ Standard Products

Operating Force	Lever Height	Lock Travel	Operating Mode	Detent	Terminal Shape	
					Straight	Formed
2 N	22.5 mm	1.5 mm	PP	With	ESB30A102	ESB30A103
				Without	ESB30A104	ESB30A105
			NL	With	ESB30A302	ESB30A303
				Without	ESB30A304	ESB30A305
	20.5 mm	2.5 mm	PP	With	ESB30B101	ESB30B106
				Without	ESB30B132	ESB30B102
			NL	With	ESB30B301	ESB30B303
				Without	ESB30B304	ESB30B305
3 N	22.5 mm	1.5 mm	PP	Without	ESB30A132	ESB30A133
			NL		ESB30A332	ESB30A333
3.5 N	20.5 mm	2.5 mm	PP		ESB30B103	ESB30B133
			NL		ESB30B332	ESB30B333

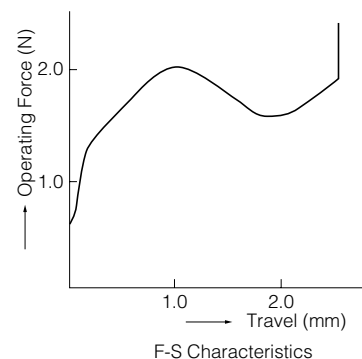
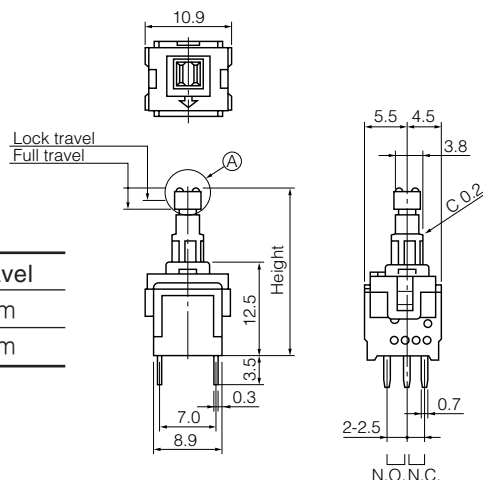
Note: PP=Self-lock, NL=Non-lock

■ Dimensions in mm (not to scale)

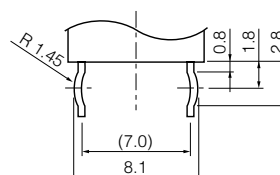
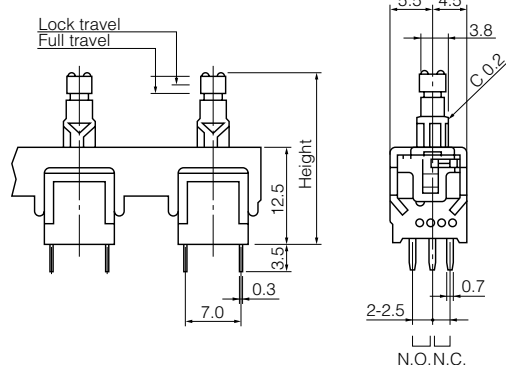
No. 1

- Single key
- ESB30A102**
2-poles 2-throws

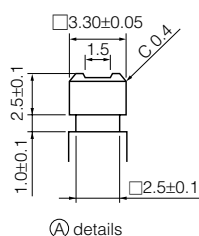
Lock Travel	Full Travel
1.5 mm	2.5 mm
2.5 mm	3.5 mm



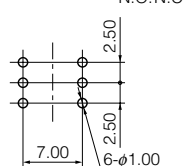
- Multiple unit
- ESB30A502
2-poles 2-throws



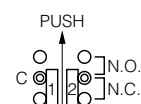
Forming dimension of terminal
(Except for common terminal)



Ⓐ details



Recommended
PWB piercing plan
(Tolerance:±0.05)
View from terminal side



Circuit diagram
(View from terminal side)