

**Ordering number FCN11257\_LED1-RS**

Family	Leila	FWHM	7 degrees
Type	Pack	Efficiency	-
LED	Golden Dragon+	cd/Im	-
Color	White	Gerber File	Available
Diameter	21.6 mm		
Height	14.6 mm		
Style	Round		
Optic Material	PMMA		
Holder Material	PC		
Fastening	Glue		
Status	On production		

**Ordering number FCN11259\_LED1-D**

Family	Leila	FWHM	11 degrees
Type	Pack	Efficiency	-
LED	Golden Dragon+	cd/Im	-
Color	White	Gerber File	Available
Diameter	21.6 mm		
Height	14.6 mm		
Style	Round		
Optic Material	PMMA		
Holder Material	PC		
Fastening	Glue		
Status	On production		

**Ordering number FCN11258\_LED1-M**

Family	Leila	FWHM	26 degrees
Type	Pack	Efficiency	-
LED	Golden Dragon+	cd/Im	-
Color	White	Gerber File	Available
Diameter	21.6 mm		
Height	14.6 mm		
Style	Round		
Optic Material	PMMA		
Holder Material	PC		
Fastening	Glue		
Status	On production		

**Ordering number FCN11466\_LED1-M2**

Family	Leila	FWHM	28 degrees
Type	Pack	Efficiency	95 %
LED	Golden Dragon+	cd/Im	3.300
Color	White	Gerber File	Available
Diameter	21.6 mm		
Height	14.6 mm		
Style	Round		
Optic Material	PMMA		
Holder Material	PC		
Fastening	Glue		
Status	On production		

**Ordering number FCN11262\_LED1-REC**

Family	Leila	FWHM	38+24 degrees
Type	Pack	Efficiency	-
LED	Golden Dragon+	cd/lm	-
Color	White	Gerber File	Available
Diameter	21.6 mm		
Height	14.6 mm		
Style	Round		
Optic Material	PMMA		
Holder Material	PC		
Fastening	Glue		
Status	On production		

**Ordering number FCN11260\_LED1-O**

Family	Leila	FWHM	41+12 degrees
Type	Pack	Efficiency	-
LED	Golden Dragon+	cd/lm	-
Color	White	Gerber File	Available
Diameter	21.6 mm		
Height	14.6 mm		
Style	Round		
Optic Material	PMMA		
Holder Material	PC		
Fastening	Glue		
Status	On production		

**NOTE: The typical divergence will be changed by different color, chip size and chip position tolerance. The typical total divergence is the full angle measured where the luminous intensity is half of the peak value.**



## PRODUCT DATASHEET

### Leila series

last update 25/5/2012



#### GENERAL INFORMATION

- Product series especially designed & optimized for Golden Dragon+ series of LEDs.
- Special care taken to make light distribution as uniform as possible.
- Lens material optical grade PMMA with high UV and temperature resistance. Allows use of high current and temperature conditions.

Please find more information about used material from below:

[http://ledil.fi/sites/default/files/Documents/Technical/Material/PMMA%20N%20UL94\\_Yellow%20Card.pdf](http://ledil.fi/sites/default/files/Documents/Technical/Material/PMMA%20N%20UL94_Yellow%20Card.pdf)

<http://ledil.fi/sites/default/files/Documents/Technical/Material/PMMA%20N%20PLEXIGLAS-Datasheet.pdf>

- Optic holder molded by high quality PC material (120 degrees of Celcius / 248 degrees of Fahrenheit).

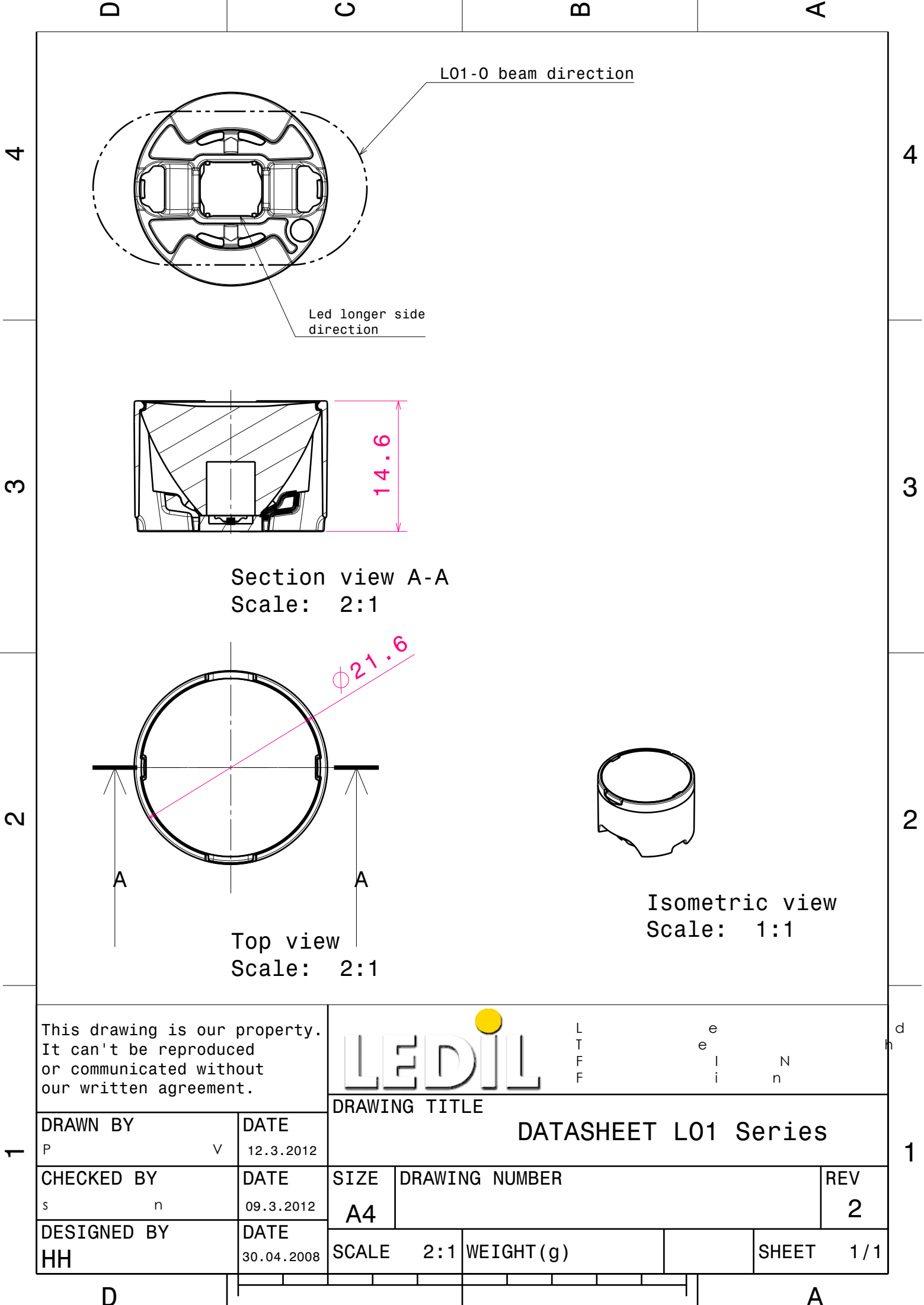
- Fastening to PCB with appropriate adhesive. By clicking link below you can find Ledil recommended glue options.

[http://www.ledil.com/datasheets/DataSheet\\_GLUES.pdf](http://www.ledil.com/datasheets/DataSheet_GLUES.pdf)

**NOTE 1: We advise customer to ensure the suitability and sufficiency of the bond in the end product. For example, mechanical stress, vibration and holes on the surface of the circuit board weaken the strength of the glue.**

**NOTE 2: All surfaces where glue is applied must be clean, dry and free from grease and dirt. If cleaning of PCB surfaces is needed, please follow strictly the cleaning instructions of your LED manufacturer -this is important as cleaning shall under no circumstances damage LEDs or other electronics components on the PCB.**

**Further note that optical components shall not be cleaned with any chemicals - only micro fiber cloth may be used to remove fingerprints or other traces from handling.**



This drawing is our property.  
It can't be reproduced  
or communicated without  
our written agreement.



L  
T  
F  
F

e  
e  
l  
i  
n

N

d  
h

DRAWING TITLE

DATASHEET L01 Series

DRAWN BY

P

V

DATE

12.3.2012

CHECKED BY

s

n

DATE

09.3.2012

DESIGNED BY

HH

DATE

30.04.2008

SIZE

A4

DRAWING NUMBER

REV

2

SCALE

2:1

WEIGHT (g)

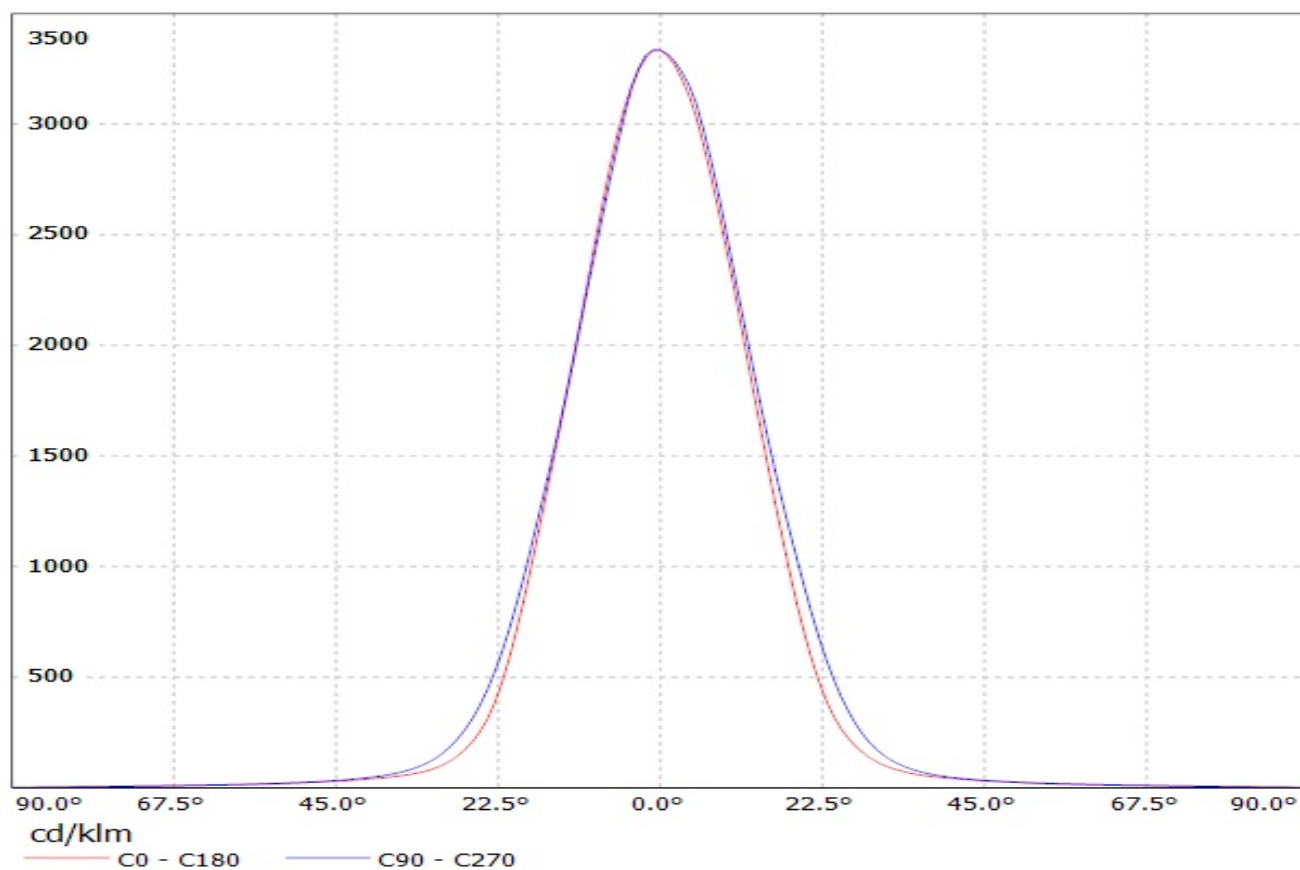
SHEET

1/1

D

A

Luminaire: LEDIL OY FCN11466\_LO1-M2 (Osram Golden Dragon +) Efficiency=95%  
Lamps: 1 x Osram Golden Dragon (66lm@250mA)



Luminaire: LEDIL OY FCN11466\_LO1-M2 (Osram Golden Dragon +) Efficiency=95%  
Lamps: 1 x Osram Golden Dragon (66lm@250mA)

