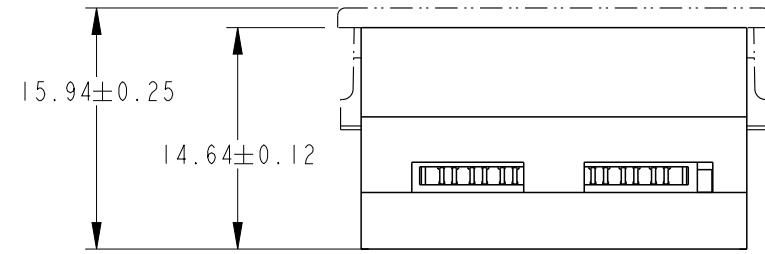
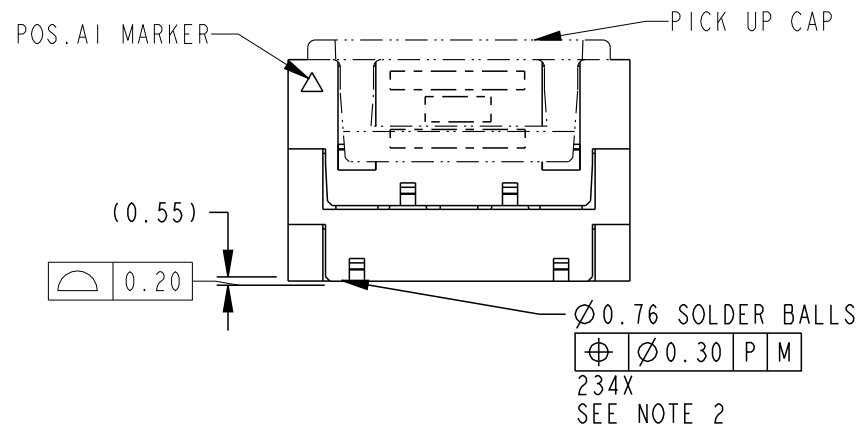
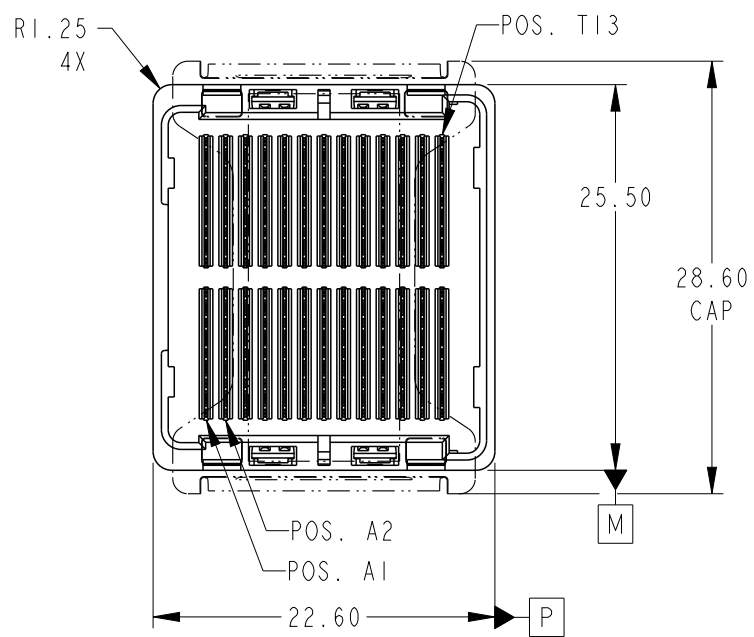




Copyright FCI.



spec ref				dr	Tao Zhan	2012/11/14	<div>projection</div> <div></div>	<div>MM</div> <div></div>	size	A4	scale	2:1	
tolerance std	TOLERANCES UNLESS OTHERWISE SPECIFIED			eng	Sky Chen	2013/10/17			ecn no	-			
				chr	-	-							
				appr	Pei-Ming Zheng	2013/10/17			product family		GIG-Array	rel level	
surface <div>✓</div>	linear	0.X	±0.30	<div></div>	title			GIG-Array	dwg no	10098180		rev	A
		0.XX	±0.20										
		0.XXX	±0.10										
	angular	0°	±2°	www.fci.com	cat. no.		-	Product - Customer Drw			sheet 1 of 4		

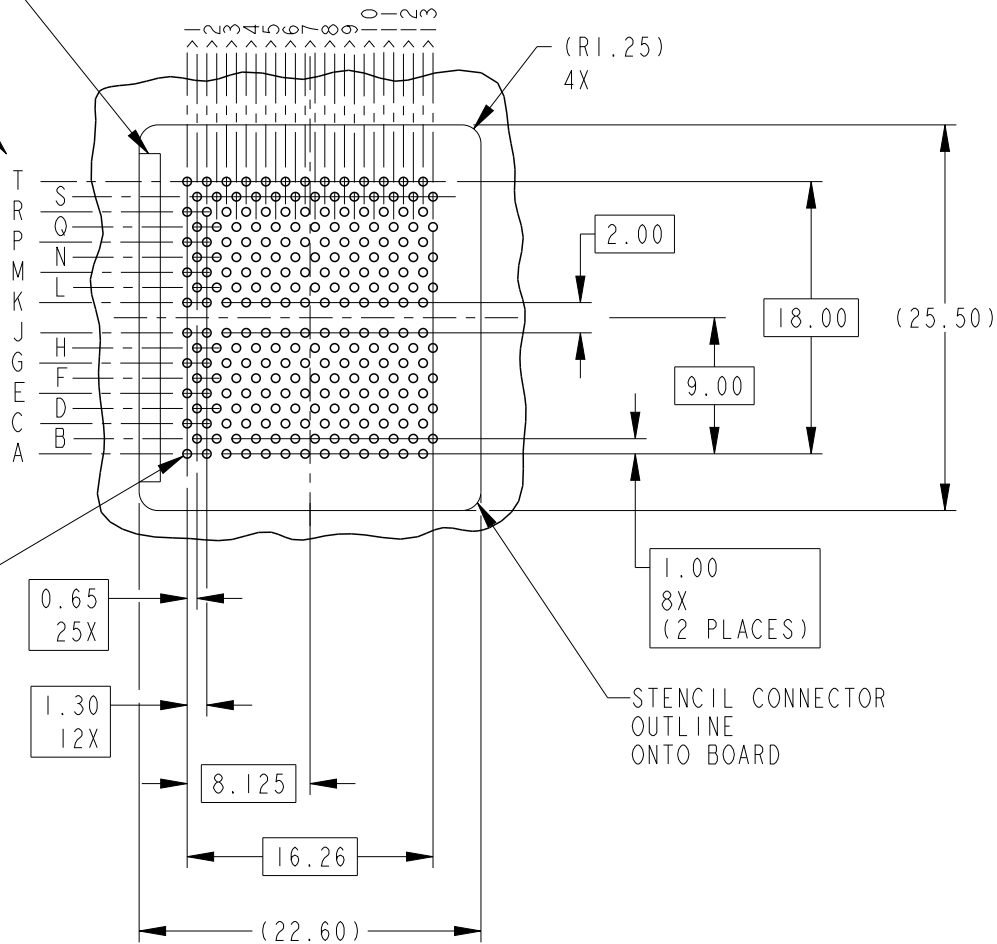
ProjE File - REV C - 2009-06-09

KEY ORIENTATION SILKSCREEN
(OPTIONAL)

SEE NOTES 4 & 5

④ CONTACTS IN
ROWS J & K ARE
TIED TOGETHER
(COMMONED)

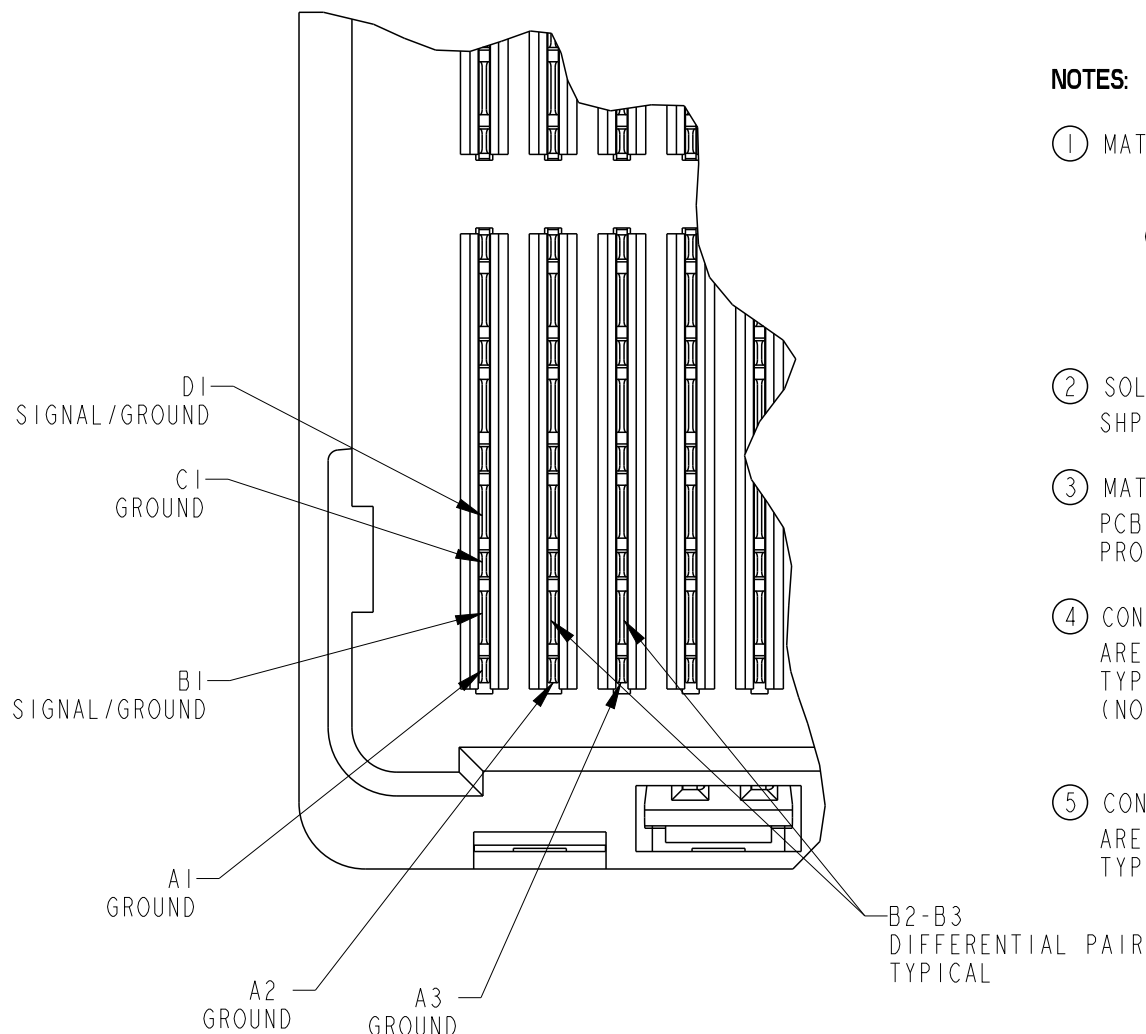
Ø 0.60
Ø 0.55
Ø 0.10 N
PAD SIZE
234X
SEE NOTE 6



spec ref				dr	Tao Zhan	2012/11/14	projection 	MM 	size	A4	scale	2:1
tolerance std	TOLERANCES UNLESS OTHERWISE SPECIFIED			eng	Sky Chen	2013/10/17			ecn no	-		
				chr	-	-						
				appr	Pei-Ming Zheng	2013/10/17					product family	
surface - 	linear	0.X	±0.30		title GIG-Array 15mm PLUG ASSY. 104 SIG. POS.			dwg no	10098180		rev A	
		0.XX	±0.20									
		0.XXX	±0.10									
	angular	0°	±2°	www.fci.com	cat. no.		-	Product - Customer Drw		sheet 2 of 4		



Copyright FCI.



NOTES:

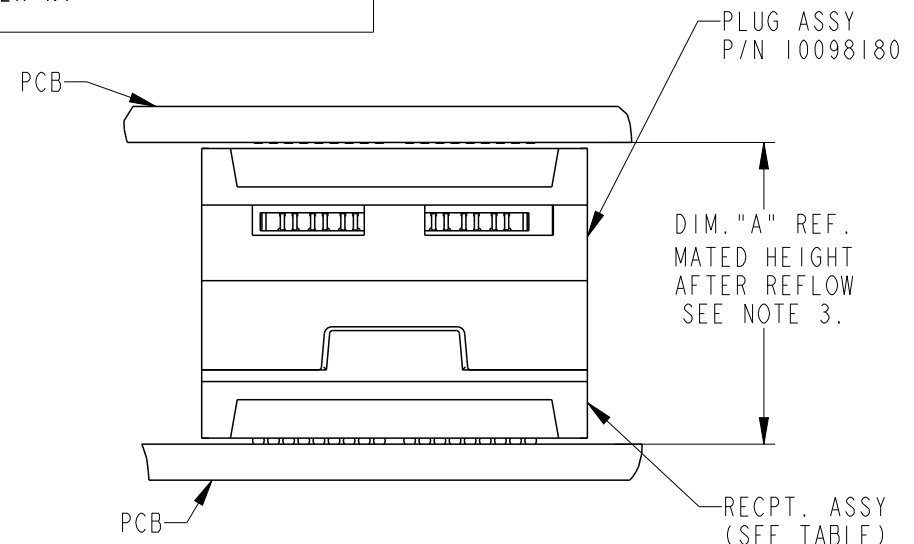
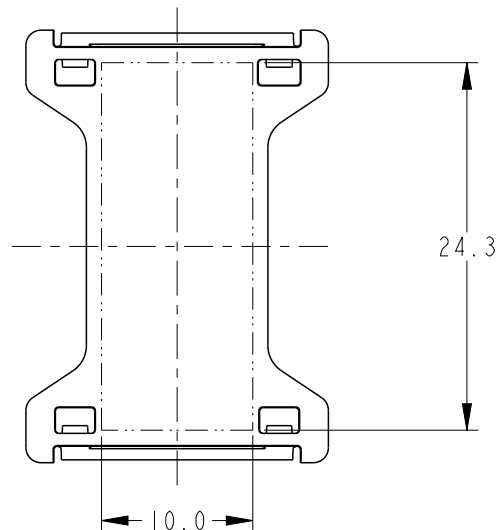
- ① MAT'L:
HOUSING: LCP
UL RATING: 94 V-0
CONTACT: COPPER ALLOY
PLATING (CONTACT): Au OVER Ni.
SOLDERBALL: (SEE TABLE) EUTECTIC
SnPb OR LEAD FREE 95.5 Sn/4Ag/0.5Cu.
- ② SOLDER BALLS WILL NOT BE PERFECT SPHERICAL SHAPE DUE TO REFLOW ATTACHMENT.
- ③ MATED HEIGHT EFFECTED BY CUSTOMERS' PCB PAD SIZE, PLATING, SOLDER REFLOW PROFILE & SOLDER PASTE.
- ④ CONTACTS IN ROWS A,C,E,G,J,K,M,P,R AND T ARE SINGLE BEAM CONTACTS, TYPICALLY USED AS GROUND PINS.
(NOTE: CONTACTS IN ROWS J & K ARE TIED TOGETHER [COMMONED])
- ⑤ CONTACTS IN ROWS B,D,F,H,L,N,Q AND S ARE DUAL BEAM CONTACTS, TYPICALLY USED AS SIGNAL PINS.

PLUG INTERFACE DESCRIPTION

spec ref				dr		Tao Zhan	2012/11/14	projection		MM		size		A4	scale		7:1																
tolerance std		TOLERANCES UNLESS OTHERWISE SPECIFIED				eng		Sky Chen	2013/10/17					ecn no				-															
						chr		-	-																								
						appr		Pei-Ming Zheng	2013/10/17											product family				GIG-Array				rel level				Released	
surface				linear		0.X		±0.30				title		GIG-Array				dwg no		10098180				rev		A							
																												0.XX		±0.20			
																												0.XXX		±0.10			
																												angular		0°		±2°	

PRODUCT NUMBER	SOLDER BALL COMPOSITION	CONTACT PLATING PERFORMANCE LEVEL
10098180-001	STAND (EUTECTIC)	PERFORMANCE-BASED PLATING, QUALIFIED TO MEET THE REQUIREMENTS OF FCI PRODUCT SPECIFICATION GS-12-192, INCLUDING TELCORDIA CENTRAL OFFICE
10098180-001LF	LEADFREE	
10098180-201	STAND (EUTECTIC)	
10098180-201LF	LEADFREE	
		Au OVER Ni

FLAT AREA
FOR OPTIONAL
PICK-UP CAP



END VIEW OF MATED CONNECTORS

DIM. "A"	RECPT. ASSY. P/N
20	10014370

6. SPECIFIED POSITIONAL TOLERANCE DEFINES PAD TO PAD LOCATION WITHIN LAND PATTERN. POSITIONAL TOLERANCE OF LAND PATTERN TO FUDICIAL MARKS OR PCB DATUMS SHALL BE DEFINED BY CUSTOMER. FOR RECOMMENDED PRODUCT APPLICATION AND PCB DESIGN DETAILS, SEE DOC. NO. GS-20-016.
7. FOR PROPER APPLICATION FOLLOW FCI APPLICATION SPECIFICATION GS-20-033. LEAD FREE SOLDER BALLS WILL NOT SOLDER PROPERLY IN A LEADED SOLDER PROCESS DUE TO A HIGHER REFLOW TEMPERATURE. LEADFREE PRODUCT IS THEREFORE NOT BACKWARDS COMPATIBLE WITH LEADED OR SOME SOLDERING APPLICATIONS. REFERENCE FCI APPLICATION SPECIFICATION.

8. THIS PRODUCT MEETS THE EUROPEAN UNION DIRECTIVES AND OTHER COUNTRY REGULATIONS AS DESCRIBED IN GS-22-008. PRODUCT MEETING THIS DIRECTIVE IS IDENTIFIED IN THE CODE NUMBER MARKED ON EACH PART BY HAVING AN "X" IN THE SEVENTH CHARACTER POSTION.

spec ref				dr		Tao Zhan	2012/11/14	<div>projection</div> <div></div>	<div>MM</div> <div></div>	size	A4	scale	2:1	
tolerance std	TOLERANCES UNLESS OTHERWISE SPECIFIED			eng		Sky Chen	2013/10/17			ecn no				-
				chr		-	-							
				appr		Pei-Ming Zheng	2013/10/17			product family			GIG-Array	rel level
surface	linear	0.X	±0.30		title				GIG-Array	dwg no	10098180		rev	A
		0.XX	±0.20											
		0.XXX	±0.10											
	angular	0°	±2°	www.fci.com		cat. no.			Product - Customer Drw			sheet 4 of 4		