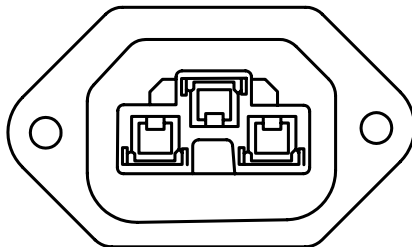
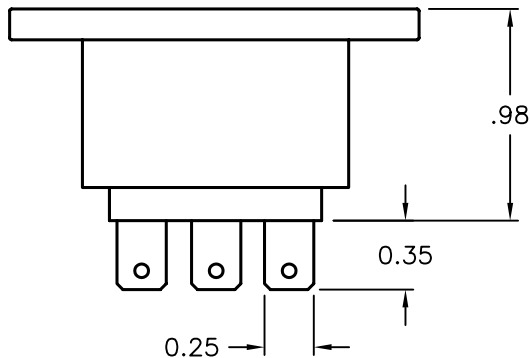
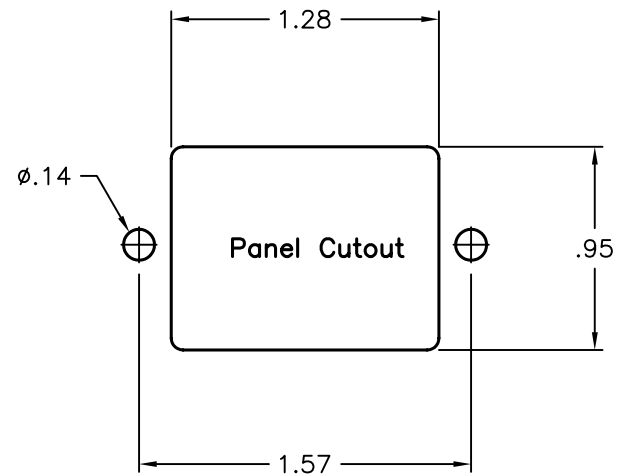
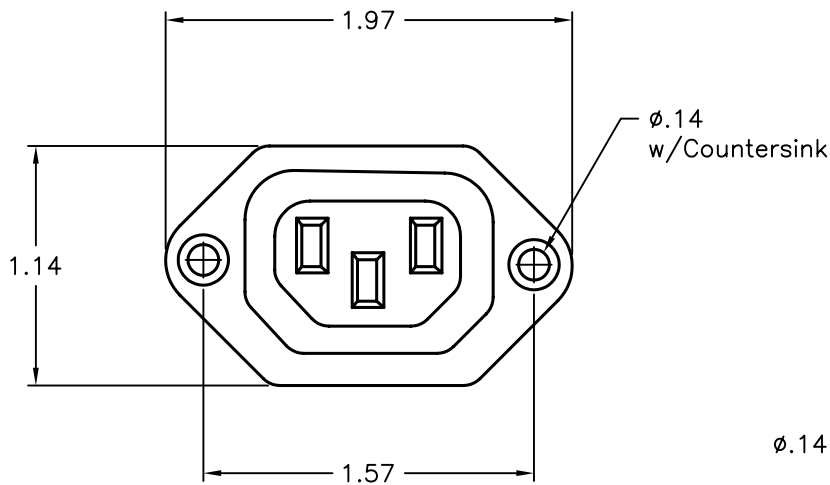


DCP #	REV	DESCRIPTION	DRAWN	DATE	CHECKD	DATE	APPRVD	DATE
1269	A	RELEASED	JWM	12/2/02	HO	12/2/02	DJC	12/2/02
1811	B	RoHS ADDED	DCM	12/22/05	JWM	12/22/05	JWM	12/22/05


RoHS
Compliant


Material:

Housing: Thermoplastic

Terminal: Copper Alloy

Characteristics:

Rating: 15A 250V AC

Insulation Resistance: Over 100 Ohm 500VDC

Dielectric Strength: 2000VAC One Minute

Approvals:

UL, CSA, VDE, SEMKO, DEMKO,
NEMKO, SETI, CB and SEV, FIMKO

SPC-F004.DWG

TOLERANCES:

UNLESS OTHERWISE
SPECIFIED,
DIMENSIONS ARE
FOR REFERENCE
PURPOSES ONLY.

DRAWN BY:

Jeff McVicker

DATE:

12/2/02

CHECKED BY:

Hisham Odish

DATE:

12/2/02

APPROVED BY:

Daniel Carey

DATE:

12/2/02

DRAWING TITLE:

AC Power Outlet IEC 320 - C13

SIZE

A

DWG. NO.

2154

ELECTRONIC FILE

92N4157

REV

B

SCALE: NTS

U.O.M.: INCHES [mm]

SHEET: 1 OF 1