



ALL RIGHTS RESERVED. NO PORTION OF THIS PUBLICATION, WHETHER IN WHOLE OR IN PART CAN BE REPRODUCED WITHOUT THE EXPRESS WRITTEN CONSENT OF SPC TECHNOLOGY.

SPC-F005.DWG

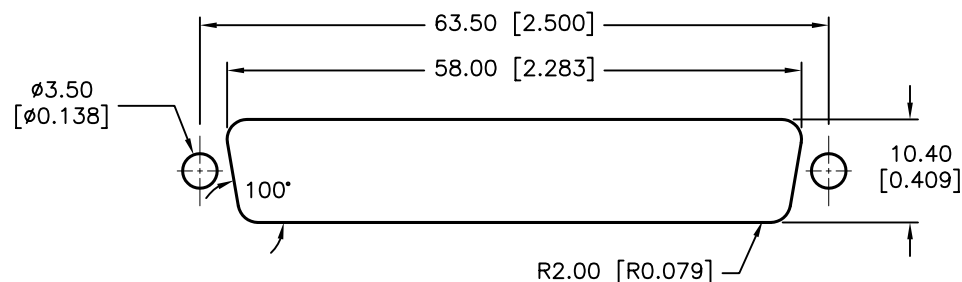
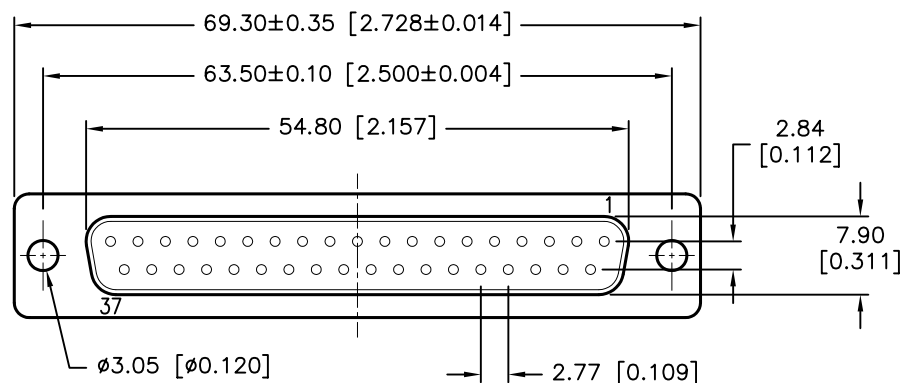
REVISIONS

DOC. NO. SPC-F005 * Effective: 7/8/02 * DCP No: 1398

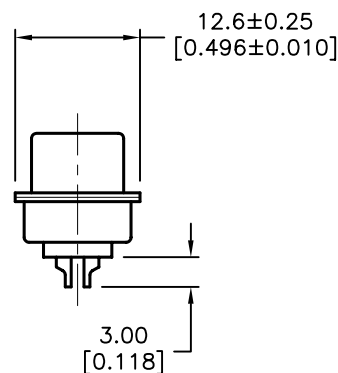
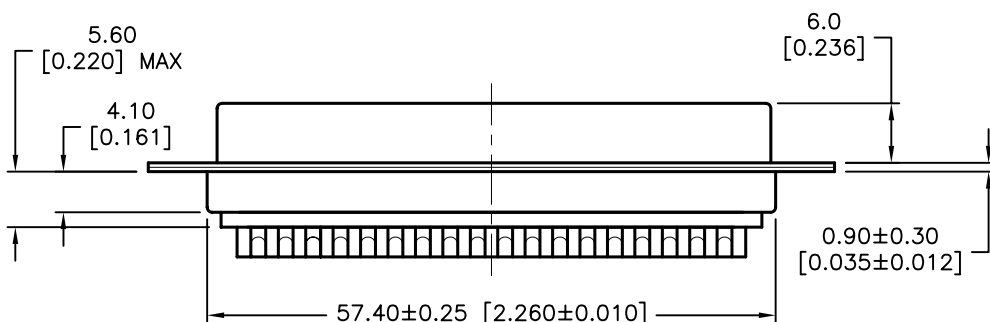
DCP #	REV	DESCRIPTION	DRAWN	DATE	CHECKD	DATE	APPRVD	DATE
1876	A	RELEASED	EO	07/25/06	SA	07/25/06	HO	07/25/06



RoHS
Compliant



PANEL CUTOUT



SPECIFICATIONS:

Shell: Steel, Zinc Yellow- Chromated
Insulator: PBT+30% Fiber-Glass UL 94V-0, Blue Color
Contact: Brass, Stamped, Gold-Plated on Contact Area Tin-Plated on Solder Cup
Current Rating: 5 Amps
Contact Resistance: 15 milliohms Max.
Insulator Resistance: 1000 Megohms Min.
Voltage: 500 VAC for 1 Minute
Temperature: -50°C to +100°C

DISCLAIMER:
ALL STATEMENTS AND TECHNICAL INFORMATION CONTAINED HEREIN ARE BASED UPON INFORMATION AND/OR TESTS WE BELIEVE TO BE ACCURATE AND RELIABLE. SINCE CONDITIONS OF USE ARE BEYOND OUR CONTROL, THE USER SHALL DETERMINE THE SUITABILITY OF THE PRODUCT FOR THE INTENDED USE AND ASSUME ALL RISK AND LIABILITY WHATSOEVER IN CONNECTION THEREWITH.

TOLERANCES:

Unless Otherwise Specified

.X ±0.35 [0.014]
.XX ±0.15 [0.006]

DRAWN BY:

EKLAS ODISH

CHECKED BY:

SAMI ALNADI

APPROVED BY:

HISHAM ODISH

DATE:

07/25/06

DATE:

07/25/06

DATE:

07/25/06

DRAWING TITLE:

37 Pin D-Sub Solder Socket, Stamped Contacts

SIZE

A

DWG. NO.

SPC15211

ELECTRONIC FILE

79K4813.DWG

REV

A

SCALE: NTS

U.O.M.: mm [INCHES]

SHEET: 1 OF 1