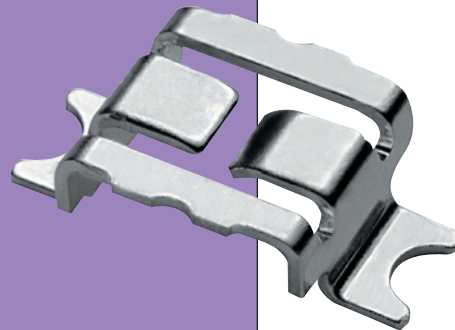


# SMT Fuse Clip

## for Mini Blade Fuses

- ❖ Suitable for mating with a 2.8 x 0.8mm terminal.
- ❖ Designed to accept blade fuses typically found in automotive and related applications if placed in a pair.
- ❖ Uses minimal PCB real estate with a low profile connection.
- ❖ Resists shock and vibration.
- ❖ Reduced assembly times.
- ❖ 15 Amp current rating.

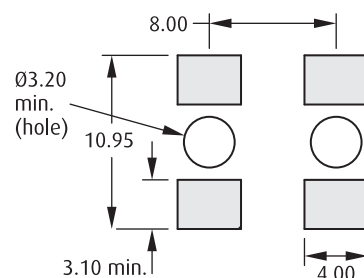
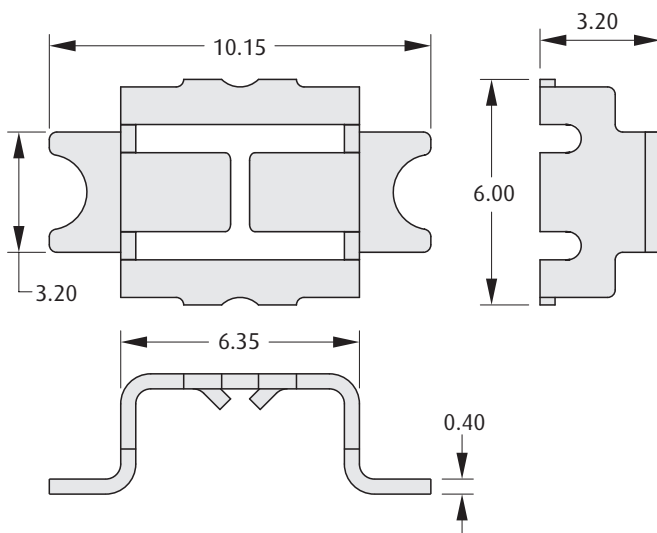


### Materials

Material: Copper Alloy  
Finish: See Order Code

### Packaging

Format: Tape and Reel or Loose  
Reel quantity: 1,500 on a Ø330mm reel



Recommended PC Board Pattern

### HOW TO ORDER

**S1901 - XX R**

#### SERIES CODE

FINISH		
06	Tin/Lead	
46	Tin	

#### PACKAGING

R	Tape & Reeled
Blank	Loose

All dimensions in mm.

[www.harwin.com](http://www.harwin.com)



# Mouser Electronics

Authorized Distributor

Click to View Pricing, Inventory, Delivery & Lifecycle Information:

Harwin:

S1901-06R