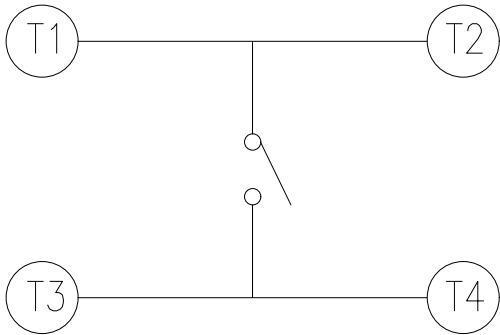
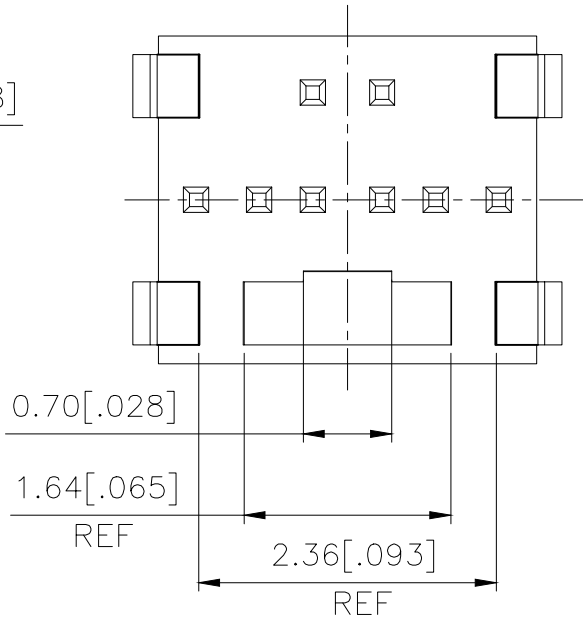
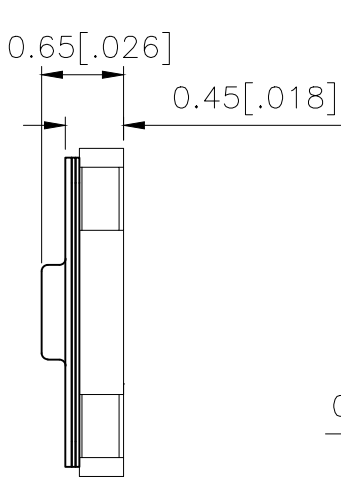
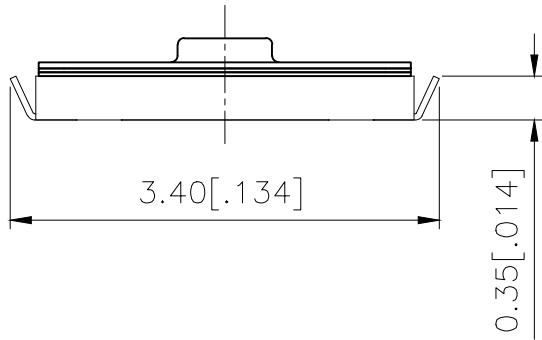
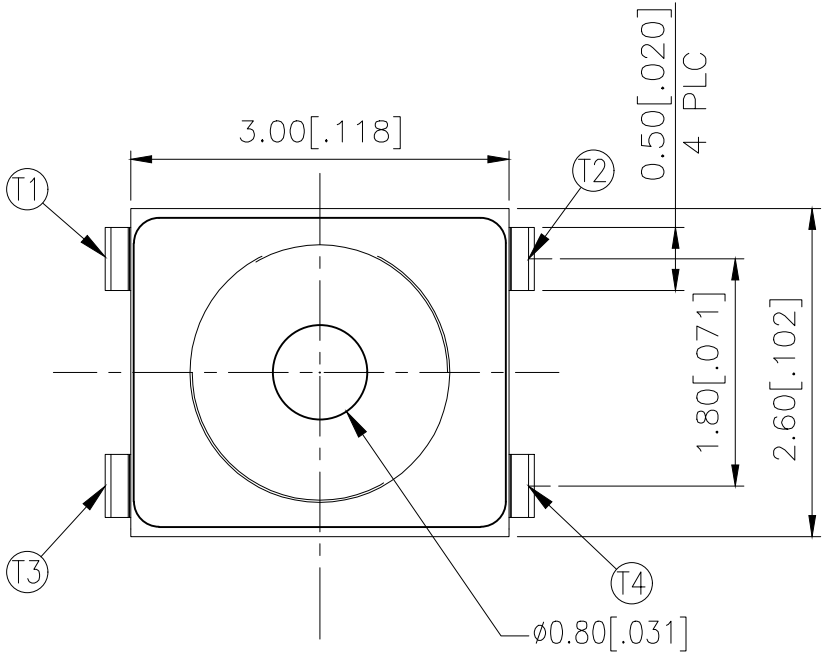
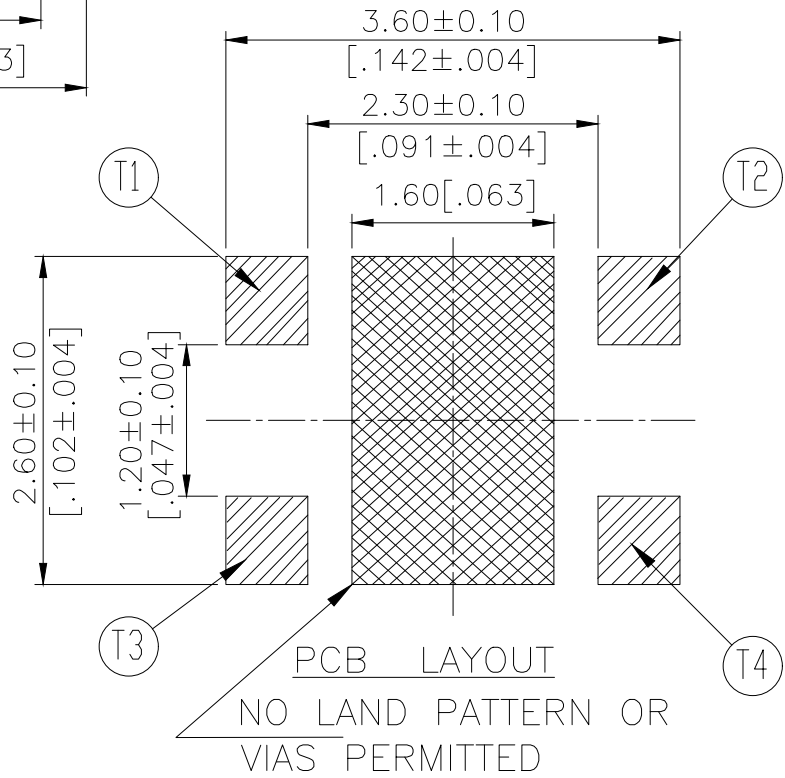


REVISIONS					
P	LTR	DESCRIPTION	DATE	DWN	APVD
	1	NEW DRAWING	04JUL2018	GCM	AS



CIRCUIT DIAGRAM



160±50	USLPT3026EL2TR	2337228-2
100±50	USLPT3026EL1TR	2337228-1
ACTUATION FORCE (gf)	SMART PART NUMBER	PART NUMBER

THIS DRAWING IS A CONTROLLED DOCUMENT.		DWN 04JUL2018 GANESH C M	<div>PRELIMINARY</div> <div>TE Connectivity Ltd.</div> <div>SWITCH, TACTILE, LOW-PROFILE, ULTRA-MINI, 3.0 x 2.6 x 0.65, J BEND</div>		
DIMENSIONS: mm [INCHES]		CHK 04JUL2018 ALEXANDER SHARPE			
TOLERANCES UNLESS OTHERWISE SPECIFIED:		APVD 04JUL2018 ALEXANDER SHARPE			
MATERIAL		PRODUCT SPEC			
FINISH		APPLICATION SPEC	NAME		
		WEIGHT	SIZE CAGE CODE DRAWING NO RESTRICTED TO		
		CUSTOMER DRAWING	A300779 C-2337228		
		SCALE NTS	SHEET 1 of 3 REV 1		

PRELIMINARY



