

CHARACTERISTICS

MATERIALS

HOUSING : ABS+PC

HOUSING COLOR : GREY

NUT : BRASS

NUT PLATING : NICKEL

CONTACTS : COPPER ALLOY

CONTACT PLATING : 7µ" GOLD PLATED OVER 196µ" NICKEL MIN.

INSULATOR : PPS (HIGH TEMPERATURE)

MECHANICAL

DURABILITY: 2000 CYCLES

OPERATING TEMP. RANGE: -20° C ~ +120° C

PROCESS TEMPERATURE : 260°C FOR 5 SECONDS

MAX. TORQUE VALUE : 0.7 Nm [6.19 IN/lbs]

IP RATING: 50

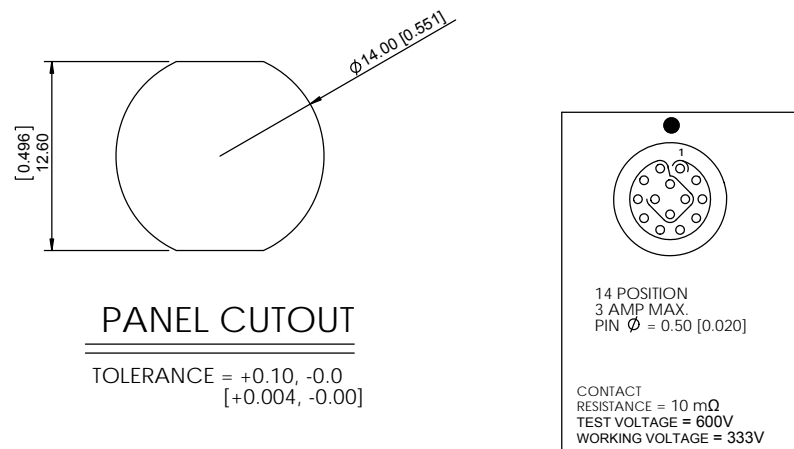


CHART A

● = KEY LOCATION

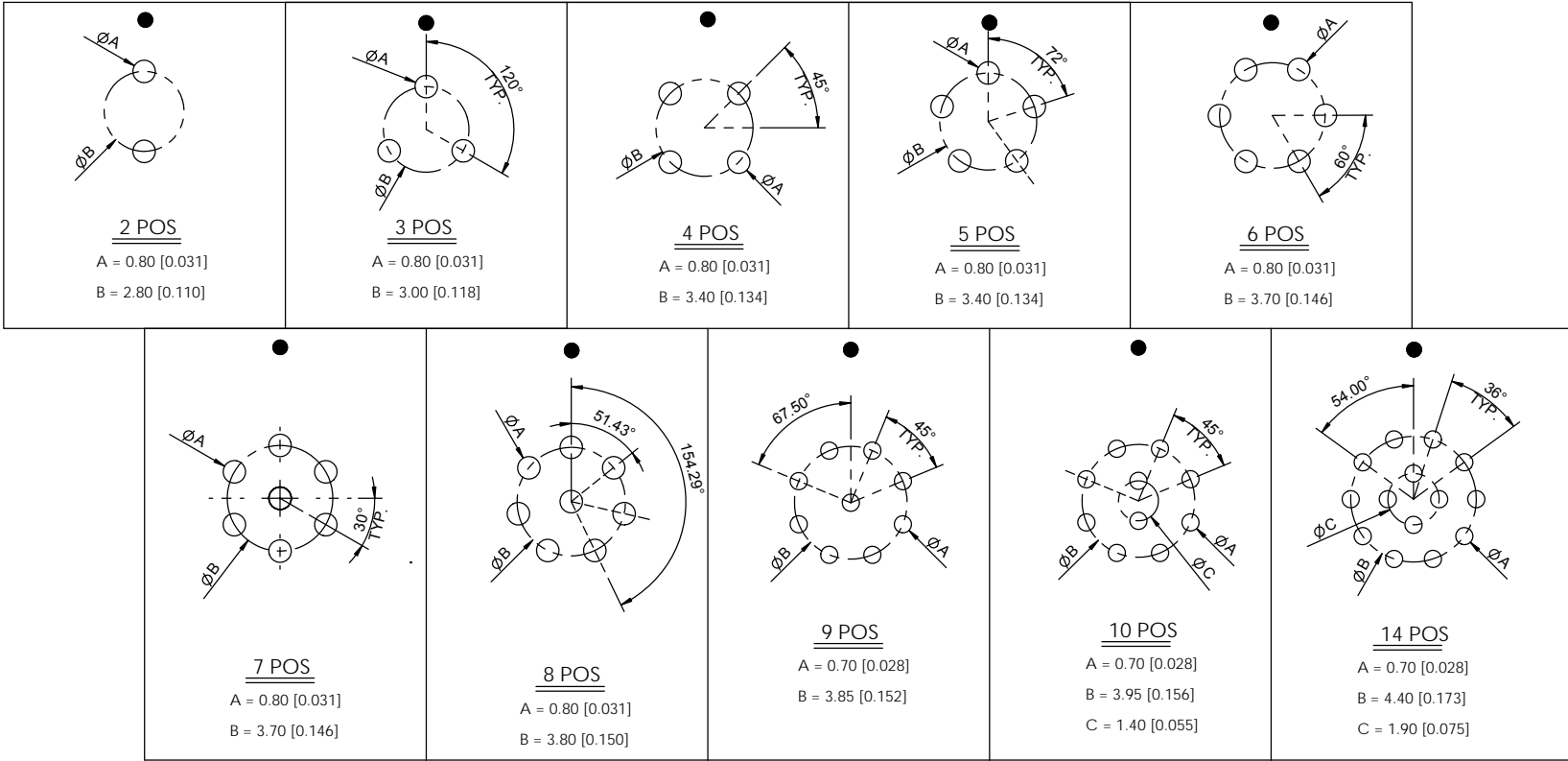
VIEW FROM TERMINATION END

<div>2 POSITION 10 AMP MAX. PIN Ø = 1.30 [0.051]</div> <div>CONTACT RESISTANCE = 5 mΩ TEST VOLTAGE = 1250V WORKING VOLTAGE = 500V</div>	<div>3 POSITION 10 AMP MAX. PIN Ø = 1.30 [0.051]</div> <div>CONTACT RESISTANCE = 5 mΩ TEST VOLTAGE = 1250V WORKING VOLTAGE = 500V</div>	<div>4 POSITION 8 AMP MAX. PIN Ø = 0.90 [0.035]</div> <div>CONTACT RESISTANCE = 6 mΩ TEST VOLTAGE = 1250V WORKING VOLTAGE = 500V</div>	<div>5 POSITION 8 AMP MAX. PIN Ø = 0.90 [0.035]</div> <div>CONTACT RESISTANCE = 6 mΩ TEST VOLTAGE = 1100V WORKING VOLTAGE = 500V</div>	<div>6 POSITION 6 AMP MAX. PIN Ø = 0.70 [0.028]</div> <div>CONTACT RESISTANCE = 7.5 mΩ TEST VOLTAGE = 1000V WORKING VOLTAGE = 450V</div>	<div>7 POSITION 6 AMP MAX. PIN Ø = 0.70 [0.028]</div> <div>CONTACT RESISTANCE = 7.5 mΩ TEST VOLTAGE = 1000V WORKING VOLTAGE = 450V</div>	<div>8 POSITION 5 AMP MAX. PIN Ø = 0.70 [0.028]</div> <div>CONTACT RESISTANCE = 7.5 mΩ TEST VOLTAGE = 875V WORKING VOLTAGE = 400V</div>	<div>9 POSITION 3 AMP MAX. PIN Ø = 0.50 [0.020]</div> <div>CONTACT RESISTANCE = 10 mΩ TEST VOLTAGE = 600V WORKING VOLTAGE = 333V</div>	<div>10 POSITION 3 AMP MAX. PIN Ø = 0.50 [0.020]</div> <div>CONTACT RESISTANCE = 10 mΩ TEST VOLTAGE = 600V WORKING VOLTAGE = 333V</div>
---	---	--	--	--	--	---	--	---

RoHS COMPLIANT

BOARD LAYOUTS

● = KEY LOCATION



RoHS COMPLIANT



THESE DRAWINGS AND SPECIFICATIONS ARE THE PROPERTY OF NorComp AND SHALL NOT BE REPRODUCED, COPIED OR USED AS THE BASIS FOR THE MANUFACTURE OR SALE OF APPARATUS WITHOUT WRITTEN PERMISSION.

NorComp

DRAWN:
M. SIGMON

DATE:
10-04-16

SCALE:
N.T.S.

SHEET
2 OF 2

REV:
1

CHECKED:

DATE:

DWG NO.
8P1PYYY210GRF01