

DESCRIPTION

ArcLine is a premium grade specification lensed troffer series. This innovative, high quality luminaire is dedicated to the latest lamp and micro electronic ballast technology for optimal performance and energy efficiency. The ArcLine is compatible with all of today's popular ceiling systems and is available with a number of options and accessories for application versatility.

The ArcLine series features efficiency, quality and performance. The series is an excellent choice for commercial office spaces, schools, hospitals or retail merchandising areas.

SPECIFICATION FEATURES

Construction

Rigid housing is die formed of code gauge prime cold rolled steel and features full length dieformed stiffeners and unibody endplate for added strength. Side flanges are hemmed. Innovative design provides superior lens brightness uniformity and visual comfort. Micro ballast cover*** reduces ballast shadow for superior lens brightness uniformity and is easily removed without tools. Die formed captive lampholder brackets fully enclose lampholder wiring permitting easy lampholder replacement. Unibody endplates are securely attached with interlocking tabs and screws. Four auxiliary fixture end suspension points provided. Ample KOs are provided for continuous row wiring. Endplates have integral Grid-lock feature for safety and convenience.

Electrical

Ballasts are CBM/ETL Class "P" and are positively secured by mounting bolts. Rotor-lock lampholders ensure positive lamp retention. UL/CUL listed. Suitable for damp locations.

Finish

Multistage, iron phosphate pretreatment ensures maximum bonding and rust inhibition. Housing and ballast cover finished with new 90% reflective white enamel for superior performance.

Hinging/Latching

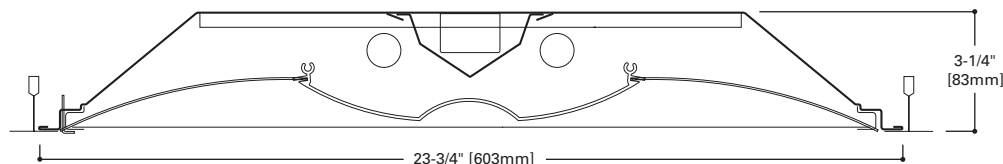
Positive cam action steel latches with baked white enamel finish. Safety-lock T-hinges allow hinging and latching either side. Door assembly hinges down for easy access from below without tools.

Frame/Shielding

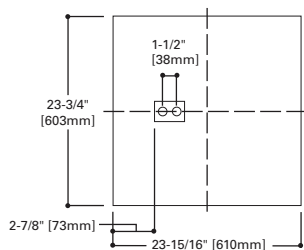
Die formed, heavy gauge, flat steel door with reinforced mitered corners and paint after fabrication, baked matte white enamel finish. Positive light seals. Light stabilized, acrylic frosted lens.

Controls

Fifth Light ballast options are offered for both 0-10V continuous dimming and DALI applications. Combine with energysaving products like occupancy sensors, daylighting controls, and lighting relay panels from Cooper Controls (www.coopercontrol.com) to maximize energy savings.

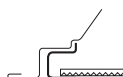


MOUNTING DATA

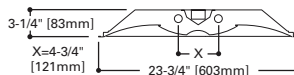


DOOR FRAMES

ALN
Flat, White Steel

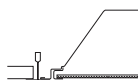


LAMP CONFIGURATIONS



CEILING COMPATIBILITY

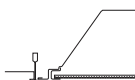
G
Grid/Lay-in
Standard



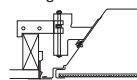
G
Concealed T



G
Slot Grid



F
Flange Trim
With Supporting
Swing Gates



**Ceiling
Type**

Exposed Grid
Concealed T
Slot Grid
Flange

(Verify compatibility/ consult factory.)

**Trim
Type**

G
G
G
F

ENERGY DATA

Input Watts:
EB Ballast & STD Lamps
217 (31)

*Reference the lamp/ballast data in the Technical Section for specific lamp/ballast requirements.

**Consult Pre Sales Technical Support.

***Low profile emergency unit option only.

****When ordering Flange Kit for installation in drywall ceilings, see options and accessories compatibility section and ordering logic.

LAMPS CONTAIN MERCURY. DISPOSE ACCORDING TO LOCAL, STATE OR FEDERAL LAWS

LINEAR DISCONNECT

Safe and convenient means of disconnecting power.



**2ALN
217**

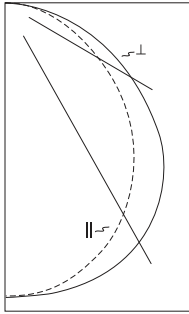
**2' X 2' TROFFER
2 T8 LAMPS**

Specification Architectural
Troffer

For Use In Insulated
Ceilings



PHOTOMETRICS

**2ALNG-217-UNV-EB81-U**

Electronic Ballast

(2) F17T8 Lamps

1350 Lumens

Spacing criterion:

(II) 1.2 x mounting

height, (⊥) 1.4 x

mounting height

Efficiency 77.5%

Test Report:

2ALNG-217-UNV-

EB81-U.IES

LER = FL58

Yearly Cost of 1000

lumens, 3000 hrs at

.08 KWH = \$4.14

Candlepower

Angle	Along II	45°	Across ⊥
0	731	731	731
5	727	730	732
10	716	723	729
15	697	710	722
20	669	691	711
25	636	669	696
30	595	640	674
35	548	604	643
40	495	559	599
45	439	508	546
50	380	449	485
55	316	383	417
60	259	317	348
65	198	252	276
70	144	190	211
75	96	135	147
80	54	83	85
85	22	35	38
90	0	0	0

Coefficients of Utilization

Effective floor cavity reflectance																		20%														
rc	80%						70%						50%						30%						10%						0%	
rw	70	50	30	10	70	50	30	10	50	30	10	50	30	10	50	30	10	50	30	10	50	30	10	0								
RCR																																
0	92	92	92	92	90	90	90	90	86	86	86	82	82	82	79	79	79	77														
1	84	81	77	74	82	79	76	73	76	73	71	73	71	69	70	68	67	65														
2	77	70	65	61	75	69	64	60	66	62	59	64	60	57	61	58	56	54														
3	70	62	56	51	68	61	55	50	58	53	49	56	52	48	54	51	47	46														
4	64	55	48	43	62	54	47	43	52	46	42	50	45	41	48	44	41	39														
5	59	49	42	37	57	48	42	37	46	41	36	45	40	36	44	39	35	34														
6	54	44	37	32	53	43	37	32	42	36	32	41	35	31	39	35	31	30														
7	50	40	33	28	49	39	33	28	38	32	28	37	32	28	36	31	28	26														
8	47	36	30	25	46	36	30	25	35	29	25	34	29	25	33	28	25	23														
9	44	33	27	23	43	33	27	23	32	27	23	31	26	22	30	26	22	21														
10	41	31	25	21	40	30	25	21	30	24	21	29	24	20	28	24	20	19														

Zonal Lumen Summary

Zone	Lumens	%Lamp	%Fixture
0-30	578	21.4	27.6
0-40	952	35.3	45.5
0-60	1674	62.0	80.0
0-90	2092	77.5	100.0
0-180	2092	77.5	-100.0

Luminance Data

Angle in Deg	Average 0-Deg cd/sm	Average 45-Deg cd/sm	Average 90-Deg cd/sm
45	2130	2465	2650
55	1890	2291	2495
65	1608	2046	2241
75	1273	1790	1949
85	866	1378	1496

ORDERING INFORMATION

SAMPLE NUMBER: 2ALNG-217-UNV-EB81-U

Rating Blank = Standard ATW-SW4 = Chicago Rated	Number of Lamps 2 =2 Lamps (Not included)	Voltage ⁽²⁾ 347V =347 Volt UNV =Universal Voltage 120-277 ⁽³⁾	Ballast Type ⁽²⁾ EB8_ =T8 Electronic Start. Total Harmonic Distortion < 10% EB8_/PLUS = T8 Electronic Start. Total Harmonic Distortion < 10%. High Ballast Factor > 1.15. ER8_ =T8 Electronic Program Rapid Start. Total Harmonic Distortion < 10% High Performance T8 Ballasts HB8_ =T8 Electronic Instant Start. Total Harmonic Distortion < 10%. Standard Ballast Factor .86 – .88 HB8_L =T8 Electronic Instant Start. Total Harmonic Distortion < 10%. Low Ballast Factor .77 – .82 HB8_N =T8 Electronic Instant Start. Total Harmonic Distortion < 10%. Normal Ballast Factor 1.0 HB8_H =T8 Electronic Instant Start. Total Harmonic Distortion < 10%. Normal Ballast Factor 1.15 – 1.20 HR8_ =T8 Electronic Program Rapid Start. Total Harmonic Distortion < 10%. Standard Ballast Factor .86 – .88 HR8_DIM =T8 Electronic Program Rapid Start. Total Harmonic Distortion < 10%. Step Dimming. Ballast Factor .88 HR8_L =T8 Electronic Program Rapid Start. Total Harmonic Distortion < 10%. Low Ballast Factor .71 – .79 HR8_H =T8 Electronic Program Rapid Start. Total Harmonic Distortion < 10%. High Ballast Factor 1.15 – 1.20 0-10V Dimming Ballasts ⁽⁷⁾ 5LTV8_ =T8 0-10V Program Rapid Start. Total Harmonic Distortion < 10%. Ballast Factor 0.87 5LTVS8_ =T8 0-10V Spec Grade Program Rapid Start. Total Harmonic Distortion < 10%. Ballast Factor 0.87 ⁽⁸⁾ Fifth Light DALI Ballasts ⁽⁶⁾ 5LT8_ =T8 DALI Program Rapid Start. Total Harmonic Distortion < 10%. Ballast Factor 1.0	Options GL =Single Element Fuse GM =Double Element Fuse Lamps =Lamps Installed (see options and accessories) Flex =Flex Installed (Reference Flex ordering information) EL =Emergency Installed ⁽⁵⁾	Options G1 =Gasket, Door Frame and Housing G2 =G1 plus Gasket between Lens and Door G3 =G1 and G2 plus Gasketing on Mounting Surface of Fixture Trims
Width 2 =2' Width	Wattage (Length) 17 =17W T8 (24")	Shielding Blank =Smooth Frosted Acrylic (standard)	Packaging U =Unit Pack PALC =Job Pack, in carton		
Series ALN =ArcLine Series	Option – Aluminum Flange Trim ⁽⁴⁾ Blank =SW (Single White) Type Color 'S' Single 'N' Natural 'R' In Row 'W' White 'E' End of Row	Trim Type G =Grid/Lay-in (Standard) ⁽¹⁾ G =Concealed T G =Slot Grid F =Flange Trim			
Door Frame Standard =Flat White Steel Door (Leave Blank)					
Number of Ballasts 1 =1 Ballast					

NOTES: ⁽¹⁾ An EQ Grid Clip is recommended for all 9/16" ceiling systems. ⁽²⁾ Products also available in non-US voltages and frequencies for international markets. ⁽³⁾ Not available when specifying emergencies, voltage must be specific. ⁽⁴⁾ Specify row configuration, type in catalog number when ordering complete fixture. ⁽⁵⁾ Low profile emergency unit only, no access plate wire through end plate. Please specify voltage. ⁽⁶⁾ For a complete listing of Fifthlight Technology products and other solutions from Cooper Controls, visit www.coopercontrol.com. ⁽⁷⁾ 0-10V ballast do not include DALI feature. Please select DALI ballast for use with Fifth Light system. ⁽⁸⁾ Specification grade 0-10V dimming ballast are NEMA premium and CEE listed. They are compatible with low mercury and energy saving lamps.

Specifications & dimensions subject to change without notice. Consult your Cooper Lighting Representative for availability and ordering information.

ACCESSORIES

EQ-CLIP-U=T-BAR Safety Earthquake Clips⁽¹⁾
FCTKA-22W-U=Field Installed Flange Kit

FCTK Trim Kit Field Convertible	A - 24 22 =2' x 2' 24 =2' x 4'	R W - U N =Natural W =White Blank =Single R =In Row E =End Row
-------------------------------------------------	-----------------------------------------------------------	-------------------------------------------------------------------------------------------------------------------------

SHIPPING DATA

Catalog No.	Wt.
2ALNG-217	10 lbs.