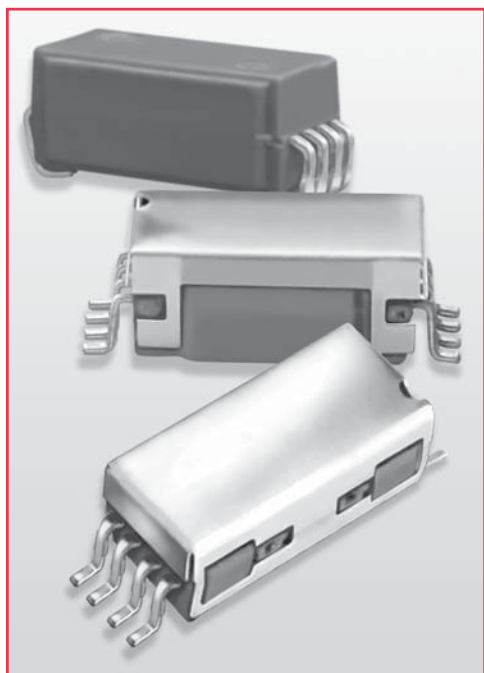


9800 Series/Surface Mount Reed Relays



SURFACE MOUNT REED RELAYS

Ideally suited to the needs of Automated Test Equipment, Instrumentation and Telecommunications requirements, Coto's 9800 Series is an ultra-miniature Surface Mount Reed Relay that combines small size with exceptional RF performance. The 9814 extends life at ATE loads 3X or more utilizing Coto's proprietary switch technology. The external Magnetic Shield reduces interaction between parts in high density boards. The 9852 adds a form C capability. Small size plus added features allow for high density packing, and make these relays ideal for designs such as high speed, high pin count VLSI testers where speed, size and performance are all needed.

SERIES FEATURES

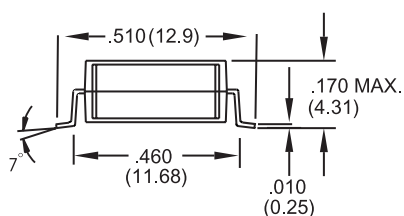
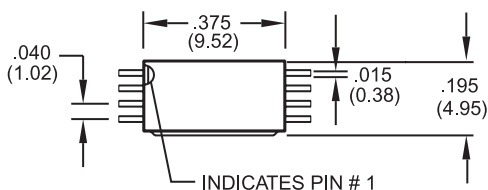
- ◆ Available in Axial, Gull wing and "J" lead configurations
- ◆ Tape and Reel packaging available
- ◆ High reliability, hermetically sealed contacts for long life
- ◆ High Insulation Resistance - $10^{12} \Omega$ minimum (Form A)
- ◆ Coaxial shield for 50 Ω impedance
- ◆ 6.5 GHz bandwidth for RF and Pulse switching (fast rise time pulses)
- ◆ External Magnetic Shield

Model 9802

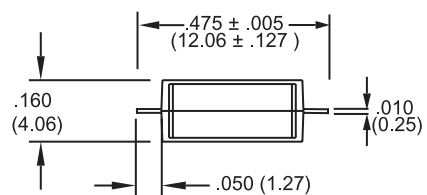
Dimensions in Inches (Millimeters)

Models 9814 & 9852

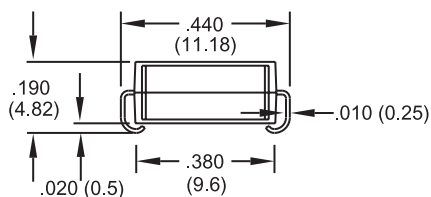
Gull Wing²



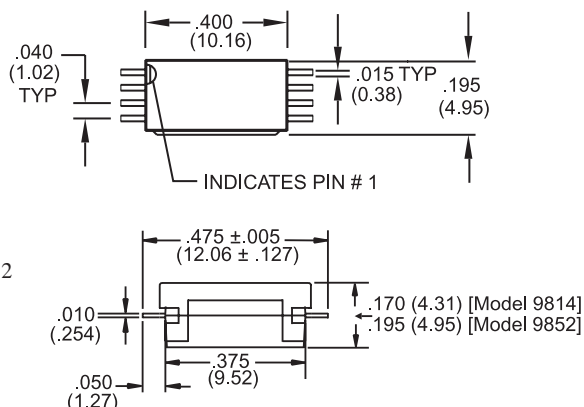
Axial²



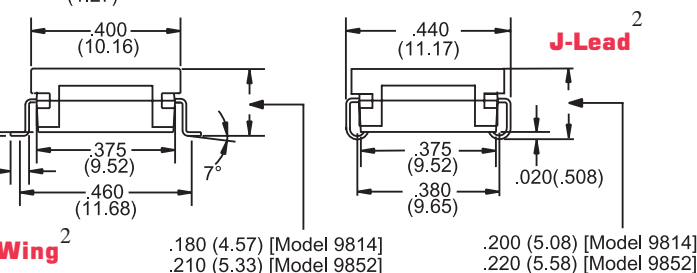
J-Lead²



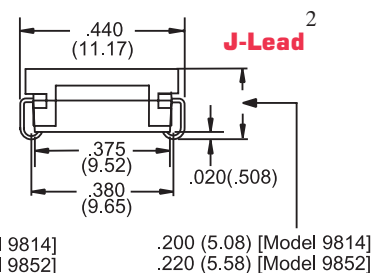
Axial²



Gull Wing²



J-Lead²



Ordering Information

Part Number	9XXX-XX-XX
Model Number	9802 9814 9852
Coil Voltage	03=3.3 volts (9814) 05=5 volts
Lead Style	00=Gull Wing 10=Axial 20=J-Lead

9800 Series/Surface Mount Reed Relays

Model Number			9802	9814		9852 ⁴
			1 Form A 50 Ω Coaxial	1 Form A 50 Ω Coaxial	1 Form C 50 Ω Coaxial	1 Form C 50 Ω Coaxial
Parameters	Test Conditions	Units				
COIL SPECIFICATIONS						
Nom. Coil Voltage		VDC	5	3.3	5	5
Max. Coil Voltage		VDC	6	4	6	6
Coil Resistance	+/- 10%, 25° C	Ω	150	70	150	110
Operate Voltage	Must Operate by	VDC - Max.	3.8	2.5	3.8	3.8
Release Voltage	Must Release by	VDC - Min.	0.4	0.4	0.4	0.4
CONTACT RATINGS						
Switching Voltage	Max DC/Peak AC Resist.	Volts	100	100		30
Switching Current	Max DC/Peak AC Resist.	Amps	0.25	0.25		0.1
Carry Current	Max DC/Peak AC Resist.	Amps	0.5	0.5		0.2
Contact Rating	Max DC/Peak AC Resist.	Watts	3	3		3
Life Expectancy-Typical ¹	Signal Level 1.0V,10mA	x 10 ⁶ Ops.	250	1000		100N/C
Static Contact Resistance (max. init.)	50mV, 10mA	Ω	0.125	0.125		0.150
Dynamic Contact Resistance (max. init.)	0.5V, 50mA at 100 Hz, 1.5 msec	Ω	0.150	0.150		0.150
RELAY SPECIFICATIONS						
Insulation Resistance (minimum)	Between all Isolated Pins at 100V, 25°C, 40% RH	Ω	x 10 ¹²	10 ¹²		10 ⁹
Capacitance - Typical	No Shield	pF	-	-		-
Across Open Contacts	Shield Floating	pF	-	-		-
	Shield Guarding	pF	0.2	0.2		1.0
Open Contact to Coil	No Shield	pF	-	-		-
	Shield Floating	pF	-	-		-
	Shield Guarding	pF	0.5	0.5		1.0
Closed Contact to Coil	Shield Guarding	pF	0.5	0.5		0.5
Contact to Shield	Contacts Open,	pF	-	-		-
	Shield Floating					
Dielectric Strength (minimum)	Between Contacts	VDC/peak AC	200	200		200
	Contacts to Shield	VDC/peak AC	1500	1500		1000
	Contacts/Shield to Coil	VDC/peak AC	1500	1500		1000
Operate Time - including bounce - Typical / Max	At Nominal Coil Voltage, 30 Hz Square Wave	msec.	0.25	0.25		1.0
Release Time - Typical / Min	Zener-Diode Suppression ³	msec.	0.05	0.05		1.0

Top View: Dot stamped on top of relay refers to pin #1 location

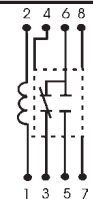
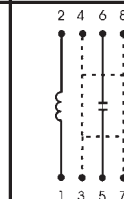
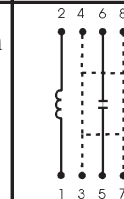
Notes:

¹ Consult factory for life expectancy at other switching loads. Contact resistance 2.0Ω defines end of life.

² Surface mount component processing temperature: 500°F / 260°C max for 1 minute dwell time. Temperature measured on leads where lead exits molded package.

³ Consists of 56V Zener diode and 1N4148 diode in series, connected in parallel with coil.

⁴ Custom Coil Designs are available. Contact Coto.



Environmental Ratings

Storage Temp: -35°C to +100°C; Operating Temp: -20°C to +85°C
The operate and release voltage and the coil resistance are specified at 25°C. These values vary by approximately 0.4% / °C as the ambient temperature varies.
Vibration: 20 G's to 2000 Hz; Shock: 50 G's

Mouser Electronics

Authorized Distributor

Click to View Pricing, Inventory, Delivery & Lifecycle Information:

[Coto Technology:](#)

[9814-03-00](#) [9852-05-00](#) [9802-05-00](#) [9802-05-20](#) [9814-05-20](#) [9814-03-20](#)