



## FEATURES

- RoHS compliant
- Low profile
- Surface mount
- Inductance range from 1.0μH to 1.0mH
- Tape & reel
- UL 94V-0 materials
- J-STD-020D.1 reflow

## PRODUCT OVERVIEW

The 2900 series is a range of bobbin-wound, shielded inductors. They are suitable for power-line filtering found in consumer electronics such as desktop computers, handheld devices and GPS systems, as well as in a vast range of industrial and telecom applications including network hubs, bridges & routers, and high frequency wireless communication devices.

These surface mount inductors are extremely compact and have an integral shield, making them useful in EMI sensitive applications.

For lower current ratings see also our lower profile 2900L series.

# 2900 Series

## Shielded Surface Mount Inductors

## SELECTION GUIDE

Order Code	Inductance (10kHz, 0.1VAc)		Idc <sup>2</sup>	Rdc
	Nom. μH	Min. – Max. μH	Max. A	Max. mΩ
<b>29102C</b>	1.0	0.70 – 1.30	6.0	16
<b>29152C</b>	1.5	1.05 – 1.95	5.5	18
<b>29222C</b>	2.2	1.54 – 2.86	5.0	20
<b>29332C</b>	3.3	2.31 – 4.29	4.0	28
<b>29472C</b>	4.7	3.29 – 6.11	2.3	30
<b>29682C</b>	6.8	4.76 – 8.84	2.1	40
<b>29103C</b>	10	8.0 – 12.0	1.8	45
<b>29153C</b>	15	12.0 – 18.0	1.5	65
<b>29223C</b>	22	17.6 – 26.4	1.2	85
<b>29333C</b>	33	26.4 – 39.6	1.0	120
<b>29473C</b>	47	37.6 – 56.4	850mA	170
<b>29683C</b>	68	54.4 – 81.6	650mA	250
<b>29104C</b>	100	80.0 – 120	530mA	360
<b>29154C</b>	150	120 – 180	470mA	500
<b>29224C</b>	220	176 – 264	380mA	760
<b>29334C</b>	330	264 – 396	320mA	1000
<b>29474C</b>	470	376 – 564	260mA	1600
<b>29684C</b>	680	544 – 816	210mA	2400
<b>29105C</b>	1000	800 – 1200	180mA	4100

## ABSOLUTE MAXIMUM RATINGS

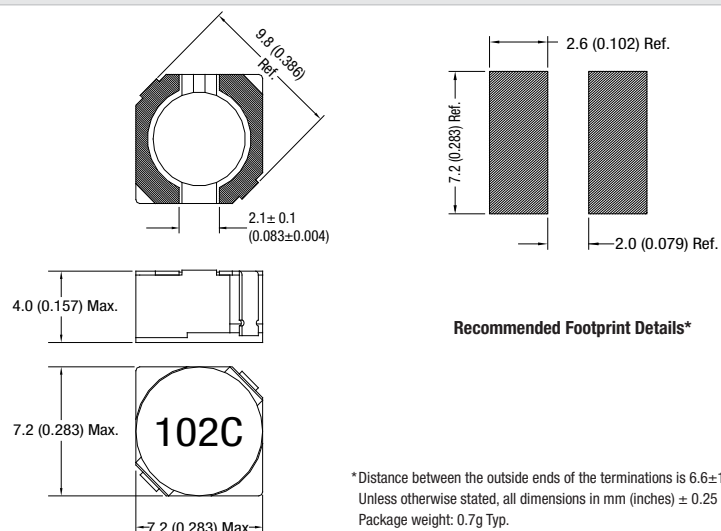
Operating free air temperature range	-40°C to 85°C
Storage temperature range	-40°C to 125°C

## SOLDERING INFORMATION<sup>1</sup>

Peak reflow solder temperature	250°C
Pin finish	Tin
Moisture sensitivity level <sup>3</sup>	1

## PACKAGE SPECIFICATIONS

### Mechanical Dimensions



\* Distance between the outside ends of the terminations is 6.6 ± 1.5 (0.26 ± 0.06)  
Unless otherwise stated, all dimensions in mm (inches) ± 0.25 (0.010).  
Package weight: 0.7g Typ.

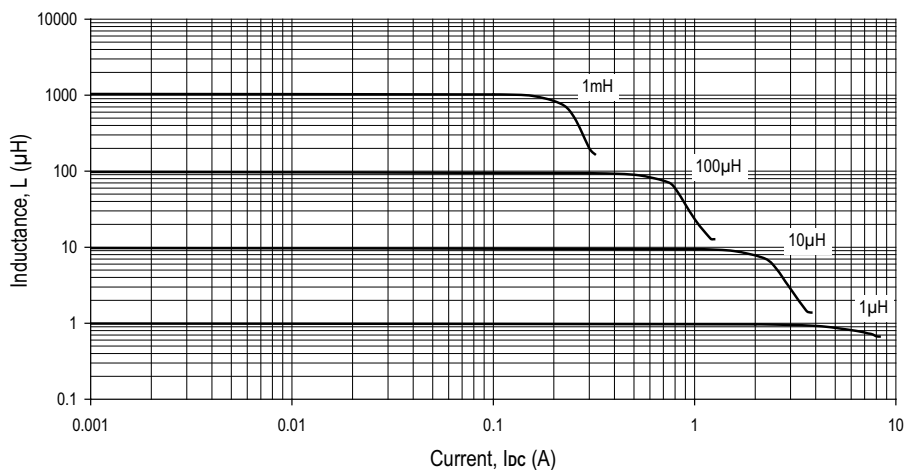
1 For further information, please visit [www.murata-ps.com/rohs](http://www.murata-ps.com/rohs)  
2 The maximum DC current is the value at which the inductance falls to 75% of its nominal value or when its temperature rise reaches 40°C, whichever is sooner.

3 When tested to moisture sensitivity level 1, as described per IPC/JEDEC J-STD-020D, products passed electrical testing, package coplanarity and visual inspection.  
All specifications typical at T<sub>A</sub>=25°C

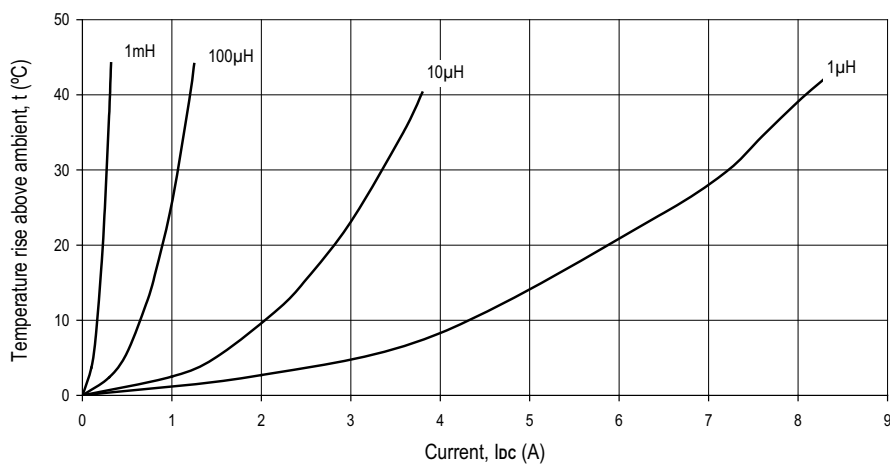


For full details go to  
[www.murata-ps.com/rohs](http://www.murata-ps.com/rohs)

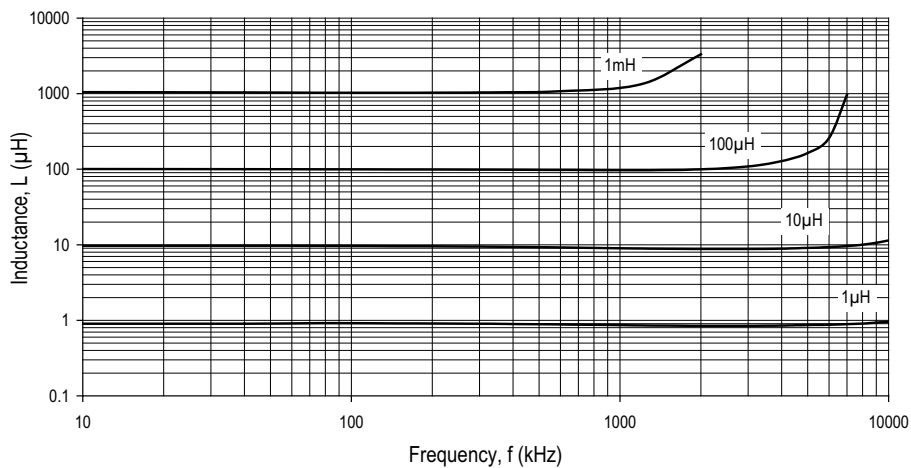
**INDUCTANCE Vs CURRENT**



**TEMPERATURE Vs CURRENT**

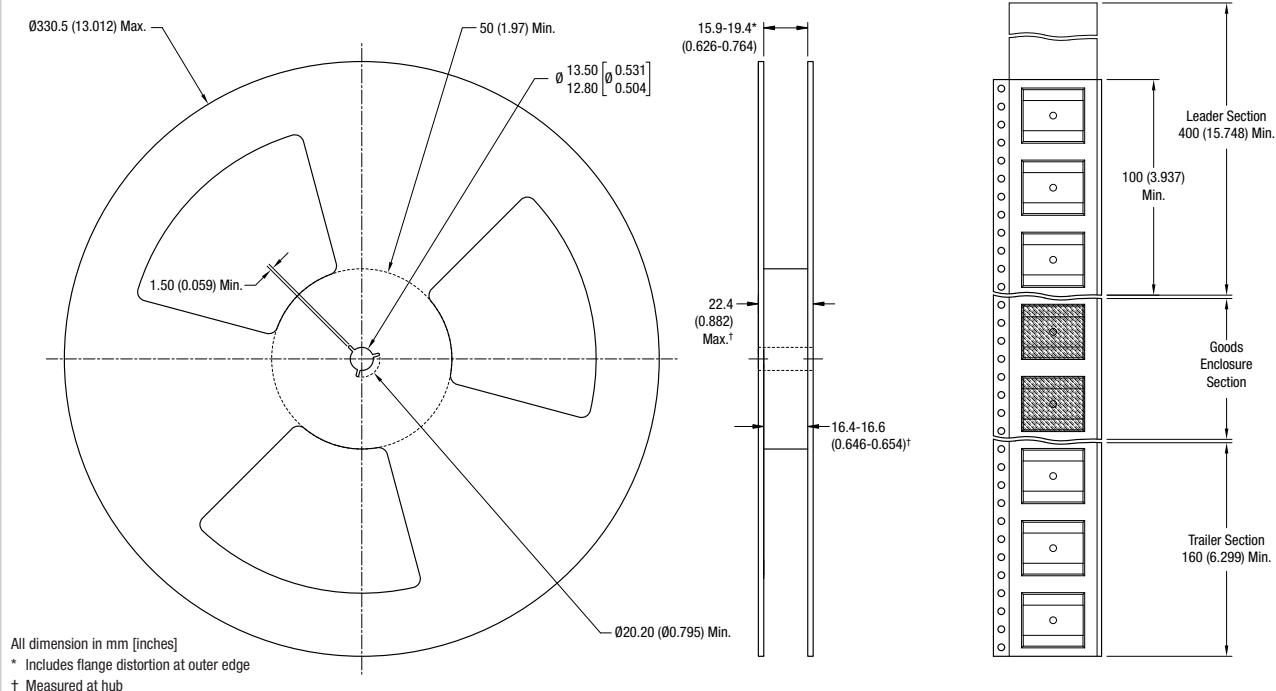


**INDUCTANCE Vs FREQUENCY**

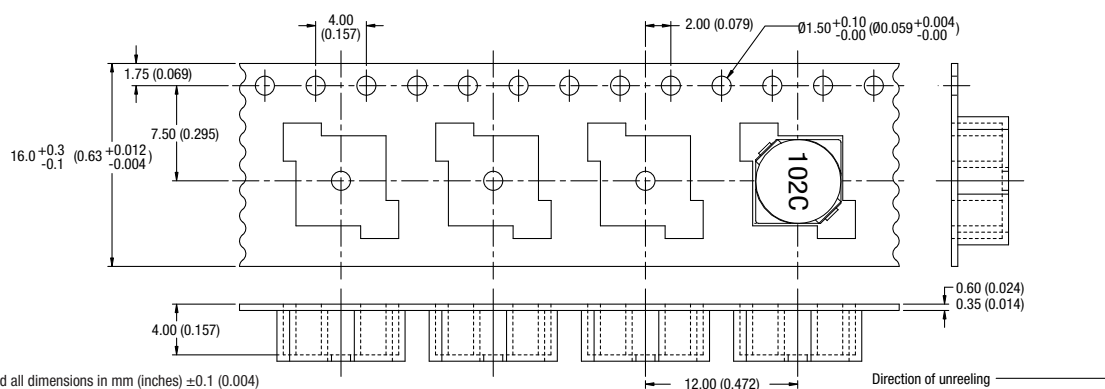


## PACKAGE SPECIFICATIONS

### Reel Dimensions



### Tape Outline Dimensions



**Murata Power Solutions, Inc.**  
11 Cabot Boulevard, Mansfield, MA 02048-1151 U.S.A.  
ISO 9001 and 14001 REGISTERED

Murata Power Solutions, Inc. makes no representation that the use of its products in the circuits described herein, or the use of other technical information contained herein, will not infringe upon existing or future patent rights. The descriptions contained herein do not imply the granting of licenses to make, use, or sell equipment constructed in accordance therewith. Specifications are subject to change without notice.